

AUTOMATIONDIRECT.com



## Pilot Devices

**Pfannenberg**  
ELECTRO-TECHNOLOGY FOR INDUSTRY

**PATLITE**  
**Fuji Electric**

**SCHMERSAL**

**WERMA**  
SIGNALTECHNIK

**CAPTRON**

**STAHL**

**IDEM**  
**SAFETY SWITCHES**

Up-to-date price list:  
[www.automationdirect.com/pricelist](http://www.automationdirect.com/pricelist)

FREE Technical Support:  
[www.automationdirect.com/support](http://www.automationdirect.com/support)

FREE Videos:  
[www.automationdirect.com/videos](http://www.automationdirect.com/videos)

FREE Documentation:  
[www.automationdirect.com/documentation](http://www.automationdirect.com/documentation)

FREE CAD drawings:  
[www.automationdirect.com/cad](http://www.automationdirect.com/cad)



[www.automationdirect.com/pushbuttons-lights](http://www.automationdirect.com/pushbuttons-lights)

Pilot Devices **mPIL-1**



# Quality pilot devices at incredible prices . . .

## What are Control and Signaling Devices?

Control and signaling devices (also known as pilot devices) refer to components such as pushbuttons, indicator lights, selector switches, and visual and/or audible signaling devices. These are commonly used for automated processes and systems to control and monitor conditions for all types of equipment, processes, and machinery.

Pilot devices also provide crucial control and indication to provide a safe work area and to protect equipment. From emergency pushbuttons used to completely disable a machine, system, or process in an emergency to indicators that provide local or remote indication of hazards, warnings, or unsafe conditions, these devices play an essential role in industrial automation.

## Fuji Electric

### 16mm, 22mm, and 30mm Command Series pilot devices

Fuji Electric pilot devices feature a compact design that occupies less space than traditional devices and offers better layout and wiring, easier installation, and increased safety. We offer a full line of Fuji Electric 16mm, 22mm, and 30mm pilot devices, including:

- Illuminated and non-illuminated flush and extended pushbuttons
- Mushroom pushbuttons
- Emergency stop pushbuttons
- Selector switches
- Pilot lights
- Joystick selector switches
- Buzzers
- Accessories

Starting at  
**\$10.00**  
(AR22FOR-10WZA)



Starting at  
**\$2.50**  
(GCX3112-SQ)



### AutomationDirect GCX series 22mm metal and plastic pilot devices

We have teamed up with European partners to offer even more quality options in 22mm metal and plastic operator switches and pushbuttons. The GCX series is a complete line of economical 22mm pilot devices including:

- Illuminated or non-illuminated momentary pushbuttons
- Emergency stop buttons
- Rotary switch products
- LED indicator lights

### Cutler-Hammer 30mm NEMA HT800 series

We took advantage of the experience of Cutler-Hammer engineering to take existing product technology and make it better. We proudly offer you the HT8 series of 30mm pilot devices from Cutler-Hammer. (Cutler-Hammer parts are available for sale in North America only.)

- Flush, extended, illuminated or non-illuminated, mushroom and guarded pushbuttons
- Pilot lights and push-to-test models
- Selector switches in knob or lever versions
- NEMA 1, 2, 3, 3R, 4, 4X, 12 and 13 rated

Starting at  
**\$14.50**  
(E22PPB1)



### Cutler-Hammer E22 series 22mm non-metallic pushbuttons, switches, and indicators

Eaton Cutler-Hammer E22 series 22mm pushbuttons offer an array of functional, smartly-styled pilot devices including:

- Illuminated and non-illuminated flush and extended pushbuttons
- Mushroom pushbuttons
- Emergency stop pushbuttons
- Selector switches and key switches in a variety of styles
- LED and incandescent indicator lights
- Accessories

Starting at  
**\$27.50**  
(HT8ABG)



## SCHMERSAL 22mm IP69K Control and Signaling Devices

Schmersal N series 22mm IP69K devices are specifically designed for food processing, pharmaceutical, and medical applications where special cleaning requirements and cross-contamination prevention are required.

- Illuminated & non-illuminated extended, round momentary pushbuttons
- Momentary mushroom pushbuttons
- Push-to-lock, pull-to reset emergency stop pushbuttons
- LED Indicator lights
- Non-illuminated 2- and 3-position selector switches
- Plastic bases with plastic bezels
- IP67/69K protection rating

Starting at  
**\$17.00**  
(ND1SW)



Starting at  
**\$21.00**  
(EDTVBL)



## SCHMERSAL 30mm IP65 Control and Signaling Devices

Schmersal E series 30mm IP65 devices provide simple operator controls and indication for industrial and commercial applications such as machine tools, industrial machinery, control panels, distribution panels, instrumentation panels, and more..

- Illuminated & non-illuminated flush, round momentary pushbuttons
- Momentary mushroom pushbuttons with 40mm or 50mm operators
- Push-lock pull-reset and twist-to-release emergency stop pushbuttons
- Non-illuminated 2- and 3-position selector switches
- 2- and 3-position key switches with key removable in various positions
- Round and dome LED indicating lights
- Plastic bases with metal bezels

## SCHMERSAL Non-Illuminated 22mm IP69K Joystick Selector Switches

Schmersal joystick selector switches are designed for food processing, pharmaceutical, and medical applications and comply with the food and beverage requirements to prevent cross-contamination in machines. The IP69K rating also makes them suitable for marine applications, traffic systems, commercial vehicles, and for dusty and dirty environments.

- Available in blue or gray
- 2- and 4-position momentary action with spring return to center
- Models available with 2 or 4 N.O. contacts
- Plastic bases with plastic bezels
- IP65/67/69/69K protection rating

Starting at  
**\$102.00**  
(NK-T-21-1ST8-2)



Starting at  
**\$9.25**  
(EF03.1)

## SCHMERSAL Contact Blocks and Light Terminal Blocks

Contact and light terminal blocks are designed for low voltage applications and include a self-cleaning bridge system known as Elan four-way system.

- Quality construction provides high shock and vibration resistance
- Contact blocks available in various NO/NC configurations
- Light terminal blocks available in various colors & voltages

## CAPTRON Capacitive Pushbutton Switches

Captron capacitive switches offer the latest technology for pushbuttons and switches. These capacitive pushbuttons are activated by the inherent capacitance of the human body. The capacitance increases when

a person touches the button, causing it to switch. The pushbuttons have a fixed sensing distance which may vary with approach speed or damping factor (size of the body part touching the switch).

### Features:

- Touch control - easy to use, no pressure required, no moving parts
- Durable service life - over 100 million switching cycles
- IP69K-rated - 100% water-proof and oil-proof, perfect for areas requiring sanitary conditions such as food and beverage, medical applications and pharmaceutical
- Shock-resistant and vandal-proof - resists lighter flames and severe blows
- Various switch types - static, dynamic or toggle
- IO-Link v1.1 on select models



Starting at  
**\$63.00**  
(CHT1-159P-29)

### CHT Series

Captron CHT series capacitive switches in 22mm, 50mm, and 60mm barrel sizes provide a variety of switching options with touch surfaces up to 2.48" in diameter.

### Caneo Series10

Captron Caneo Series10 standard, stainless steel, and hygienic EHEDG-certified capacitive switches are IO-Link v1.1 compatible and suitable for a wide range of applications.



Starting at  
**\$59.00**  
(CS10KMLDT-C10-00A6)



Standard capacitive switches with four lateral spotlights provide 360° visibility to help keep operators informed



Robust stainless steel capacitive switches, fully molded in special resin, cannot be destroyed by strong blows



Hygienic EHEDG-certified capacitive switches meet FDA requirements, making them ideal for industries such as food and beverage or medicine and pharmaceutical sectors

Starting at  
**\$148.00**  
(CS41KCRBK-P10-01E7)



### Caneo Series41

Captron Caneo Series41 standard switches are IO-Link v1.1 compatible, come with a large 2.36" diameter touch surface and a 7-segment display, and are ideal for applications requiring an intuitive and clearly visible status display.



**Vandal-Proof... Shock-Resistant... Fire Resistant...**

## AutomationDirect Double/Single Foot Switches

AutomationDirect electric foot switches house a pedal actuator that operates an electrical circuit when the pedal is pressed. Single- or double-pedal foot switches with guards offer a selection of operating configurations. They are available in free movement momentary or maintained, and momentary safety anti-trip actions.



Starting at  
**\$44.50**  
(APS1211-V0)

Die-cast  
aluminum  
guards



Starting at  
**\$36.00**  
(ES-P-230001)

## IDEM Emergency Stop Control Stations

IDEM E-stop control stations are plastic or IP69K stainless steel housings that enclose large mushroom head pushbuttons for emergency protection of machinery and personnel when potentially harmful conditions occur. Models with LED indicator and protection guards are available.

## EATON Start/Stop Combo Control Station

The Eaton start/stop combo control station is a reliable, low-cost solution for the simple operation of discrete control elements. The control station is a preassembled unit with enclosure, 22mm-mounted START and STOP push-buttons, and their operating contacts.



Starting at  
**\$144.00**  
(E22ASB204)

## KILLARK Hazardous Location Control Stations

Killark hazardous location pilot devices include control stations that contain and extinguish explosions, and prevent the igniting of external hazardous atmospheres by the enclosed arcing device. Models in a variety of pushbutton, pilot light, and switch configurations, in sealed or unsealed assemblies, meet Class I and II, Div 1 & 2 requirements.

Assemblies: factory sealed and unsealed models available

- Pushbutton control stations
- Pilot light control stations
- Pushbutton/pilot light combo control stations
- Selector switch control stations
- Mushroom pushbutton control stations
- Device/splice boxes
- Accessories and more



Starting at  
**\$57.00**  
(SWB-2)

## Molex Pendant Switches

Molex pushbutton pendants are ergonomically designed hand-held control switches for direct line-of-sight operation in production, material handling, changeovers, cleaning, and troubleshooting applications. Rubber switch covers make these devices ideal for demanding environments.

- Manually-operated switches with a variety of snap-action contact output arrangements (N.O., N.C.)
- Standard 7/8in - 16 UNC2 connector for quick installation or replacement (cables sold separately)
- Nitrile/PVC rubber or silicone rubber switch cover options
- Nitrile/PVC rubber uniquely suited to withstand chemical exposure in the petrochemical environment
- Silicone rubber/PVC repels and inhibits bacterial growth and is ideal for any indoor or outdoor wet location, such as in food and beverage processing




Starting at  
**\$54.00**  
(S5501)



# Stacklights

Stacklights, called signal towers, are modular, stackable devices that provide illuminated and audible status indication for machines, systems,

or processes. They are available in a variety of colors; in flashing or permanent incandescent, LED, or Xenon lighting; and with audible alarm options.



**Starting at  
\$388.00**  
(65700055)

**WERMA eSIGN Series LED Signal Towers**  
SIGNALTECHNIK

WERMA eSIGN series signal towers provide full-surface signaling with a variety of programmable signal modes. The electronic modularity of these towers provides various colors, brightness levels, and light effects, from the classic signal tower to completely customized settings. The eSIGN signal towers can also switch with ease between variable filling level indications and full-surface signaling.

- Available with 9 or 15 tiers
- Versatile customization options with different modes, light effects, and tones
- Configurable via USB and the free configuration software, or IO-link on compatible models

- 360-degree viewing angle
- Optional wall and tube mounting options
- IO-Link v1.1 on select models

**Applications**

- Access control
- Audible warning
- Building security
- Fault indication

- Filling level indication
- Material availability
- Operating status
- Process monitoring

- Status indication
- Visual warning

## Configuration Options (all models)

### Standard Colors

- Red
- Yellow
- Green
- White
- Blue
- Light yellow
- Violet
- Turquoise

### RGB Color Selection Options



### Light Effects

- Continuous light
- Blinking 1 Hz
- Blinking 2 Hz
- Blinking 3 Hz
- Flashing 1x
- Flashing 2x
- Flashing 3x
- Rotating

### Audible Selections (depending on model)

- 2.7 kHz continuous tone
- 0.9 kHz continuous tone
- 2.8 kHz at 420 Hz pulse frequency
- 0.9 kHz at 20 Hz pulse frequency
- 2.8 kHz at 20 Hz pulse frequency
- 0.9 kHz at 1Hz pulse frequency
- 2.8 kHz at 1Hz pulse frequency
- 2.3 to 3.6 kHz sweep tone
- 2.6 kHz continuous tone
- 1200/800 Hz alternating tone

### Operating Modes

- Autoscale
- Filling Level
- Signal Tower
- Individual

## Operating Modes (all models)

### Autoscale Mode

In autoscale mode, the eSIGN segments are divided equally by the number of active status warnings. If only one status warning is active, the entire signal tower is illuminated in one color for maximum visibility.



### Signal Tower Mode

In signal tower mode, eSIGN segments are combined to create a classic signal tower. Individual tiers are assigned fixed positions that are turned ON when their corresponding status bit is active.



### Filling Level Mode

Filling level mode accurately indicates job progress or material availability as a percentage, gradually illuminating the signal tower from bottom to top or top to bottom.



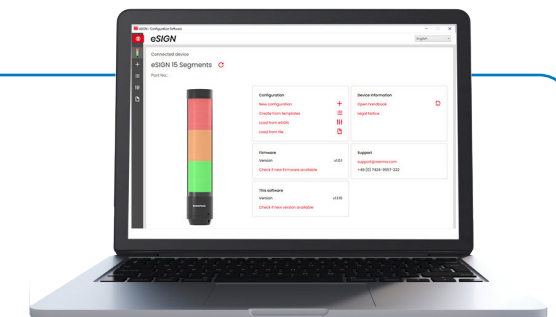
### Individual Mode

All tiers, colors, light effects, and sounds are configured independently for each signal tower state in individual mode. Each signal tower state is selected based on the combination of active status inputs, allowing for a maximum of 64 possible states.



## Software Configurable Models

- Requires WERMA eSIGN configuration software (free download)
- USB-C programming interface
- Operation by hard-wired discrete inputs
- Standalone units do not require a PLC interface
- Software configured models do not support IO-Link



WERMA eSIGN Configuration Software

## IO-Link Models

- An external IO-Link Master is required for operation and configuration
- Operating modes, lighting effects, colors, and sounds can be changed on the fly
- No hard-wired I/O
- Requires extensive knowledge of IO-Link protocol and IO-Link Master and gateway devices





**PATLITE® 25mm ME/MES Series**

Patlite® 25mm ME/MES series high-quality signal towers are designed with direct-mounted, rust-free aluminum bodies.

- Super slim design for easy fit in tight spaces
- 1 to 4 LED tiers
- PNP models IP65, NPN models IP42



Starting at  
**\$93.00**  
(MES-102A-R)



Starting at  
**\$93.00**  
(MPS-102-R)

**PATLITE® 30mm MP/MPS Series**

Patlite® 30mm MP/MPS series signal towers feature a direct-mounted, double-insulated ABS main body design that offers superior impact and heat resistance.

- IP65 rated (IEC 60529)
- 1 to 4 LED tiers
- Optional alarm buzzer available



Starting at  
**\$73.00**  
(LR4-202WJNW-RG)

**PATLITE® 40mm LR4 Series**

Patlite LR4 series tower lights offer a rugged construction for superior impact and heat resistance, and a modular “Twist and Lock” system to easily customize and reconfigure the LED and sound modules.

- 2, 3, and 4 tiers (LED modules)
- Prism-cut lens design for enhanced visibility from any direction
- Optional alarm module with selectable sound patterns
- Direct or pole mount installation
- Interchangeable LED modules require no re-wiring, even after installation

**PATLITE® 70mm LS7 Series**

Patlite® LS7 series 70mm signal towers offer an attractive smooth body design with no screws or metal parts exposed, excellent for harsh environments and areas where high pressure/temperature washdowns are required.

- Available in 3 or 5 LED tiers
- Models with buzzer available
- IP65 rated; models with buzzer are IP54 rated; WC9 models are IP69k rated



Starting at  
**\$162.00**  
(LS7-302DWC-RYGNN)



Starting at  
**\$211.00**  
(HSST-3M2-RYG)

**PATLITE® HSST Series Signal Tower Station**

PATLITE HSST series signal tower stations offer a low-cost solution for controlling the stacklight colors manually via an included 3-button switch box and power adapter.

- Low-cost kit to control signal tower manually
- Three-tier light with red, amber, and green modules
- Includes three-button switch box and power adapter

**PATLITE® LKEH Series - 100mm Combination Large Light Tower and Horn**

Patlite LKEH series 100mm LED signal towers feature a large signal horn and light tower combination, ultra-bright LEDs with a 100mm lens, and an alarm volume up to 105 dB.

- Ultra-bright continuous or flashing LEDs
- 32 alarm tones
- 1 to 4 LED tiers (modules)
- Optional field configuration SD card (sold separately)



Starting at  
**\$445.00**  
(LKEH-102FEUL-R)





## KombiSIGN Pre-assembled Stacklights

Pre-assembled stacklights are available in 2- or 3-light element configurations, made with polycarbonate lens material and LED permanent light elements.

- Available in 24 VAC/VDC or 115 VAC
- IP65 rated
- 70mm diameter

Starting at  
**\$151.00**  
(64924004)



Starting at  
**\$22.50**  
(84610000)



## KombiSIGN Modular 50mm and 70mm Signal Towers

WERMA's modular signal towers offer total flexibility, allowing any combination of up to four (50mm) or five (70mm) audible-visual and audible signal elements. The bayonet mechanism allows elements to be quickly and safely changed without tools (contact-voltage proof).

- Up to 4 (50mm) or 5 (70mm) incandescent, LED, or Xenon light elements
- Light elements available in red, green, amber, white, and blue
- Permanent, blinking, or flashing light functions
- Audible buzzer or siren elements
- IP65 rated components



## FlatSIGN Series LED Signal Columns

WERMA's FlatSIGN LED signal column is a wall-mounted signal unit that provides visual alarm notifications for machines, systems, and/or process alarms.

- Tri-color signal light for wall mount installation
- 160-degree viewing angle
- Audible alert option with 8 selectable tones or continuous tone
- Permanent or blinking (DIP switch selectable) models
- Red/yellow/green LEDs

Starting at  
**\$148.00**  
(69110055)



# Visual Signaling Devices

Visual signaling devices provide alarm and status notifications for industrial and commercial processes, and are available in various colors, diameters, lighting effects, and mounting styles.



## Installation Beacons

WERMA installation beacons are designed for mounting in panels or enclosures in 22.5 or 34mm cutouts.

- Incandescent, LED, or Xenon light sources
- Audible modules with sight/sound combinations
- Permanent, blinking, flashing, and rotating signaling styles
- 360° visibility
- High protection rating IP65
- Five colors
- 29, 57/58, and 75 mm beacon diameters



Starting at  
**\$31.50**  
(20610000)

Starting at  
**\$17.00**  
(20010000)



## Freestanding Beacons

Choose from a variety of mounting and signaling options with freestanding beacons.

- Base, bracket, or tube mounting
- Incandescent, LED, or Xenon light sources
- Permanent, blinking, flashing, LED EVS, and LED rotating signaling styles
- High protection rating IP65
- 57/58/75/98 mm beacon diameters
- Tall lens option available in some styles
- 360° visibility
- Five colors

## PATLITE® NE-A Series Monocolor Signal Beacons

Patlite NE-A series monocolor signal beacons are compact and reliable devices ideal for a variety of signaling applications. Their newly developed reflector evenly distributes light for clear indication. They feature a high protection rating and are suitable for harsh environments.

- Red, amber, green, blue, and white LED color options
- Continuous light function
- IP65, NEMA 4X/13 protection rating
- Base, tube, bracket, pole, and wall mounting options (accessories purchased separately)
- 56mm beacon diameter



Starting at  
**\$32.00**  
(NE-24A-R)



Visual Signaling Devices (cont)



Visual Signaling Devices

PYRA PY XS-05 Series  
Xenon Signal Beacons  
109 x 86 x 80 mm

Pfannenberg PYRA PY XS-05 series signal beacons feature Pfannenberg’s xenon flash technology with high flash energy and long service life. They offer 5 joules of flash energy, 50cd light intensity, and 164m [538ft] max viewing distance.

- Xenon tube flashing strobe
- 1 Hz flash frequency
- 8,000,000 flash service life
- Polycarbonate/ABS blend, impact-proof housing
- 92-127 VAC or 18-30 VDC operating voltages
- Suitable for indoor and outdoor use
- NEMA 4/4X, IK08, IP66 protection rating
- 10-year warranty

PYRA PY X-M-10 Series  
Xenon Signal Beacons  
166 x 114 x 134 mm

Pfannenberg PYRA PY X-M-10 series signal beacons feature Pfannenberg’s xenon flash technology with high flash energy and long service life. They offer 10 joules of flash energy, 149cd light intensity, and 283m [928ft] max viewing distance.

- Xenon tube flashing strobe
- Four DIP switch selectable flash rates
- Full flash synchronization on multi-light systems
- Inrush current limit and undervoltage detection
- Polycarbonate/ABS blend, impact-proof housing
- 90-135 VAC or 10-57 VDC operating voltages
- Suitable for indoor and outdoor use
- NEMA 4/4X, IK08, IP66 protection rating
- 10-year warranty

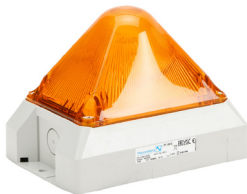
PYRA PY X-L-15 Series  
Xenon Signal Beacons  
212 x 144 x 157 mm

Pfannenberg PYRA PY X-L-15 series signal beacons feature Pfannenberg’s xenon flash technology with high flash energy and long service life. They offer 15 joules of flash energy, 190cd light intensity, and 320m [1050ft] max viewing distance.

- Xenon tube flashing strobe
- Selectable flash frequency (6-60 flashes per minute)
- Full flash synchronization on multi-light systems
- Polycarbonate/ABS blend, impact-proof housing
- Large visual coverage area
- 90-135 VAC or 18-30 VDC operating voltages
- Suitable for indoor and outdoor use
- NEMA 4/4X, IK08, IP66 protection rating
- 10-year warranty



Starting at  
**\$178.00**  
(21510151000)



Starting at  
**\$247.00**  
(21551151000)



Starting at  
**\$299.00**  
(21561151000)

PYRA PY L-M-RGB Series  
LED Signal Beacons  
166 x 114 x 124 mm

Pfannenberg PYRA PY L-M-RGB series LED beacons are visual signaling devices for industrial, commercial, and construction applications. They offer selectable signaling modes, 23cd light intensity, and 111m [364ft] max viewing distance.

- RGB multi-color LED with a wide signaling area
- Permanent, blinking, or flashing signal modes
- Remote color and signal mode selection
- Adjustable brightness
- Polycarbonate/ABS blend housing
- 90-265 VAC or 10-60 VDC operating voltages
- Suitable for indoor and outdoor use
- NEMA 4/4X, IP66 protection rating
- 10-year warranty



Starting at  
**\$308.00**  
(21553648055)

PYRA PY L-S-TL Series  
LED Traffic Lights

Pfannenberg PYRA PY L-S-TL series LED traffic lights signal hazardous conditions for industrial, commercial, and construction applications. They are available in 2- or 3-tier models with selectable signal modes and blink/flash frequencies

- Permanent, blinking, or flashing signal modes
- Polycarbonate/ABS blend housing
- 95-265 VAC or 10-60 VDC operating voltages
- Suitable for indoor and outdoor use
- NEMA 4/4X, IK08, IP66 protection rating
- 10-year warranty



Starting at  
**\$331.00**  
(21514642055)

**PATLITE**® NE-A Series Multi-Color  
Signal Beacons

Patlite NE-A series multi-color signal beacons feature customizable color selection, lighting functions, and audible alarms. These versatile signaling devices provide clear visual communication for various industrial environments. They are energy efficient, offer long-lasting performance, and their durable construction makes them ideal for challenging environments, ensuring consistent signaling in demanding applications.

- Red, amber, green, blue, white, cyan, and purple selectable LED colors
- Permanent and flashing selectable light functions
- Continuous and intermittent audible alarm options on select models
- IP65 or IP67, NEMA 4X/13 or IP67/69K (depending on model)
- 56mm beacon diameter
- NE-M1ATB-M offers capacitive touch acknowledge with open collector NPN output
- Simultaneously use continuous, flashing, and audible alarm conditions
- Base, tube, bracket, pole, and wall mounting options (accessories purchased separately)



Seven selectable LED color options in a single unit

Starting at  
**\$69.00**  
(NE-M1ANN-M)

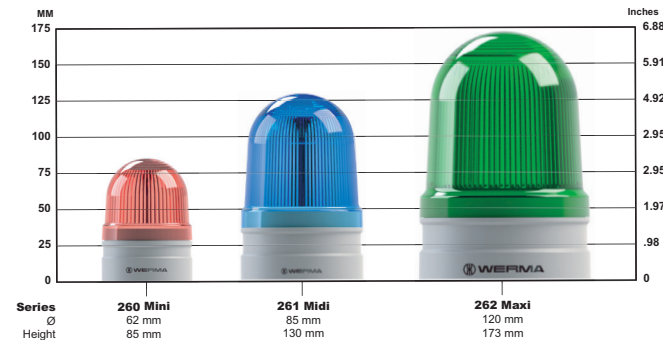


# Audible-Visual Signaling Devices

## WERMA EvoSIGNAL Devices

WERMA's EvoSIGNAL devices are streamlined modular beacon systems that warn, guide, and protect for a wide range of applications. Available with a variety of optical and audible signal types, they make it easy to configure the perfect system for your application and surroundings. They can be safely and easily changed without tools. Select the desired diameter: 62mm, 85mm, or 120mm, and then select the series, lens color, and mounting type that best fits your application.

### EvoSIGNAL Series Types



#### EvoSIGNAL Mini and Midi TwinLIGHT Series

The TwinLIGHT series provides the option of a permanent or blinking light. Available in Mini (62mm) or Midi (85mm).

#### EvoSIGNAL Mini and Midi TwinFLASH Series

The TwinFLASH series provides the option of a double flash or EVS (random flashing) light. Available in Mini (62mm) or Midi (85mm).

#### EvoSIGNAL Midi and Maxi Rotating Series

The Midi and Maxi rotating series provide a 180 rpm rotating light. Available in Midi (85mm) or Maxi (120mm).

#### EvoSIGNAL Mini and Midi Audible Signal Horn Series

The Mini (62mm) audible signal horn series provides the option of continuous or pulse tones at 95 dB at 1m. The Midi (85mm) audible signal horn series provides the option of 10 selectable tones at 110 dB at 1m.

#### EvoSIGNAL Maxi TwinLIGHT 120mm Series

The Maxi TwinLIGHT 120mm series provides the option of a permanent or blinking, or a 180 rpm rotating light.

#### EvoSIGNAL Maxi TwinFLASH Series

The Maxi TwinFLASH series provides the option of a double flash or EVS (random flashing) light.

#### Features (all above):

- 115-230 VAC, 12/24 VAC/VDC voltage ratings
- Push-in connection terminals
- 2 year warranty
- IP66
- Base, tube, bracket and wall mount options
- Requires mounting adapter, sold separately



#### EvoSIGNAL Mini and Midi Tricolor Series

The Tricolor series provides a permanent light that allows the color to be easily changed to red, yellow or green. Available in Mini (62mm) or Midi (85mm).

- Voltage ratings:
  - Mini: 24 VAC/VDC
  - Midi: 115-230 VAC, 12/24 VAC/VDC
- 2 year warranty
- IP66
- Base, tube, bracket and wall mount options
- Requires mounting adapter, sold separately

#### EvoSIGNAL Accessories

The Mini, Midi and Maxi series visual and audible beacons accessories include the required mounting adapter for the specific series/diameter size. The EvoSIGNAL accessories include:

- Base mounting adapters
- M22 / PG 29, Mounting adapters
- Tube mounting adapters
- Bracket mounting adapters with cable gland
- Bracket mounting



## PATLITE® NE-IL Series Multi-Color IO-Link Signal Beacons

Patlite NE-IL series signal beacons are a compact and versatile line designed for industrial automation and process control applications. They offer bright LED lights in selectable colors, a variety of lighting functions and audible alarms, and models with capacitive touch sensors for real-time status confirmation. They feature IO-Link compatibility for integration into industrial control systems that require remote monitoring and control.



Seven selectable LED color options in a single unit

Starting at  
**\$99.00**  
(NE-ILNN-M)

- Red, amber, green, blue, white, cyan, and purple selectable LED colors
- Permanent, flashing, double flash, triple flash, and rotating selectable light functions
- Eight selectable audible alarm tones (88 dB) on select models
- IP65 or IP67, NEMA 4X/13 or IP67/69K (depending on model)
- 56mm beacon diameter
- Select models offer capacitive touch to acknowledge function
- Simultaneously use continuous, flashing, and audible alarm conditions
- Base, tube, bracket, pole, and wall mounting options (accessories purchased separately)
- IO-Link v1.1 compatible

#### IO-Link Functions

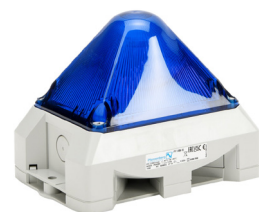
- An external IO-Link master is required for operation and configuration
- Remotely change the color of the signal beacon to indicate different machine states
- Monitor the operating temperature of the signal beacon to prevent overheating
- Receive a notification if the signal beacon fails
- Configure the flash pattern of the signal beacon to match the specific needs of the application
- Adjust the brightness of the signal beacon to make it more visible in different lighting conditions



## PYRA PY X-MA-10 Series Xenon Audible-Visual Signal Beacons 166 x 114 x 124 mm

Pfannenberg PYRA PY X-MA-10 series audible-visual signal beacons announce hazardous conditions for industrial, commercial, and construction applications. They offer eight selectable tones and four DIP switch selectable flash rates.

- 101 dB at 1m audible output
- Large signaling range
- Inrush current limit and undervoltage detection
- Full synchronization of multi-light flashing systems
- Separate light and sound control
- Polycarbonate/ABS blend housing
- 90-135 VAC or 10-57 VDC operating voltages
- Suitable for indoor and outdoor use
- IP66 protection rating
- 10-year warranty



Starting at  
**\$337.00**  
(21555154055)



Audible-Visual Signaling Devices (cont)



PYRA PY L-MA-RGB Series  
LED Audible-Visual Signal Beacons  
166 x 114 x 134 mm

Pfannenberg PYRA PY L-MA-RGB series audible-visual signal beacons offer flexible, color changing LED technology with selectable signal modes combined with a 101 dB omnidirectional audible alarm. This signaling device offers a 180° x 360° visible field, operates in harsh environments, and can be surface, top, or wall mounted.

- 101 dB at 1m audible output
- Multiple colors with one LED light
- Permanent, blinking, and flashing signal modes
- Adjustable volume and brightness
- Separate light and sound control
- Flame retardant plastic housing
- 95-265 VAC or 10-60 VDC operating voltages
- Suitable for indoor and outdoor use
- IP66 protection rating
- 10-year warranty

PYRA PY X-LA-15 Series  
Xenon Audible-Visual Signal Beacons  
216 x 144 x 172 mm

Pfannenberg PYRA PY X-LA-15 series audible-visual signal beacons generate visual signals with four selectable flash frequencies. These powerful signal beacons offer 15 joules of flash energy, separate audio and visual controls, and a robust IP66 housing rated for harsh indoor and outdoor applications.

- 103 dB at 1m audible output
- Eight DIP switch selectable tones
- Xenon tube flashing strobe
- Selectable flash frequency and synchronized flash
- Control input to activate flash via PLC
- Polycarbonate/ABS blend housing
- Large visual coverage area
- 90-135 VAC or 18-30 VDC operating voltages
- Suitable for indoor and outdoor use
- NEMA 4/4X, IP66 protection rating
- 10-year warranty

PATROL PA X 1-05 Series  
Xenon Audible-Visual Signal Beacons  
109 x 81 x 172 mm

Pfannenberg PATROL PA X 1-05 series LED audible-visual signal beacons provide a 105 dB audible output at 1m, a 5 joule flash output, and 80 pre-programmed alarm tones. These devices can operate in harsh environments and are surface- or flush-mountable.

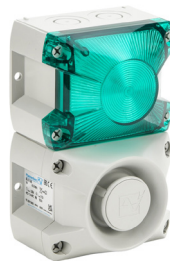
- 105 dB at 1m audible output
- 80 pre-programmed tones
- Up to four selectable tones can be configured in one device and used as alarm levels
- Xenon tube flashing strobe
- 1 Hz flash frequency
- Polycarbonate/ABS blend housing
- 90-135 VAC or 18-30 VDC operating voltages
- Suitable for indoor and outdoor use
- NEMA 4/4X, IP66 protection rating
- 10-year warranty



Starting at  
**\$360.00**  
(21556648055)



Starting at  
**\$425.00**  
(21565154055)

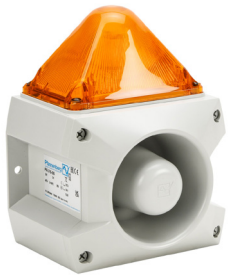


Starting at  
**\$346.00**  
(23311154055)

PATROL PA X 5-05 Series  
Xenon Audible-Visual Signal Beacons  
163 x 132 x 215 mm

Pfannenberg PATROL PA X 5-05 series audible-visual signal beacons provide a 107 dB at 1m audible output, a 5 joule flash output, and 80 pre-programmed audible alarm tones. These devices can operate in harsh environments and are surface- or flush-mountable.

- 107 dB at 1m audible output
- 80 pre-programmed tones
- Up to four selectable tones can be configured in one device and used as alarm levels
- Xenon tube flashing strobe
- 1 Hz flash frequency
- Polycarbonate/ABS blend housing
- 90-135 VAC or 18-30 VDC operating voltages
- Suitable for indoor and outdoor use
- NEMA 4/4X, IP66 protection rating
- 10-year warranty

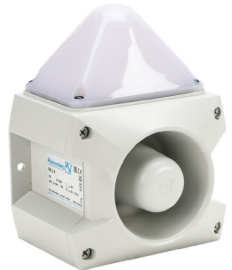


Starting at  
**\$436.00**  
(23351154055)

PATROL PA L 5 Series  
LED Audible-Visual Signal Beacons  
163 x 132 x 215 mm

Pfannenberg PATROL PA L 5 series LED audible-visual signal beacons provide a 107 dB at 1m audible output, a 5 joule flash output, and 80 pre-programmed audible alarm tones. These signaling devices can operate in harsh environments and are surface- or flush-mountable.

- 107 dB at 1m audible output
- 80 pre-programmed tones
- Up to four selectable tones can be configured in one device and used as alarm levels
- Permanent, blinking, and flashing signal modes
- Selectable colors
- Polycarbonate/ABS blend housing
- 195-265 VAC, 95-127 VAC, or 10-57 VDC operating voltages
- Suitable for indoor and outdoor use
- NEMA 4/4X, IP66 protection rating
- 10-year warranty

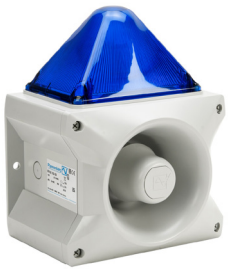


Starting at  
**\$436.00**  
(23353108055)

PATROL PA X 10-10 Series  
Xenon Audible-Visual Signal Beacons  
214 x 156 x 270 mm

Pfannenberg PATROL PA X 10-10 series audible-visual signal beacons offer 80 pre-programmed audible alarm tones. Up to four selectable alarm tones can be configured in one device and used for different alarm levels.

- 117 dB at 1m audible output
- 80 pre-programmed tones
- Up to four selectable tones can be configured in one device and used as alarm levels
- Xenon tube flashing strobe
- 1 Hz flash frequency
- Polycarbonate/ABS blend housing
- 90-135 VAC or 18-30 VDC operating voltages
- Suitable for indoor and outdoor use
- NEMA 4/4X, IP66 protection rating
- 10-year warranty



Starting at  
**\$630.00**  
(23361154055)

Audible-Visual Signaling Devices (cont)

PATROL PA X 20-15 Series  
Xenon Audible-Visual Signal Beacons  
214 x 181 x 270 mm

Pfannenbergs PATROL PA X 20-15 series audible-visual signal beacons offer 80 pre-programmed audible alarm tones and external control options to switch between a maximum of four alarm tones.

- 122 dB at 1m audible output
- 80 pre-programmed tones
- Up to four selectable tones can be configured in one device and used as alarm levels
- Xenon tube flashing strobe
- 1 Hz flash frequency
- Polycarbonate/ABS blend housing
- 90-135 VAC or 18-30 VDC operating voltages
- Suitable for indoor and outdoor use
- NEMA 4/4X, IP66 protection rating
- 10-year warranty



Starting at  
**\$1,013.00**  
(23372154055)

Audible Signaling Devices

PATROL PA 1/PA 5 Series  
Audible Signal Horns

Pfannenbergs PATROL PA 1/PA 5 series signal horns offer 80 pre-programmed audible alarm tones and feature rugged IP66 rated, impact-proof housings. In addition, the base connection terminals, non-detachable seals, and quick-locking elements provide easy mounting.

- Up to 107 dB at 1m audible output
- 80 pre-programmed tones
- Up to four selectable tones can be configured in one device and used as alarm levels
- Polycarbonate/ABS blend housing
- 95-127 VAC or 10-57 VDC operating voltages
- Suitable for indoor and outdoor use
- NEMA 4/4X, IP66 protection rating
- 10-year warranty



Starting at  
**\$158.00**  
(23310630055)

PATROL PA 10/PA 20 Series  
Audible Signal Horns

Pfannenbergs PATROL PA 10/PA 20 series signal horns offer 80 pre-programmed audible alarm tones and feature rugged IP66 rated, impact-proof housings. In addition, the base connection terminals, non-detachable seals, and quick-locking elements provide easy mounting.

- Up to 122 dB at 1m audible output
- 80 pre-programmed tones
- Up to four selectable tones can be configured in one device and used as alarm levels
- Polycarbonate/ABS blend housing
- 95-265 VAC or 10-60 VDC operating voltages
- Suitable for indoor and outdoor use
- NEMA 4/4X, IP66 protection rating
- 10-year warranty



Starting at  
**\$447.00**  
(23360630055)

Audible Signaling Devices (cont)

**PATLITE** Panel or Surface-Mount  
Electronic Sound Alarms

Audible alarms provide electronic sound notification for machines, systems, and/or process alarms, with a range of alarm tone choices.

- Panel or surface-mountable rectangular housing
- BD Series offers 32 different alarm tones, 90 dB @ 1m
- BSV series can play up to 15 pre-recorded alarm sounds/notifications, 85 dB @ 1m
- BM series with 2 selectable tones, up to 90 dB at 1m



Starting at  
**\$120.00**  
(BD-24AE-J)



Starting at  
**\$7.50**  
(270-24)

AutomationDirect ECX Series  
22mm Audible Alarm Buzzers

AutomationDirect ECX series 22mm panel-mounted alarm buzzers offer basic audible and visual alerts.

- Pulse tone buzzers up to 80dB @ 10cm
- Intermittent sound when energized
- IP65 protection rating

**Fuji Electric** Command Series  
22mm and 30mm Alarm Buzzers

Fuji Electric command series 22mm and 30mm alarm buzzers are used in machine tools, industrial machines, control panels, distribution panels, and instrumentation panels.

- Intermittent/continuous electronic sound
- Models available with or without red LED indicators
- Volume up to 90 dB @ 1m, depending on model



Starting at  
**\$32.00**  
(DR22B8-EB)

**WERMA** SIGNALTECHNIK  
22.5mm Panel-Mount Audible Buzzers

- 107 series non-illuminated with 80dB @ 0.1m in continuous or pulse-tone
- 109 series non-illuminated with 80dB @ 1m continuous or pulse-tone
- 110 series with 8 selectable tones at 100dB @ 1m
- 150 series with LED indicator and 80dB @ 1m continuous tone
- 450 series with LED indicator, alarm acknowledgment, and 80dB @ 1m continuous tone

Common Features:

- Mount in 22.5 mm holes
- Models available with or without red LED indicators
- Continuous or pulse-tone models
- 80 to 100 decibels
- Low current consumption
- IP65 protection rating



Starting at  
**\$32.00**  
(10700070)



## Audible Signaling Devices (cont)

Starting at  
**\$562.00**  
(YA11-1-D-01-RV)



**STAHL**

### YA11 Series Panel or Surface Mount Alarms

STAHL signal alarms provide an audible warning, alert, or information in the event of equipment malfunctions, safety issues, or when systems are starting up. These devices are certified for use in hazardous areas and built to withstand the harshest environments.

- Alternating two-tone, alternating fast tone, and continuous tone models
- Panel or surface mount
- Aluminum/ABS plastic housing
- NEMA 4X, IP66 rating
- Prewired with a 3-meter (118") cable for easy installation

## **PATLITE** Electronic Sound Signal Horns

Patlite electronic sound signal horns are rugged bracket-mounted alarms suitable for many environments.

- Indoor/outdoor mounting
- 12 to 24 VDC and 100 to 240 VAC versions
- 32 selectable electronic tones
- Maximum volume 110dB @ 1m



Starting at  
**\$245.00**  
(EHS-MITE)



Starting at  
**\$108.00**  
(57005267)



**WERMA**  
SIGNALTECHNIK

### Wall-Mount Signal Horns

WERMA electro-mechanical wall-mount signal horns offer loud continuous tone notification. Models with trumpet extensions direct and amplify the sound.

- 570 series with trumpet, 148mm diameter, 108dB @ 1m, plastic housing, IP55 rated
- 571 series with trumpet, 132mm diameter, 108dB @ 1m, corrosion-resistant aluminum housing, saltwater proof, IP55 rated
- 573 series 178mm rectangular, 105dB @ 1m, IP65 rated