

# Buck-Boost Transformer Installation Sheet

Revised on April, 2011 by T.E.

If you are using this unit as an *isolation transformer* with a primary of 120 or 240 or 480 volts and the secondary of 12/24, 16/32, or 24/48 (depending on the model) use the wiring diagram located on the inside of the cover to the wiring compartment.

If you are using this unit as an *auto transformer* to buck (lower) or boost (raise) the voltage by a 12 to 48 volts use the information below to select the proper wiring diagram. **Note: HV= Higher Voltage, LV= Lower Voltage when bucking and boosting.**

Single Phase Chart (Requires 1 transformer)			
Low Voltage (LV)	High Voltage (HV)	Model*	Diagram #
95	120	B	2
100	120	A	2
106	120	B	1
109	120	A	1
120	132	A	1
120	136	B	1
120	144	A	2
120	152	B	2
200	240	C	2
208	236	B	4
212	240	B	4
208	230	A	4
218	240	A	4
225	240	B	3
230	276	C	2
240	252	A	3
240	264	A	4
240	272	B	4
240	288	C	2
437	480	C	4
457	480	C	3
480	504	C	3
480	528	C	4

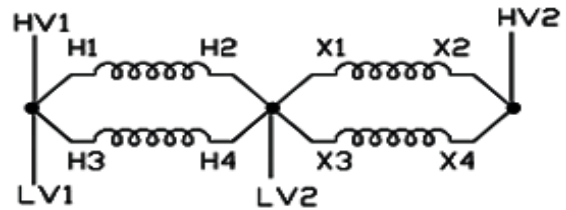


Diagram 1

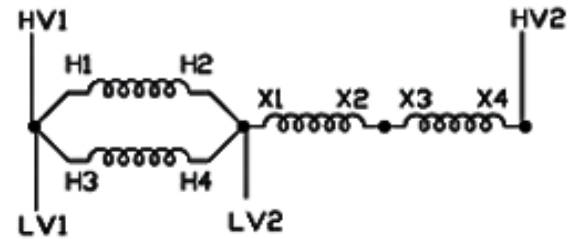


Diagram 2

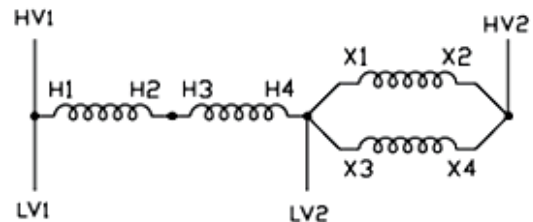


Diagram 3

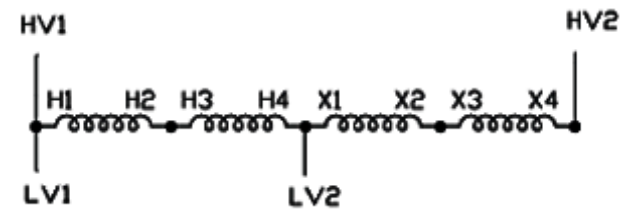


Diagram 4

\* Model A= 120x240V-12/24V  
 Model B= 120x240V-16/32V  
 Model C= 240x480V-24/48V

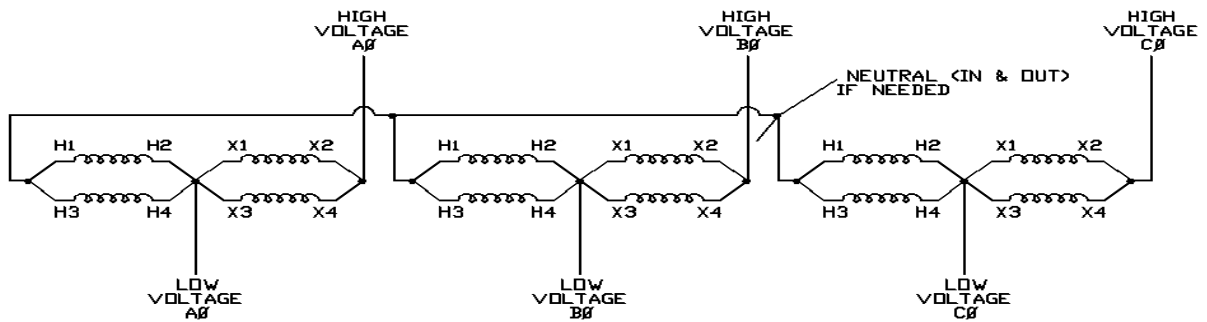
Before installing, confirm: unit supports 50Hz or 60 Hz as required

**Open Delta Chart**  
(Requires 2 transformers)

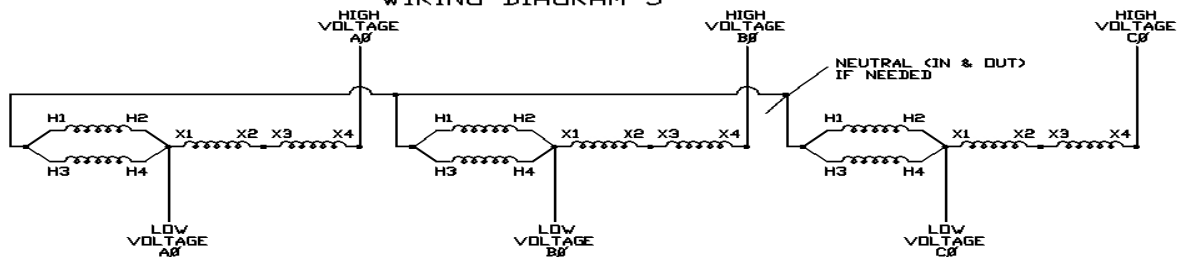
Low Voltage (LV)	High Voltage (HV)	Model *	Diagram #
200	240	C	10
208	236	B	12
212	240	B	12
208	230	A	12
218	240	A	12
225	240	B	11
229	240	A	11
230	253	C	9
230	276	C	10
240	252	A	11
240	264	A	12
240	272	B	12
240	288	C	10
437	480	C	12
457	480	C	11
480	504	C	11
480	528	C	12

**3-Phase Wye Chart**  
(Requires 3 transformers)

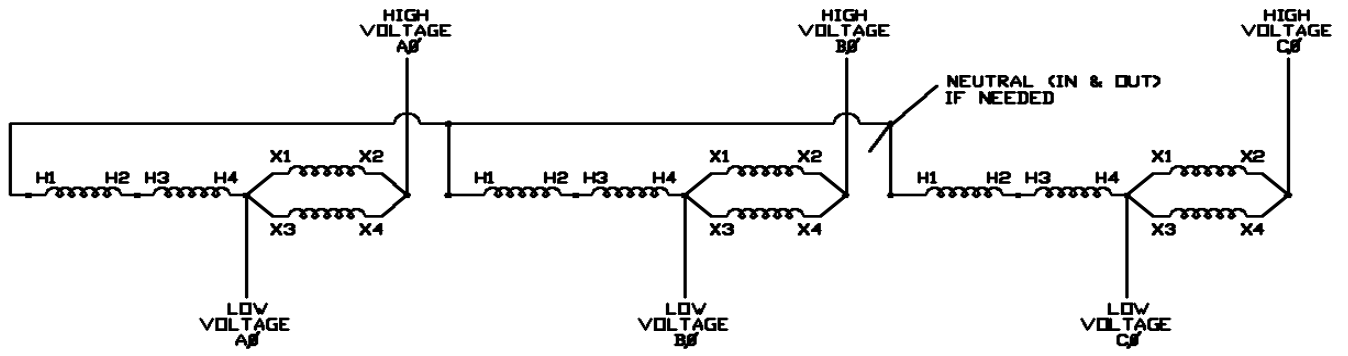
Low Voltage (LV)	High Voltage (HV)	Model*	Diagram #
164	208	B	6
173	208	A	6
183	208	B	5
189	208	A	5
208	229	A	5
208	235	B	5
208	249	A	6
208	263	B	6
346	416	C	6
367	416	B	8
378	416	A	8
390	416	B	7
397	416	A	7
398	438	C	5
398	478	C	6
416	437	A	7
416	443	B	7
416	457	A	8
416	471	B	8
416	498	C	6



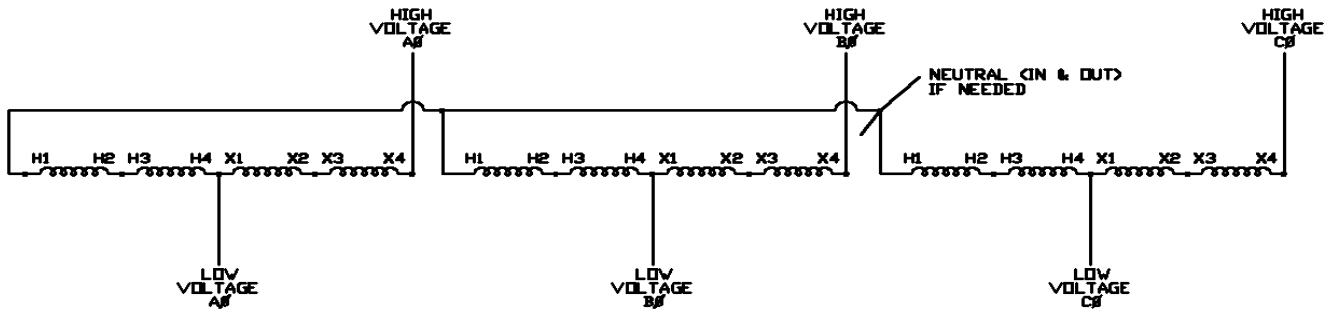
WIRING DIAGRAM 5



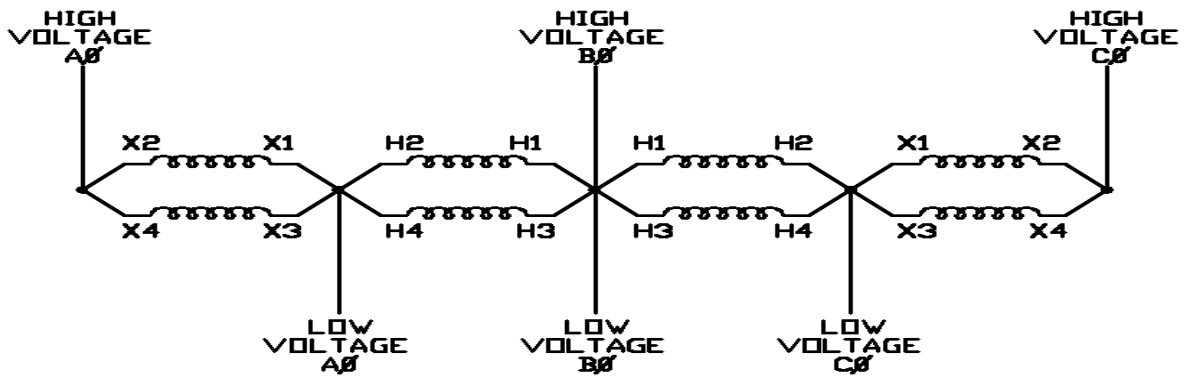
WIRING DIAGRAM 6



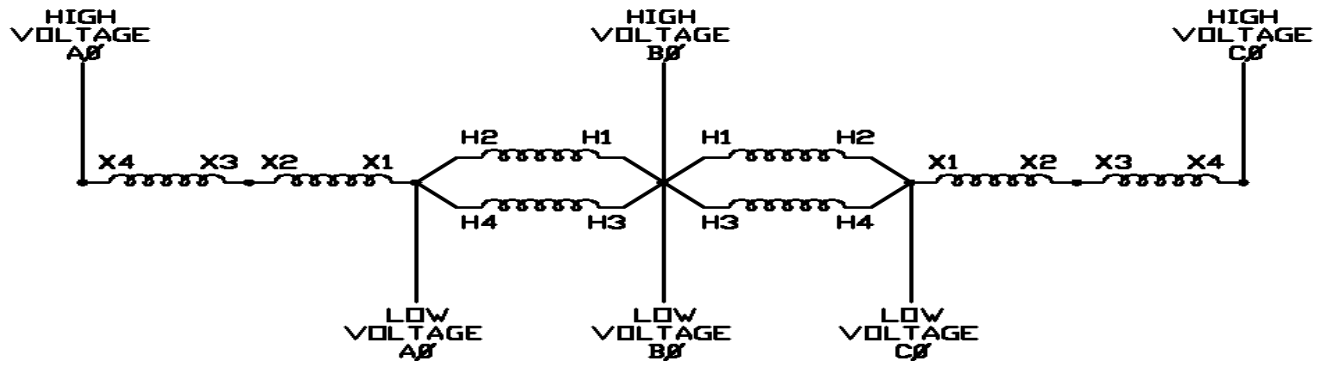
WIRING DIAGRAM 7



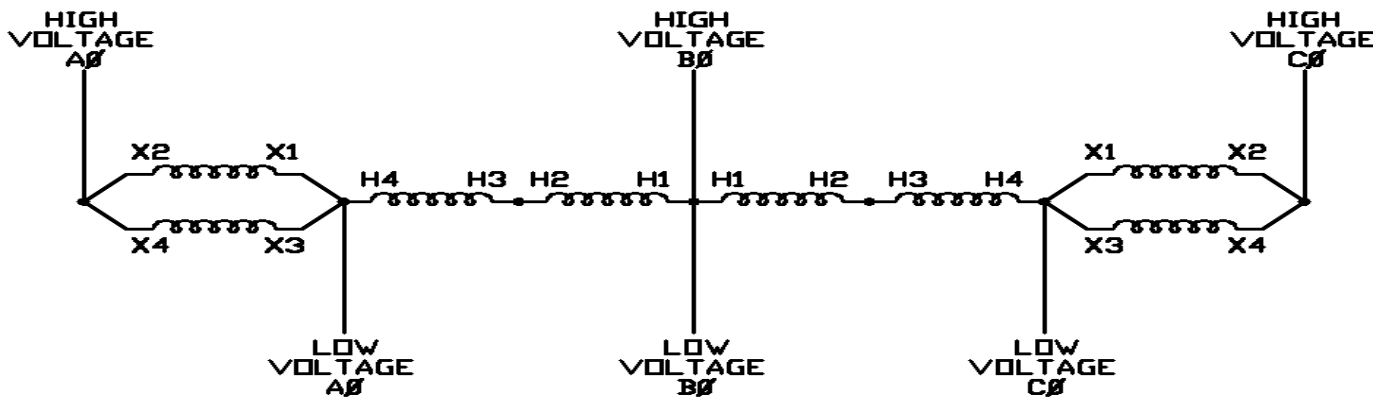
WIRING DIAGRAM 8



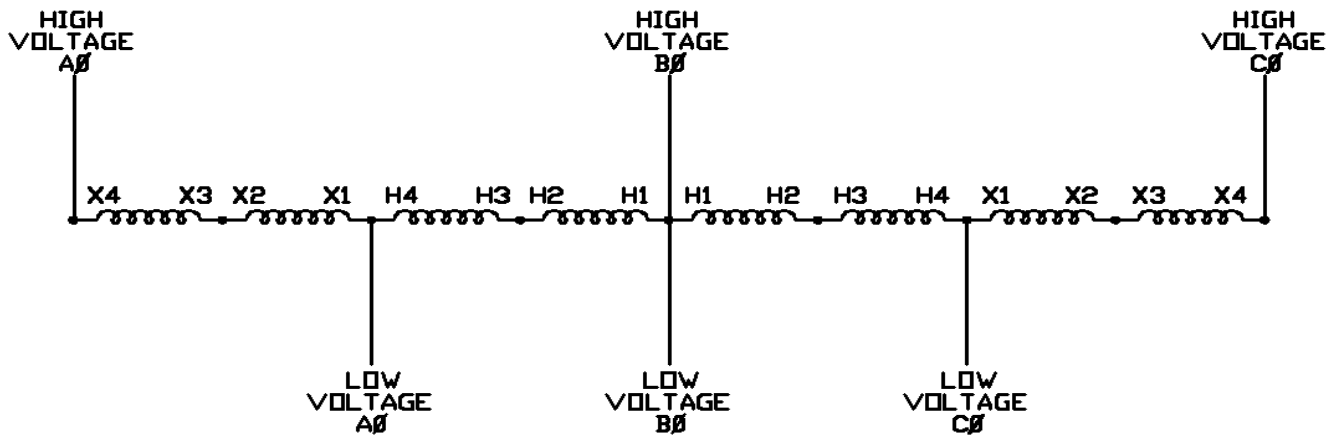
WIRING DIAGRAM 9



WIRING DIAGRAM 10



WIRING DIAGRAM 11



WIRING DIAGRAM 12