

REPLACEMENT PARTS



In This Chapter...

Replacement Parts Overview	9-2
Replacement Parts	9-2
Customizing the Function Keys Insert Label	9-3

Replacement Parts Overview

Part Number	Description
EA-MG-BZ2-BRK	Replacement mounting clip for C-more 4" and 6" Micro-Graphic panel and keypad bezels (pk of 8)
EA-MG-DC-CON	Replacement adapter DC power connector (pk of 5)
EA-MG4-GSK	Replacement mounting gasket for C-more 4" Micro-Graphic panels
EA-MG6-S6ML-GSK	Replacement mounting gasket for C-more 6" Micro-Graphic panels
EA-MG6-BZ2-GSK	Replacement mounting gasket for C-more 6" Micro-Graphic keypad bezels EA-MG6-BZ2(P)
EA-MG4-FKL	Replacement function key label insert for C-more 4" Micro-Graphic panels (pk of 4; 3 blank, 1 F1-F5)
EA-MG-S6ML-FKL	Replacement function key label insert for C-more 6" Micro-Graphic panels (pk of 5; 3 blank, 1 F1-F5 for landscape, 1 F1-F5 for portrait)
EA-4-COV2	4" Clear Screen Overlay (pk of 3)
EA-6-COV2	6" Clear Screen Overlay (pk of 3)

Replacement Parts

9

Mounting Clips

EA-MG-BZ2-BRK



(pk of 8)

DC Power Connector

EA-MG-DC-CON



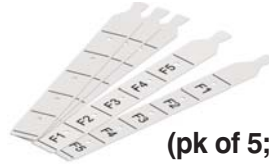
(pk of 5)

Panel Gaskets EA-MG4-GSK and EA-MG6-S6ML-GSK



6" Function Keys Label Inserts

EA-MG6-S6ML-FKL



(pk of 5; 3 blank,
1 F1-F5 for landscape,
1 F1-F5 for portrait)

4" Function Keys Label Inserts

EA-MG4-FKL



(pk of 4; 3 blank,
1 F1-F5)

Keypad Bezel Gasket

EA-MG6-BZ2-GSK



Clear Screen Overlays EA-4-COV2 and EA-6-COV2



(pk of 3)

Customizing the Function Keys Insert Label

Step 1 - Remove existing function key label insert using a small tool such as jeweler's screw driver.



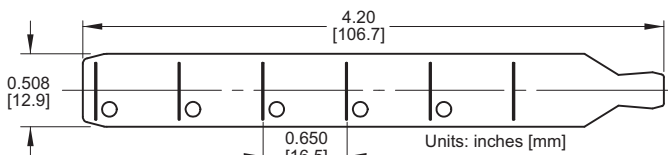
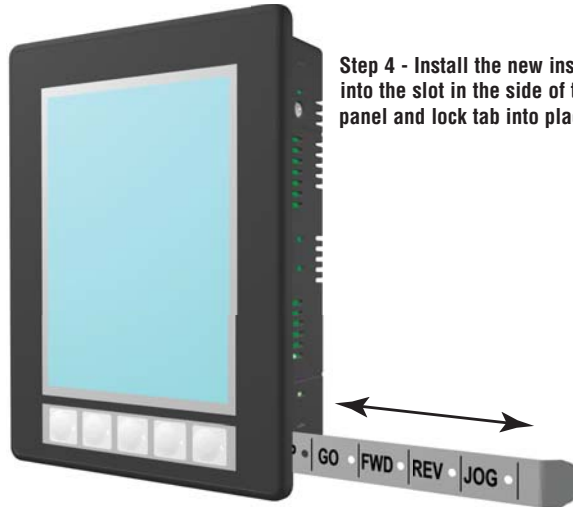
Step 3 - If desired, print and apply self-adhesive labels to the blank insert.



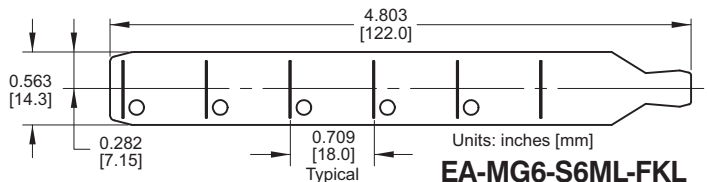
Step 2 - Remove the protective film from the blank key label insert.



Step 4 - Install the new insert into the slot in the side of the panel and lock tab into place.



EA-MG4-FKL



EA-MG6-S6ML-FKL