

BEZEL REPLACEMENT INSTRUCTIONS

P/N EA-8-BEZEL

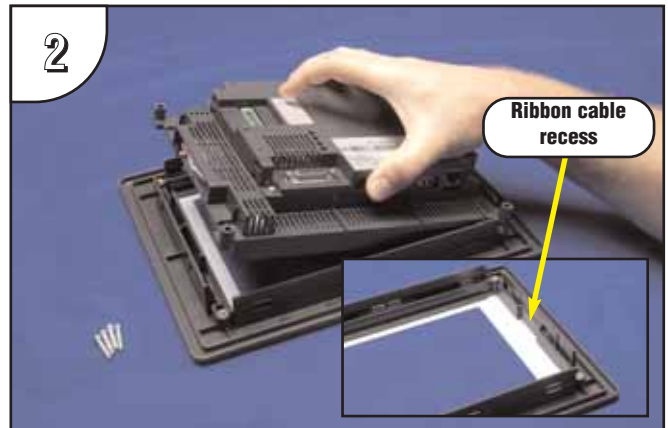


WARNING: This procedure should only be performed by qualified personnel who are experienced in working with electronic equipment. Take the necessary steps to prevent damage that may be caused by static electricity discharge. Disconnect input power to the touch panel before proceeding. Take care when locating the main electronics housing into the bezel to prevent pinching the ribbon cable between the housing and bezel.

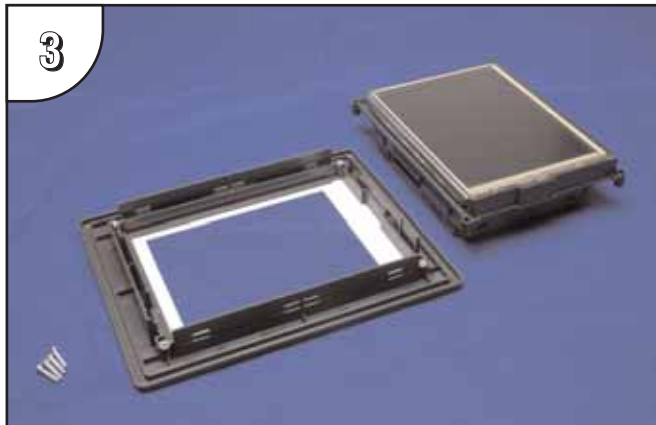
Preparation: Disconnect input power and all other connections, then remove the touch panel from the control cabinet. In a clean environment, place the panel face down on a lint-free soft surface to prevent scratching the front of the panel.



1 With power disconnected, use a #2 Phillips screwdriver to remove the four outer screws holding the touch panel's main electronics housing to the front bezel.



2 Lift the touch panel's main electronics housing from the front bezel. Set the four screws to the side and discard the original bezel. Observe the ribbon cable recess on the front bezel (see detail) for use in re-assembling the panel.



3 Place the new bezel facing down on the lint-free soft surface along with main electronics and four screws.



4 Position the touch panel's main electronics housing into the new bezel so that the flat ribbon cable on the housing matches up with the recess in the front bezel. Insert the four screws and tighten to a maximum of 70 oz-in [0.5 Nm].

1 - 8 0 0 - 6 3 3 - 0 4 0 5

www.automationdirect.com/c-more

Data Sheet: EA-8-BEZEL-DS, Rev. A

