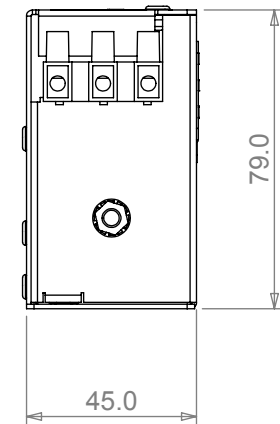
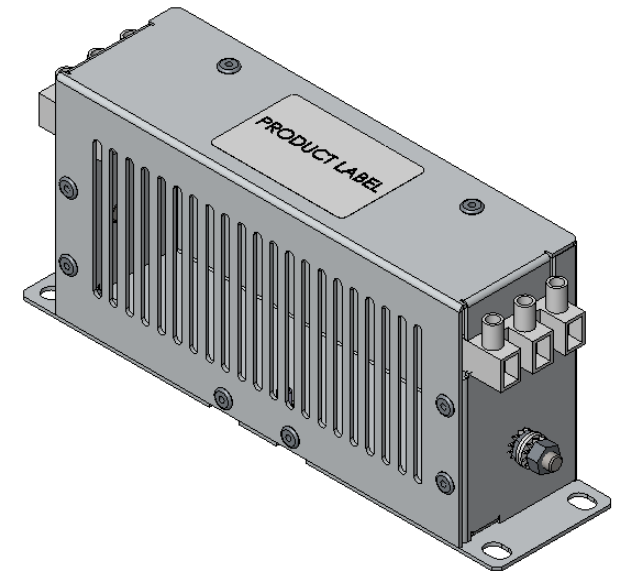
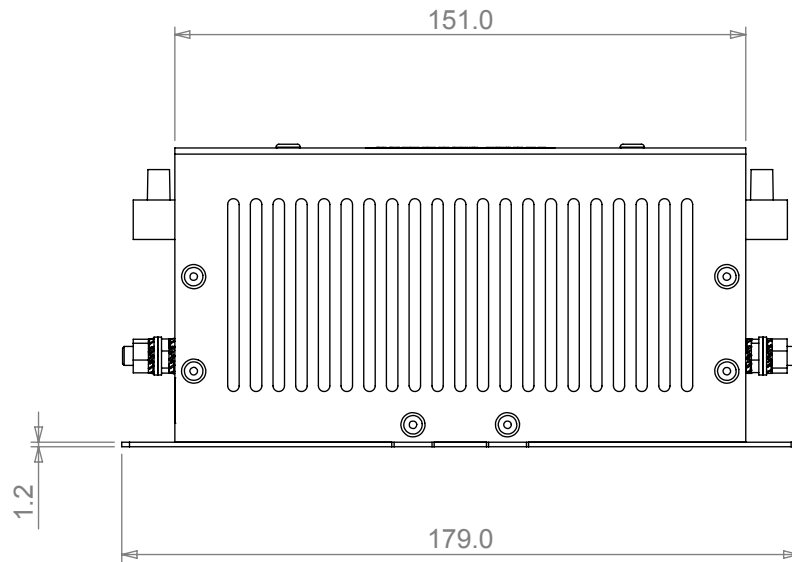
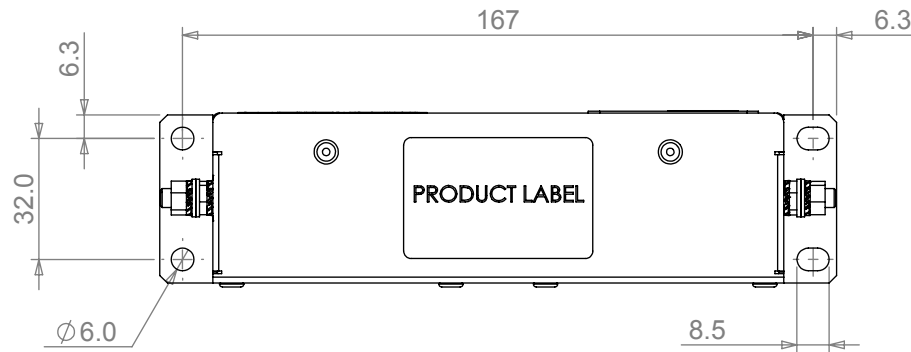


KMF310A

AKA

Description	3P 500V 10A TERMINAL FILTER
Device	rfi filter
Current	10A 40°C
Earthing	M5x15 stud ss 2Nm
Enclosure	aluminium 1.2mm
Loss	1.4W/ph
Leakage	6.8mA operating
Mass	0.77kg
Mounting	M5x4
PCB	n/a
Potting	air/resin
Power	8.3kW (2.4kW)
Protection	IP20
Resistance	14mR/ph
Residual	116V 5s
SCCT	5kA
Supply	400/480V 50/60Hz
Terminal	screw 6mm ² 0.8Nm strip 7.5mm
Varistor	n/a
Withstand	2900Vdc 60s
Altitude	1000m (3000m w/derating)
Bonding	25A 50/60Hz
Class	class I
Environment	-25/+85/21
Flammability	ULV2 min
Humidity	93% RH non-condensing
Insulation	500Vdc ≥3.5MR
Material	group IIIb
MTBF	22yrs (MIL-HDBK-217F)
Overload	135% 2hrs 150% 60s
Overvoltage	category II
Packaging	ASTM D7386
Pollution	degree II
Shock	15g 11mS
Spacing	≥50mm gap
Vibration	5-55Hz 350um 55-500Hz 2G
EU	CE EN60939
US	uR UL1283
CAN	cUR CSA22.2

TERMINALS HIDDEN



Tel No. +44(0)1724 273200
Website www.dem-uk.com



PROPRIETARY AND CONFIDENTIAL:
THE INFORMATION CONTAINED IN THIS DRAWING IS THE SOLE PROPERTY OF ALPHA 3 MANUFACTURING. ANY REPRODUCTION IN PART OR AS A WHOLE WITHOUT THE WRITTEN PERMISSION OF ALPHA 3 MANUFACTURING IS PROHIBITED.

DEM Manufacturing, Deltron Emcon House, Hargreaves Way, Sawcliffe Ind. Park, Scunthorpe, North Lincolnshire, DN15 8RF, UK

UNLESS OTHERWISE SPECIFIED DIMENSIONS ARE IN MILLIMETRES
LINEAR & RADIAL TOLERANCE:
NO DECIMAL PLACES ±0.5mm
1 DECIMAL PLACE ±0.25mm
2 DECIMAL PLACES ±0.125mm
ANGULAR TOLERANCE: ±1°

DO NOT SCALE DRAWING

THE FINISHED PRODUCT SHOULD BE CLEAN AND FREE FROM ALL LIQUIDS AND DEBRIS. SURFACES SHOULD BE OF UNIFORM APPEARANCE FREE FROM SHARP EDGES, BURRS AND CORROSION

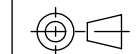
AUTHOR
DATE

SW
02/03/15

TITLE

SPECIFICATION

THIRD ANGLE PROJECTION



SHEET 1 OF 1

SCALE 1:2
A4

DRAWING NO.

KMF310A

ISSUE

07

Release

ROXBURGH ELECTRONICS LTD
FILTER INSERTION LOSS CHARACTERISTICS
CISPR 17 - 50 OHM METHOD

KMF310A

