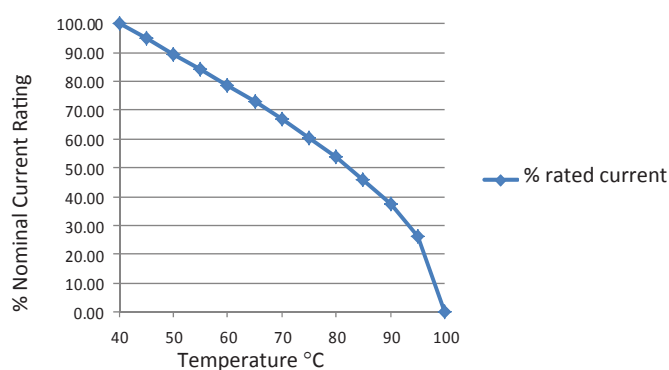


# RES10 Chassis Mounted General Purpose Filters

Roxburgh's RES10 series of single phase filters are designed for fast and easy chassis mounting. Featuring excellent attenuation of conducted radio frequency interference (RFI), the RES10 series is designed for use in general purpose filtering applications.



Temperature Derating Curve for EMC Filters Rated at 40°C Ambient and 100°C Maximum



**Call us on:**  
**Tel: +44 (0) 1724 273200**

## Features:

- 1 Amp to 60 Amp
- Single phase general purpose
- UL approved E191581

## Benefits:

- Compact size for rated current
- Fast-on, screw or wire terminations
- Quick and Easy Mounting

## Application Examples:

- Lighting
- Electrical and electronic equipment
- Consumer goods
- Household equipment
- Building automation
- Machinery
- Electronic data/communication processing equipment
- Office automation

**Full technical specifications enclosed**



**Performance Curves enclosed**

**Other options in this range on page 2**

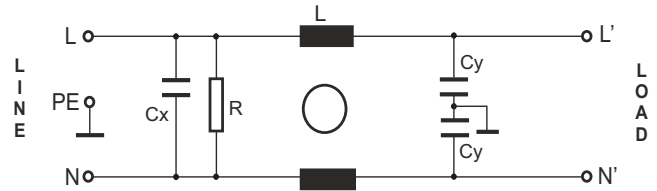
**DEM Manufacturing**  
Deltron Emcon House  
Hargreaves Way  
Sawcliffe Industrial Park  
Scunthorpe, North Lincolnshire.  
DN15 8RF



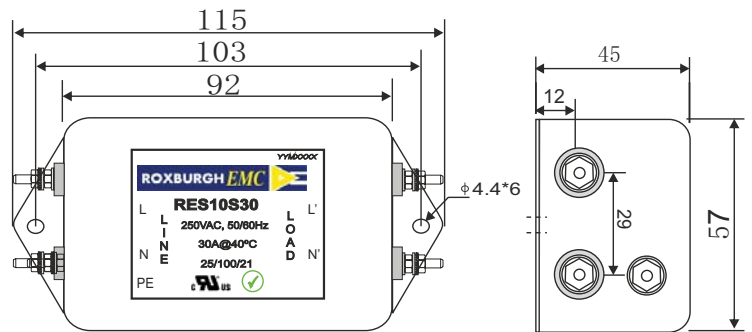
Tel: 44 (0) 1724 273200  
Fax: 44 (0) 1724 280353  
Email: sales@dem-uk.com  
Web: www.dem-uk.com/roxburgh

<b>RES10S30</b>	<b>Rev. 0</b>
<b>CHARACTERISTICS:</b>	
Rated Voltage:	250VAC max
Rated Current at Ambient:	30A @ 40°C
Operating Frequency:	DC-60HZ
Climatic Class (IEC60068-1):	25/100/21
Temperature Range:	-25°C to +100°C
Over load Current:	1.5 x Rated Ct. for 1 Min
Operational Leakage current : ( at 230VAC and Total C +/-20%)	0.87 mA max
Worst case Leakage current : ( N interrupted and Total C +/-20%)	<3.00 mA max
DCR @ 25°C (+/-25%) :	25 mΩ
Test Voltage (100%) for 2 sec:-	P-P: 1100VDC P-GND: 3000VDC
Ingress Protection:	IP 00
Weight (approximate):	420 gr
<b>FILTER PARAMETERS:</b>	
Total Inductance (P-P'+N-N') @10KHz:	0.7mH +50%,-30%
Total Capacitance (P-P/P-N) @1KHz:	0.47μF +/- -20%
Total Capacitance (P/N-GND) @1KHz:	20nF +/- -20%
Total Resistance (P-P/P-N):	1000KΩ +/- -10%
Total Resistance (P/N-GND):	
<b>APPROVALS:</b>	
REACH ROHS UL	APPROVED BY AJAY Date: 15-04-2014
	
	
Tel:- +44(0) 1724 273200 email:- sales@dem-uk.com web :- www.dem-uk.com/roxburgh	

**CIRCUIT DIAGRAM:**



**MECHANICAL DIMENSION (mm):**



**Note:**

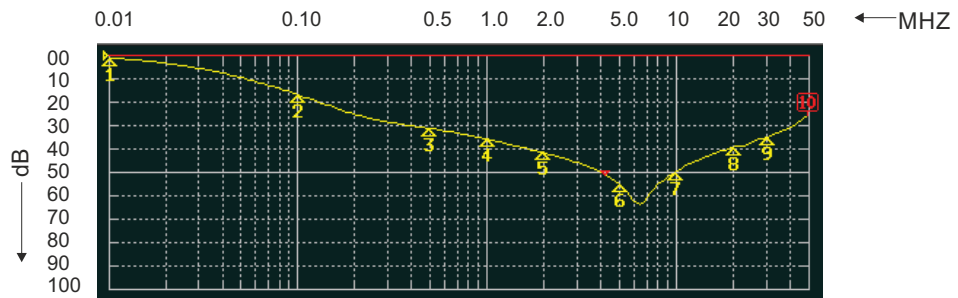
Housing matl. Fe with Ni Plated  
Screw M4 (1.3Nm max) Connections

TOLERANCE: +/-1.0 mm

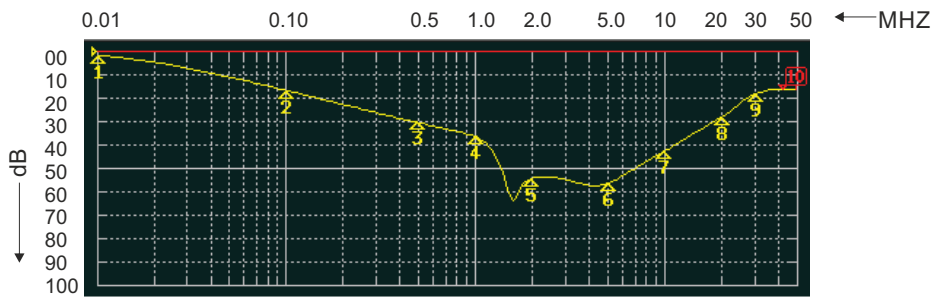


**ROXBURGH EMC**  
FILTER INSERTION LOSS CHARACTERISTICS  
CISPR 17 - 50 OHM METHOD

**RES10S30**



COMMON MODE






DIFFERENTIAL MODE



# RES10 Chassis Mounted General Purpose Filters

## Options Available:

Part Number	Rated Current @40°C A	Leakage Current @ 230V/50Hz mA	Inductance $\Sigma L$ mH	Capacitance $\Sigma Cx$ uF	Capacitance $\Sigma Cy$ nF	Resistance $\Sigma R$ K $\Omega$	Connection Type		
									
RES10F01	1	0.74	12	0.1	9.4	1000	F	W	
RES10F03	3	0.74	2.5	0.1	9.4	1000	F	W	
RES10F06	6	0.74	1.0	0.1	9.4	1000	F	W	
RES10F10	10	0.74	0.8	0.1	9.4	1000	F	W	
RES10F12	12	0.74	0.7	0.1	9.4	1000	F	W	
RES10F13	13	0.74	0.7	0.1	9.4	1000	F	W	
RES10F16	16	0.74	0.7	0.1	9.4	1000	F	W	
RES10F20	20	0.74	0.6	0.1	9.4	1000	F	W	
RES10S20	20	0.74	0.6	0.1	9.4	1000		W	S
RES10S30	30	0.87	0.7	0.47	20	1000			S
RES10S60	60	0.87	1	1.5	20	330			S

Call us on:

Tel: +44 (0) 1724 273200

**DEM Manufacturing**  
Deltron Emcon House  
Hargreaves Way  
Sawcliffe Industrial Park  
Scunthorpe, North Lincolnshire.  
DN15 8RF



Tel: 44 (0) 1724 273200

Fax: 44 (0) 1724 280353

Email: sales@dem-uk.com

Web: www.dem-uk.com/roxburgh