

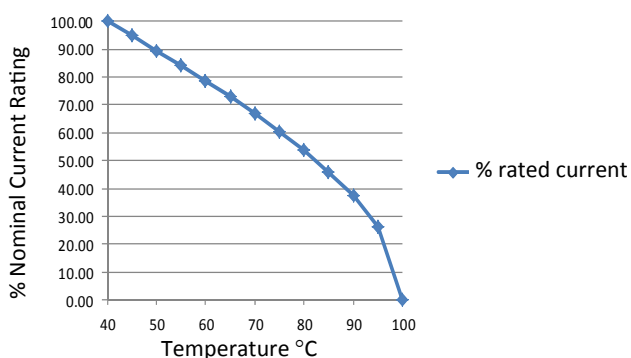
RES90 Chassis Mounted Filter

Very High Differential and Common Mode

Roxburgh's RES90 series is a multi-stage EMC filter with very high differential and common mode attenuation. Featuring excellent attenuation performance this series is suitable for noisy applications where increased filter performance is required.



**Temperature Derating Curve for EMC Filters
Rated at 40°C Ambient and 100°C Maximum**



Call us on:
Tel: +44 (0) 1724 273200

Features:

- Multi-stage
- Very high differential and common mode attenuation
- Excellent attenuation performance
- UL approved E191581
- For use from DC to 400Hz
- 1 Amp to 30 Amp

Benefits:

- Compact size for rated current
- Fast-on, screw or wire terminations
- Quick and Easy Mounting
- Available from UK Stock

Application Examples:

- Lighting
- Drives
- Electrical and electronic equipment
- Consumer goods
- Household equipment
- Building automation
- Machinery
- Electronic data/communication processing equipment
- Office automation

Full technical specifications enclosed

Performance Curves enclosed

Other options in this range on page 2

DEM Manufacturing

Deltron Emcon House
Hargreaves Way
Sawcliffe Industrial Park
Scunthorpe, North Lincolnshire.
DN15 8RF

ROXBURGH EMC



Tel: 44 (0) 1724 273200

Fax: 44 (0) 1724 280353

Email: sales@dem-uk.com

Web: www.dem-uk.com/roxburgh

RES90 Chassis Mounted Filter

Very High Differential and Common Mode

Options Available:

Part Number	Rated Current @40°C	Leakage Current @ 230V/50Hz	Inductance ΣL	Capacitance ΣCx	Capacitance ΣCy	Resistance ΣR	Connection Type	
	A	mA	mH	uF	nF	K Ω		
RES90F01	1	0.5	40	0.66	6.4	680	F	W
RES90F03	3	0.5	28	0.99	6.4	470	F	W
RES90F06	6	0.67	16	1.41	8.6	330	F	W
RES90F10	10	0.67	16	1.41	8.6	330	F	W
RES90F16	16	1.02	08	3.00	22	220	F	W
RES90F20	20	1.02	5.4	3.00	22	220	F	
RES90S20	20	1.02	5.4	3.00	22	220		S
RES90S30	30	1.02	3.0	3.00	22	220		S



Call us on:
Tel: +44 (0) 1724 273200

DEM Manufacturing
 Deltron Emcon House
 Hargreaves Way
 Sawcliffe Industrial Park
 Scunthorpe, North Lincolnshire.
 DN15 8RF



Tel: 44 (0) 1724 273200
 Fax: 44 (0) 1724 280353
 Email: sales@dem-uk.com
 Web: www.dem-uk.com/roxburgh

RES90S30**Rev. 0****CHARACTERISTICS:**

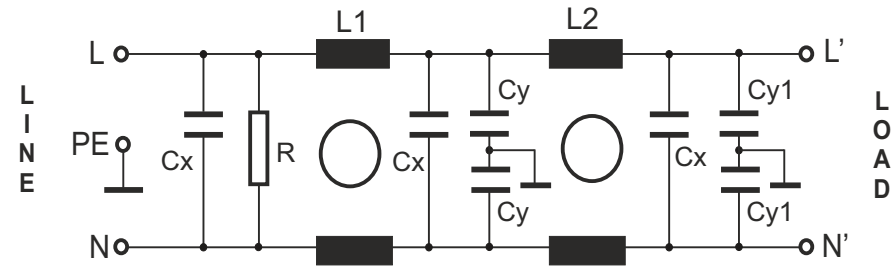
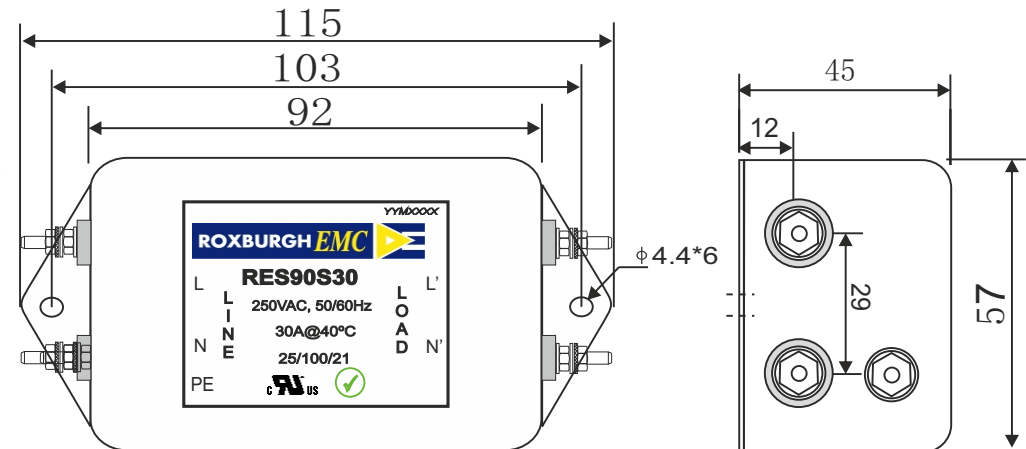
Rated Voltage:	250VAC max
Rated Current at Ambient:	30A @ 40°C
Operating Frequency:	DC-400HZ
Climatic Class (IEC60068-1):	25/100/21
Temperature Range:	-25°C to +100°C
Over load Current:	1.5 x Rated Ct. for 1 Min
Operational Leakage current : (at 230VAC and Total C +/-20%)	1.02 mA max
Worst case Leakage current : (N interrupted and Total C +/-20%)	<3.46 mA max
DCR @ 25°C (+/-25%) :	8 mΩ
Test Voltage (100%) for 2 sec:-	P-P: 1100VDC
	P-GND: 3000VDC
Ingress Protection:	IP 00
Weight (approximate):	550 gr

FILTER PARAMETERS:

Total Inductance (P-P'+N-N') @10KHz:	3.0mH +50%,-30%
Total Capacitance (P-P/P-N) @1KHz:	3μF +/- 20%
Total Capacitance (P/N-GND) @1KHz:	22nF +/- 20%
Total Resistance (P-P/P-N):	220K Ω +/- 10%
Total Resistance (P/N-GND):	

APPROVALS:REACH
ROHS
ULAPPROVED
BY
AJAY

Date: 29-03-2014

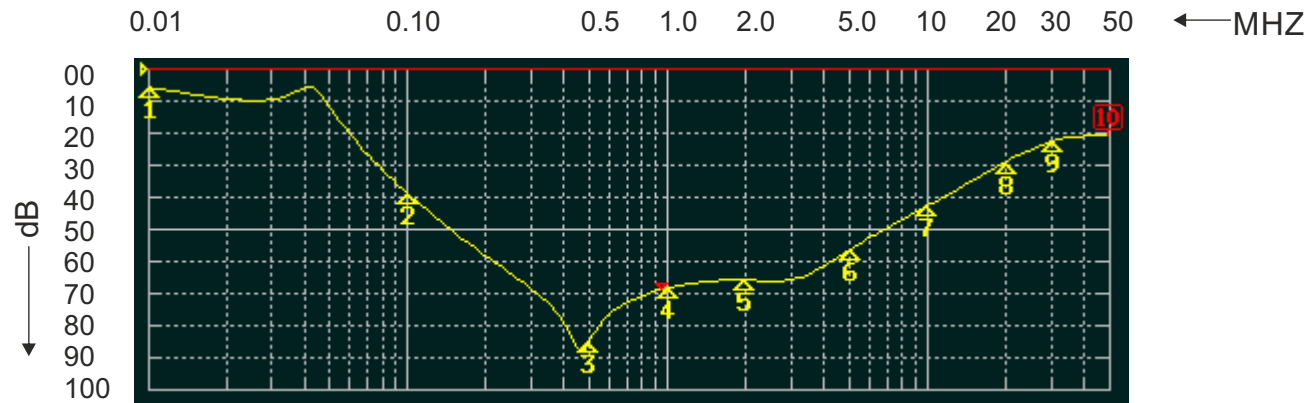
CIRCUIT DIAGRAM:**MECHANICAL DIMENSION (mm):****Note:**Housing matl. Fe with Ni Plated
Screw M4 (1.3Nm max) Connections

TOLERANCE: +/-1.0 mm

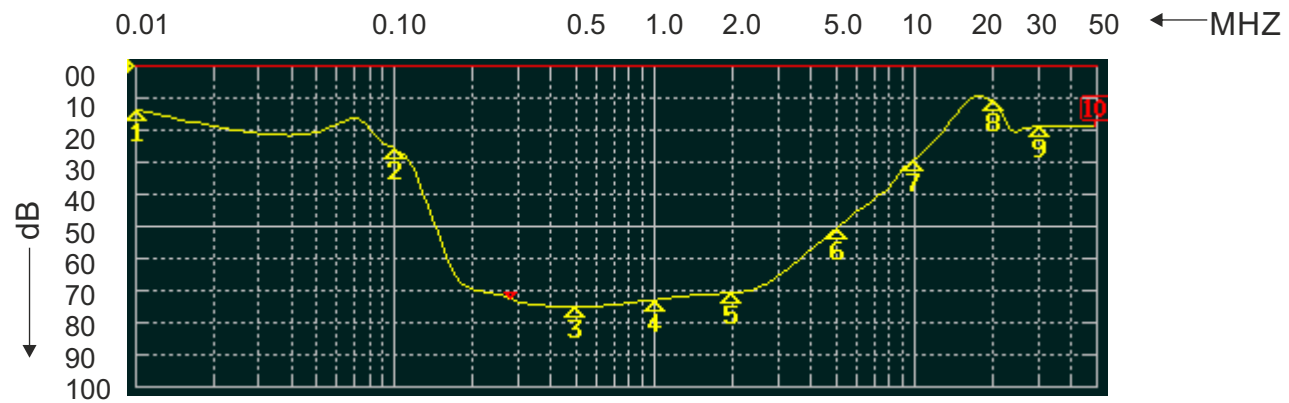


ROXBURGH EMC
FILTER INSERTION LOSS CHARACTERISTICS
CISPR 17 - 50 OHM METHOD

RES90S30



COMMON MODE



DIFFERENTIAL MODE

