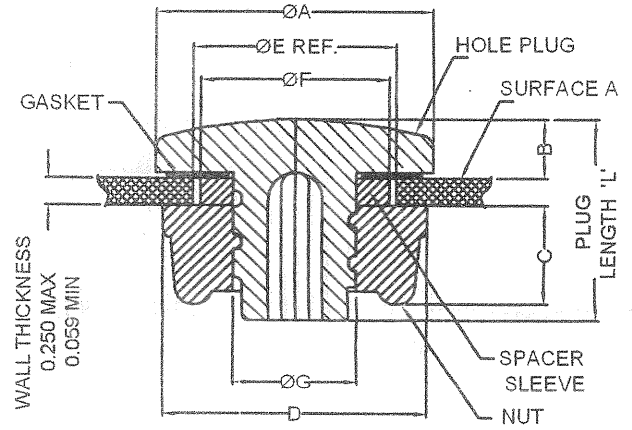


INSTRUCTIONS FOR
ASSEMBLING HOLE PLUG

1. CHOOSE REQUIRED SIZE OF HOLE PLUG
2. DRILL HOLE TO SIZE ON BODY AS PER CHART PROVIDED.
IMPORTANT: ENSURE SURFACE "A" IS FREE FROM BURR & FIBER PULLOUT.
3. PLACE / STICK THE EPDM GASKET ON HOLE PLUG
4. SLIP ON APPROPRIATE SPACER SLEEVE OVER THREADED END OF THE PLUG, IF REQUIRED. (SEE CHART)
5. PUSH THE HOLE PLUG INTO THE DRILLED HOLE.
6. TIGHTEN NUT TO 1 lb-ft FOR "A" DIA RANGE OF 1.0" - 1.5"
TIGHTEN NUT TO 2 lb-ft FOR "A" DIA RANGE OF 2.0" - 2.75"
TIGHTEN NUT TO 10-12 lb-ft FOR "A" DIA RANGE OF 3.38" - 5.0"
7. MAXIMUM WALL THICKNESS : 0.25" (6.35 mm)
MINIMUM WALL THICKNESS : 0.059" (16ga, 1.5 mm)
8. HOLE PLUGS CAN BE USED IN THINNER WALL SECTIONS WHEN NOT UTILIZING THE SPACER SLEEVE

SECTION OF ASSEMBLY



L=18.24 [0.72"] FOR "A" DIA RANGE OF 1.0" - 2.75"
L =23.95 [0.94"] FOR "A" DIA RANGE OF 3.38" - 5.0"

INDUSTRY GUIDE FOR HOLE PLUG

Ø A	^{+0.05} / _{-0.00} B	C	D ACROSS FLATS	Ø E REF. - NOM. HOLE DIA. RANGE	Ø F	Ø G	COMMON INDUSTRY APPLICATIONS
1.00" (25.40)	0.22" (5.59)	0.35" (8.89)	0.88" (22.35)	0.50" - 0.56" (12.70 - 14.29)	N/A	0.44" (11.18)	1/2" DIA.HOLE
				0.63" - 0.69" (16.00 - 17.46)	0.56" (14.22)		5/8" DIA.HOLE
				0.75" - 0.81" (19.05 - 20.64)	0.68" (17.27)		3/4" DIA.HOLE
1.20" (30.48)	0.22" (5.59)	0.33" (8.38)	1.04" (26.39)	0.88" (22.35)	N/A	0.81" (20.57)	1/2" CONDUIT
1.50" (38.10)	0.22" (5.59)	0.38" (9.63)	1.38" (35.05)	0.88" - 1.00" (22.35 - 25.4)	N/A	0.85" (21.59)	1/2" CONDUIT. 22MM PB
				1.06" - 1.12" (26.92 - 28.45)	1.03" (26.16)		3/4" CONDUIT
				1.22" - 1.28" (30.73 - 32.51)	1.19" (30.22)		30mm PB
2.00" (50.80)	0.22" (5.59)	0.38" (9.63)	1.88" (47.75)	1.38" - 1.50" (35.05 - 38.10)	N/A	1.35" (34.29)	1" CONDUIT
				1.69" - 1.75" (42.67 - 44.45)	1.65" (41.91)		1 1/4" CONDUIT
2.75" (69.85)	0.22" (5.59)	0.41" (10.41)	2.63" (66.67)	2.00" - 2.12" (50.80 - 53.85)	N/A	1.97" (50.04)	1 1/2" CONDUIT
				2.50" - 2.56" (63.50 - 65.09)	2.44" (61.89)		2" CONDUIT
3.38" (85.85)	0.22" (5.59)	0.34" (8.63)	3.38" (85.85)	3.00" (76.20)	N/A	2.97" (75.44)	2 1/2" CONDUIT
4.00" (101.60)	0.22" (5.59)	0.34" (8.63)	4.00" (101.60)	3.62" (91.95)	N/A	3.59" (91.19)	3" CONDUIT
4.50" (114.30)	0.22" (5.59)	0.38" (9.63)	4.50" (114.30)	4.12" (104.65)	N/A	4.09" (103.88)	3 1/2" CONDUIT
5.00" (127.00)	0.22" (5.59)	0.41" (10.41)	5.00" (127.00)	4.62" (117.35)	N/A	4.59" (116.58)	4" CONDUIT

1 3/8 - 1 3/4