

Using NetEdit

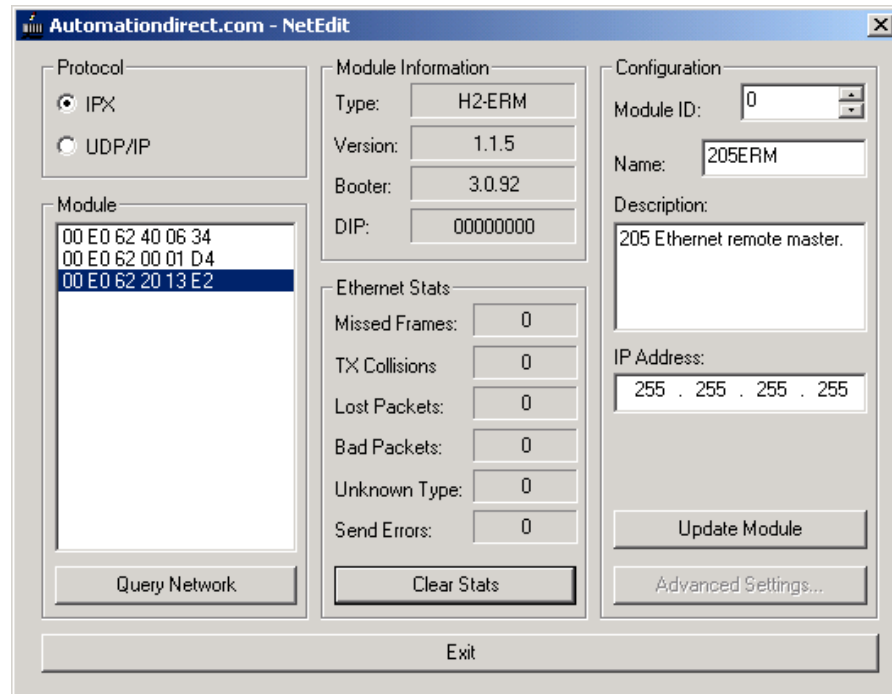
In This Chapter. . . .

- Using NetEdit
- Using NetEdit to Configure H4–EBC Base

Using NetEdit

The NetEdit Window

NetEdit is a software utility which can be used to set network identifiers (Module ID, or IP Address) for the network master and slave modules. NetEdit is accessed from the ERM Workbench “Select Slaves” window or the View>NetEdit Window. NetEdit can also be used for diagnostic and troubleshooting tasks. This section steps through the individual segments of the NetEdit utility and the function of each.

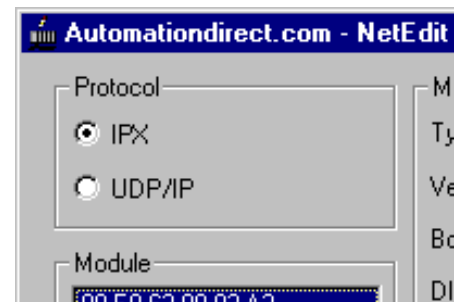


Ethernet Communication Protocol

In the upper left corner of the NetEdit window, you will find a box labeled *Protocol*. In the box, there are two choices: IPX and UDP/IP. The ERM and its slave modules understand IPX *and* UDP/IP protocols. Both protocols are *permanently resident* in the firmware of the modules.

When you click on one of these radio buttons, you are selecting the protocol you want your PC to use to allow NetEdit to communicate with the master or slave modules. You are *not* telling the module which protocol to use. IPX is a Novell standard in widespread use, and UDP/IP is a popular protocol supported by the TCP/IP suite of protocols in your PC.

The figure to the right shows the Protocol selection box in the upper left corner of the NetEdit window. The choice you make here tells **your PC** which protocol to use to link NetEdit to the master or slave modules. You are not selecting which protocol the remote I/O network will use.

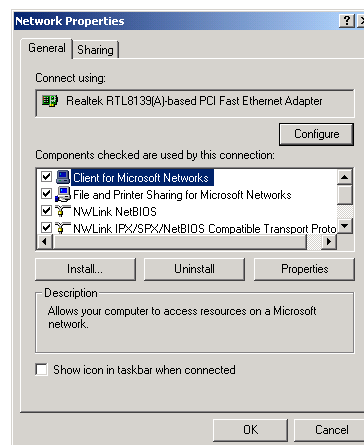


Adding Network Protocol Support to Your PC

You may have already set up your PC with selected networking protocols for Ethernet communications. If not, you will need to select the protocols now for communication with the ECOM module. We strongly recommend that you include the IPX protocol. The description below applies to Windows 2000 (Windows 98/NT have slightly different steps). If you are not familiar with this procedure, you may need to have your Network Administrator perform this task.

For Windows 2000, go from My Computer on your Windows desktop to Control Panel. Double click on Network and Dial-up Connections, then double click on the desired Network Device to see the installed Protocols. If IPX is not listed among the protocols already loaded, add it now by clicking on the Install button. For Windows XP, go from Start>Settings>Control Panel. The steps are the same as Windows 2000 from this point.

Add the TCP/IP protocol if it is necessary for your application. Choose the TCP/IP selection to get UDP/IP support. Also add the IPX protocol if it is not already active.



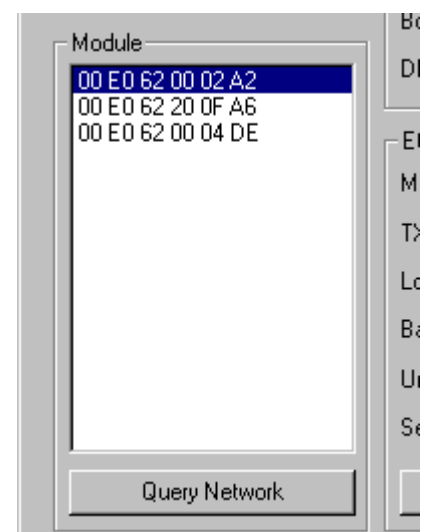
NOTE: We strongly recommend you load IPX protocol on your PC and use it for your module links. Use UDP/IP in your application, if required, but also add IPX to your list of active protocols. Having IPX loaded on your PC gives you a backup for troubleshooting communication problems.

Ethernet Address

The *Module* box lists the Ethernet Addresses of the modules currently on the remote I/O network.

If modules are added or removed from the network, click on the Query Network button to update the list. Notice that the Ethernet Address is the factory-assigned address that is on the permanent label on the module.

Select a specific module here by clicking on the Ethernet Address or by using the arrow keys. The selected module is highlighted.



Module Information

The *Module Information* box provides the module Type, Version, Booter and Dip switch setting. The Type is the catalog number of the module. The Version and Booter refers to the module's firmware version. The Dip switch setting reflects the Module ID.

Module Information	
Type:	H2-ERM
Version:	1.0.558
Booter:	3.0.34
DIP:	00000000



NOTE: The module information and settings on this page apply to the selected (highlighted) module. To select a module, click on its Ethernet Address in the Module box.

The *Ethernet Stats* are statistics related to communication errors. These statistics are explored in Chapter 6, Maintenance and Troubleshooting.

Click on the Clear Stats button to reset all categories to 0 (zero).

Ethernet Stats	
Missed Frames:	0
TX Collisions	0
Lost Packets:	0
Bad Packets:	0
Unknown Type:	0
Send Errors:	0
<input type="button" value="Clear Stats"/>	

Module ID / IP Address

The *Configuration* box allows you to assign a **Module ID**. Module IDs must be unique for each module, but they do not have to be in sequence. The DIP switches must all be set to zero to enable any software to change the Module ID.

The Name field and Description field are optional. The ERM cannot address a slave by Name or Description.

To set an **IP Address**, highlight the number in each of the four boxes, and overwrite the number. Use the twelve-digit number assigned to the module by your network administrator. If you change the IP Address, do not use the number "255" in any field. Doing so will cause communication problems.

The "Update Module" button sends all entries to the module's flash memory.

The "Advanced Settings" button is explained in the next section.

Configuration	
Module ID:	<input type="text" value="0"/>
Name:	<input type="text" value="205ERM"/>
Description:	<input type="text" value="205 Ethernet remote master."/>
IP Address:	<input type="text" value="255 . 255 . 255 . 255"/>
<input type="button" value="Update Module"/>	
<input type="button" value="Advanced Settings..."/>	

Using NetEdit to Configure the H4-EBC Base



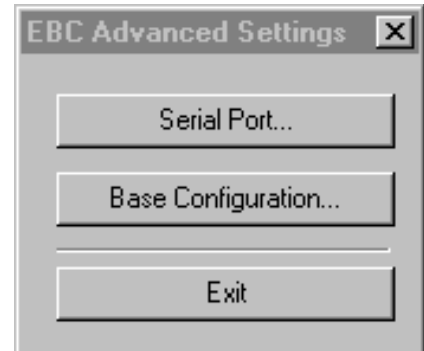
Advanced Settings

NOTE: The following configuration information applies only to the H4-EBC(-F) and the DL405 I/O. The H2-EBC(-F) and associated DL205 I/O are self-configuring and do not require this additional step.

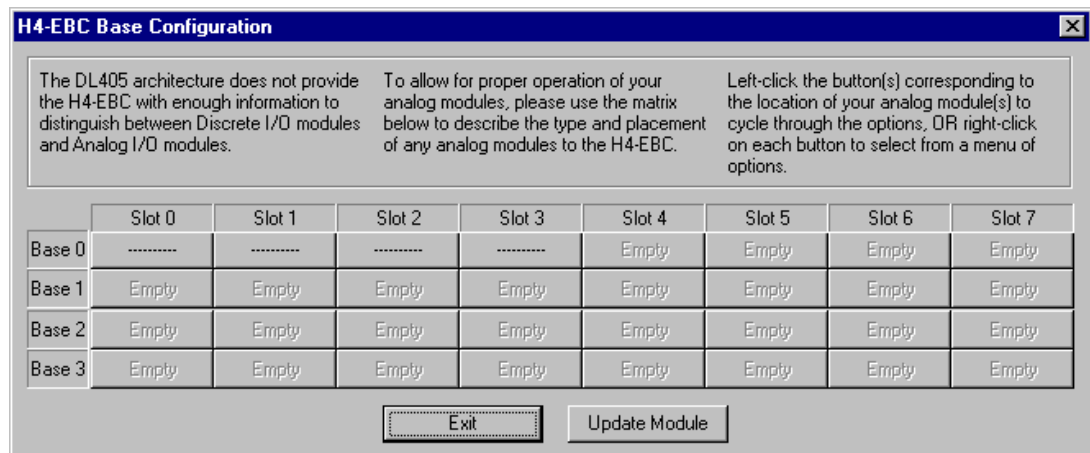
The Advanced Settings button in the Configuration box of Net Edit brings up the *EBC Advanced Settings* window.

The **EBC Serial Port** is **not** supported when the ERM module is used as the network master.

Clicking on the **Base Configuration** button causes the *EBC Base Configuration* screen to appear.



When you click on the Base Configuration button (top of page) the *H4-EBC Base Configuration* screen pops up, as shown below. The H2-EBC and the T1H-EBC are self-configuring and do not require this step.



The default symbol “-----” appears on the configuration screen where digital or analog modules are present. For digital modules, you do not need to make any changes. The H4-EBC recognizes the digital modules and is self-configuring for the digital modules.

Configuring Analog Modules

If you are using analog modules, you must let the H4-EBC know that by doing the following. Click on the slot location where the analog module is located. Continue clicking on the same slot location until the part number of your analog module appears.

	Slot 0	Slot 1	Slot 2	Slot 3	Slot 4	Slot 5	Slot 6	Slot 7
Base 0	-----	-----	F4-08RTD	F4-04DA-n	Empty	Empty	Empty	Empty
Base 1	Empty	Empty	Empty	Empty	Empty	Empty	Empty	Empty
Base 2	Empty	Empty	Empty	Empty	Empty	Empty	Empty	Empty
Base 3	Empty	Empty	Empty	Empty	Empty	Empty	Empty	Empty

Once the correct part numbers appear for each of your analog modules, click the **Update Module** button to save the configuration into flash memory onboard the module. Leave the symbol “-----” wherever you have a digital module.

Configuring the High Speed Counter Module

If you are using a D4-HSC High Speed Counter module, the word “Intelligent” will appear in gray. The High Speed Counter module is configured automatically (see below). No other action is required other than clicking on the **Update Module** button.

	Slot 0	Slot 1	Slot 2	Slot 3	Slot 4	Slot 5	Slot 6	Slot 7
Base 0	-----	-----	F4-04ADS	Intelligent	Empty	Empty	Empty	Empty
Base 1	Empty	Empty	Empty	Empty	Empty	Empty	Empty	Empty
Base 2	Empty	Empty	Empty	Empty	Empty	Empty	Empty	Empty
Base 3	Empty	Empty	Empty	Empty	Empty	Empty	Empty	Empty