

Think & Do Profibus Network Setup with the H0–PSCM

In This Appendix. . . .

— Think & Do Profibus Network Setup

Think & Do Profibus Network Setup with H0-PSCM

For those who are using the H0-PSCM as a slave with Think & Do, the following steps will guide you through the setup for your Think & Do Profibus network.

Getting the T & D Network Started

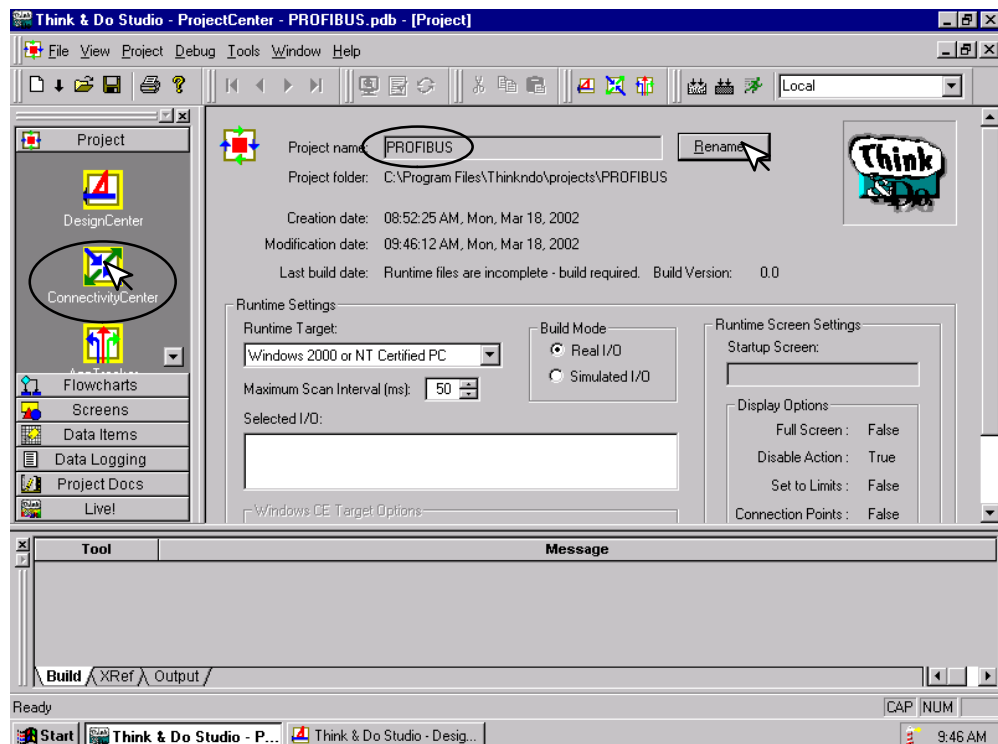
The first thing that will be needed for the Think & Do Profibus network is a Profibus interface card for your PC. We use the SST™ Interface Card for Profibus, produced by Woodhead Industries, Inc.. More information about the purchase of this card can be obtained from their website, www.mySST.com. The PC used for the setup procedure explained here uses this interface card. Whenever this card has been installed, run the SST Profibus Configuration Tool to configure the Profibus card before beginning the Think & Do setup (refer to Appendix D).

The following setup uses Think & Do Studio; however, if you have Think & Do LIVE installed on your PC, you will use I/O View instead of the Connectivity Center to setup the H0-PSCM DP Slave on the network.

T & D Studio setup for PC control

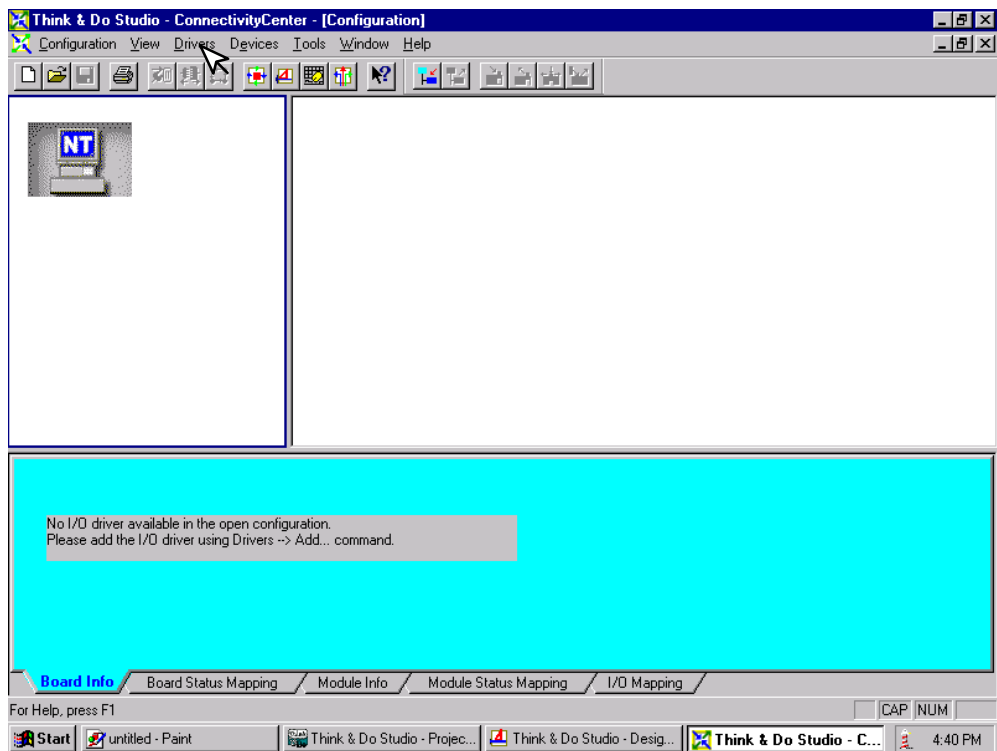
First, be sure that the Node Address has been set to a proper address (3 to 125 for the H0-PSCM). Next, open Think & Do Studio and select **File > New** in the Project Center window. Use the following procedure to setup the H0-PSCM with Think & Do Studio. The procedure assumes that the Profibus cable is connected from the SST card to your H0-PSCM Profibus Slave Communications Module.

1. Rename the project (the example name is PROFIBUS).
2. Click on the **ConnectivityCenter** button.



This window will appear with a note to add the I/O driver.

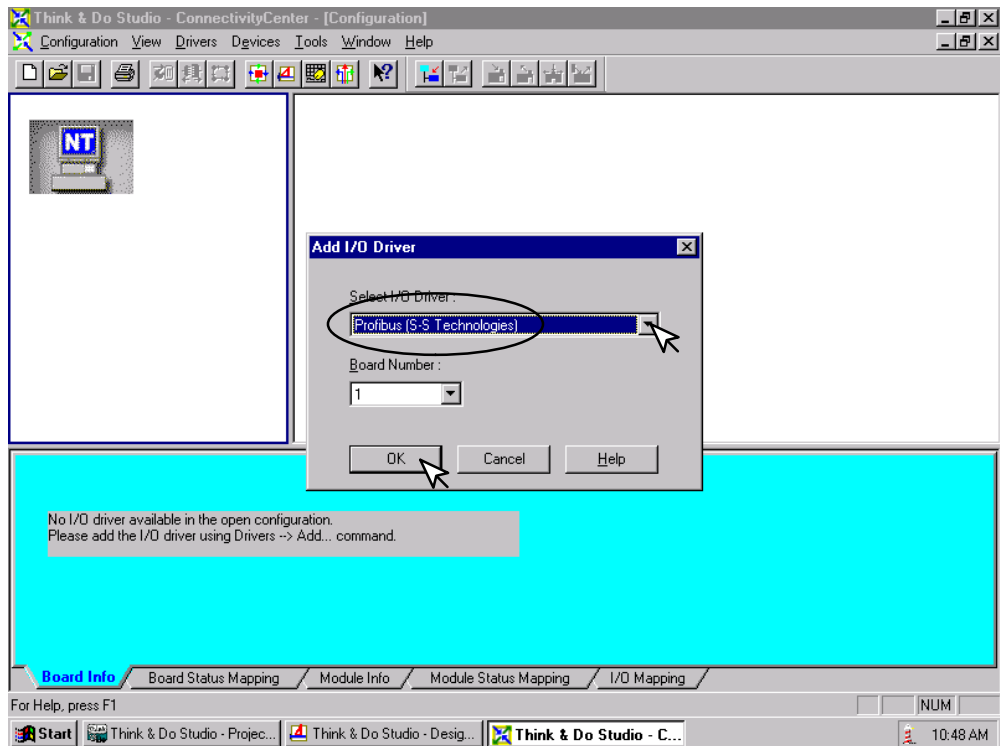
3. Click on **Drivers** > **Add** in the drop down window which appears.



The **Add I/O Driver** window will drop down.

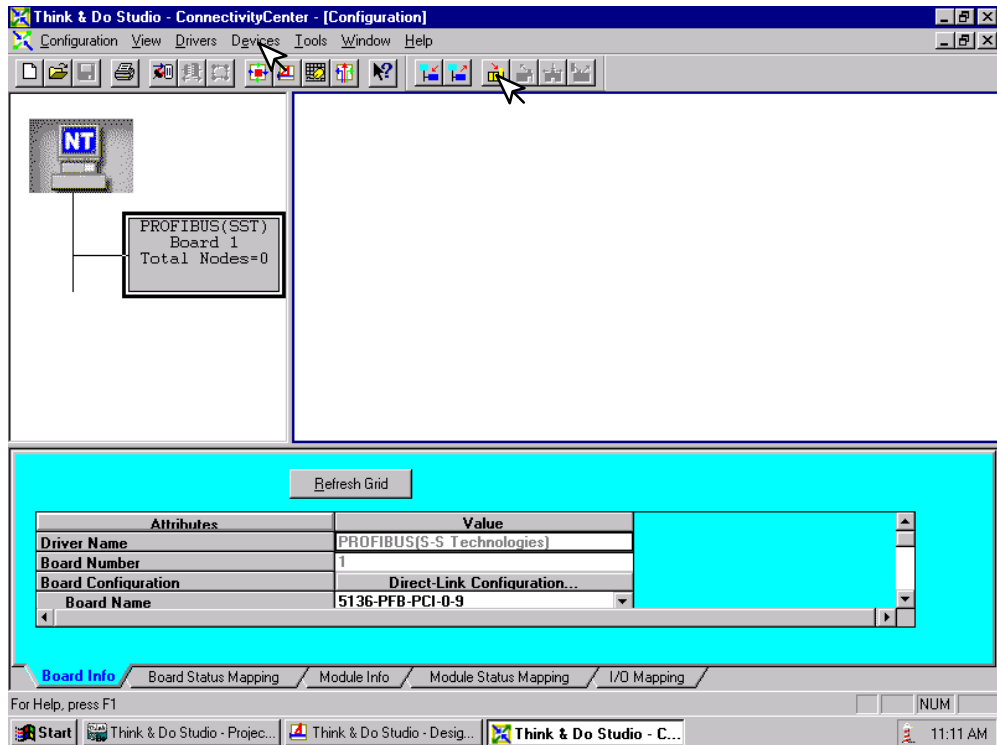
4. Click on the down arrow and select the Profibus driver that is installed in your PC.
5. Click **OK**.

This installs the SST driver to Think & Do configuration.



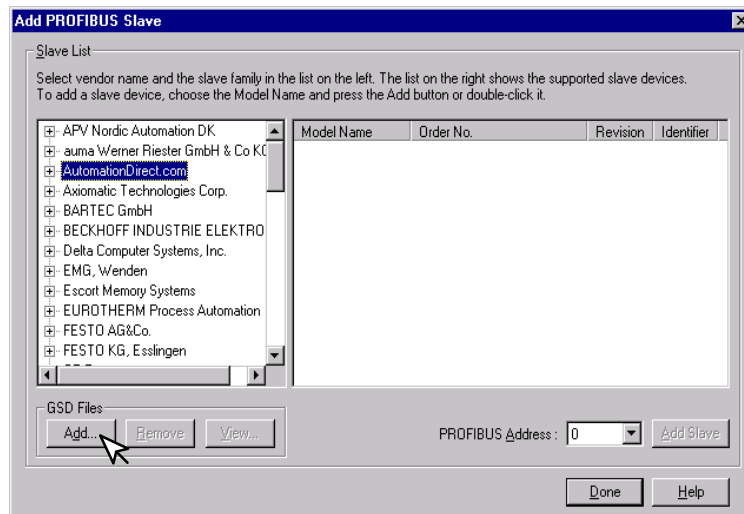
The H0-PSCM Slave must be added to the configuration next.

6. Click on **Devices** or the **Add Device** button in this window.



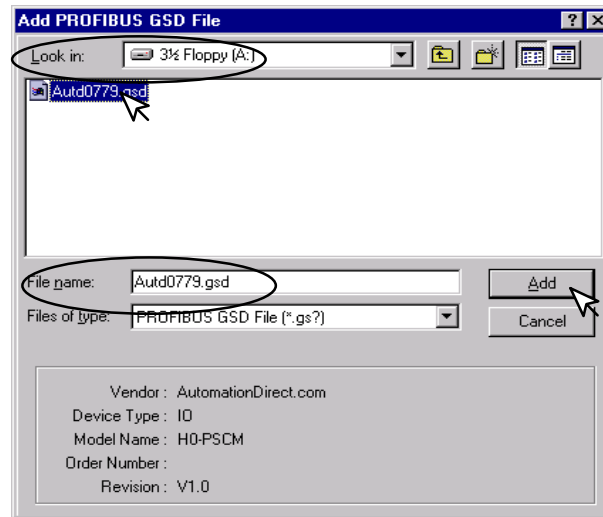
The following window will come into view. You will see a list of companies in the window on the left. Each of these have GSD files that are supported by Think & Do. If AutomationDirect is not in the list, you will need to install the GSD file from the diskette that was supplied with this manual.

7. Click the **Add** button.



When this window comes into view, insert the diskette and select the A: drive in the **Look in:** window slot.

7. Click on **Auto0779.gsd** file to select the **File name**, then **Add**.

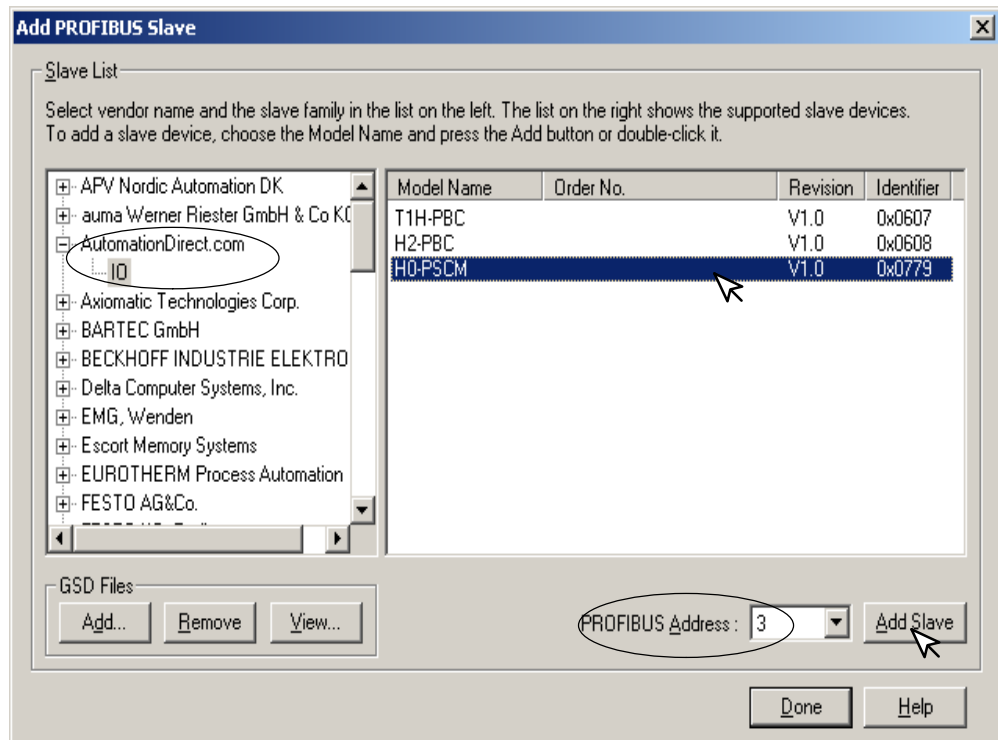


The window appears like the one shown below.

8. Click on **AutomationDirect.com**, then **IO**. This puts the available GSD file names in the window on the right.

9. Select H0-PSCM and enter the **PROFIBUS Address** set on the rotary switches.

10. Click on **Add Slave**, then **Done**.





Note: Once the GSD file has been added, simply click the Connect button after installing the Profibus I/O driver the next time that a slave is configured. Think & Do Studio will search the network for all connected slaves and the modules for each slave. You will need to select the name for each module found.

The window now displays the **H0-PSCM** as a block with the name and address.

Now that the H0-PSCM Slave has been added to the configuration, add the read and write information.

11. Either click on **Devices** or on the **Add Device** button.

Attributes

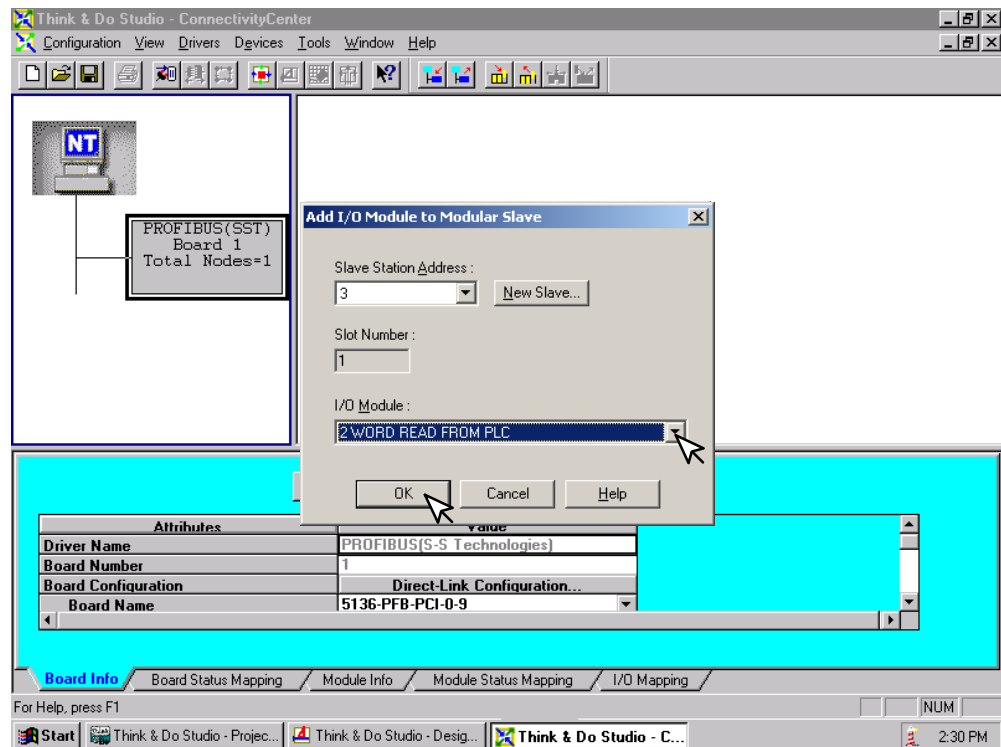
Attributes	Value
PROFIBUS Address	0
Model Name	H0-PSCM
Order Number	
Description	Station000

Board Info Board Status Mapping **Module Info** Module Status Mapping I/O Mapping

For Help, press F1

The **Add I/O Module to Modular Slave** window will drop down. Select the module for Slot 1 by clicking on the down arrow next to the **I/O Module**.

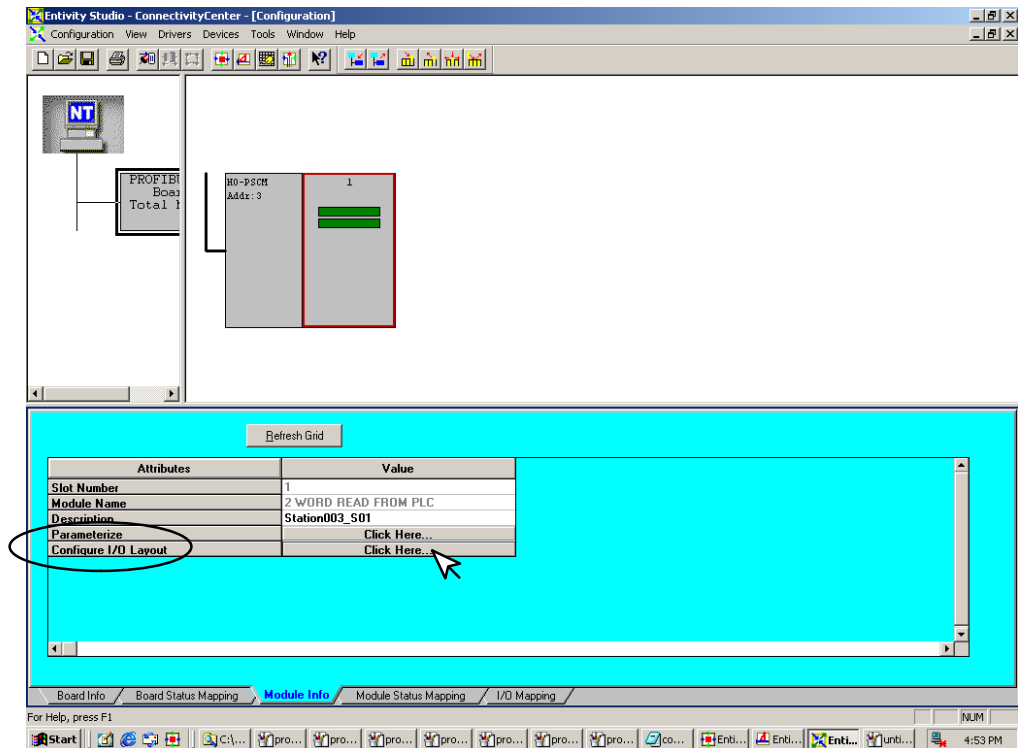
12. Select **2 WORD READ FROM PLC**. Click the **OK** button.



Repeat these steps for each slot with an input module installed.

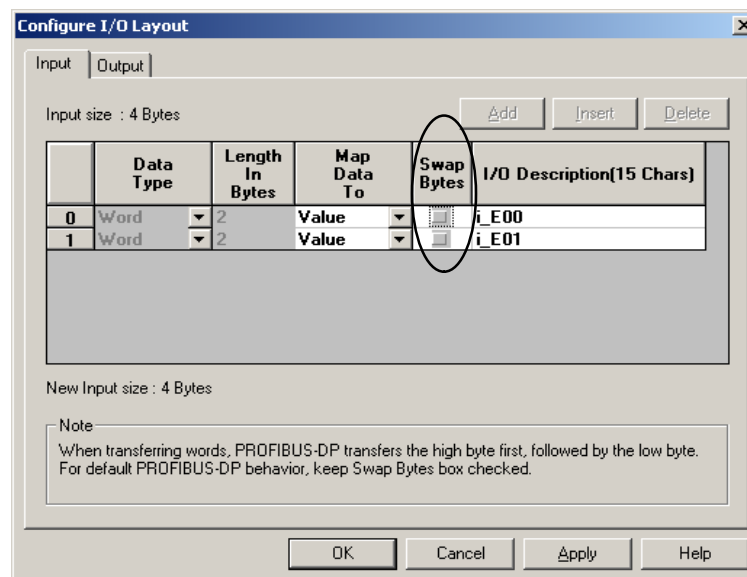
The configuration window now shows the H0-PSCM Slave Communications Module with the added input module. The next step is to configure the module.

13. Click on **Configure I/O Layout**.



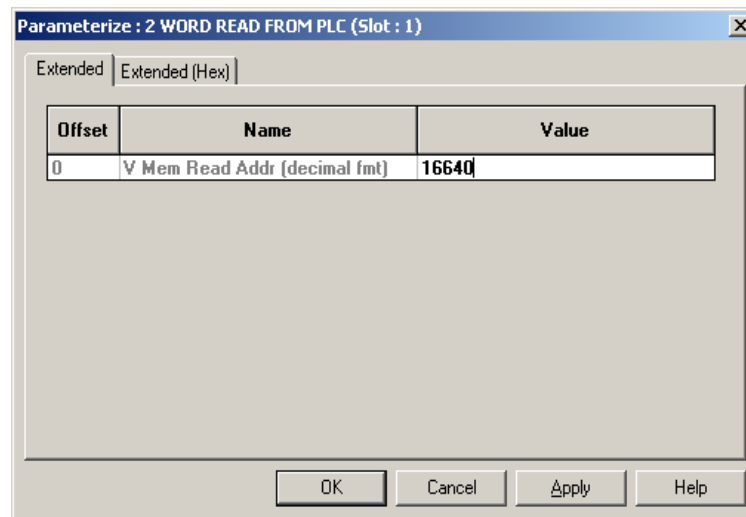
The **Configure I/O Layout** window will appear.

14. Deselect **Swap Bytes**, then click on **Apply** and **OK**.



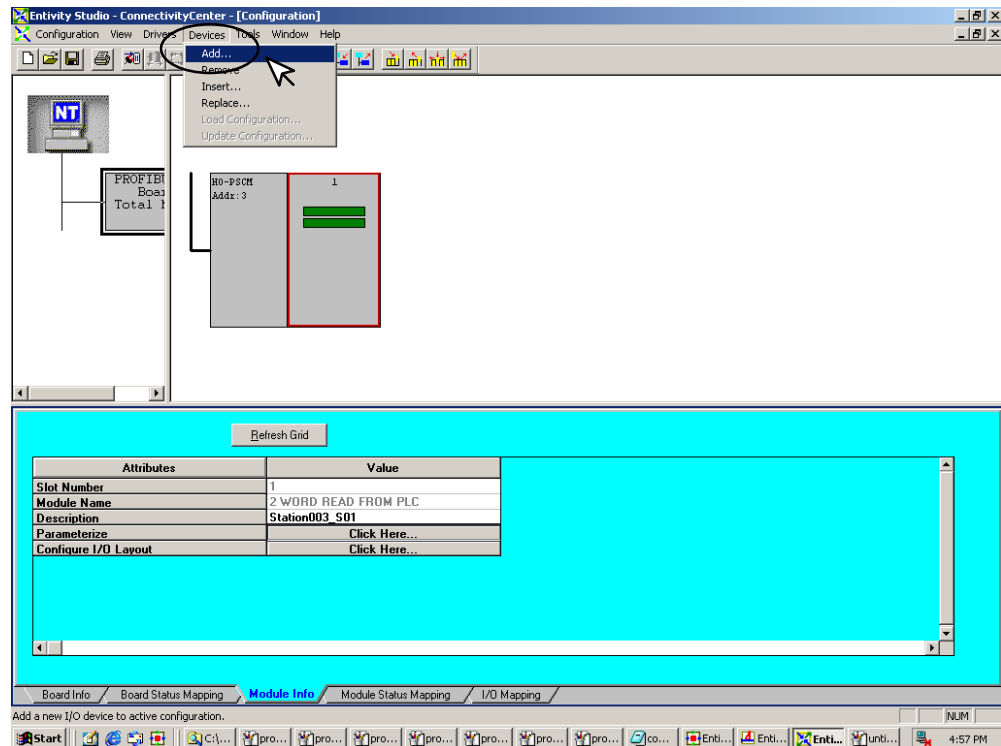
Click on **Parameterize** in the Configuration window. The Parameterize window will appear with a default value of 1024.

15. Change 1024 to **16640** (40400 octal). Click on **Apply** then **OK**.

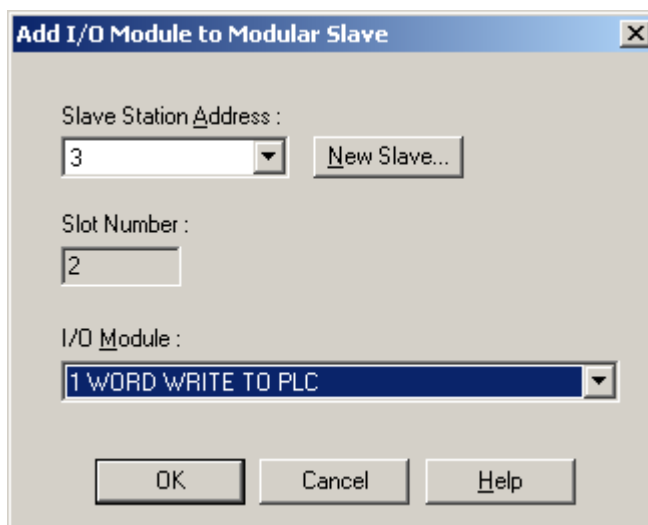


Add the output module(s) in the **Configuration** window next.

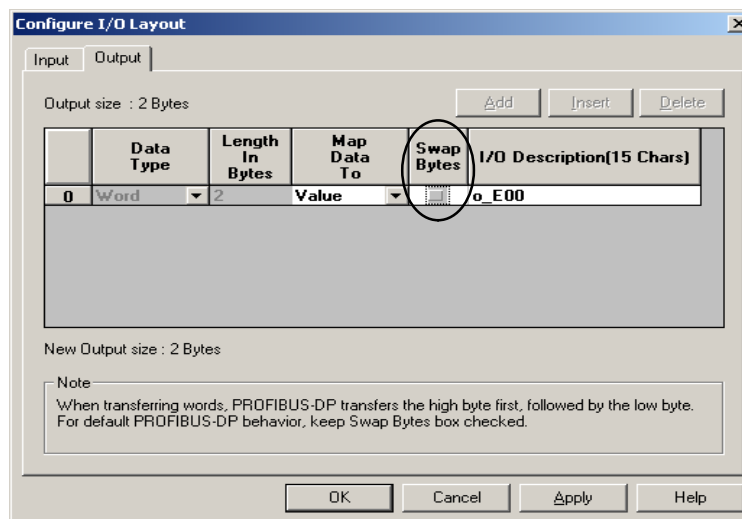
16. Click on **Devices > Add**.



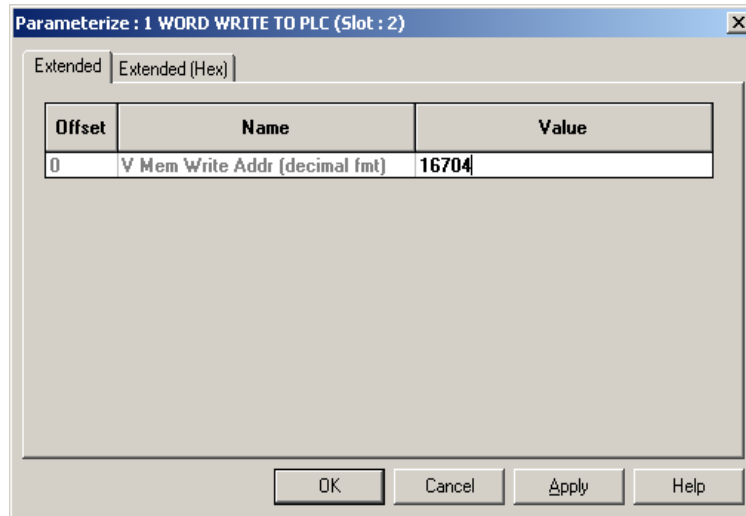
17. Select **1 WORD WRITE TO PLC** in the window that appears, then click **OK**.



18. Now click on **Configure I/O Layout** and deselect **Swap Bytes**. Click **Apply** then **OK**.



19. Click on **Parameterize** in the **Configuration** window.
- The Parameterize window will appear with a default value of 1024.
20. Change 1024 to **16704** (40500 octal). Click on **Apply** then **OK**.



- The H0–PSCM Slave Communications Module can now be put on line.
21. Either click on **Configuration > Connect** or on the **Connect** button.
 22. After it is connected, either click on **Configuration > Scan** or on the **Scan** button.
- The system should now be running.

