

Siemens Profibus Network Set up with H0–PSCM

In This Appendix. . . .

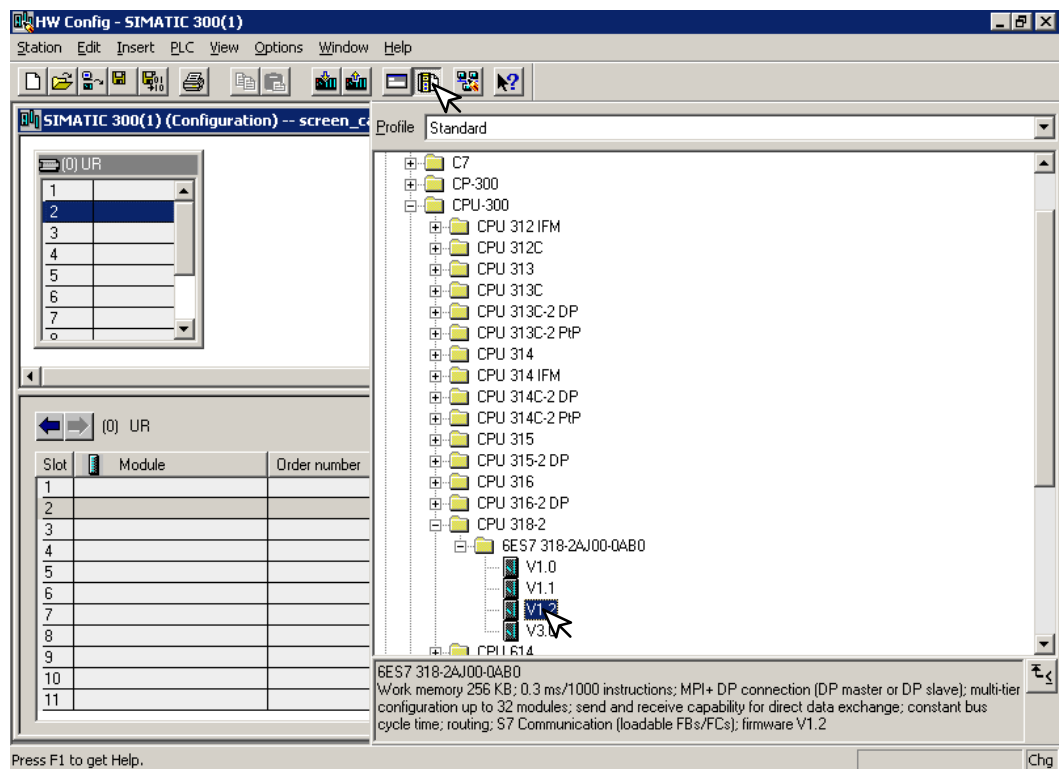
— Siemens Profibus Network Setup with a H0–PSCM

Setup a H0-PSCM on Siemens Profibus Network

For those who are using the H0-PSCM slave on a Profibus network with a Siemens PLC, the examples on the following pages will step you through the process of setting up your network. The PLC used as the Profibus master in this example is a Simatic 300.

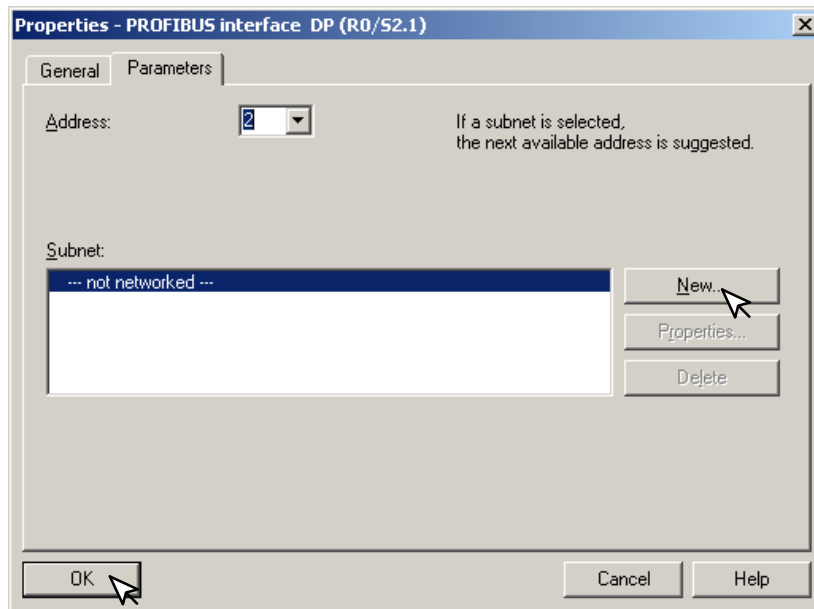
Simatic Manager Begin by opening your SIMATIC Manager to configure the Profibus driver.

1. Use the hardware configuration to select the PLC processor.
2. Open the catalog window by clicking on the **Catalog** button, and select the proper S7 processor.



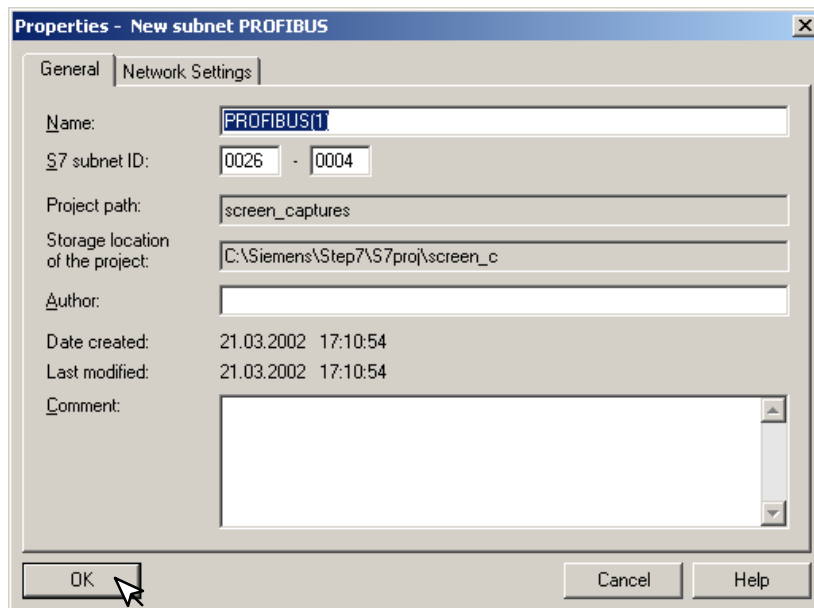
After selecting the processor, the DP interface properties window will pop-up.

3. Select **N**ew, and **O**K.

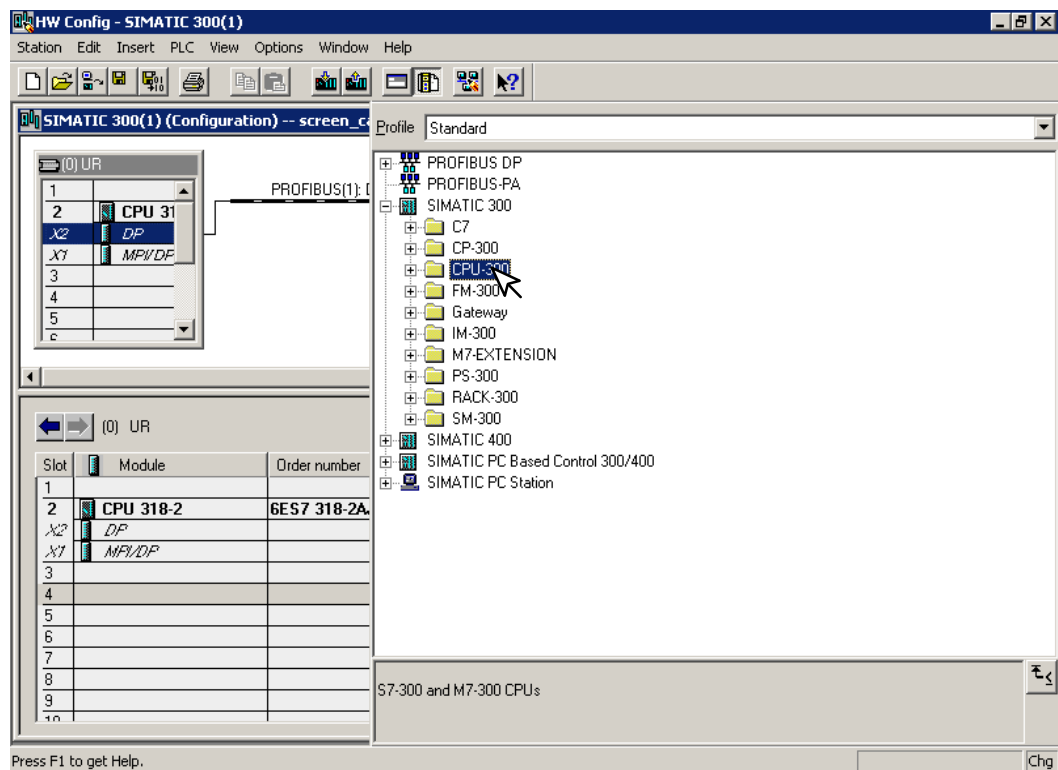


The new subnet window will appear allowing you to name the subnet. The new ID is also in the window.

4. Make the necessary entries, then click **O**K.

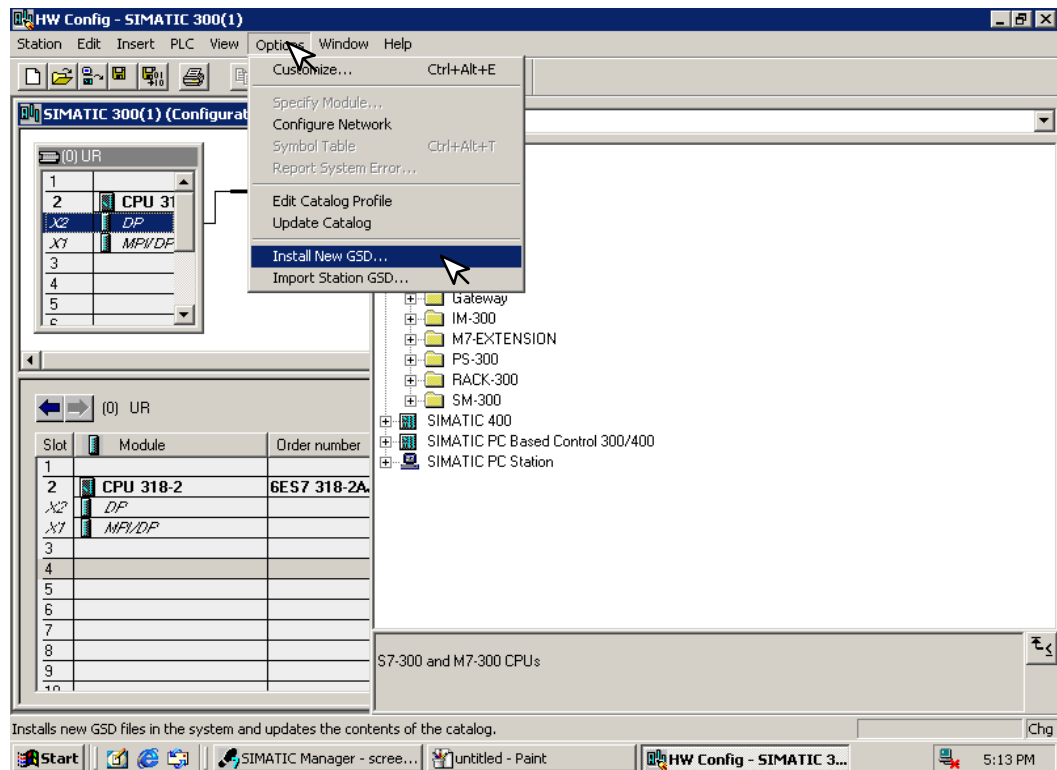


Once the processor has been selected and the DP network is enabled, the configuration window should look like the diagram below.

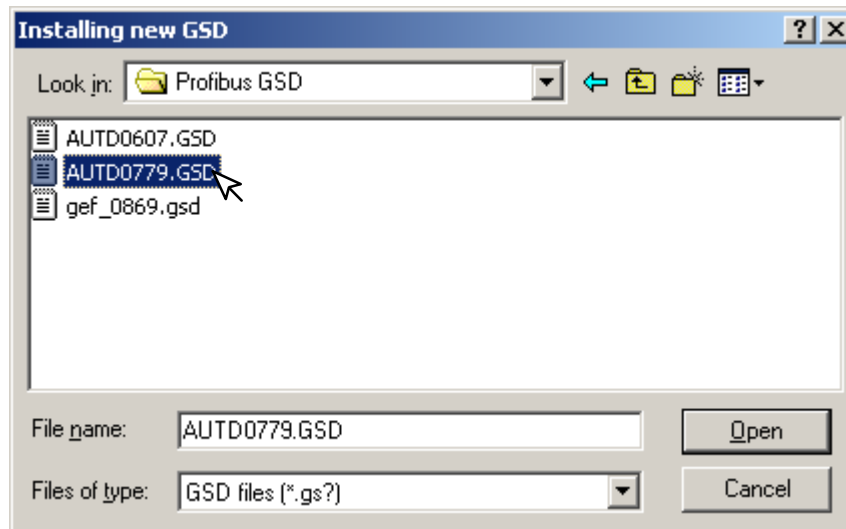


The GSD file will need to be installed now.

- Click on **Options** and select **Install New GSD...** in the drop-down window.

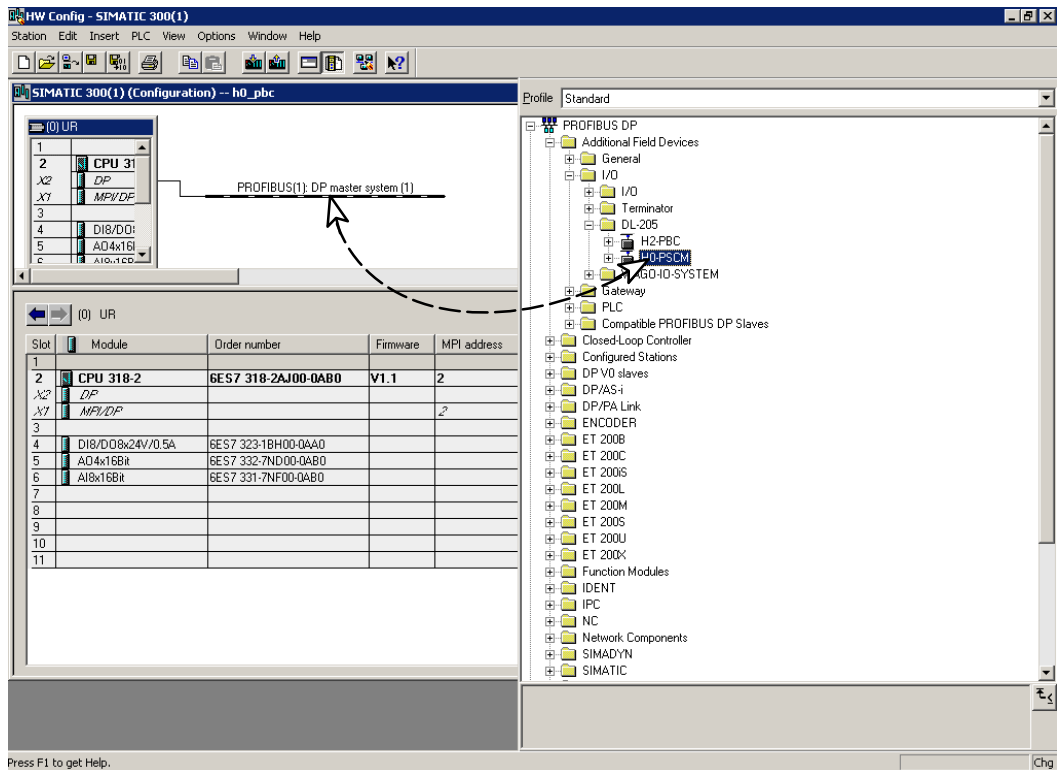


After installing the GSD file, the drop-down window will show the name of the newly installed file.

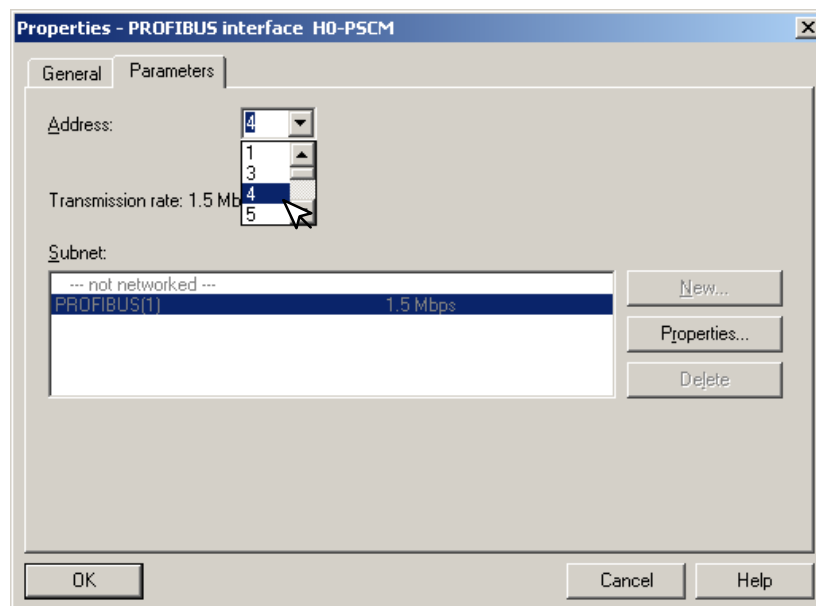


The Configuration window will look like the one below.

6. Now, click on the **H0-PSCM** and drag it to the Profibus network.

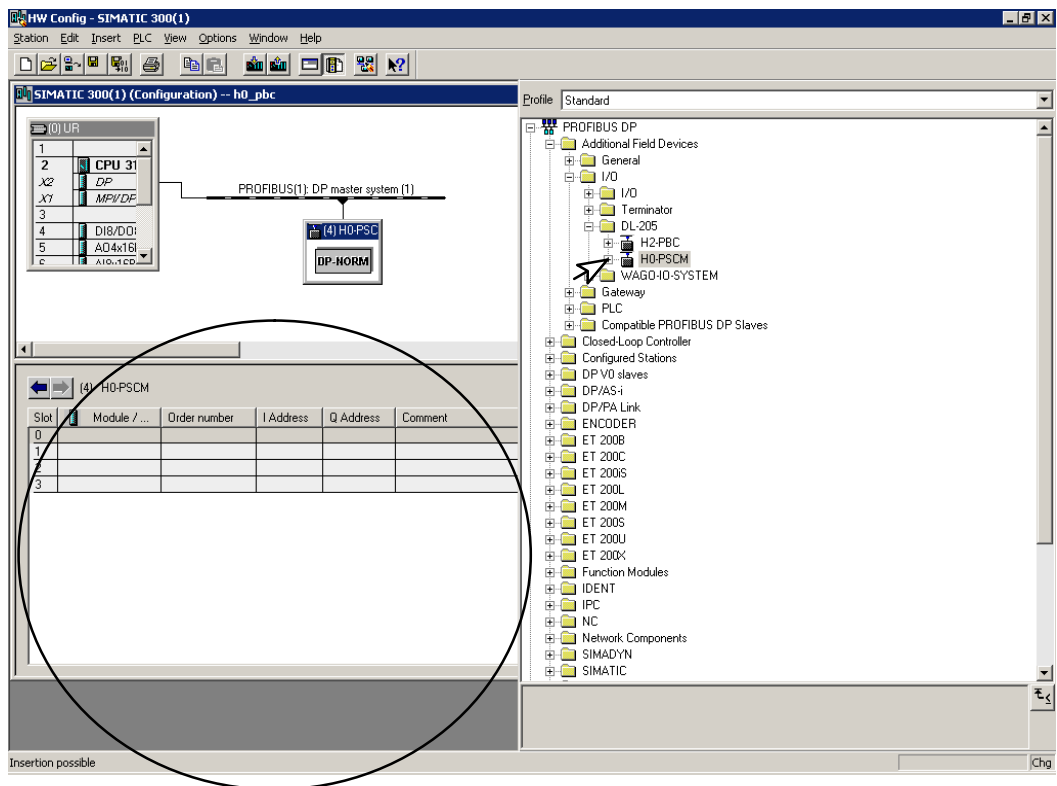


When the mouse button is released at the network node, the **Properties** window will appear so the correct node address can be entered. The transmission baud rate can be changed at this time also. Click **OK** when finished.



Now that the H0-PSCM is a node on the Profibus network, the WORD READ/WRITE information needs to be added to the Slave Communications Module.

- Open the H0-PSCM READ/WRITE configuration window by clicking on **H0-PSCM** at the node.



Open the H0-PSCM configuration READ/WRITE list by clicking on the + **H0-PSCM**. Make your selections to configure the Profibus Slave Communications Module.

8. Either click on the selection that you want and drag it to the configuration table to the left or double click on the selection and it will automatically be added to the configuration list.

The screenshot shows the SIMATIC Manager HW Config interface. The main window displays a rack configuration with a CPU 31 and DP-MOD modules. A Profibus DP master system is connected to the DP-MOD. The H0-PSCM configuration table is shown below, with a dashed arrow pointing from the 'WORD WRITE TO PLC' option in the right-hand list to the table.

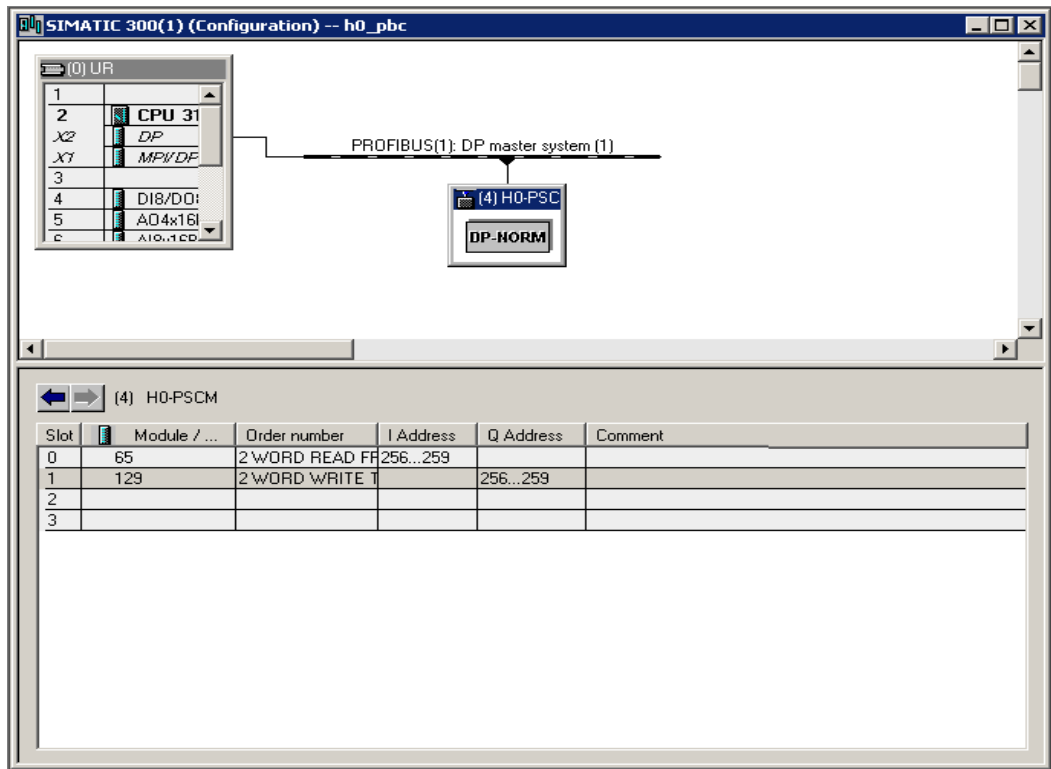
Slot	Module / ...	Order number	I Address	Q Address	Comment
0	65	2	WORD READ	FF256..259	
1					
2					
3					

The right-hand list shows the H0-PSCM configuration options:

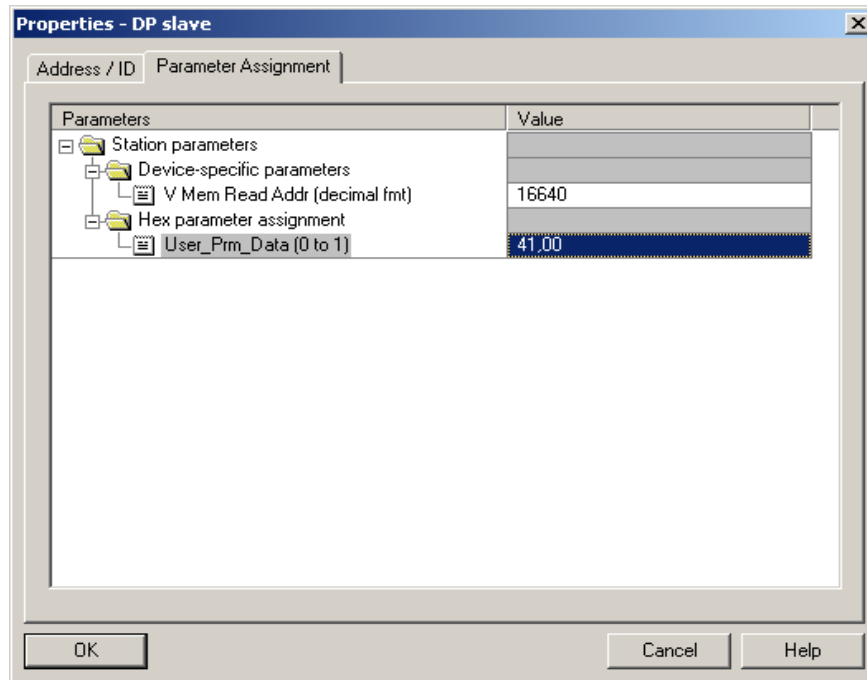
- Universal module
- Empty Slot
- 1 WORD READ FROM PLC
- 2 WORD READ FROM PLC
- 3 WORD READ FROM PLC
- 4 WORD READ FROM PLC
- 5 WORD READ FROM PLC
- 6 WORD READ FROM PLC
- 7 WORD READ FROM PLC
- 8 WORD READ FROM PLC
- 9 WORD READ FROM PLC
- 10 WORD READ FROM PLC
- 11 WORD READ FROM PLC
- 12 WORD READ FROM PLC
- 13 WORD READ FROM PLC
- 14 WORD READ FROM PLC
- 15 WORD READ FROM PLC
- 16 WORD READ FROM PLC
- 18 WORD READ FROM PLC
- 20 WORD READ FROM PLC
- 24 WORD READ FROM PLC
- 30 WORD READ FROM PLC
- 32 WORD READ FROM PLC
- 1 WORD WRITE TO PLC
- 2 WORD WRITE TO PLC
- 4 WORD WRITE TO PLC
- 5 WORD WRITE TO PLC
- 6 WORD WRITE TO PLC
- 7 WORD WRITE TO PLC
- 8 WORD WRITE TO PLC
- 9 WORD WRITE TO PLC
- 10 WORD WRITE TO PLC

After you have finished configuring the H0-PSCM DP Slave, the configuration window will look like the example below.

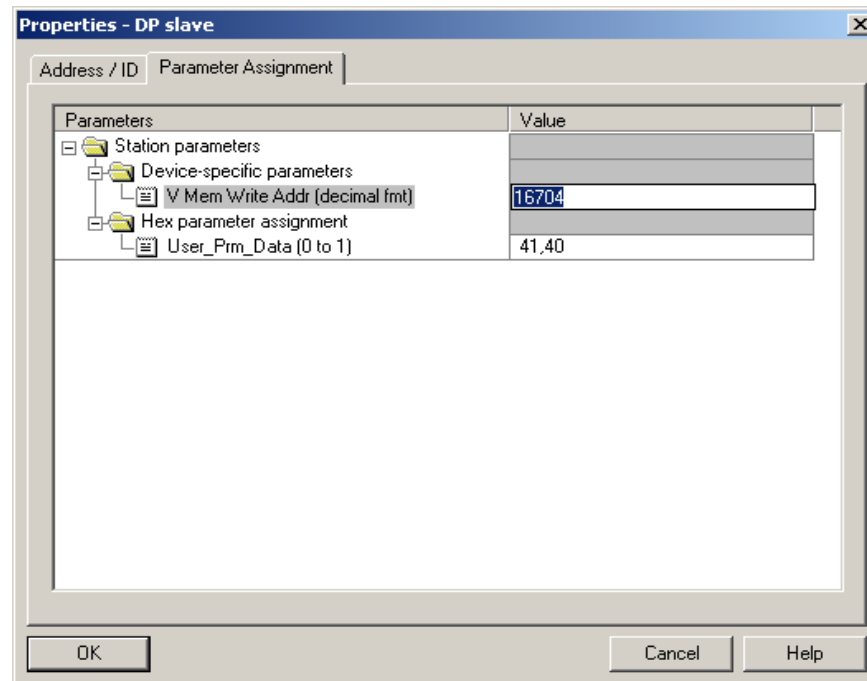
- Next, right click on the READ and the WRITE selections, then select **Properties** to assign V Memory addresses.



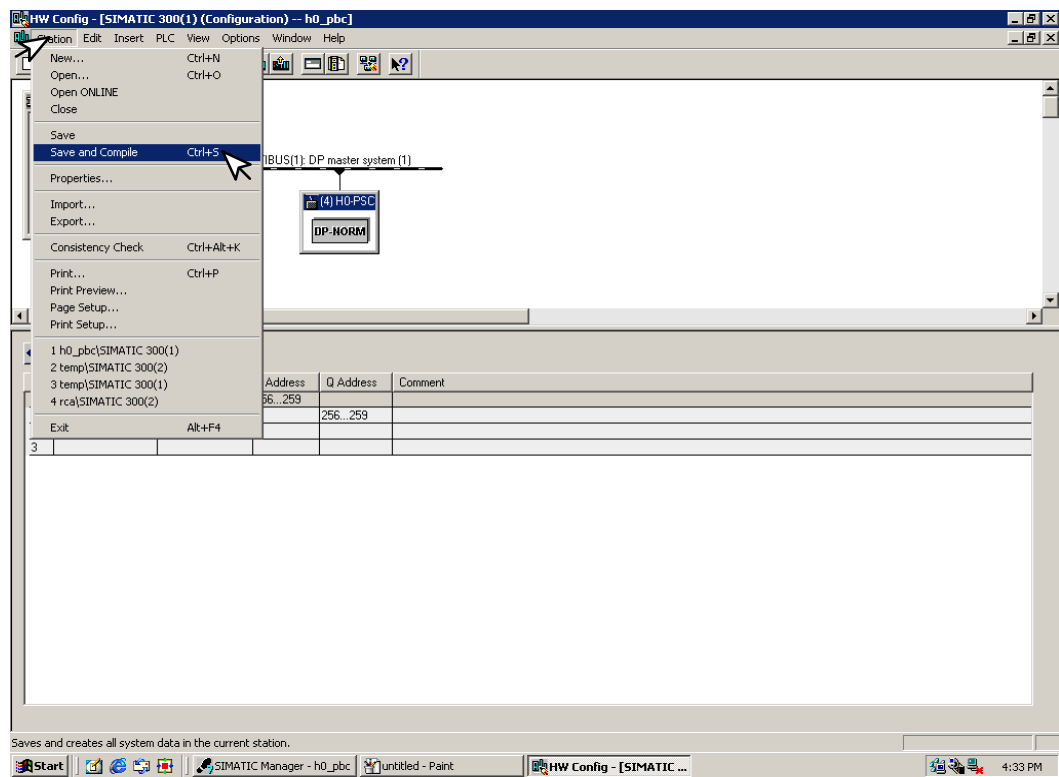
10. Select **Parameter Assignment** to enter the READ address. Enter either the decimal value of 16640 or 4100 hex, this is V40400.



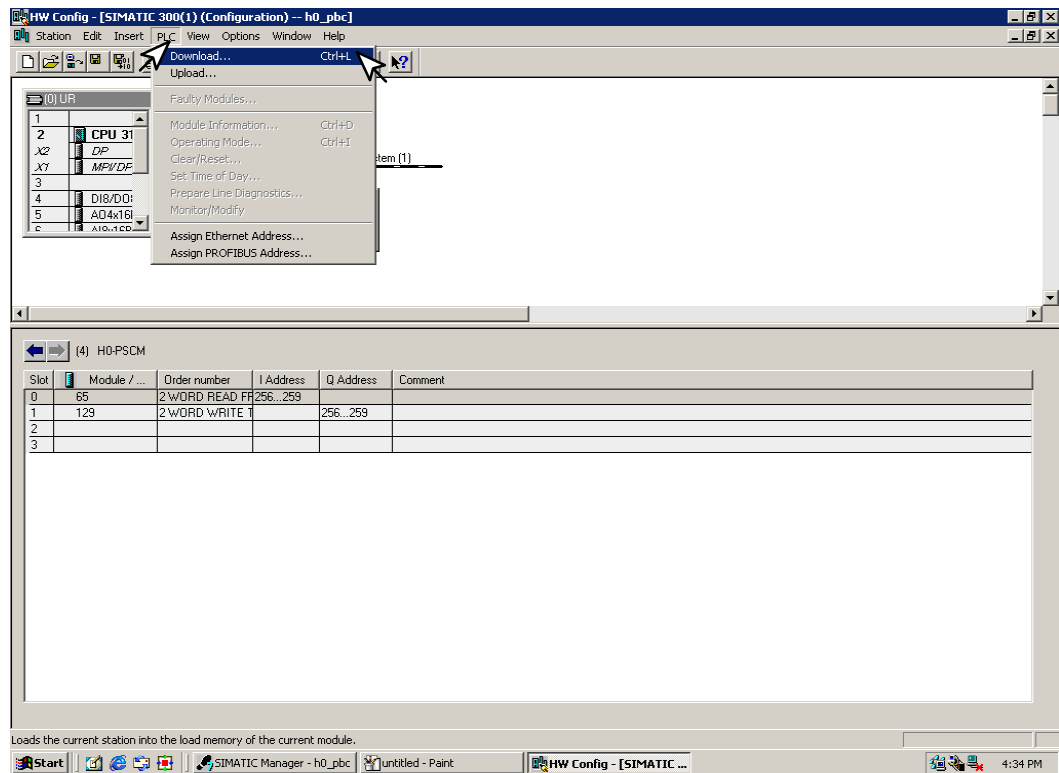
11. Enter the **Parameter Assignment** for WRITE address to either the decimal value of 16704 or 4140 hex, this is V40500.



12. Now, click on **Station**, then click on **Save and Compile** to update your project.
This will save the project for downloading to the PLC.



13. Select **PLC** and **Download...** the hardware setup that was saved.



Your system should now be running.