

# OP-1124

## Pushbutton Panel

---

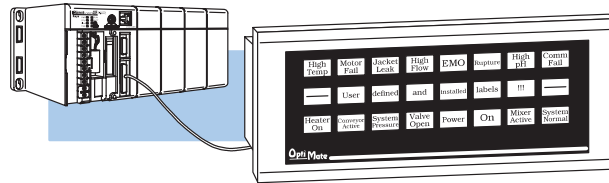
### In This Manual. . . .

- Getting Started
  - Preparing the Lamp Labels
  - Installing the Panel
  - Configuring the Panel
  - Applying Ladder Logic
-

# Getting Started

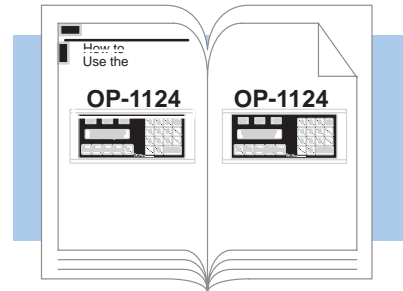
## The Purpose of this Manual

This manual shows you how to install and operate your OP-1124 Lamp Annunciator Panel. It includes wiring diagrams and power requirements, as well as the information you need for selecting the proper connecting cables.



## Contents of the Manual

In this manual you will learn how to use the OPEditor configuration software (purchased separately) to configure your panel. And in the back of this manual, we will show you some simple ladder logic that demonstrates the versatility of the panel, both for *PLCDirect*<sup>™</sup> and Allen-Bradley products.



**Additional Manuals** There are several other manuals you will find helpful or necessary:

- **DirectSOFT**<sup>™</sup> User Manual—Shows you how to use the **DirectSOFT** Windows software to write your ladder logic for **PLCDirect** programmable controllers.
- Respective PLC User Manuals—Shows you the memory conventions, programming instruction sets, data or file types, communications protocol, etc.
- OP-9001-M Communications Master User Manual provides details of how to use the OP-9001 for connecting multiple OP-Panels to a single CPU.

## Technical Assistance

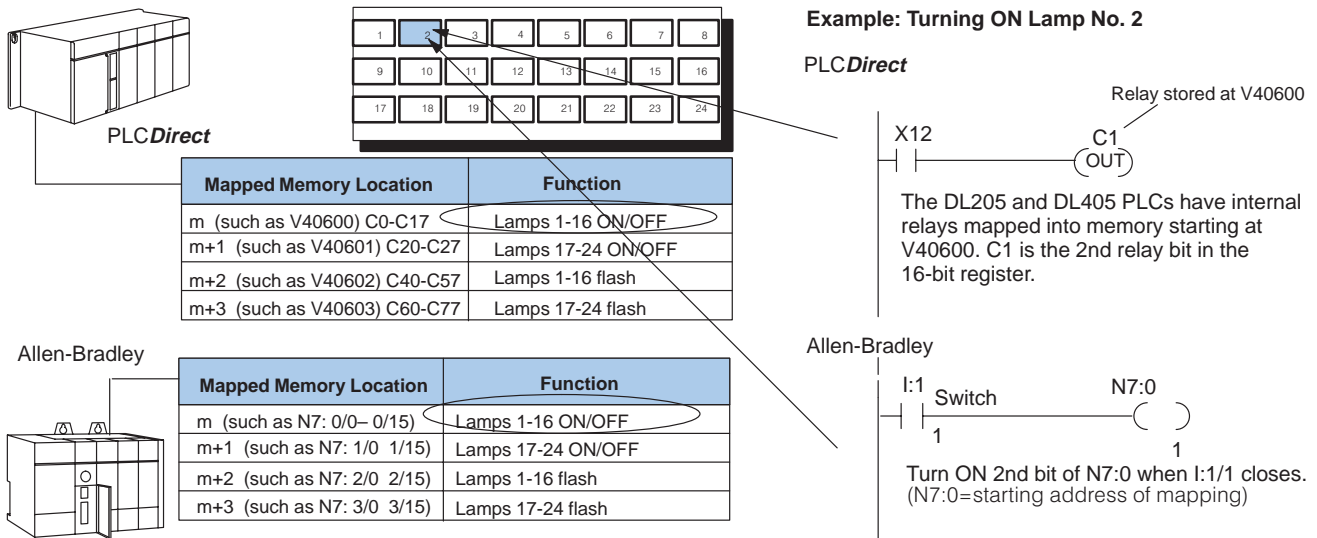
After completely reading this manual, if you are not successful with implementing the OP-1500 or OP-1510, you may call **PLCDirect** at (800) 633-0405, Monday through Friday from 9:00 A.M. to 6:00 P.M. Eastern Standard Time. Our technical support group will work with you in answering your application questions. If you have a comment or question about our products, services, or manuals which we provide, please fill out and return the suggestions card included with this manual.

**How the OP-1124 Works**

The purpose of the panel is to have individual lamps turn ON or OFF in response to specific actions that take place within your PLC ladder logic. To accomplish this, the OP-1124 uses a process called “memory mapping”. This process ties the panel lamps to specific reserved areas of memory in the PLC.

Using our OPEditor configuration software, you determine which PLC location to use. Each one of the lamps is controlled by the status of its assigned bit within the memory words that you have reserved.

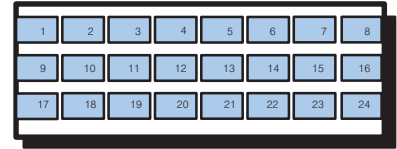
You can also make any or all of the lamps flash. If you choose the flashing option, the software will automatically reserve additional consecutive words of memory. We’ll show more details in the final section of this manual. Below is a quick example for turning ON an individual lamp, without using the flash option.



## Using the Lamp Annunciator Panel...5 Easy Steps

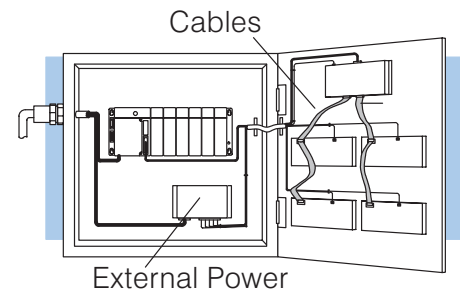
### Step 1: Prepare Your Lamp Labels and Exchange LEDs (Pages 5–6)

First, you need to prepare the labels for each of the lamps. The labels insert into plastic sleeves behind the main cover. The units are shipped with all red LEDs. You can access these by removing the label frame from the housing. The frame is held to the panel with double-sided tape strips. You can purchase yellow and green LEDs separately and replace any of the red ones. You will probably want to exchange any LEDs at the same time you insert the label text.



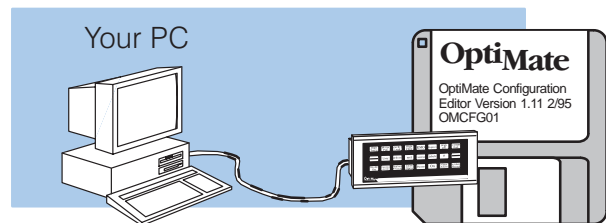
### Step 2: Install the Panel (Pages 7–14)

Preparing for installation, you will want to check the individual specifications. These include dimensions, power requirements, cabling requirements, NEMA ratings. We include information you will need for mounting; i.e. cutout dimensions, cabling requirements, components needed, etc.



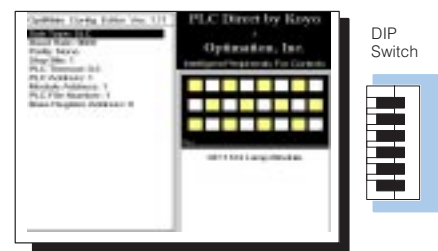
### Step 3: Load the OPEditor Software (Page 15)

You need the OptiMate™ OPEditor software in order to configure your panel. At the time of publication, we have a DOS version with the introduction of a Windows version due in early 1996. This software is the same regardless of whether you are connecting to PLC*Direct* or Allen-Bradley product.



### Step 4: Configure the Panel to Work with your CPU (Pages 16–19)

After setting a DIP switch on the rear of the panel and attaching the programming cable, you are ready to configure your panel. The simple and easy-to-follow screens make configuration a painless process.



### Step 5: Write the Ladder Logic (Pages 20–33)

The amount of ladder logic programming knowledge you need is very basic. In most cases, you are already familiar with the elements of logic that are required. We'll give you examples in the final section of this manual, and you will see right away just how easy it is.

