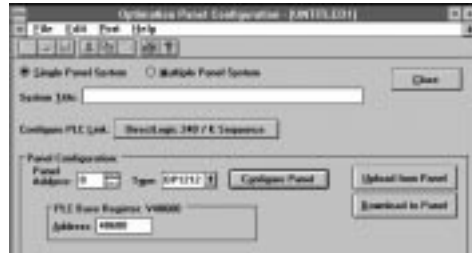


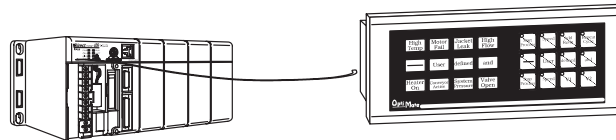
Panel to PLC Communications

I have configured the panel and connected it to my PLC. All of the lights are flashing and nothing seems to work. What do I do?

- Observe the TX and RX LEDs on the rear of the panel. If the TX LED flashes but the RX does not, check all cables and connections and try again.
- Examine the configuration and verify the Link and Comm. information match the PLC type and family that you are using (i.e. baud rate, parity, stop bit, address).



- If you are using the secondary comm port on a PLC*Direct* PLC and both TX and RX LEDs are flashing verify the mode of that port is set to HEX and not ASCII.
- If you are using an Allen-Bradley PLC, verify that the baud rate for channel 0 is set to 4800 or 9600 and the memory map has been expanded to include the full range of registers (i.e., N7:0 through N7:7).



Panel Operation

When I press a pushbutton nothing happens.

- Verify that the control relays that you are using in your ladder logic match the ones associated with the memory location that you mapped to the panel.

PLC*Direct*

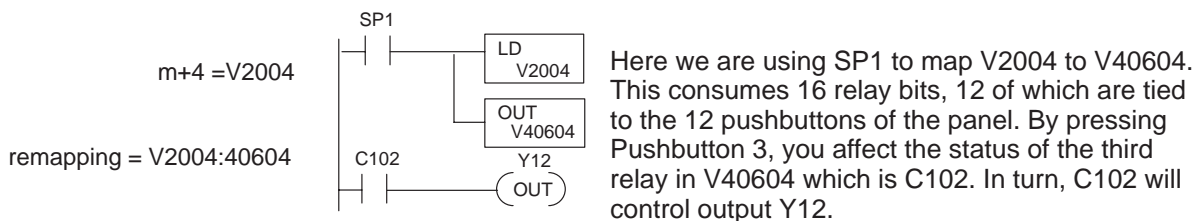
Mapped Memory Location	Function
m (such as V40600) C0-C17	Indicator Lamps ON/OFF
m+1 (such as V40601) C20-C37	Indicator Lamps Flash Control
m+2 (such as V40602) C40-C57	Button LEDs ON/OFF
m+3 (such as V40603) C60-C77	Button LEDs Flash Control
m+4 (such as V40604) C100-C117	Button ON/OFF Status
m+5 (such as V40605) C120-C137	Force Pushbuttons Data & Comnd

Mapping Assignments

Allen-Bradley

Mapped Memory Location	Function
m (such as N7: 0/0-0/15)	Indicator Lamps ON/OFF
m+1 (such as N7: 1/0-1/15)	Indicator Lamps Flash Control
m+2 (such as N7: 2/0-2/15)	Button LEDs ON/OFF
m+3 (such as N7: 3/0-3/15)	Button LEDs Flash Control
m+4 (such as N7: 4/0-4/15)	Button ON/OFF Status
m+5 (such as N7: 5/0-5/15)	Force Pushbuttons Data & Comnd

- If you are remapping, make sure that you are remapping in the proper direction and that you are using a contact that is always ON as the input to the remapping logic. Remapping must be performed every scan to function properly.

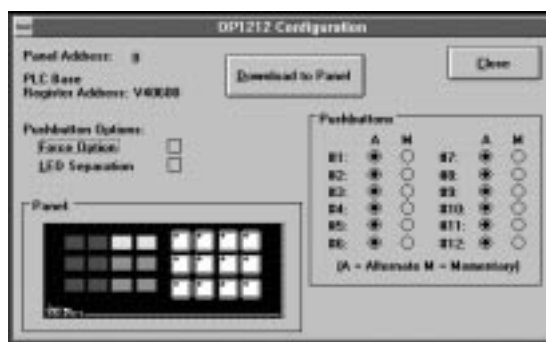


When I activate a bit to light a pushbutton LED, it does not light.

- Verify that you are using the correct address. The base address you chose during panel configuration determines the proper addresses to use.
- If you are remapping, make sure that you are remapping in the proper direction and that you are using a contact that is always ON as the input to the remapping logic. Remapping must be performed every scan to function properly.
- Verify that **LED Separation Mode** was **enabled** during panel configuration.

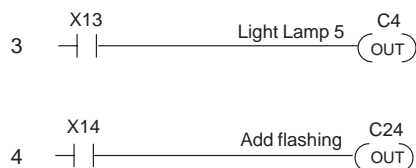
When I press a pushbutton the associated LED does not turn ON.

- If the LED Separation Mode was enabled, the LED will work independently of the pushbutton. In this case the LED will be turned ON by the ladder logic program.
- The pushbutton may be configured as momentary. In this case the LED will be ON only as long as the pushbutton is being pressed.



I can not make the lamp flash. What could I be doing wrong?

- Remember that to flash a lamp, it must be turned ON first. Verify that you are turning the Lamp ON before you activated the flashing option.



Rungs 3 and 4 –Flashing Lamps

To flash a Lamp, it must be first turned ON. When contact X13 is activated Lamp 5 will turn ON and when contact X14 is activated the Lamp will flash.