

# MAINTENANCE AND TROUBLESHOOTING

---



## In This Chapter...

Hardware Maintenance .....	6-2
Diagnostics .....	6-3
CPU Indicators .....	6-4
PWR Indicator .....	6-5
RUN Indicator .....	6-7
CPU Indicator .....	6-7
Communications Problems .....	6-7
I/O Module Troubleshooting .....	6-8
Noise Troubleshooting .....	6-10
Run Time vs. Stop Mode Transfer Instruction .....	6-11
Forcing I/O Points .....	6-14

## Hardware Maintenance

### Standard Maintenance

The Productivity3000 is a low maintenance system requiring only a few periodic checks to help reduce the risks of problems. Routine maintenance checks should be made regarding two key items.

- Air quality (cabinet temperature, airflow, etc.)
- CPU battery

### Air Quality Maintenance

The quality of the air your system is exposed to can affect system performance. If you have placed your system in an enclosure, check to see that the ambient temperature is not exceeding the operating specifications. If there are filters in the enclosure, clean or replace them as necessary to ensure adequate airflow. A good rule of thumb is to check your system environment every one to two months. Make sure the Productivity3000 is operating within the system operating specifications.

### CPU Battery Replacement

A battery is included with the P3-550 CPU, but is not installed. The battery can be installed to retain the Time and Date along with any Tagname values that are set up as retentive.

The battery is not needed for program backup.

Battery (Optional)	
D2-BAT-1	Coin type, 3.0V Lithium battery, 560mA, battery number CR2354

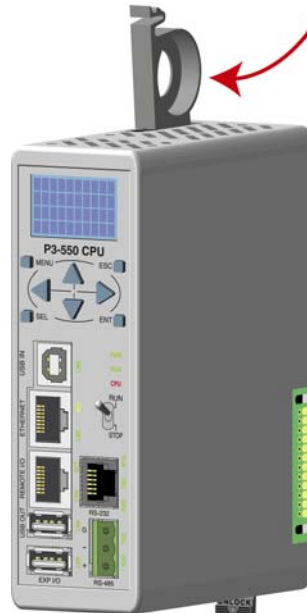
#### Step One:

Press spring lock and swing battery compartment away from CPU.



#### Step Two

Insert battery and close compartment.



## Diagnostics

### Diagnostics

Your Productivity3000 system performs many pre-defined diagnostic routines with every CPU scan. The diagnostics have been designed to detect various types of failures for the CPU and I/O modules. There are two primary error classes, critical and non-critical.

### Critical Errors

Critical errors are errors the CPU has detected that offer a risk of the system not functioning safely or properly. If the CPU is in Run Mode when the critical error occurs, the CPU will switch to Stop Mode. (Remember, in Stop Mode all outputs are turned off.) If the critical error is detected while the CPU is in Stop Mode, the CPU will not enter Run Mode until the error has been corrected. Here are some examples of critical errors.

- Base power supply failure
- Parity error or CPU malfunction
- I/O configuration errors
- Certain programming errors

### Non-Critical Errors

Non-critical errors are errors that are flagged by the CPU as requiring attention. They can neither cause the CPU to change from Run Mode to Stop Mode, nor do they prevent the CPU from entering Run Mode. There are system tags the application program can use to detect if a non-critical error has occurred. The application program can be used to take the system to an orderly shutdown or to switch the CPU to Stop Mode if necessary.

Some examples of non-fatal errors are:

- Backup battery voltage low
- All I/O module errors
- Certain programming errors

### Finding Diagnostic Information

The CPU automatically logs critical and non-critical error codes. This information can be found in the following places marked with a time and date stamp.

- The LCD on the CPU module by scrolling through the menu.
- The PAC Error History window under the Monitor Debug tool of ProductivitySuite lists the 20 most recent critical and non-critical errors.

Appendix B in this manual has a complete list of error messages sorted by error types.

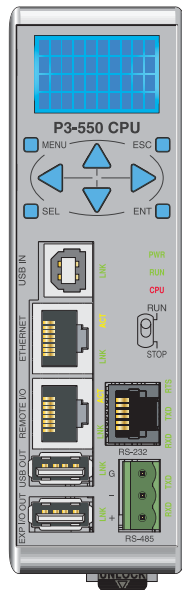
### Error Codes

See Appendix B for Productivity3000 Error Codes.

## CPU Indicators

The Productivity3000 CPU has indicators on the front to help you diagnose problems with the system. The table below gives a quick reference of potential problems associated with each status indicator. Following the table will be a detailed analysis of each of these indicator problems.

Indicator Status	Potential Problems
PWR (off)	1. System voltage incorrect 2. Power supply/CPU is faulty 3. Other component such as an I/O module has power supply shorted
RUN (will not come on)	1. CPU programming error 2. Switch in STOP position
CPU (blink)	CPU internal error



CPU Status Indicators	
PWR	Green LED is illuminated when power is on
RUN	Green LED is illuminated when CPU is in RUN mode
CPU	Red LED is illuminated during power on reset, power down, or watch-dog time-out.

## PWR Indicator

There are three general reasons for the CPU power status LED (PWR) to be OFF:

1. Power to the base is incorrect or is not applied.
2. Base power supply is faulty.
3. Other component(s) have the power supply shut down.

### Incorrect Base Power

If the voltage to the power supply is not correct, the CPU and/or base may not operate properly or may not operate at all. Use the following guidelines to correct the problem.



**WARNING: To minimize the risk of electrical shock, always disconnect the system power before inspecting the physical wiring.**

1. First, disconnect the system power and check all incoming wiring for loose connections.
2. If you are using a separate termination panel, check those connections to make sure the wiring is connected to the proper location.
3. If the connections are acceptable, reconnect the system power and measure the voltage at the base terminal strip to insure it is within specification. If the voltage is not correct shut down the system and correct the problem.
4. If all wiring is connected correctly and the incoming power is within the specifications required, the base power supply should be returned for repair.

### Faulty CPU

There is not a good check to test for a faulty CPU other than substituting a known good one to see if this corrects the problem. If you have experienced major power surges, it is possible the CPU and power supply have been damaged. If you suspect this is the cause of the power supply damage, a line conditioner which removes damaging voltage spikes should be used in the future.

### Device or Module Causing the Power Supply to Shutdown

It is possible a faulty module can shut down the power supply. This 5V can be coming from the base or from the CPU communication ports.

To test for a device causing this problem:

1. Turn off power to the CPU.
2. Disconnect all external devices (i.e., communication cables) from the CPU.
3. Reapply power to the system.

If the power supply operates normally you may have either a shorted device or a shorted cable. If the power supply does not operate normally then test for a module causing the problem by following the steps below:

If the PWR LED operates normally the problem could be in one of the modules. To isolate which module is causing the problem, disconnect the system power and remove one module at a time until the PWR LED operates normally. Follow the procedure below:

- Turn off power to the base.
- Remove a module from the base.
- Reapply power to the base.

Bent base connector pins on the module can cause this problem. Check to see the connector is not the problem.

## Run Indicator

If the CPU will not enter the Run mode (the RUN indicator is off), the problem is usually in the application program, unless the CPU has a critical error. If a critical error has occurred, the CPU LED should be on. (You can use a programming device to determine the cause of the error.)

A complete list of error codes can be found in Appendix B.

## CPU Indicator

If the CPU indicator is on, a critical error has occurred in the CPU. Generally, this is not a programming problem but an actual hardware error. The CPU indicator should blink briefly and then do an automatic reboot.

If the error clears, you should monitor the system and determine what caused the problem. You will find this problem is sometimes caused by high frequency electrical noise introduced into the CPU from an outside source. Check your system grounding and install electrical noise filters if the grounding is suspected. If power cycling the system does not reset the error, or if the problem returns, you should replace the CPU.

6

## Communications Problems

If you cannot establish communications with the CPU, check these items.

- The cable is disconnected.
- The cable has a broken wire or has been wired incorrectly.
- The cable is improperly terminated or grounded.
- The device connected is not operating at the correct baud rate.
- The device connected to the port is sending data incorrectly.
- A grounding difference exists between the two devices.
- Electrical noise is causing intermittent errors.
- The CPU has a bad communication port and the CPU should be replaced.

If an error occurs, the indicator will come on and stay on until a successful communication has been completed.

# I/O Module Troubleshooting

## Things to Check

If you suspect an I/O error, there are several things that could be causing the problem.

- A blown fuse
- A loose terminal block
- The 24 VDC supply has failed
- The module has failed
- The I/O configuration check detects a change in the I/O configuration

## Error Codes

See Appendix B for Productivity3000 error code information.

Also, in the Productivity Suite programming software, you can go to:

Tools > PAC Error History, and

Tools > PAC Event History

Next, “Read CPU Error/Event History to get an updated list of critical errors, non-critical errors and events that should indicate problems or changes to the I/O. This list will give the “GBS” (group, base, slot numbers).

## Some Quick Steps

When troubleshooting the Productivity3000 I/O modules there are a few facts you should be aware of which may assist you in quickly correcting an I/O problem:

- The output modules cannot detect shorted or open output points. If you suspect one or more points on an output module to be faulty, you should measure the voltage drop from the common to the suspect point. Remember, when using a Digital Volt Meter, leakage current from an output device, such as a triac or a transistor, must be considered. A point which is off may appear to be on if no load is connected to the point.
- The I/O point status indicators on the modules are logic side indicators. This means the LED which indicates the on or off status reflects the status of the point in respect to the CPU. On an output module, the status indicators could be operating normally, while the actual output device (transistor, triac etc.) could be damaged. With an input module, if the indicator LED is on, the input circuitry should be operating properly. To verify proper functionality, check to see that the LED goes off when the input signal is removed.
- Leakage current can be a problem when connecting field devices to I/O modules. False input signals can be generated when the leakage current of an output device is great enough to turn on the connected input device. To correct this, install a resistor in parallel with the input or output of the circuit. The value of this resistor will depend on the amount of leakage current and the voltage applied but usually a 10K to 20K resistor will work. Ensure the wattage rating of the resistor is correct for your application.
- The easiest method to determine if a module has failed is to replace it if you have a spare. However, if you suspect another device to have caused the failure in the module, that device may cause the same failure in the replacement module as well. As a point of caution, you may want to check devices or power supplies connected to the failed module before replacing it with a spare module.

### Testing Output Points

Output points can be set on or off using the force function to override a point even while the program is running. However, this is not a recommended method to test the output points. If you want to do an I/O check independent of the application program, follow this procedure:

Step	Action
1	Use ProductivitySuite programming software to communicate online to the PAC.
2	Change to Program Mode.
3	Go to the first rung of the ladder.
4	Insert a rung with an "END" statement. (This will cause program execution to occur only at address 0 and prevent the application program from turning the I/O points on or off).
5	Change to Run Mode.
6	Use the programming device to set (turn) on or off the points you wish to test.
7	When you finish testing I/O points delete the "END" statement at the first rung.



**WARNING:** Depending on your application, forcing I/O points may cause unpredictable machine operation that can result in a risk of personal injury or equipment damage. Make sure you have taken all appropriate safety precautions prior to testing any I/O points.

The LCD on Analog I/O modules displays actual voltage, current, and digital values without connecting a meter.

# Noise Troubleshooting

## Electrical Noise Problems

Noise is one of the most difficult problems to diagnose. Electrical noise can enter a system in many different ways and falls into one of two categories, conducted or radiated. It may be difficult to determine how the noise is entering the system but the corrective actions for either of the types of noise problems are similar.

- Conducted noise is when the electrical interference is introduced into the system by way of an attached wire, panel connection, etc. It may enter through an I/O module, a power supply connection, the communication ground connection, or the chassis ground connection.
- Radiated noise is when the electrical interference is introduced into the system without a direct electrical connection, much in the same manner as radio waves.

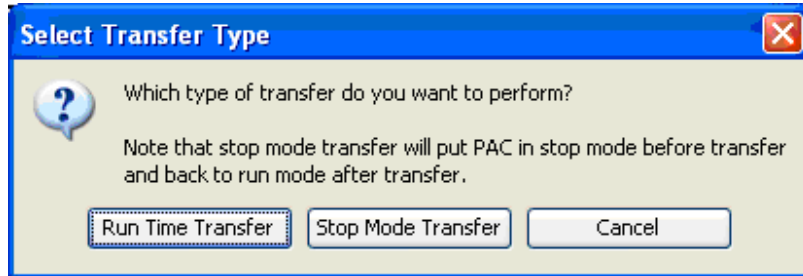
## Reducing Electrical Noise

While electrical noise cannot be eliminated it can be reduced to a level that will not affect the system.

- Most noise problems result from improper grounding of the system. A good earth ground can be the single most effective way to correct noise problems. If a ground is not available, install a ground rod as close to the system as possible. Ensure all ground wires are single point grounds and are not daisy chained from one device to another. Ground metal enclosures around the system. A loose wire is no more than a large antenna waiting to introduce noise into the system; therefore, you should tighten all connections in your system. Loose ground wires are more susceptible to noise than the other wires in your system. Review Chapter 3, *Installation and Wiring*, if you have questions regarding how to ground your system.
- Electrical noise can enter the system through the power source for the CPU and I/O. Installing an isolation transformer for all AC sources can correct this problem. DC power sources should be well grounded, good quality power supplies. Switching DC power supplies commonly generate more noise than linear supplies.
- Separate input wiring from output wiring. Never run I/O wiring close to high voltage wiring.

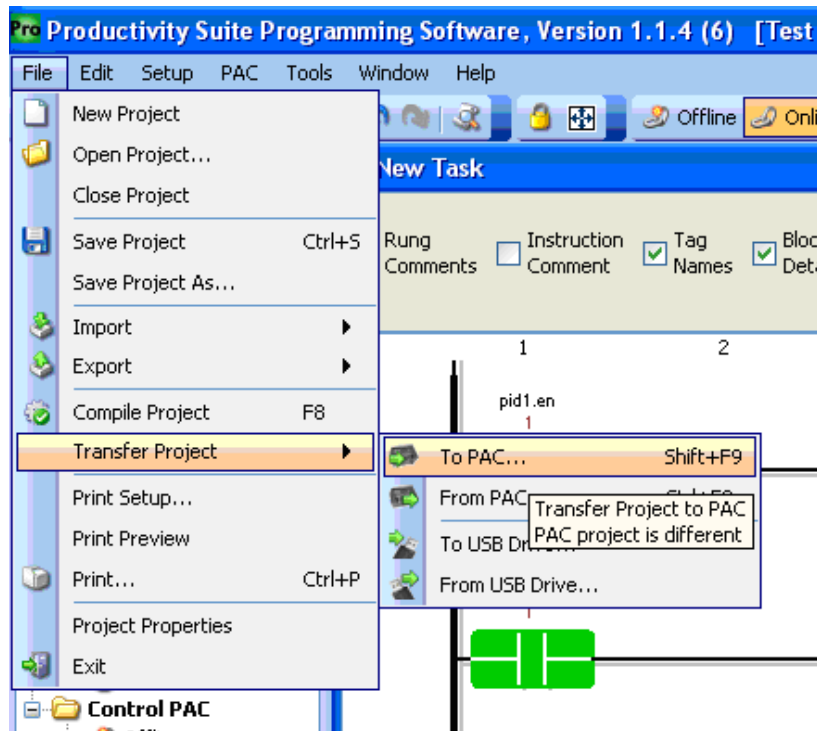
## Run Time vs. Stop Mode Transfer Instruction

Here we describe the actions and differences between Run Time & Stop Mode transfers.



The above dialog is accessed two ways:

1. From the Transfer to PAC icon on the tool bar, or
2. From the File menu > Transfer Project > To PAC



### Run Time Transfers

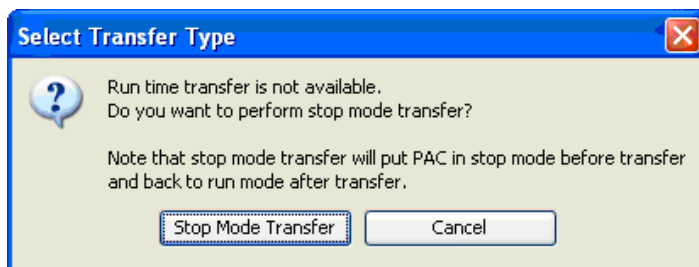
Run Time transfers allow the user to transfer edits to a project back into the CPU without stopping the CPU scan, therefore not stopping the process. Be aware that a Run Time transfer will affect the length of your scan time, which should be considered if your process is susceptible to varying or lengthy scan times. The download time is longer compared to a Stop Mode transfer.

During a Run Time transfer, the current project file continues running until the entire project file is transferred to the CPU. Once downloaded, the ladder logic files swap and begin executing the new file. The Tag Database is shared between the two project files during a Run Time transfer, therefore current operating values will not be effected.

Because the Tag database is shared, any edits to the Tag database will force a Stop Mode transfer.

## 6

### Stop Mode Transfers



Stop Mode transfers allows the user to transfer any and all ladder, Tag database and configuration changes to the CPU.

Because the CPU is in stop mode, the project transfer is much faster than a Run Time transfer and also loads all initial values to the tags once the project is switched from Stop to Run.

There are also conditions that will force the user to perform a Stop Mode transfer.

1. Any changes to the hardware configuration, such as:
  - A. Adding or removing hardware.
  - B. Changing the configuration of a piece of hardware.
    - Ethernet or serial port configuration.
    - Hot swap enable or disable on any module or base.
2. Adding or changing any Array data type Tags.
3. Adding or changing any String data type Tags.



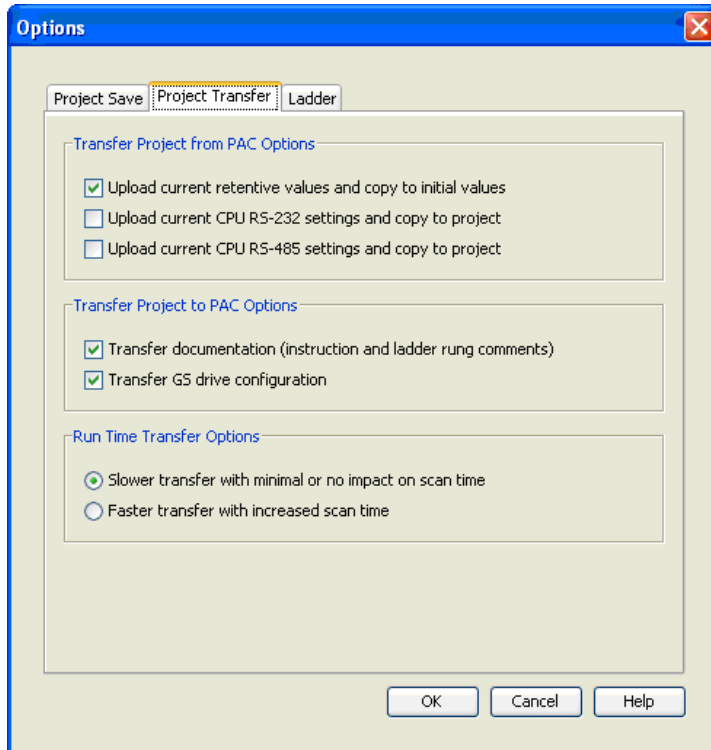
---

Note: Be careful when performing a Stop Mode transfer. The retentive values in your PC project may not be current and non-retentive data will be cleared (reset to 0) when you switch your CPU from Stop to Run.

---

There are steps you can take to ensure that your data is as current as possible before performing a transfer.

1. A Run Time transfer does not load initial values and therefore the best method for keeping data current. However, a Run Time transfer is not always allowed. (see the preceding list of conditions that will force a Stop Mode transfer.)
2. Select “Upload current retentive values and copy to initial values” from the Tools menu > Options > Project Transfer tab.



With this option selected, you can place the CPU in Stop mode so retentive values are stable, upload the project, perform your edits, and then transfer the project back to the CPU.

## Forcing I/O Points

Here we are going to describe the actions, expectations and indications when forcing a value within the Productivity3000 controller.

### Advantages of Forces

Almost all tags can be written to within your software without the use of Forces. However, if the ladder logic or an external device (Operator interface panel, Modbus device, etc.) is connected to your controller and writing to those tags, the values you write from a Data View will be over-written. Conversely, if you write a Force value, this will not be overwritten or reset until you manually remove the force or reset by means of a Stop to Run mode transition, Stop mode project transfer, or a controller power cycle.

### Enabling Forces

The Productivity3000 is a Tag based controller and forcing a tag begins by identifying any tag you wish to be “Forceable” within the Tag database.

The screenshot shows the 'Tag Database' editor window. At the top, there are filter options for 'Tags to show in the Editor' with checkboxes for Discrete Inputs, Analog Inputs, Integers, System Data, Booleans, Discrete Outputs, Analog Outputs, Floats, and Strings. Below this is an 'Editor' section with a table of tags. The table has columns: Name, Type, Retentive, Init Value, Mod Start, Mod End, Forceable, Init Forced, Init Force Value, and Comment. The 'Forceable' column contains checkboxes, many of which are checked. At the bottom of the editor are 'Add Tags' and 'Delete Tags' buttons.

Name	Type	Retentive	Init Value	Mod Start	Mod End	Forceable	Init Forced	Init Force Value	Comment
PID1.alm.hystr	Integer, 32 Bit	<input checked="" type="checkbox"/>	0			<input type="checkbox"/>	<input type="checkbox"/>	0	
pid1.auto	Boolean	<input checked="" type="checkbox"/>	<input type="checkbox"/>			<input checked="" type="checkbox"/>	<input type="checkbox"/>	<input type="checkbox"/>	
PID1.bias	Integer, 32 Bit	<input type="checkbox"/>	0			<input checked="" type="checkbox"/>	<input type="checkbox"/>	0	
PID1.cas.en	Boolean	<input type="checkbox"/>	<input type="checkbox"/>			<input checked="" type="checkbox"/>	<input type="checkbox"/>	<input type="checkbox"/>	
PID1.cascade	Boolean	<input checked="" type="checkbox"/>	<input type="checkbox"/>			<input checked="" type="checkbox"/>	<input type="checkbox"/>	<input type="checkbox"/>	
PID1.D	Integer, 32 Bit	<input checked="" type="checkbox"/>	0			<input checked="" type="checkbox"/>	<input type="checkbox"/>	0	
PID1.dev.org	Integer, 32 Bit	<input checked="" type="checkbox"/>	0	400001	400002	<input checked="" type="checkbox"/>	<input checked="" type="checkbox"/>	5000	
PID1.dev.orgb	Boolean	<input checked="" type="checkbox"/>	<input type="checkbox"/>	000001	000001	<input checked="" type="checkbox"/>	<input checked="" type="checkbox"/>	<input checked="" type="checkbox"/>	
PID1.dev.yel	Integer, 32 Bit	<input checked="" type="checkbox"/>	0	400003	400004	<input checked="" type="checkbox"/>	<input type="checkbox"/>	0	
PID1.dev.yelb	Boolean	<input checked="" type="checkbox"/>	<input type="checkbox"/>	000002	000002	<input checked="" type="checkbox"/>	<input type="checkbox"/>	<input type="checkbox"/>	
pid1.en	Boolean	<input checked="" type="checkbox"/>	<input type="checkbox"/>			<input checked="" type="checkbox"/>	<input checked="" type="checkbox"/>	<input checked="" type="checkbox"/>	
PID1.FF	Boolean	<input type="checkbox"/>	<input type="checkbox"/>			<input checked="" type="checkbox"/>	<input type="checkbox"/>	<input type="checkbox"/>	
PID1.h	Integer, 32 Bit	<input checked="" type="checkbox"/>	0			<input checked="" type="checkbox"/>	<input checked="" type="checkbox"/>	10000	
PID1.hb	Boolean	<input checked="" type="checkbox"/>	<input type="checkbox"/>			<input checked="" type="checkbox"/>	<input type="checkbox"/>	<input type="checkbox"/>	
PID1.hh	Integer, 32 Bit	<input checked="" type="checkbox"/>	0			<input checked="" type="checkbox"/>	<input type="checkbox"/>	0	
PID1.hhb	Boolean	<input checked="" type="checkbox"/>	<input type="checkbox"/>			<input checked="" type="checkbox"/>	<input type="checkbox"/>	<input type="checkbox"/>	
PID1.I	Integer, 32 Bit	<input checked="" type="checkbox"/>	0			<input type="checkbox"/>	<input type="checkbox"/>	0	

There are three columns within the Tag database that affect the forcing of all tags.

1. “Forceable” - Checking the box in this column identifies the corresponding tag as being able to be forced within the system.
2. “Init Forced” - Checking the box in this column identifies that corresponding tag as being forced as soon as the project is loaded and the processor is switched to Run mode.
3. “Init Force Value” - The state of the box in this column identifies the initial forced state of the Boolean tag:
  - A check mark in a box equals a logical “1” or “ON”, and
  - An unchecked box equals a logical ”0” or “OFF”. The value placed in this field for Integer or Floating point tags will be written into the tag.

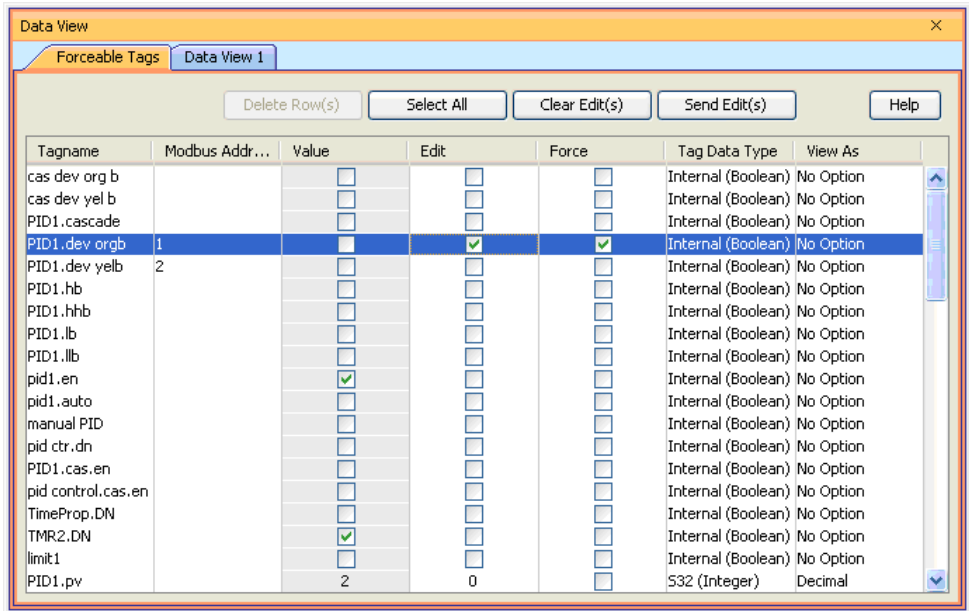
### Forcing Tags in Your System

All forcing of tags is accomplished through the Data View window.

Tagname	Modbus Addr...	Value	Edit	Force	Tag Data Type	View As
pid1.en		<input checked="" type="checkbox"/>	<input checked="" type="checkbox"/>	<input type="checkbox"/>	Internal (Boolean)	No Option
pid1.auto		<input type="checkbox"/>	<input checked="" type="checkbox"/>	<input type="checkbox"/>	Internal (Boolean)	No Option
PID1.dev yel	400003	0	5	<input type="checkbox"/>	S32 (Integer)	Decimal
PID1.dev yelb	2	<input type="checkbox"/>	<input type="checkbox"/>	<input type="checkbox"/>	Internal (Boolean)	No Option
limit1		<input type="checkbox"/>	<input checked="" type="checkbox"/>	<input type="checkbox"/>	Internal (Boolean)	No Option
PID1.dev org	400001	0	15	<input type="checkbox"/>	S32 (Integer)	Decimal
PID1.dev orgb	1	<input type="checkbox"/>	<input type="checkbox"/>	<input type="checkbox"/>	Internal (Boolean)	No Option
PID1.pv		42	1	<input type="checkbox"/>	S32 (Integer)	Decimal
PID1.sp		4	45	<input type="checkbox"/>	S32 (Integer)	Decimal
PID1.out		0	1000	<input type="checkbox"/>	S32 (Integer)	Decimal
PID1.bias		0	1000	<input type="checkbox"/>	S32 (Integer)	Decimal
manual PID		<input type="checkbox"/>	<input checked="" type="checkbox"/>	<input type="checkbox"/>	Internal (Boolean)	No Option
Avg Scan Inter...		8	0	<input type="checkbox"/>	System 16 (Inte...	Decimal
PID1.alm.hystr		0	10000	<input type="checkbox"/>	S32 (Integer)	Decimal
PID1.cas.en		<input type="checkbox"/>	<input checked="" type="checkbox"/>	<input type="checkbox"/>	Internal (Boolean)	No Option
Battery Low Bit		<input type="checkbox"/>	<input type="checkbox"/>	<input type="checkbox"/>	System Bits	No Option

## Chapter 6: Maintenance and Troubleshooting

From the DataView Window, enter the tags you wish to force, or you can view all forceable tags from the “Forceable Tags” tab automatically created for you when you enable tags as forceable in the tag database.



Tagname	Modbus Addr...	Value	Edit	Force	Tag Data Type	View As
cas dev org b			<input type="checkbox"/>	<input type="checkbox"/>	Internal (Boolean)	No Option
cas dev yel b			<input type="checkbox"/>	<input type="checkbox"/>	Internal (Boolean)	No Option
PID1.cascade			<input type="checkbox"/>	<input type="checkbox"/>	Internal (Boolean)	No Option
PID1.dev orgb	1		<input checked="" type="checkbox"/>	<input checked="" type="checkbox"/>	Internal (Boolean)	No Option
PID1.dev yelb	2		<input type="checkbox"/>	<input type="checkbox"/>	Internal (Boolean)	No Option
PID1.hb			<input type="checkbox"/>	<input type="checkbox"/>	Internal (Boolean)	No Option
PID1.hhb			<input type="checkbox"/>	<input type="checkbox"/>	Internal (Boolean)	No Option
PID1.lb			<input type="checkbox"/>	<input type="checkbox"/>	Internal (Boolean)	No Option
PID1.llb			<input type="checkbox"/>	<input type="checkbox"/>	Internal (Boolean)	No Option
pid1.en			<input checked="" type="checkbox"/>	<input type="checkbox"/>	Internal (Boolean)	No Option
pid1.auto			<input type="checkbox"/>	<input type="checkbox"/>	Internal (Boolean)	No Option
manual PID			<input type="checkbox"/>	<input type="checkbox"/>	Internal (Boolean)	No Option
pid ctr.dn			<input type="checkbox"/>	<input type="checkbox"/>	Internal (Boolean)	No Option
PID1.cas.en			<input type="checkbox"/>	<input type="checkbox"/>	Internal (Boolean)	No Option
pid control.cas.en			<input type="checkbox"/>	<input type="checkbox"/>	Internal (Boolean)	No Option
TimeProp.DN			<input type="checkbox"/>	<input type="checkbox"/>	Internal (Boolean)	No Option
TMR2.DN			<input checked="" type="checkbox"/>	<input type="checkbox"/>	Internal (Boolean)	No Option
limit1			<input type="checkbox"/>	<input type="checkbox"/>	Internal (Boolean)	No Option
PID1.pv		2	0	<input type="checkbox"/>	S32 (Integer)	Decimal

From either of these windows you have the option to select the check box in the Force column. When this box is checked and the row is selected (selected rows show high-lighted blue) and you select the Send Edit(s) button, the current row(s) will be forced.

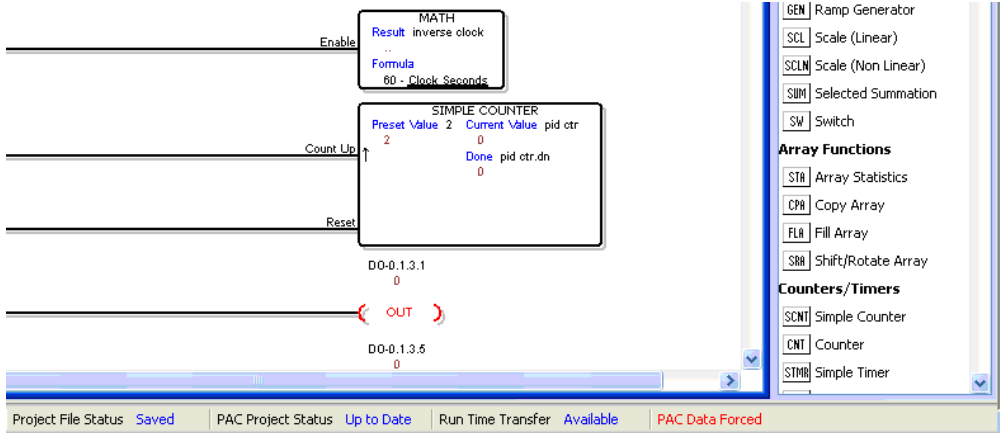


*Note: You can select multiple rows by clicking and holding down the left mouse button and dragging up or down. This selects consecutive rows. If you wish to select various rows, simple hold the “Ctrl” control key on your keyboard while left mouse clicking the rows.*

## Identifying Forced Values

There are two indications that forces are active on your controller.

1. All active forces will be shown in the Forceable tab of the Data View window as shown in the previous view.
2. You will also see “PAC Data Forced” in Red in the lower right of the Status bar of your software.



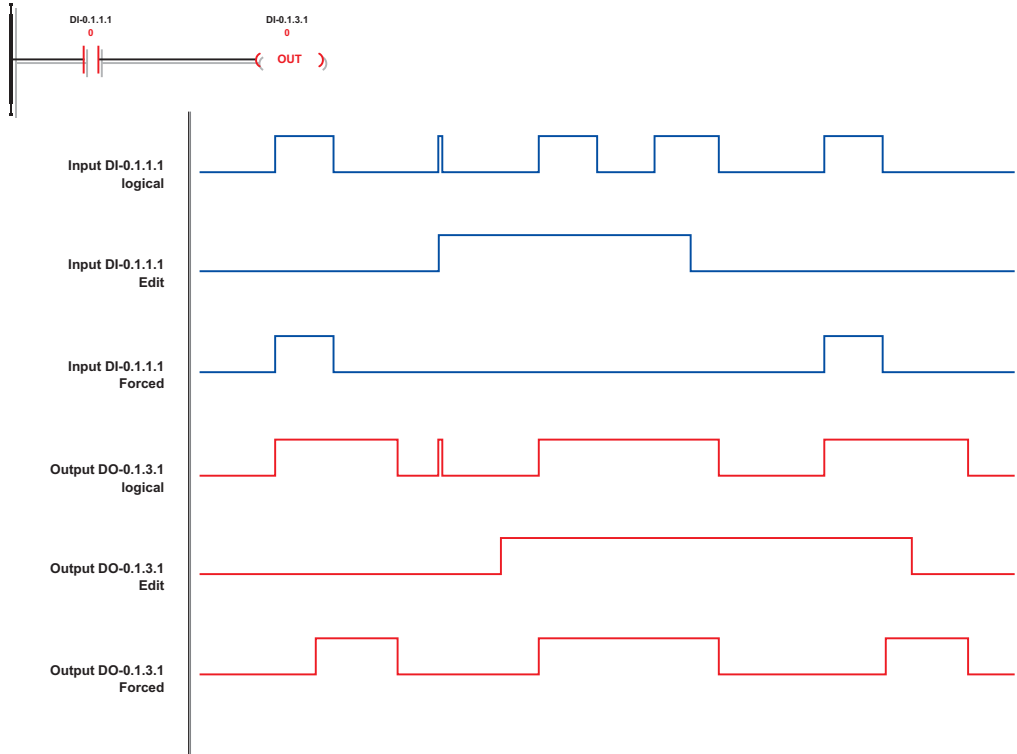
6



*Note: Only Forced tags with an initial force value specified in the Tag database will be retained after a Stop to Run transition, Stop Mode transfer, or a power cycle. All forced values are retained during a Run Time transfer.*

### Force Value Timing Chart

You chart below show the varying states of a Digital Output & Input represented in the logic rung when no edits or forces are applied, when edits are applied and when forces are applied.



**Input “Logical”** represents the logical value of the digital input.

**Input “Edit”** represents an edit sent to a digital input from the Data View, but not forced. This value is written once but then over-written the very next scan by the logical input.

**Input “Forced”** represents a Force sent to the input from the Data View. At any point when the Force is active the Input logic is On or High.

**Output “logical”** represents the logical value of the digital output.

**Output “Edit”** represents an edit sent to a digital output from the Data View, but not forced. Unlike the input edits, this edit will not register if another value is writing to the output, but will transition the output On or High if there are no other logic or outside factors.

**Output “Forced”** represents a Force sent to the output from the Data View. At any point when the Force is active the Output logic is On or High.