

## Output Specifications

|                                     |                                      |                              |
|-------------------------------------|--------------------------------------|------------------------------|
| Outputs per Module                  | 8 ( sourcing)                        |                              |
| Operating Voltage Range (Tolerance) | CE                                   | 6.25 – 24 VDC (-15% / + 20%) |
|                                     | UL                                   | 6 – 27 VDC (-15% / + 10%)    |
| Maximum Output Current @ Temp       | 2A / point, 4A / common @ 60°C       |                              |
| Minimum Output Current              | 0.4 mA                               |                              |
| Maximum Leakage Current             | 0.3 mA @ 30 VDC                      |                              |
| On Voltage Drop                     | 0.4 VDC @ 2A                         |                              |
| Maximum Inrush Current              | 4A for 10 ms                         |                              |
| OFF to ON Response                  | ≤ 1 ms                               |                              |
| ON to OFF Response                  | ≤ 1.5 ms                             |                              |
| Terminal Type (not included)        | 20 position removable terminal block |                              |
| Status Indicators                   | Logic Side (8 points)                |                              |
| Commons                             | 4 Isolated (2 points / common)       |                              |



## P3-08TD2S Sourcing Output

The P3-08TD2S DC Output Module provides eight 6-27 VDC sourcing outputs with 4 isolated commons for use with the Productivity3000 Programmable Automation Controller.

|   |   |
|---|---|
| Input Specifications                    | 1 |
| Module Installation Procedure           | 2 |
| Terminal Block Removal                  | 2 |
| Hot Swap Information                    | 2 |
| Wiring Options                          | 3 |
| Schematic and Wiring Diagram            | 3 |
| Warning                                 | 4 |
| Removable Terminal Block Specifications | 4 |
| General Specifications                  | 4 |

**WARNING:** Explosion hazard – Substitution of components may impair suitability for Class I, Division 2.

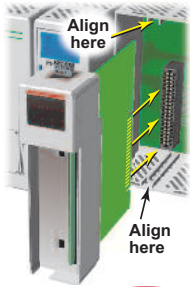
Warranty: Thirty-day money-back guarantee. Two-year limited replacement. (See [www.productivitypac.com](http://www.productivitypac.com) for details).

| Document Name | Edition/Revision | Date       |
|---------------|------------------|------------|
| P3-08TD2S-M   | 1st Ed.          | 10/26/2009 |

Copyright 2009, AutomationDirect.com Incorporated/All Rights Reserved Worldwide

**Terminal Block sold separately, Terminal Block Cover included (see wiring options on page 3).**

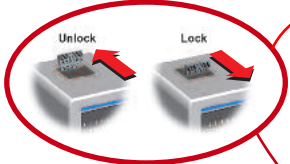
# Module Installation Procedure



**WARNING:** Do not apply field power until the following steps are completed. See hot-swapping procedure for exceptions.

**Step One:** Align circuit card with slot and press firmly to seat module into connector.

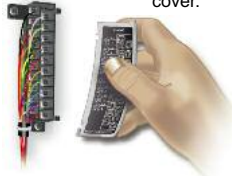
**Step Two:** Pull top and bottom locking tabs toward module face. Click indicates lock is engaged.



**Step Three:** Attach field wiring using optional terminal block or ZIPLink wiring system and install cover.

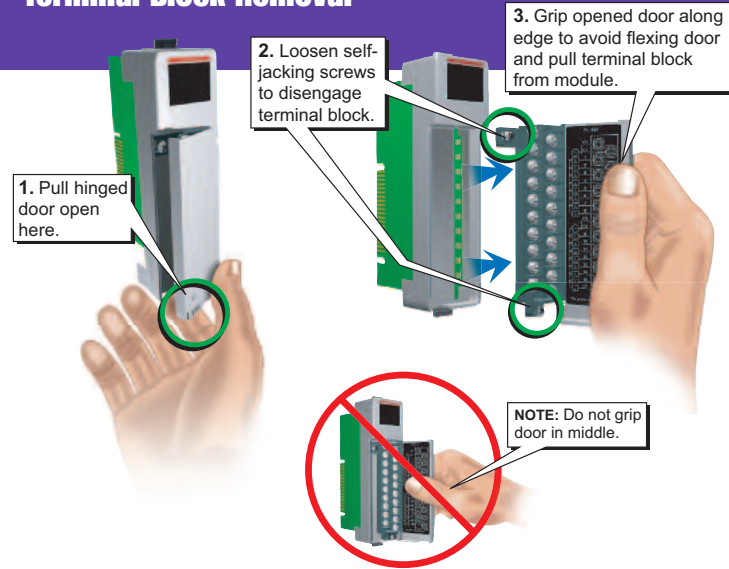


To install or remove terminal block cover, press middle to flex cover.



**WARNING:** Explosion hazard – Do not connect or disconnect connectors or operate switches while circuit is live unless the area is known to be non-hazardous. Do not hot-swap modules unless the area is known to be non-hazardous.

# Terminal Block Removal



**Important Hot-Swap Information**

**The Productivity3000 PAC supports hot-swap!** Individual modules, expansion bases, and entire remote base groups can be taken offline, removed, and replaced while the rest of the PAC system continues controlling your process. Before attempting to use the hot-swap feature, be sure to read the hot-swap topic in the programming software's help file or our online documentation at [AutomationDirect.com](http://AutomationDirect.com) for details on how to plan your installation for use of this powerful feature.

# Wiring Options

## 1 ZIPLink Connection System Cable + ZIPLink Module = Complete System

### ZIPLink pre-wired terminal block cables



0.5m (1.6FT) cable  
1.0m (3.3FT) cable  
2.0m (6.6FT) cable

**ZIPLINK**  
AUTOMATIONDIRECT™  
ZL-P3-CBL20-L  
ZL-P3-CBL20-1L  
ZL-P3-CBL20-2L

### ZIPLink Modules



Feed through

ZL-RTB20

## 2 Terminal Block with pigtail cable



0.5m (1.6FT) cable  
1.0m (3.3FT) cable  
2.0m (6.6FT) cable

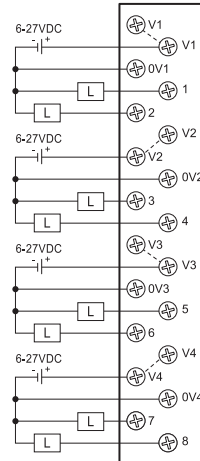
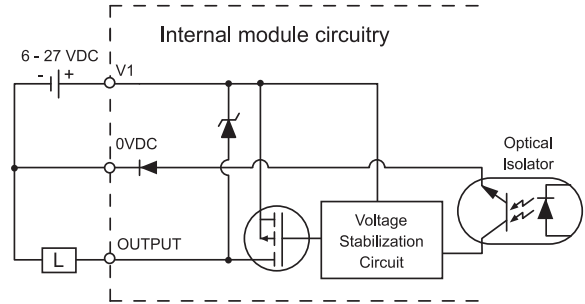
**ZIPLINK**  
AUTOMATIONDIRECT™  
ZL-P3-CBL20-P  
ZL-P3-CBL20-1P  
ZL-P3-CBL20-2P

## 3 Terminal Block only



P3-RTB  
(Quantity 1)

# Schematic and Wiring Diagrams



Each V1 is connected inside the module.  
Each V2 is connected inside the module.  
Each V3 is connected inside the module.  
Each V4 is connected inside the module.

**WARNING:** To minimize the risk of potential safety problems, you should follow all applicable local and national codes that regulate the installation and operation of your equipment. These codes vary from area to area and it is your responsibility to determine which codes should be followed, and to verify that the equipment, installation, and operation are in compliance with the latest revision of these codes.

***Equipment damage or serious injury to personnel can result from the failure to follow all applicable codes and standards. We do not guarantee the products described in this publication are suitable for your particular application, nor do we assume any responsibility for your product design, installation, or operation.***

If you have any questions concerning the installation or operation of this equipment, or if you need additional information, please call Technical Support at 770-844-4200.

This publication is based on information that was available at the time it was printed. At AutomationDirect.com® we constantly strive to improve our products and services, so we reserve the right to make changes to the products and/or publications at any time without notice and without any obligation. This publication may also discuss features that may not be available in certain revisions of the product.

## Removable Terminal Block Specifications

|                     |  |
|---------------------|--|
| Number of Positions | 20 Screw Terminals   |
| Wire Range          | 22-14 AWG (0.324 to 2.08 sq. mm)<br>Solid / Stranded Conductor<br>3/64 in. (1.2 mm) insulation maximum<br>"USE COPPER CONDUCTORS , 60°C" or equivalent.                |
| Screw Driver Width  | 1/4 inch (6.5 mm) maximum  |
| Screw Size          | M3 size  |
| Screw Torque        | Field Terminals – 7- 9 in./lb (.0882 - 1.02 Nm)<br>Self-jacking Screws – 2.7 - 3.6 in./lb (0.3 - 0.4 Nm).<br>Do not overtighten screws when installing terminal block. |

## General Specifications

|                               |  |
|-------------------------------|--|
| Operating Temperature         | 0° to 60°C (32° to 140°F),   |
| Storage Temperature           | -20° to 70°C (-4° to 158°F)  |
| Humidity                      | 5 to 95% (non-condensing)  |
| Environmental Air             | No corrosive gases permitted   |
| Vibration                     | IEC60068-2-6 (Test Fc)   |
| Shock                         | IEC60068-2-27 (Test Ea)  |
| Field to Logic Side Isolation | 1500VAC applied for 1 minute   |
| Insulation Resistance         | >10MΩ @ 500 VDC  |
| Heat Dissipation              | 8.46W  |
| Enclosure Type                | Open Equipment   |
| Agency Approvals              | UL508 file E157382, Canada & USA<br>UL1604 file E200031, Canada & USA<br>CE (EN61131-2*)<br>This equipment is suitable for use in Class 1, Division 2, Groups A, B, C and D or non-hazardous locations only. |
| Module Keying to Backplane    | Electronic   |
| Module Location               | Any I/O slot in any local, expansion, or remote base in a Productivity3000 System.   |
| Field Wiring                  | Removable Terminal Block (not included). Use ZIPLink Wiring System or optional terminal block. See "Wiring Options" on page 3.   |
| EU Directive                  | See the "EU Directive" topic in the Productivity3000 Help File. Information can also be obtained at: <a href="http://www.productivitypac.com">www.productivitypac.com</a>                                    |
| Weight                        | 110g (3.88 oz)   |

\*Meets EMC and Safety requirements. See the D.O.C. for details.