

# 2.0 Installation of DataWorx PLC

Before installing DataWorx PLC:

- Ensure that the PLC(s) and Server/Monitor computer(s) are connected to the network.
- The user must be logged in as an Administrator.
- Close other Windows programs, e.g. virus software.
- Decide which installation type is appropriate:

### 1. DataWorx Server and Monitor on the Same Computer

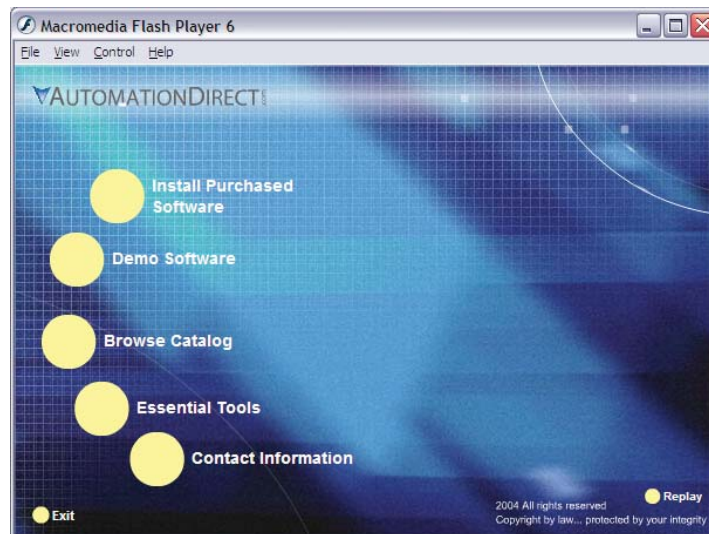
- May be the only option if only one computer is available.
- If hosting the Server and Monitor on different computers, users may install both the Server and Monitor on the Server computer to quickly install and configure.

OR

### 2. DataWorx Server and Monitor on the Different Computers

- Ideal when the physical location of the Server computer is not easily accessible.
- Must note the IP Address or name of the Server computer.

DataWorx PLC software is available on the AutomationDirect Product Showcase CD. To install DataWorx PLC, insert the AutomationDirect CD into the PC's CD drive. The CD should start automatically and open the installation window shown below.



---

*Note: If the AutomationDirect CD does not start automatically, open the Windows **START** menu, select **RUN**, and type:*

***E:\setup.exe***

*Change the letter "E" to correspond to the CD drive.  
Then click **OK**, and the installation program will start.*

---

## DataWorx PLC

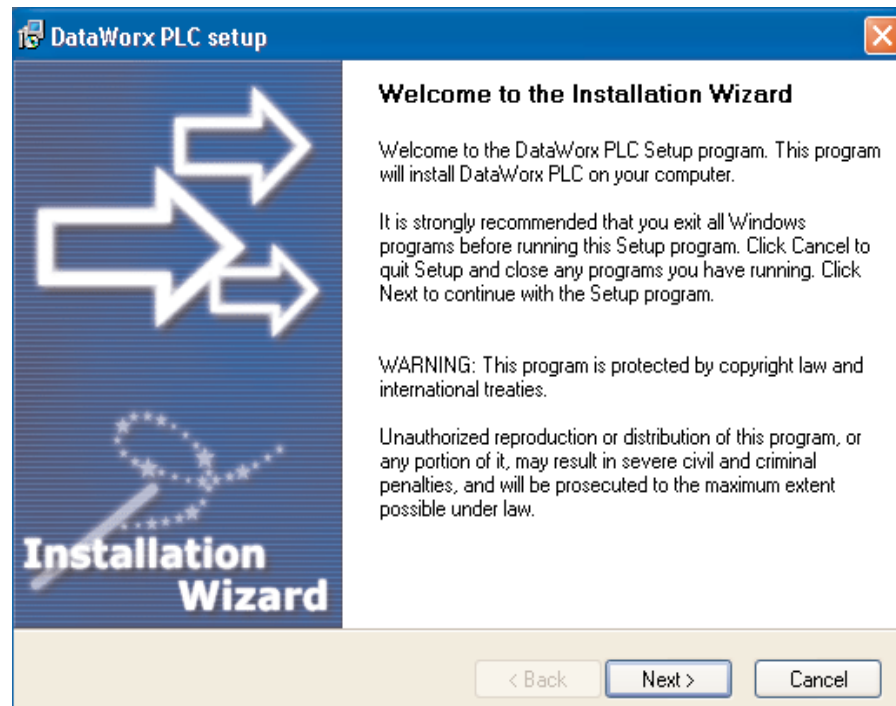
---

The AutomationDirect installation window will display all software options available on this CD. To install DataWorx PLC select the **INSTALL PURCHASED SOFTWARE** option. This selection opens the Product Key window shown below:

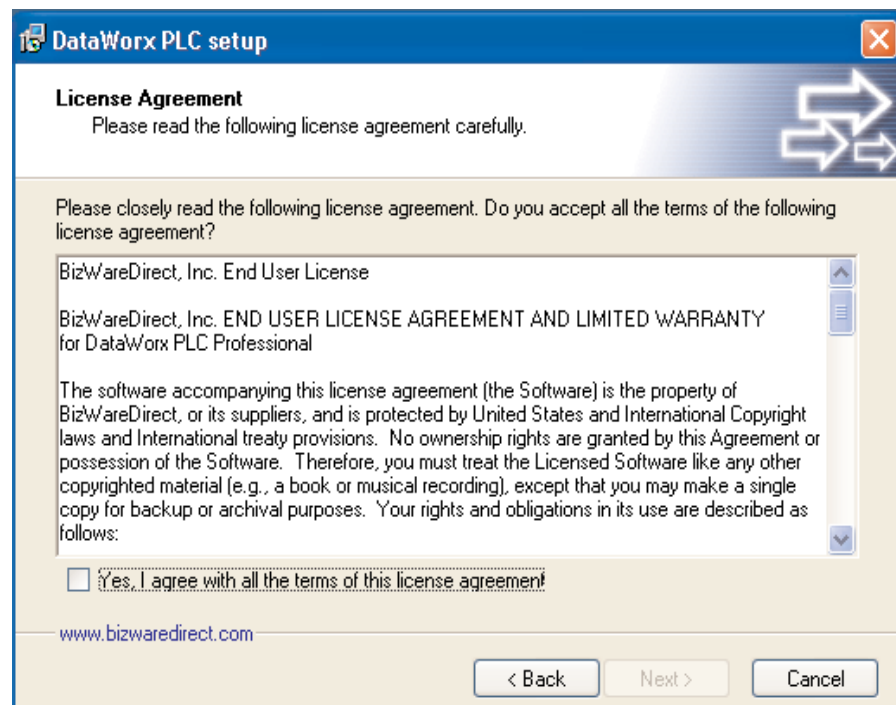


In the given field, enter the Product Key, located on the back cover of the CD case. This software package is protected by the Product Key. Only licensed users that have this key may install the software. After entering the Product Key, click **OK**.

To start the installation program, click NEXT.



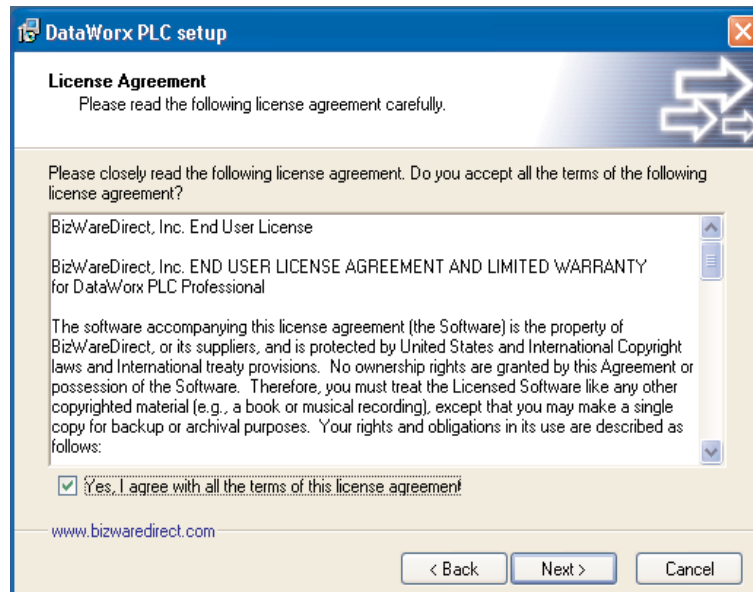
Read and make sure you understand the license agreement.



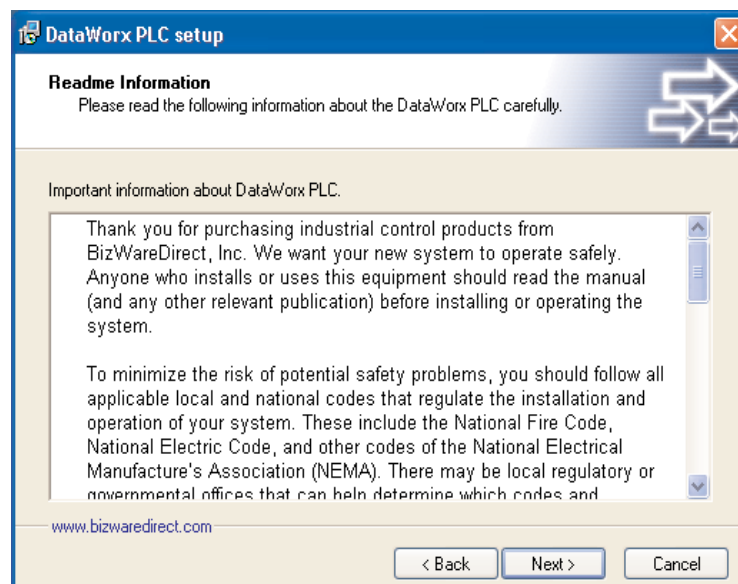
## DataWorx PLC

---

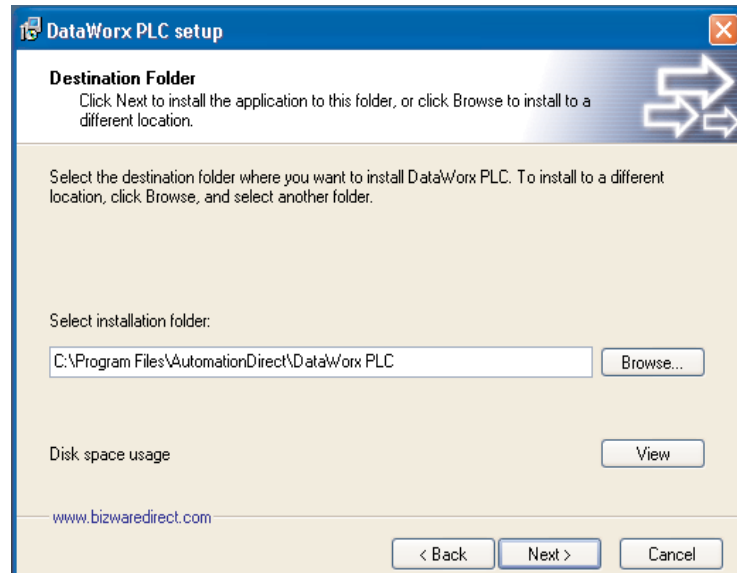
After reading and understanding the license agreement check the "Yes, I agree with the terms of this license agreement" option and click NEXT.



The following window contains important Readme information. After reading this information, click NEXT.



A prompt for the DataWorx PLC Destination Folder will appear. By default, the Destination Folder path is set to *C:\Program Files\AutomationDirect\DataWorx PLC*. The location of the DataWorx PLC files can be changed by clicking **BROWSE** and selecting an alternative folder.



Once the Destination Folder has been determined, click **NEXT**.

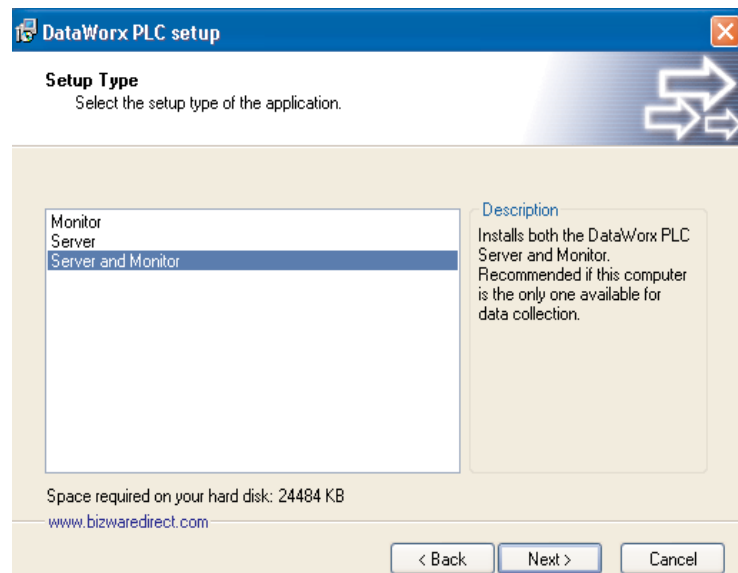
## DataWorx PLC

---

A prompt for the Setup Type will appear.

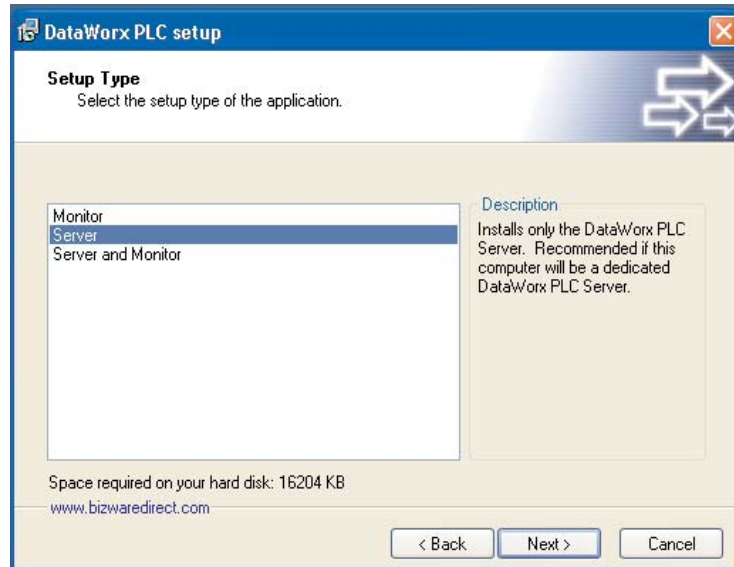
There are three Setup Types: Monitor, Server, and Server and Monitor.

When a Setup Type in the list is selected, its description will appear in the Description section to the right.

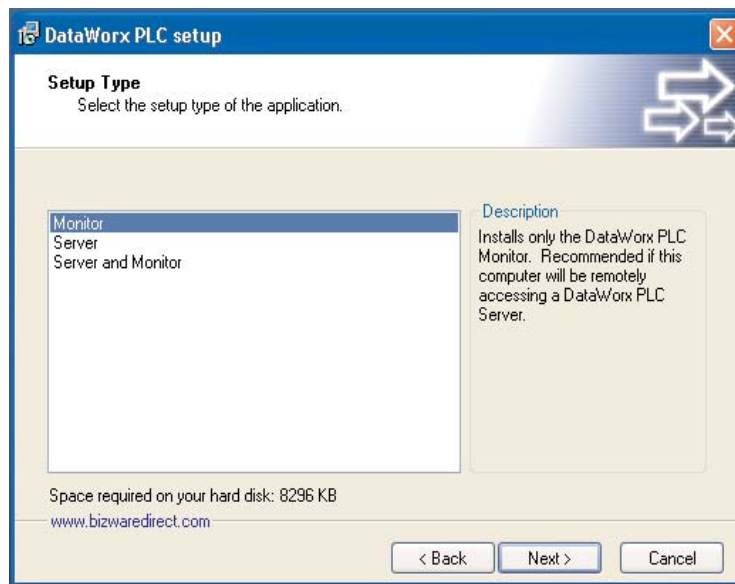


For easy installation and setup, choose to install both the Server and Monitor on the Server PC.

The example below shows the “Server Only” installation option.



The example below shows the “Monitor Only” installation option.

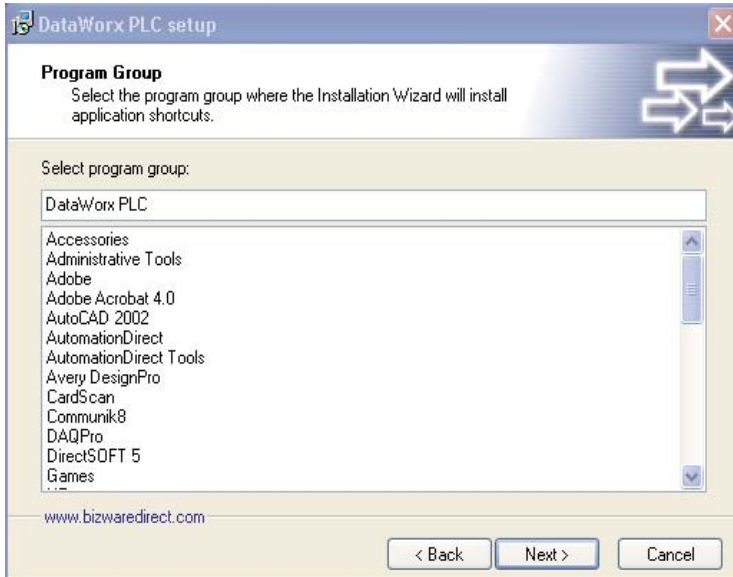


Once the Setup Type has been determined, click NEXT.

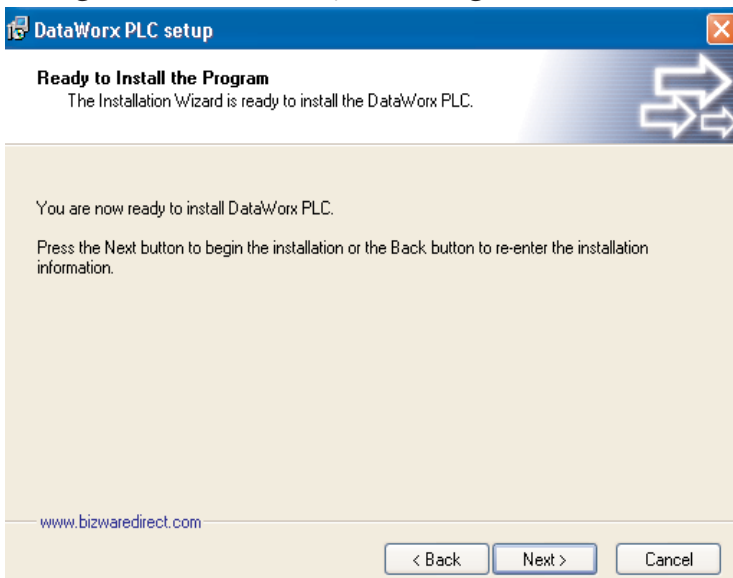
## DataWorx PLC

---

A prompt for the Program Group will appear. By default the Program Group is *DataWorx PLC*. The Program Group may be changed by directly editing it.



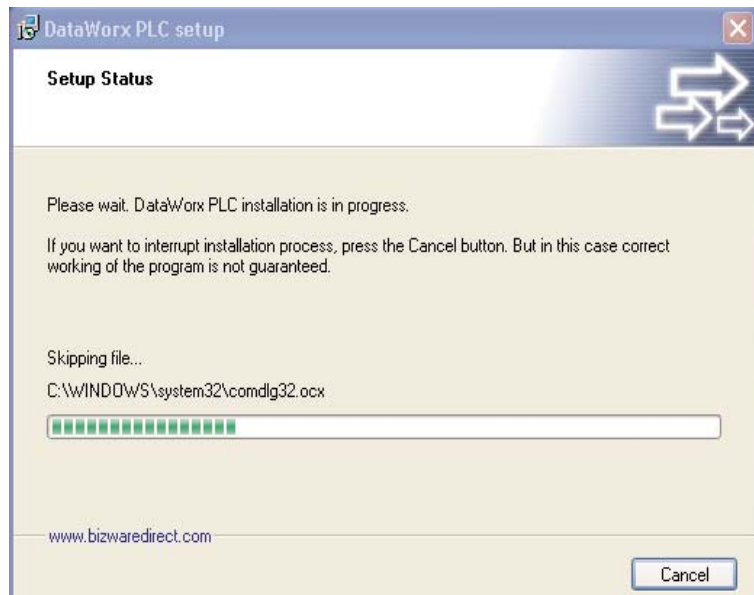
Once the Program Group has been determined, click **NEXT**. A prompt will appear to start the installation process. It is possible to review the installation settings before committing to the install by clicking **BACK**.



Once the installation settings are satisfactory, click **NEXT**.

---

After clicking **NEXT**, a progress meter will appear, indicating the installation progress.



The installation can be stopped at any time, by clicking **CANCEL**.

Once the installation is complete, a notification will appear to confirm that the installation has been successful.

Click **FINISH** to close the DataWorx PLC installer.

