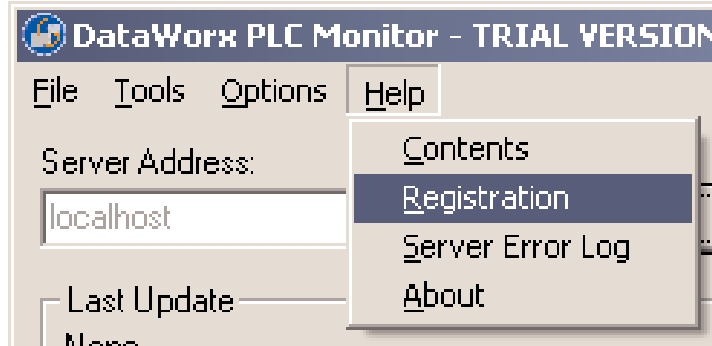


3.0 Registration (required)

Registration Instructions:

- Ensure that the Server is installed and running. (See Chapter 6)
- Start the Monitor and connect to the Server. (See Chapter 6)
- Go to **HELP -> REGISTRATION**

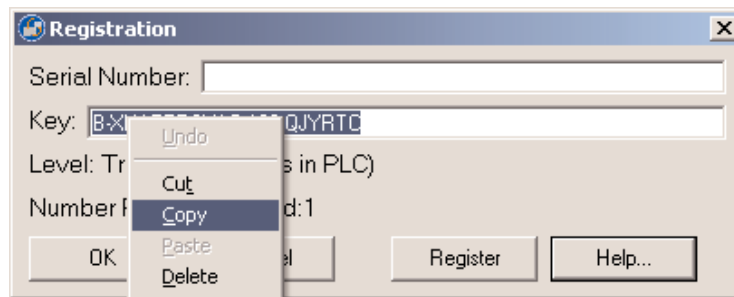


In the registration window copy the Registration Key by highlighting the Key, clicking the right mouse button and selecting **COPY**.



Note: If your PC does not have an active Internet connection, please write down the Registration Key provided in the Registration window. Then, go to a PC with an Internet connection and type the information into the web page as described below.

Registration Code:



With the Internet browser go to <http://www.bizwaredirect.com/dataworxregistration.aspx>
Paste or enter the Registration Key into the “Key” field in the web form. Also, enter the Serial Number, which is located on the back of the CD cover, as well as your order number.

DataWorx Registration Form

Serial Number (From DVD Case)

Key (From DataWorx)



Note: The registration form is case sensitive.

Click **CREATE REGISTRATION**. If the information was entered correctly, the new Assigned Key will appear on the web form as shown below.

Key Code:

DataWorx Registration Form

Serial Number (From DVD Case)

Key (From DataWorx)

How did you **first** hear about BizWareDirect?

Please enter additional information below so we can provide more efficient technical support and alert you of product upgrades. Information submitted is for our internal purposes only and will not be shared with outside parties.

Name:

Company Name:

Address:

Address (Line 2):

City:

State:

Postal/Zip code:

Country (if other than U.S.):

Telephone:

Fax:

E-mail Address:

Purchased From:

Found registration for 3 device(s).

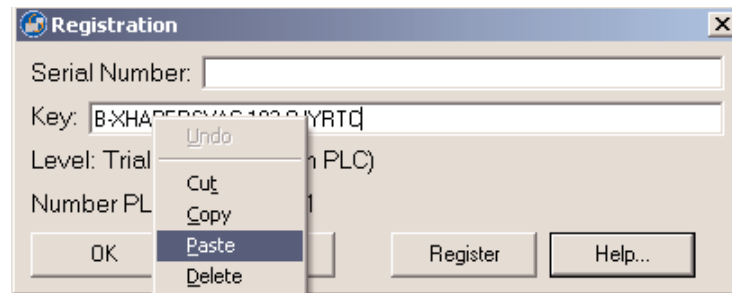
Your assigned key

Thank you for registering!

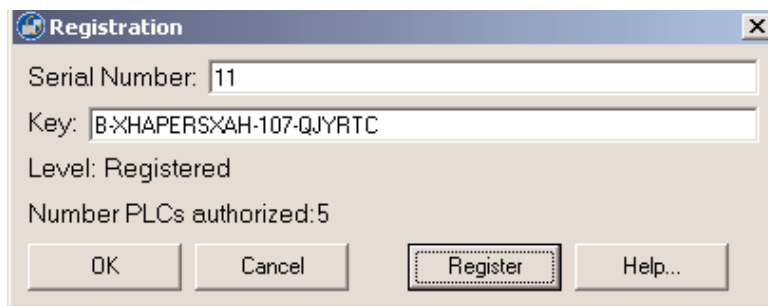
Copy the Assigned Key from the web form.

DataWorx PLC

From the DataWorx Monitor Registration window, paste the Assigned Key into the Key field by clicking the right mouse button and selecting **PASTE**.



Click **REGISTER**.



A confirmation message box and the Registration window will show the registration status.



Click **OK**.