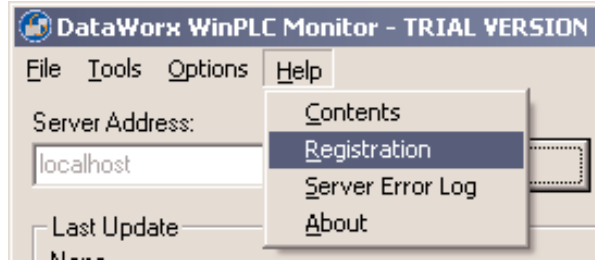


3.0 Registration (required)

Registration Instructions:

- Ensure that the Server is running
- Start the Monitor and connect to the Server
- Go to **HELP** -> **REGISTRATION** in the program's menu

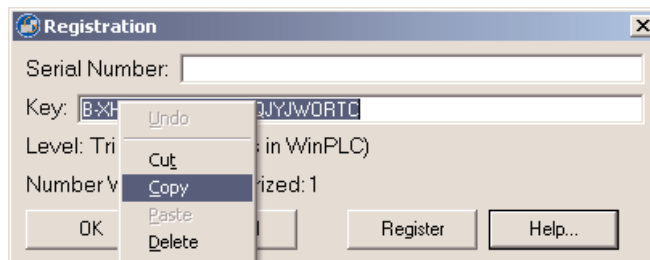


Registration Code:

- Once the Registration window opens, copy the original registration key by highlighting the key, pressing the right mouse button, and selecting **COPY**.



Note: If your PC does not have an active Internet connection, please write down the key provided in the registration window. Then go to a PC with an Internet connection and type your information into the web address as shown below.



- With your browser go to <http://www.bizwaredirect.com/dataworxregistration.aspx> and paste the registration key into the “Key” field on the web form. Also enter the serial number, which is located on the back of the CD cover.

DataWorx Registration Form

Serial Number (From DVD Case)

Key (From DataWorx)



Note: The registration form is case sensitive.

- Click the **CREATE REGISTRATION** button. If all information has been entered correctly, a new unique key should be assigned to you.

DataWorx Registration Form

Serial Number (From DVD Case)

Key (From DataWorx)

How did you **first** hear about BizWareDirect?

Please enter additional information below so we can provide more efficient technical support and alert you of product upgrades. Information submitted is for our internal purposes only and will not be shared with outside parties.

Registration Code:

Name:

Company Name:

Address:

Address (Line 2):

City:

State:

Postal/Zip code:

Country (if other than U.S.):

Telephone:

Fax:

E-mail Address:

Purchased From:

Create Registration

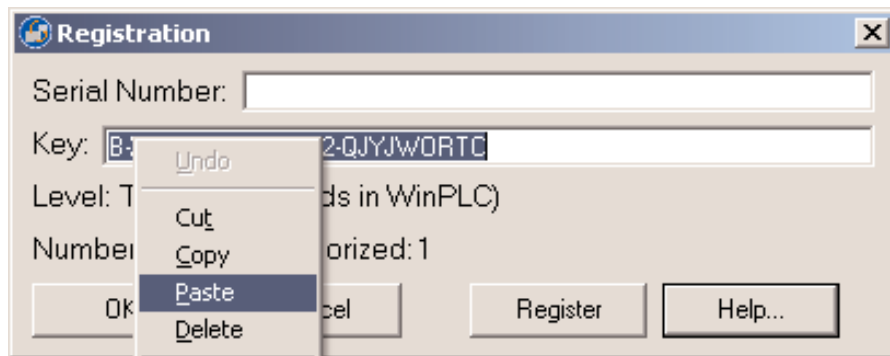
Found registration for 3 device(s).

Your assigned key

Thank you for registering!

DataWorx WinPLC

- Copy the assigned key by highlighting it, pressing the right mouse button and selecting **COPY**. Now, go back to the DataWorx Monitor Registration screen (**HELP** -> **REGISTRATION** in the program's menu). Paste the newly assigned registration key over the original key by highlighting the old key code, pressing the right mouse button and selecting **PASTE**.



Click the **REGISTER** button. A success message and the registration window will show your registration status.



- Click **OK**.