



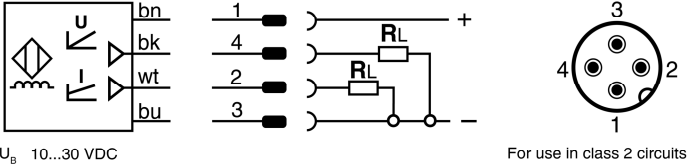
**Metal sensing proximity switch**

**Analog Quasi-embeddable**

Part number **AT9-05-1H**

For use in NFPA 79 Applications only

Housing **M30** Operating distance  $S_n$  **0...20 mm**



Adapters providing field wiring means are available from the manufacturer. Refer to manufacturers information.

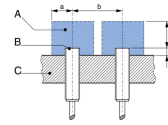


**Mounting recommendations**

**Free zone**

Providing the following free zones is mandatory for reliable operation.

- A metal-free zone
- B sensing face
- C support



$\emptyset$	a [mm]	b [mm]	c [mm]	d [mm]	Mn [Nm]
M30	35	80	60	6	70

**Operating distance**

The effective usable operating distance is

$0.81 s_n < s_f < 1.21 s_n$   
 measured with the square standard target with  
 $l = \emptyset_s$  or  $l = 3 \times s_n$ .

**Tightening torque**

The specified maximum tightening torque  $M_N$  must not be exceeded.

**Sensing face**

The sensing face must not be mechanically damaged.

**Safety**

**These proximity switches must not be used in applications where the safety of people is dependent on their functioning.**



320-014-115

Operators of the products we supply are responsible for compliance with measures for the protection of persons. The use of our equipment in applications where the safety of persons might be at risk is only authorized if the operator observes and implements separate, appropriate and necessary measures for the protection of persons and machines.