

UPDATING FIRMWARE



APPENDIX

A


TABLE OF CONTENTS

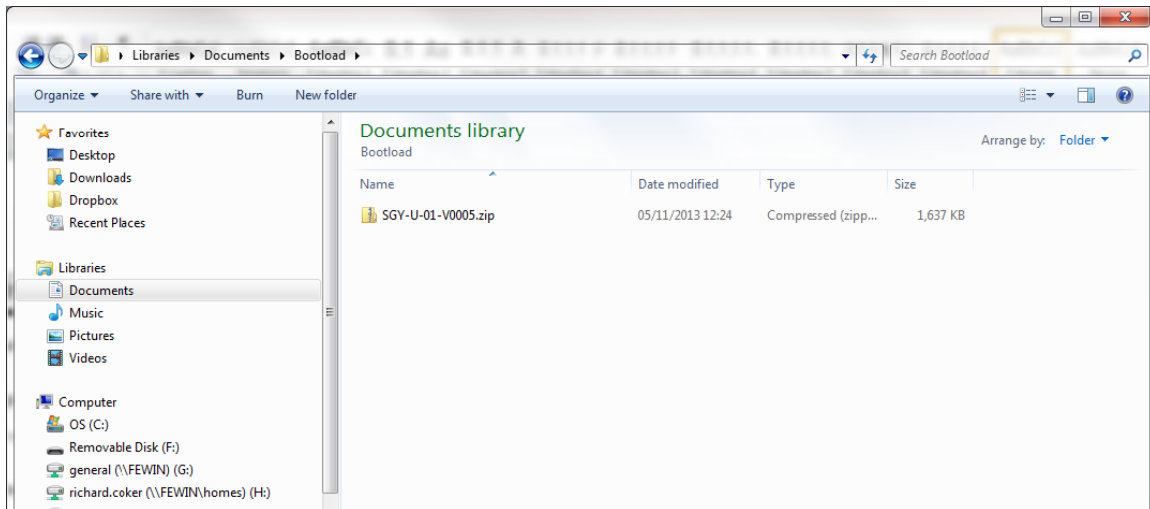
<i>Appendix A: Updating Firmware</i>	A-1
<i>Updating SR55 Firmware</i>	A-2

UPDATING SR55 FIRMWARE

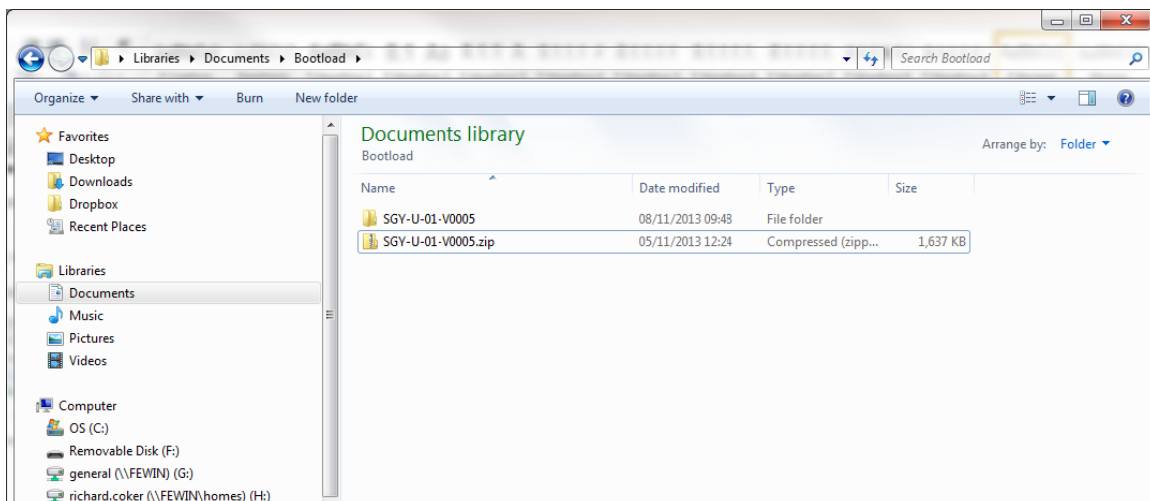
Firmware updates are normally not necessary for the SR55 family of soft starters. If, after talking with AutomationDirect Technical Support, it is determined that your SR55 requires a firmware update, please follow the procedure outlined below. It is advised to save your configuration profile to a USB before updating firmware (Home → Device → Parameters to USB).

INSTRUCTIONS FOR UPDATING THE FIRMWARE OF AN SR55 SOFT STARTER.

- 1) Obtain a USB flash drive, and ensure that it has been formatted to FAT32.
 ADC part number USB-FLASH is a 4GB SanDisk USB flash drive that has been verified to work with the SR55. Other flash drives may be too wide to fit, or may not perform correctly.
- 2) Download a new firmware zip file from the Technical Support Firmware Upgrades page of the AutomationDirect web site:
 (<http://support.automationdirect.com/firmware/index.html>).
- 3) Copy the zip file into a suitable location on your PC that you can extract all of the firmware files.

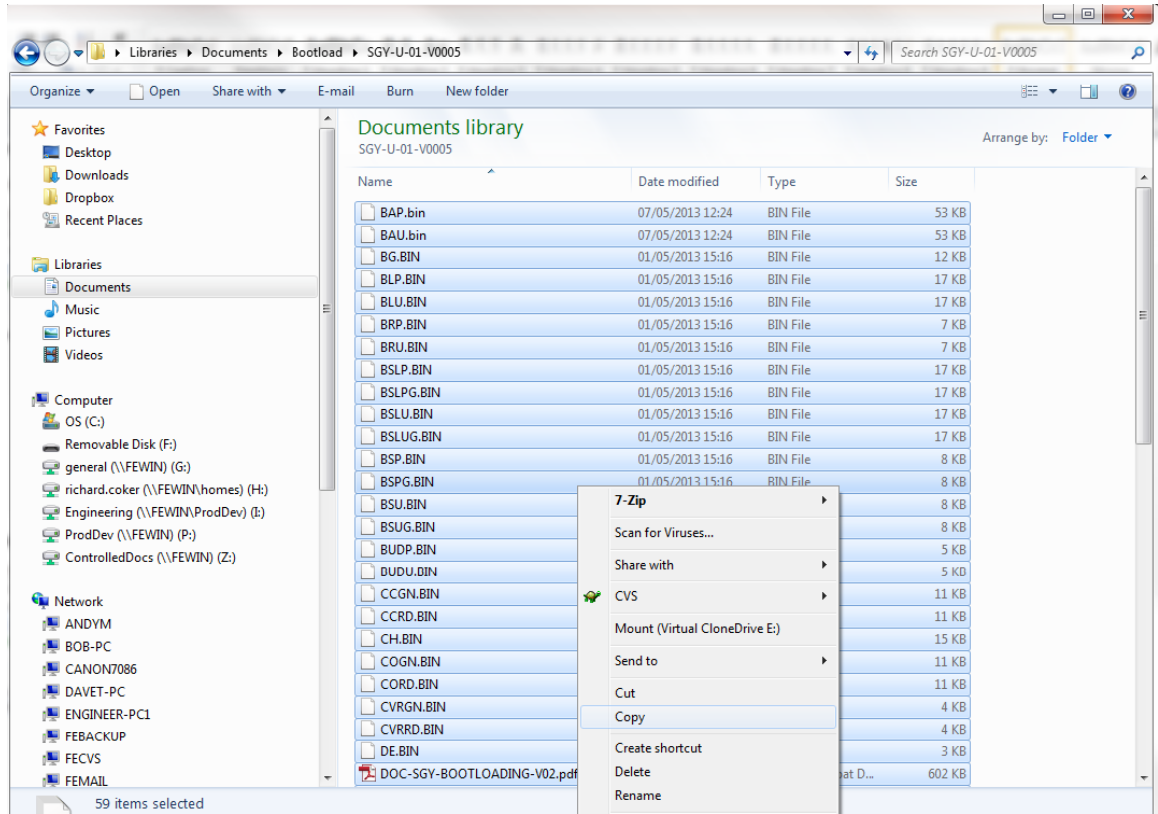


- 4) Right click on the zip file and select extract all. This will create an unzipped directory in the same location with the same name.

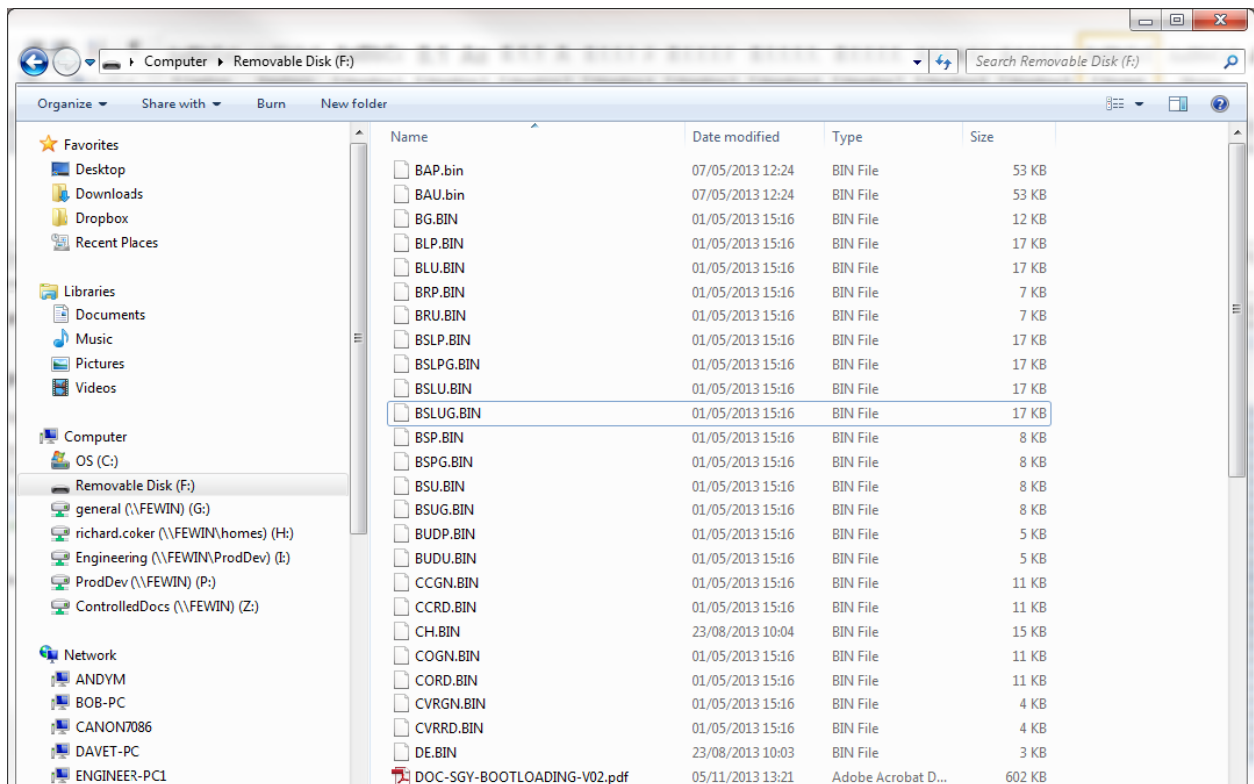


- 5) Double click on the new directory and inside you will see all of the boot-loading files. Select all of these files and copy them onto the root directory of the USB flash drive.

EXTRACTED FOLDER ON PC



USB FLASH DRIVE



- 6) If it is the first power-up, the SR55 will display the “Automatic Set Up” screen. This screen can be skipped when you plan to carry out a firmware update. To do this, select “Advanced,” then press back, and the status screen will be displayed.



- 7) Insert the USB flash drive which contains the new issue of the boot-load firmware into the USB connector on the SR55. (The flash drive is shown in red above the touchscreen.)

If using the remote touchscreen, you will have to update the firmware on that touchscreen also. Follow the same procedure, but insert the USB flash drive into the back of the remote touchscreen.



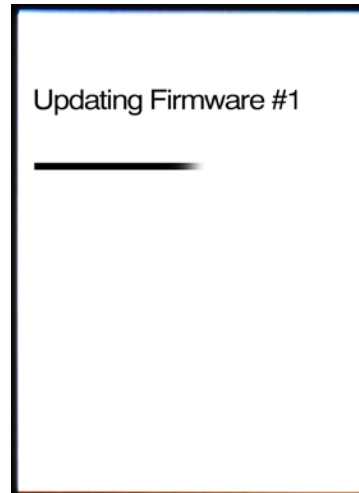
- 8) Navigate through “Home,” “Device,” and “Update Firmware” screens to get to the firmware upgrade page. This page shows the currently installed firmware, as well as the firmware which is to be uploaded.



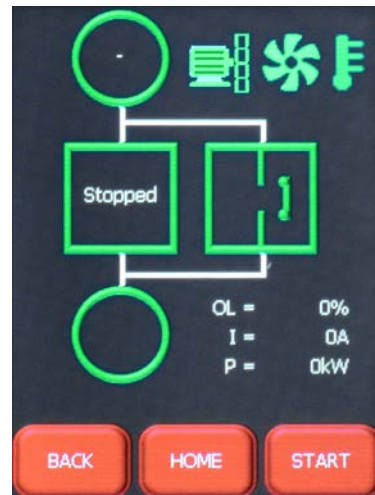
- 9) Once “Update Firmware” and “Confirmation to Update firmware” has been selected, a loading bar will appear which shows the update process has begun.



- 10) Wait for approximately one minute for the updating firmware screen to be displayed. This screen shows the progress of the firmware being installed on the SR55. There are three stages of installation.



- 11) Once the updating process is complete, the SR55 will reboot. When it has fully rebooted the status screen will appear.



**BLANK
PAGE**