

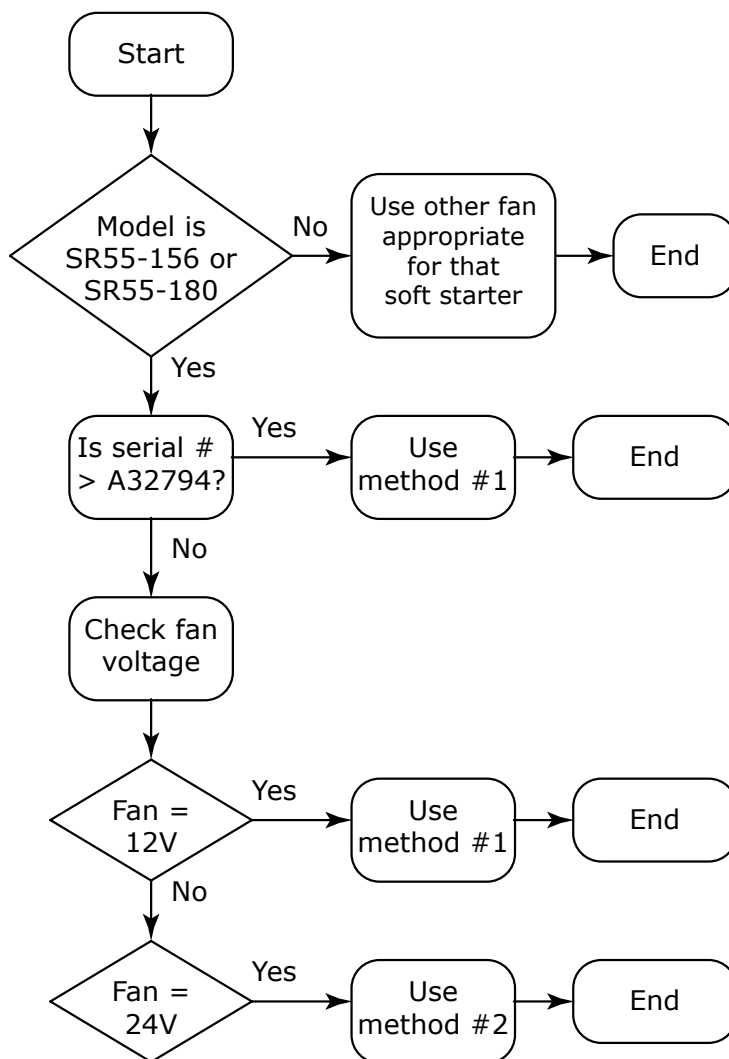
COOLING FAN REPLACEMENT INSTRUCTIONS**REPLACEMENT METHOD SELECTION FLOWCHART**

Use the flowchart below in order to determine which fan replacement method and instructions to use.

Note for SR55-156 and SR55-180 Soft Starters Cooling Fan Replacement

For SR55-156 and SR55-180 soft starters, the fans and internal fan supply voltage could be either 12VDC or 24VDC, depending upon when the soft starter was manufactured. The replacement fan kit (SR55-FAN-6) includes a 12VDC fan and a resistor for use in the 24VDC starters as described below.

For early-model SR55-156 and SR55-180 soft starters, one of the original fans must be removed to observe the voltage rating label. SR55-156 and SR55-180 soft starters with original equipment 24VDC fans will require two SR55-FAN-6 fans kits, and both fans will need to be replaced.

SR55-FAN-6 Soft Starter Fan Replacement Method Selection

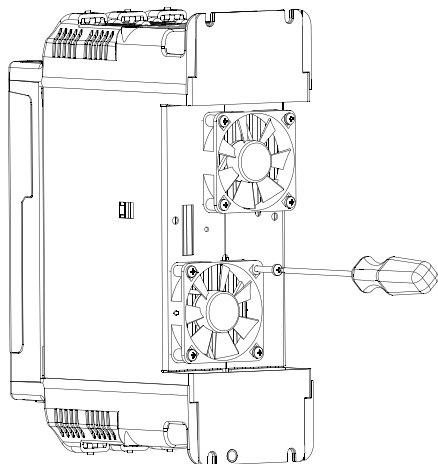
COOLING FAN REPLACEMENT METHOD #1 INSTRUCTIONS

This fan replacement method is applicable for most SR55-156 and SR55-180 soft starters except for early-model SR55-156s and SR55-180s that were originally equipped with 24VDC fans.

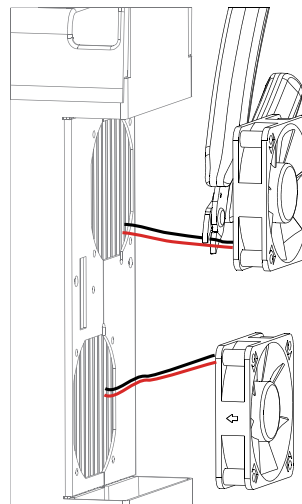
NOTE: Refer to the Replacement Method Selection Flowchart on [page 1](#) to determine which replacement method and instructions to use for your soft starter.

Instructions for Fan Replacement Method #1

1) Unscrew existing fan(s).



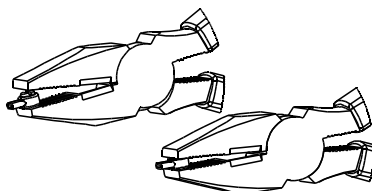
2) Cut wires close to fan(s).



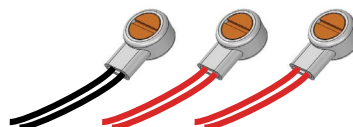
3) Fit black wires from new fan and SR55 into connector (included).



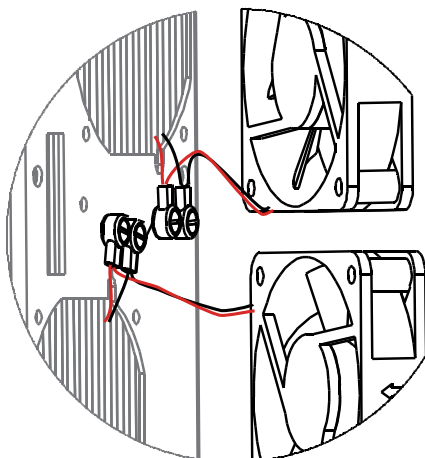
4) Push connector shut with pliers.



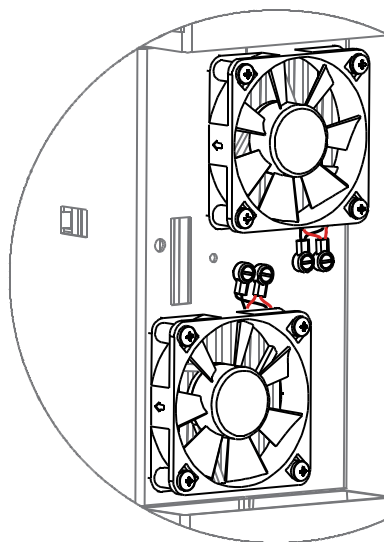
5) Repeat with 2nd pair of black, then 2 pairs of red wires.



6) Position fan(s) and connectors.



7) Affix new fan(s) to SR55.*



* When installing the new fan, ensure that airflow is into the soft starter.
(Note the airflow directional arrow on the fan.)

COOLING FAN REPLACEMENT METHOD #2 INSTRUCTIONS

This fan replacement method is applicable *only for* certain SR55-156 and SR55-180 models originally equipped with 24VDC fans. *These particular soft starters with original equipment 24VDC fans will require two SR55-FAN-6 fans kits, and both fans will need to be replaced.*

NOTE: Refer to the Replacement Method Selection Flowchart on [page 1](#) to determine which replacement method and instructions to use for your soft starter.

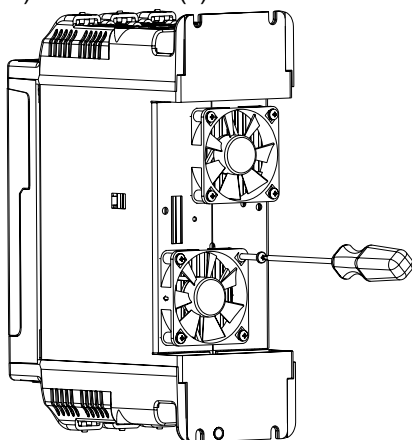


Important: For models SSR55-156 and SR55-180 with 12V fans, refer to Method #1.

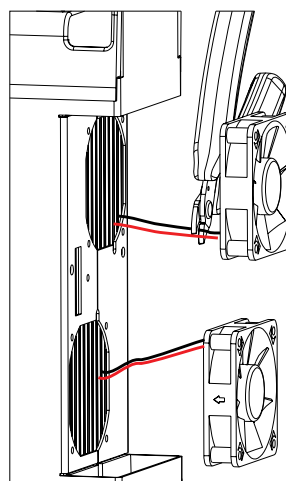
Instructions for **Fan Replacement Method #2**

Only for SR55-156 & SR55-180 Originally Equipped with 24VDC Fans

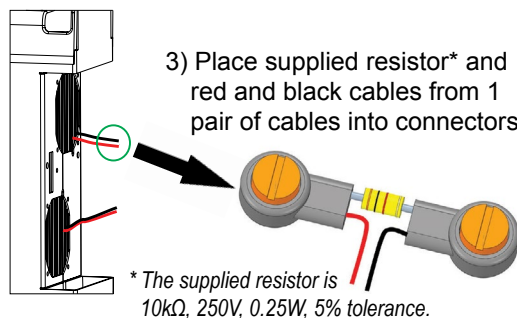
1) Unscrew fan(s)



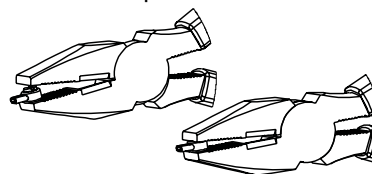
2) Cut wires as close to fan(s) as possible



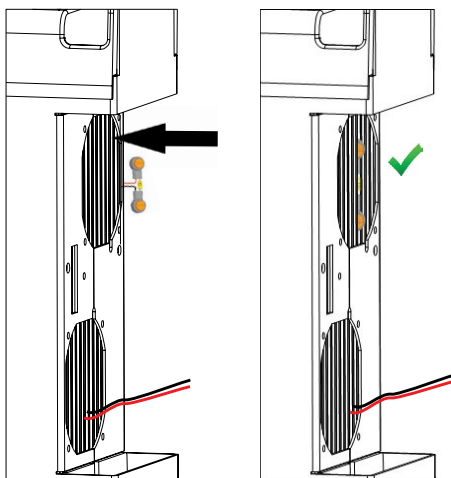
3) Place supplied resistor* and red and black cables from 1 pair of cables into connectors



4) Press both connectors shut with pliers



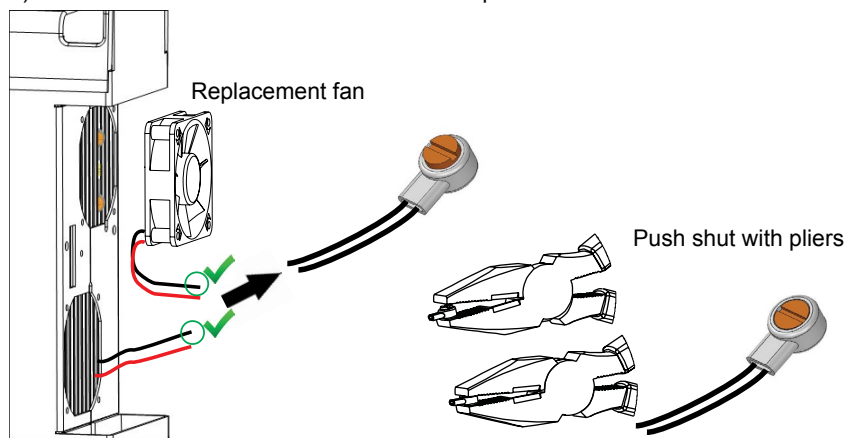
5) Push assembly between fins of heatshink until flush



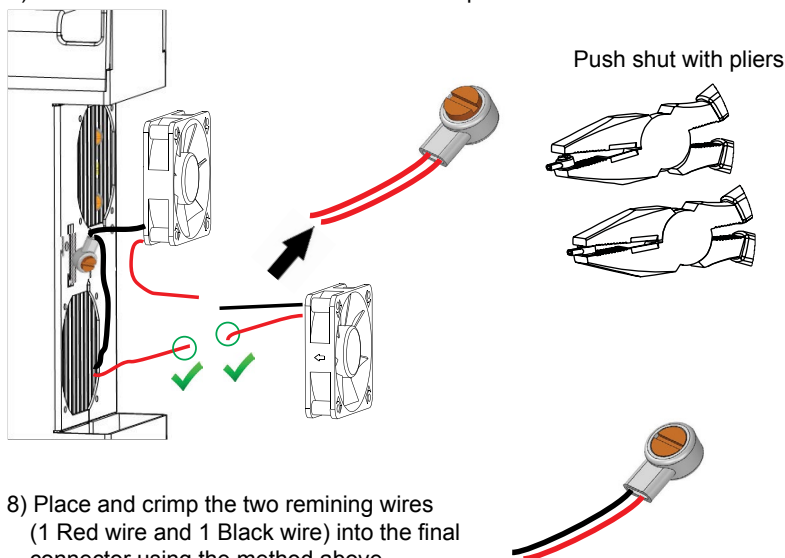
(instructions continued next page)

(fan replacement method #2 instructions continued from previous page)

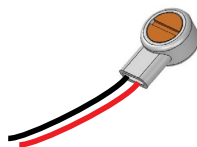
6) Select the Black wires as shown below and place into connector



7) Select the Red wires as shown below and place into connector

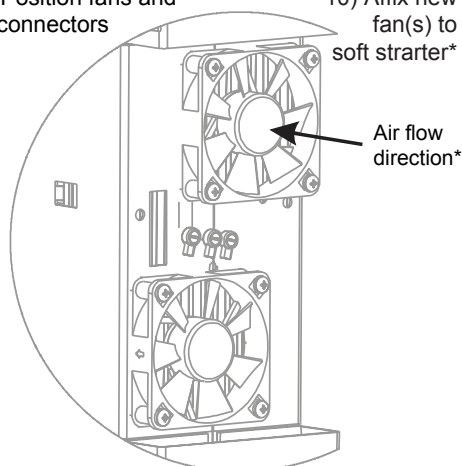


8) Place and crimp the two remaining wires (1 Red wire and 1 Black wire) into the final connector using the method above



9) Position fans and connectors

10) Affix new fan(s) to soft starter*



* When installing the new fan, ensure that airflow is into the soft starter. (Note the airflow directional arrow on the fan.)

Schematic representation of correct fan wiring

