



# WHAT'S UP WITH

# AUTOMATIONDIRECT.com

MARCH 2009

## IN THIS ISSUE

- Temperature Sensors
- New Wire Duct Styles
- C-more™ Remote Control
- CLICK™ The Almost Free PLC
- Wire Strip & Crimp Tools
- Photoelectric Sensors
- ZIPLink™ - 2nd Generation
- C-face Motors
- Distribution Blocks
- Pressure Sensors
- DC-to-DC Converters
- High Current Fuses
- & much more...

## OUR PRODUCT NEWS BULLETIN WILL HELP YOU SAVE MONEY

How is your company handling the economic challenge? AutomationDirect is fighting back with low prices, and an accelerated effort to launch more new cost-effective products. The products listed here are just the beginning - in the first half of 2009 alone, we plan to launch over 1,200 new part numbers. We're listening to our customers to determine which new products we should stock and which features will make the most difference to you in these challenging times. It's our goal to offer the best products, at the lowest price, ship them the same day, and support them with the best technical service in the industry. So take a look, see what we have to offer, and let us know how we can serve you better.

- The Entire AutomationDirect Team

1-800-633-0405 | [WWW.AUTOMATIONDIRECT.COM](http://WWW.AUTOMATIONDIRECT.COM)

## TEMPERATURE MEASUREMENT ADDED TO PROSENSE LINE



### Switches & Transmitters, RTD Probes / Thermowells

Monitoring and controlling temperature is essential in a variety of process control and industrial automation applications. The ProSense line now offers temperature switches, RTD probes, analog temperature transmitters and thermowells that provide accurate and reliable feedback in temperature control and monitoring applications.

[www.automationdirect.com/pressure-sensors](http://www.automationdirect.com/pressure-sensors)

**TSD25 Series Temperature switches offer high performance and simple setup for temperature monitoring and control. Operating temperature range is -13 to 284°F (-25 to 140°C)**

- Compact temperature switch with simple setup using mechanical adjustment dials
- Extremely durable housing with 316 stainless steel wetted parts
- No internal moving parts ensures long term stability without setpoint drift
- LEDs indicate power and function status
- Two normally open or complementary normally open/normally closed PNP DC switching outputs
- Optional plastic protective cover: PSD CV
- cULus, CE, RoHS

starting at  
**\$89.00**



**TTD25 Series Temperature Transmitters offers a compact measuring system providing an analog 4-20mA output over ranges of 0 to 100°C or 0 to 300°F**

- High accuracy 2 wire temperature transmitter
- 1000 ohm, Class A platinum RTD sensing element
- 4 20mA analog output signal
- Probes made of durable 316 stainless steel
- Temperature ranges of 0 100°C or 0 300°F
- cULus, CE, RoHS

starting at  
**\$125.00**



**RTD probes use 4-wire 100 ohm platinum, Class A RTD elements**

- 4 wire, 100 ohm platinum RTD sensing element
- DIN EN 60751, Class A TCR 0.00385 ohm/ohm/C
- 10 mm diameter probe made of durable 316 stainless steel
- Measuring temperature range of 40 to 302°F ( 40 to 150°C)
- Probe lengths of 160 mm, 260 mm, 360 mm, and 560 mm
- 4 pin M12 plug
- cULus, CE, RoHS

starting at  
**\$29.00**



**Thermowells allow RTD probes to be inserted and removed without stopping or shutting down the process**

- Thermowells for ProSense 10 mm diameter RTD probes
- All wetted parts are 316 stainless steel
- 600°F (315°C) temperature and 232 psi (16 bar) pressure rating
- CF10 50N fitting required to mount RTD probes in thermowell

starting at  
**\$28.00**



## MORE WIRE DUCT STYLES

Wire Duct starts at **\$11.00**

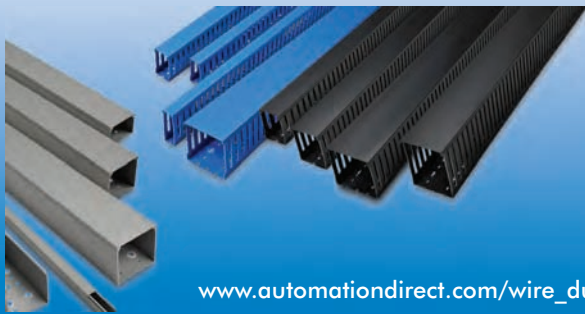
T1 series open-slot wire duct line now includes black and blue colors

- Blue (typically used for intrinsically safe applications) available in 24 sizes from 1" x 1" to 4" x 4"
- Black (typically used for network/telecom) available in 18 sizes from 1" x 4" to 4" x 5"
- White and gray available in more than 30 sizes up to 6" x 4"

Also now available is solid-wall (non-slotted) gray wire duct in 16 sizes from 1/2" x 5/8" to 4" x 4"

### All wire duct:

- Available in two-meter lengths
- Available in multi-piece packages or single pieces
- Comes with non-slip cover



[www.automationdirect.com/wire\\_duct](http://www.automationdirect.com/wire_duct)

## C-MORE REMOTE ACCESS

New feature **FREE** with all C-more full featured panels

A new remote access and control feature has been added to the C-more operator touch panel line, allowing authorized users to connect their PC to the C-more panel from anywhere via an Internet Web browser. The feature resides in the panel and requires no option modules.\*

- Monitor and control screen operations of the C-more panel as if touching the panel itself
- Browser based - no additional software to purchase
- Three access levels:
  - View Only
  - View and Screen Change only
  - Full Control

\* Requires firmware update to existing panels



[www.automationdirect.com/C-more](http://www.automationdirect.com/C-more)

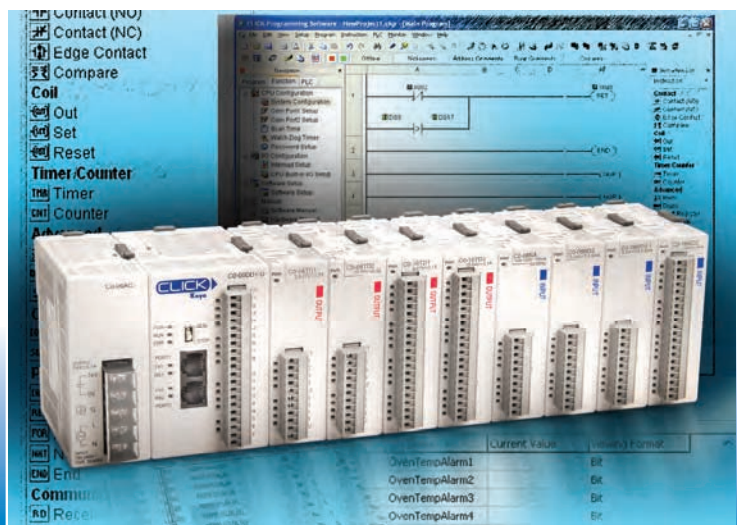
## CLICK™ - THE PRACTICALLY FREE PLC

CPU modules start at **\$69.00**

The CLICK™ PLC is a new generation of inexpensive PLCs designed to offer practical features in an easy-to-use, compact yet expandable design. Starting at \$69, this line of micro brick PLCs with stackable I/O modules and free programming software is suitable for first time users as well as experienced programmers.

By itself, a powered CLICK CPU unit can function as a complete PLC system. The CPU features eight inputs and six outputs, available in four combinations of built-in I/O types. For expansion, eleven option modules, starting at \$33, are available for flexible system configuration, up to 142 I/O. All Click CPUs support 8K steps of Flash EEPROM program memory and 8K words of data memory.

- 8 expansion modules can be added, up to 142 I/O
- Two 24 VDC power supplies available (0.5A & 1.3A)
- Two RS-232 RJ12 communication ports built in
  - Port 1 supports Modbus RTU protocol and can be used as the programming port
  - Port 2 is a general purpose port with user-configurable communication parameters that supports Modbus RTU and ASCII protocols
- FREE programming software (download)
- 21 simplified instructions (simple to learn, easy to use)
- Decimal addressing - no more octal headaches
- Perfect match for C-more Micro (shared cables, similar software)
- Made by Koyo™, manufacturer of DirectLOGIC PLCs



[www.CLICKPLCs.com](http://www.CLICKPLCs.com)

## WIRE STRIPPING & CRIMP TOOLS

Stripping tools priced at **\$65.25**

The new self-adjusting cut-and-strip tool features ultra-wide stripping capacity for wire:

- Stranded wires up to 8 AWG, solid wires up to 16 AWG
- Interchangeable stripping cassettes
- Wide range of insulation types, from PVC to PTFE
- Replacement blade and jaw inserts available

**New cable stripping tool:**

- Nine-position blade height adjustment provides fine adjustability and repeatability
- Cable diameters to 11 mm, insulation to 1 mm
- Replacement blades available

Cable stripping tool: **\$20.25**

Also available is a new crimp tool with die sets for various wire sizes and terminal types



[www.automationdirect.com/tools](http://www.automationdirect.com/tools)

## PHOTOELECTRIC SENSORS

starting at **\$33.00**

New 18mm photoelectric sensors expand line

- New NPN and PNP diffuse sensors feature one normally-open and one normally-closed output and have a sensing range up to 600 mm
- Through-beam emitter and receivers in up to 6-meter sensing ranges
- Axial or right angle optics
- Embedded cables or quick-disconnects



[www.automationdirect.com/photoelectric](http://www.automationdirect.com/photoelectric)

## PLC/DEVICE WIRING SYSTEM

Now **30%** Less than our previous low price

ZIPLink™ Pre-wired connection cables and modules cut your PLC or other device wiring time from hours down to minutes!

- Eliminate the tedious wiring of PLC I/O modules to terminal blocks
- ZIPLink modules and cables use half the space, at a fraction of the total cost of terminal blocks
- ZIPLinks are also available for GS, DuraPulse, and SureServo drive wiring solutions
- As a replacement for the legacy ZIPLink line, these next-generation components have an average price reduction of nearly 30%



[www.automationdirect.com/ziplinks](http://www.automationdirect.com/ziplinks)

## C-FACE MOTORS

starting at **\$130.00**

TC-Frame (C-Face) cast iron motors added to IronHorse lineup

- C-face motors up to 100 Hp (C-face kits to 300hp)
- High efficiency
- Reversible
- Inverter capable
- Premium grade quality
- Drive-end ball bearings or roller bearings available on all large horsepower electric motors



[www.automationdirect.com/ironhorse-motors](http://www.automationdirect.com/ironhorse-motors)

## DISTRIBUTION BLOCKS

### Finger-Safe Power Distribution Blocks

- Fully enclosed block for touch-safe isolation of live parts
- 200kA SCCR ratings with copper conductors
- 175A to 760A (600 VAC or VDC)

Finger Safe  
starting at  
**\$8.25**

### Open-Style Terminal Blocks

- 200kA SCCR ratings with Cu conductors
- 10k SCCR ratings with Al conductors
- Up to 760A ampere ratings (600 VAC or VDC)
- Ideal for UL508A panels
- Safety covers sold separately

Open-Style  
starting at  
**\$6.75**



[www.automationdirect.com/power-blocks](http://www.automationdirect.com/power-blocks)

## PRESSURE SENSORS

### ProSense™ pressure transmitters and switches for process applications

Switches  
start at  
**\$89.00**

#### PSD Series Switches

- Strain gauge technology
- Mechanical adjustment dials for setpoint and reset point
- Pressure range up to 5,800 psi (400 bar)

#### PDT Series Pressure and Vacuum Transmitters

- Pressures to 3,000 psi or 100 inches water column
- Vacuum models to -14.5 psi
- 4 to 20mA or 0-10 volts (pressure)
- 20 to 4mA or 10-0 volts (vacuum)

Transmitters  
start at  
**\$125.00**



[www.automationdirect.com/pressure-sensors](http://www.automationdirect.com/pressure-sensors)

## DC CONVERTERS

### RHINO DC to DC converters isolate and regulate 5, 12 and 24 VDC power

- Input ranges from 9.5 to 18 VDC, 18 to 75 VDC
- Tightly regulated outputs
- Output voltage adjustable
- DIN rail mountable
- Four models (PSP Series):
  - 18-75 VDC In - 5 VDC @ 5A Out
  - 18-75 VDC In - 12 VDC @ 2A Out
  - 18-75 VDC In - 24 VDC @ 1A Out
  - 9.5-18 VDC In - 24 VDC @ 1A Out

starting at  
**\$70.25**



[www.automationdirect.com/dc-converters](http://www.automationdirect.com/dc-converters)

## HIGH-CURRENT FUSES

### Now get class RK and J fuses in higher current ratings

- Class J dual-element time-delay fuses, now available up to 600A sizes, provide superior time-delay to pass harmless motor or trans former surges
- Class RK5 fuses available from 1A to 600A, ideal for time-delay motor circuits and building systems
- Class RK1 fuses now available up to 600A
- An assortment of fuse blocks has also been added for 100A to 600A applications

RK5-class  
starting at  
**\$29.25**  
Pack of 10

RK1-class  
starting at  
**\$34.25**  
Pack of 10

J-class  
starting at  
**\$89.00**  
Pack of 10



[www.automationdirect.com/fuses](http://www.automationdirect.com/fuses)

## CUTTING TOOLS

Complete line of RUKO cutting tools now available, including:

- Step drill bits
- Jobber length drill bits
- Machine thread taps
- Electrical knockout punches



10-pack drill bits starting at **\$4.00**

[www.automationdirect.com/tools](http://www.automationdirect.com/tools)

## IRONHORSE™ GEARBOXES

The IronHorse gearbox lineup includes right angle worm gearboxes with right-hand and dual output shafts. Four frame sizes and six gear ratios are available.

- Ratios: 5:1, 10:1, 15:1, 20:1, 40:1, & 60:1
- C-face mounting
- Nominal motor hp: 1/3 to 3
- Perfect match for Ironhorse and Marathon motors; mounting bases also available



starting at **\$130.00**

[www.automationdirect.com/worm-gearboxes](http://www.automationdirect.com/worm-gearboxes)

## CURRENT SENSORS UP TO 2KA

New AcuAMP fixed-core transducers are jumper selectable up to 2,000 amps. AC current switches are now available in both N.O. and N.C. solid state output configurations.

- 4-20mA output for transducers
- 5-year warranty
- DIN-rail adapter available



starting at **\$73.00**

[www.automationdirect.com/current-sensors](http://www.automationdirect.com/current-sensors)

## WIRE BY THE REEL

Electrical wire now available in 2,500-foot reels of MTW, TFFN and THHN wire types, in sizes from 4 to 18 gauge.

- New color: blue/white stripe (12-18 AWG)
- Check most current prices online (Copper prices subject to market fluctuations)



500' spools from **\$15.00**

2500' reels from **\$70.00**

[www.automationdirect.com/wire](http://www.automationdirect.com/wire)

## THINK & DO VERSION 8.0

Think & Do 8.0 integrates flowchart logic, a full-featured HMI package, easy SQL interface and a common database for HMI, logic, motion, vision and PID process control. Along with powerful drawing and animation tools, the new HMI provides real-time and historical trending and alarming.



Priced at **\$1,895**

[www.automationdirect.com/pc-control](http://www.automationdirect.com/pc-control)

## C-MORE MICRO 6" MODELS

C-more Micro-Graphic HMI line now includes 6-inch text/graphic panels with touch screen displays. Drivers for:

- AutomationDirect
- GE
- Allen Bradley
- Omron
- Mitsubishi
- Siemens
- Entivity and others



starting at **\$299.00**

[www.C-moreMicro.com](http://www.C-moreMicro.com)

## 12/24V TRANSFORMERS

Now offering 120/240 x 12/24 VAC control power transformers in addition to the existing 240/480 x 120/240 VAC Series.

- 50 to 1,500 VA
- Machine tool rated
- cUL Listed, CE Marked, & RoHS compliant
- Fuses and finger-safe covers available



starting at **\$30.00**

[www.automationdirect.com/control-transformers](http://www.automationdirect.com/control-transformers)

## GO GREEN WITH AC DRIVES

Save energy (and money) by using drives to control your AC motors. High quality and low prices make our GS1 series mini AC drives and GS2 series micro variable speed drives an incredible deal. DURApulse (GS3) sensorless vector drives handle applications up to 100 horsepower.



starting at **\$99.00**

[www.automationdirect.com/drives](http://www.automationdirect.com/drives)

## Live Web seminars are back!

Our digital media specialist and his team have totally revamped the way you view our Webinars. Now viewers can watch the speakers as they discuss and demonstrate the featured product. Find out more about the new format and check out the new [www.automationtalk.com](http://www.automationtalk.com) site to view pre recorded Web seminars and register for upcoming live ones. See the sidebar for the upcoming schedule.



## Online CLICK Configuration Tool

Similar to the configuration screen in the free downloadable CLICK software, this online tool allows visitors to configure a CLICK PLC and calculate power budget, I/O count, and total price. The best part: once you have the PLC configured, just click "add to cart" and complete your purchase at the store.

Visit [www.CLICKPLCs.com/config](http://www.CLICKPLCs.com/config) to give it a try...

## New Computer Based Training (CBT) PLC PID course

InterConnecting Automation's Doug Bell offers classes ranging from introductory PLC principles to advanced PLC training. Now Doug has teamed up with PID expert Dr. Cecil Smith to develop a self guided computer based training package which allows learning at your own pace. The Computer Based Training course covers the same topics and material used in the popular 3 day training class. Simply download and install the files and you're ready to begin.

To find out more about the Computer Based Training PLC PID Principles course or any of their other courses, check out [www.interconnectingautomation.com](http://www.interconnectingautomation.com).

## Recent Store Features

### Multi-User feature with shared shipping addresses

With the online Multi User feature, several employees can share your company account while having their own login, password, cart, and preference settings. Additionally, you can choose to share quotes, shipping addresses, and carts with each other to make the ordering process more flexible.

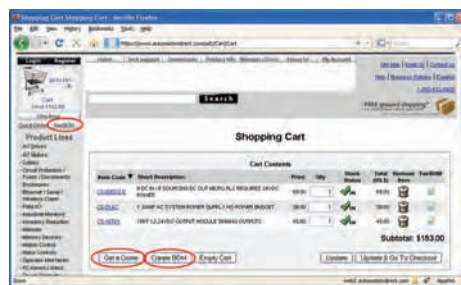
### Instant Quote

Simply enter the items into the CART as you normally would, or use our Quick Order feature to enter a list of part numbers. Update the cart and choose GET A QUOTE from the lower left corner of the shopping cart window. If you are logged in, your quote will be stored for easy ordering in the future. You can also see expected ship dates for any backordered items.

### Bill of Materials

This feature allows you to create, name, save, and order Bills of Materials (BOM). This feature is especially useful when you need to place frequent orders for identical "systems."

To use the new BOM feature: Log in to your account, choose FAV/BOM (on the left side below the cart), OR add the items to your cart first and then click "Create BOM" at bottom right of the shopping cart window.



### Get notified about updated software/firmware and new products

Sign up for the e mail notification service which will make you among the first to find out about new products, firmware updates, and new versions of software sold by AutomationDirect.

Visit <http://notify.automationdirect.com> to set your notification options.

## automationtalk

### Upcoming Webinars

#### C-MORE MICRO GRAPHIC PANELS

**March 25, 2009**  
**2:00pm EST**

In this 40 min session, you will learn about the options packed into this micro panel with features like: Touch screen models, multiple colored backgrounds, graphic objects and bitmaps, add on keypads, project simulator and FREE software.

#### AUTOMATIONDIRECT PLCS

**April 08, 2009**  
**2:00pm EST**

The entire line of our PLC's will be covered in this fast paced 40 minute session. We will give a brief history of PLC's, the various classifications, and discuss how PLC's are getting smaller while at the same time becoming easier to use, offering more features, while becoming less expensive. Customer examples will be discussed, and we will also explain our programming software lineup with a short demo included.

#### CLICK PLC

**April 22, 2009**  
**2:00pm EST**

We will cover all aspects of the new CLICK micro brick PLC including hardware features, specifications, expandability and installation. Toward the end of this 40 minute discussion, we will give a quick demo of the Free programming software, and then take questions from our audience.

**Sign up at**  
**[www.AutomationTalk.com](http://www.AutomationTalk.com)**

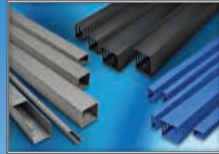
AUTOMATIONDIRECT  
3505 Hutchinson Rd.  
Cumming, GA 30040

# WHAT'S UP WITH AUTOMATIONDIRECT

## IN THIS ISSUE

Let AutomationDirect help you stretch your controls and maintenance budget!

This inaugural issue of our Product News Bulletin will get you up to date.



More Wire Duct Styles  
Page 3



A Practically Free PLC  
Page 3



Improved Photoelectric Sensors  
Page 4



New Temperature Sensors  
Page 2

**We're  
introducing  
NEW PRODUCTS  
every month,  
all at our  
EVERYDAY  
LOW PRICES**