

Easy HMI choices



Easy to configure, install and maintain, and easy on your budget too!

C-more 7 models to choose from **Operator Interface Touch Panels**

Starting at:
\$395
EA7-S6M-R

For just a little more than the cost of some pushbuttons and lights, **C-more** can help you provide better control of and get more information from any control system.

C-more micro **Micro Graphic Panels**



C-more Micro-Graphic panels are packed with features yet still priced for the tightest of budgets. With the addition of the larger 6-inch sizes, you can display even more text, graphics, or bitmaps to effectively communicate and display data to the operator. Four 3-inch models are available, including touch and non-touch versions, with standard or high-contrast screen backgrounds. Two 6-inch models are available (standard or high-contrast background), offering the same base features. Both units have touch screens and display STN monochrome graphics, however the configurable screen backgrounds let you use color to convey meaning.

3-inch Non-Touch
\$139
EA1-S3ML-N



3-inch Touch Panel
\$189
EA1-S3ML



6-inch micro
\$299
EA1-S6ML



6-inch micro
\$299
EA1-S6MLW

atlas 6 models to choose from **Industrial Grade LCD Monitors**

Starting at:
\$995
ATM1500

These new heavy duty PC monitors offer superb quality at a competitive price. Their compact size and very thin panel mounted depth (less than 2.75") allows them to be used in size restricted projects.



...and more inside... →

#1 Value in Automation: low prices, fast shipping, and superior service.

AUTOMATIONDIRECT.com
www.automationdirect.com 1-800-633-0405

C-more lets you see more

Choose reliability, ease of use and premium features, all at prices you won't get from the traditional automation suppliers. C-more touch panels are backed by a two-year warranty and our #1 rated technical service (as voted by readers of Control Design magazine in multiple product categories for the last seven years!).

C-more Touch Panels Offer:

- Analog resistive touch screen so there are no defined touch cells to limit screen design
- Symbol Factory™ 4,000 symbol library
- Popups, overlapping objects, bitmap animation
- Alarms, fill-in-the-blank event manager
- USB, Compact Flash ports for data logging
- Full-featured units include built-in Ethernet port with drivers (see Web for complete list)
- Serial protocols supported:
 - * All AutomationDirect PLCs
 - * Modbus RTU
 - * Allen-Bradley DF1 half/full duplex, PLC5 DF1
 - * GE 90/30 SNPX, Omron Hostlink, others
 - * Allen-Bradly Ethernet drivers
- Configuration software only \$129



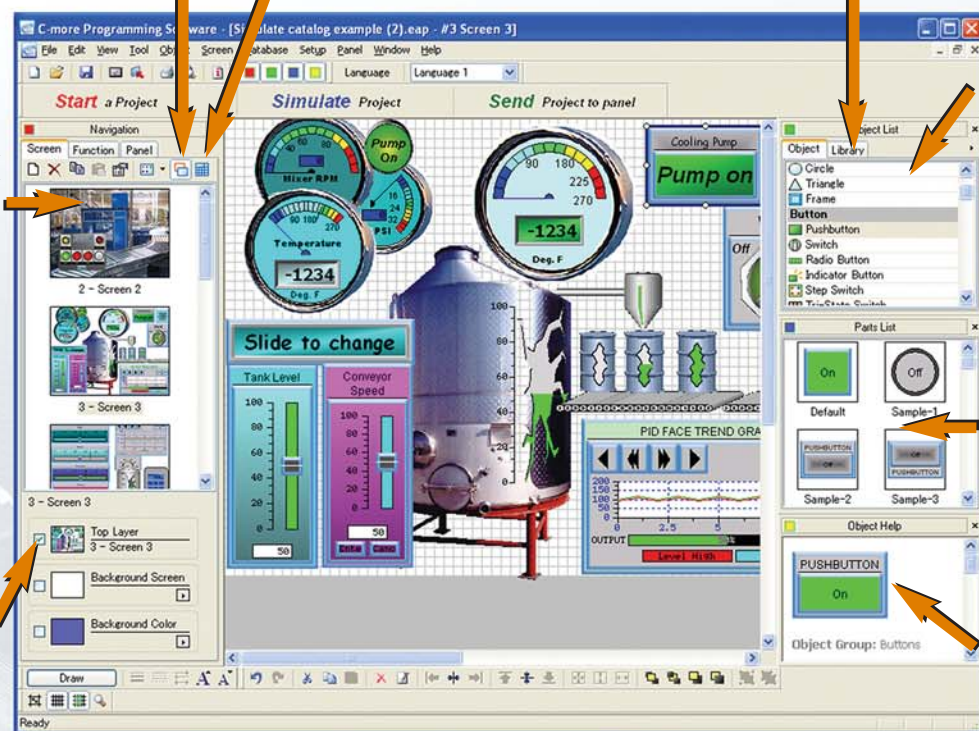
Save your screens in the Screen Library to use with other projects

Build your own keypads to use with numeric and text entry

Click on the Library tab to view libraries of personally stored objects, screens, sound bites, etc. This saves hours of work!

Thumbnail project preview window helps you organize multiscreen projects. And you can rearrange the screens using the screen library!

Select background screen, background color, and screen layering with a click!

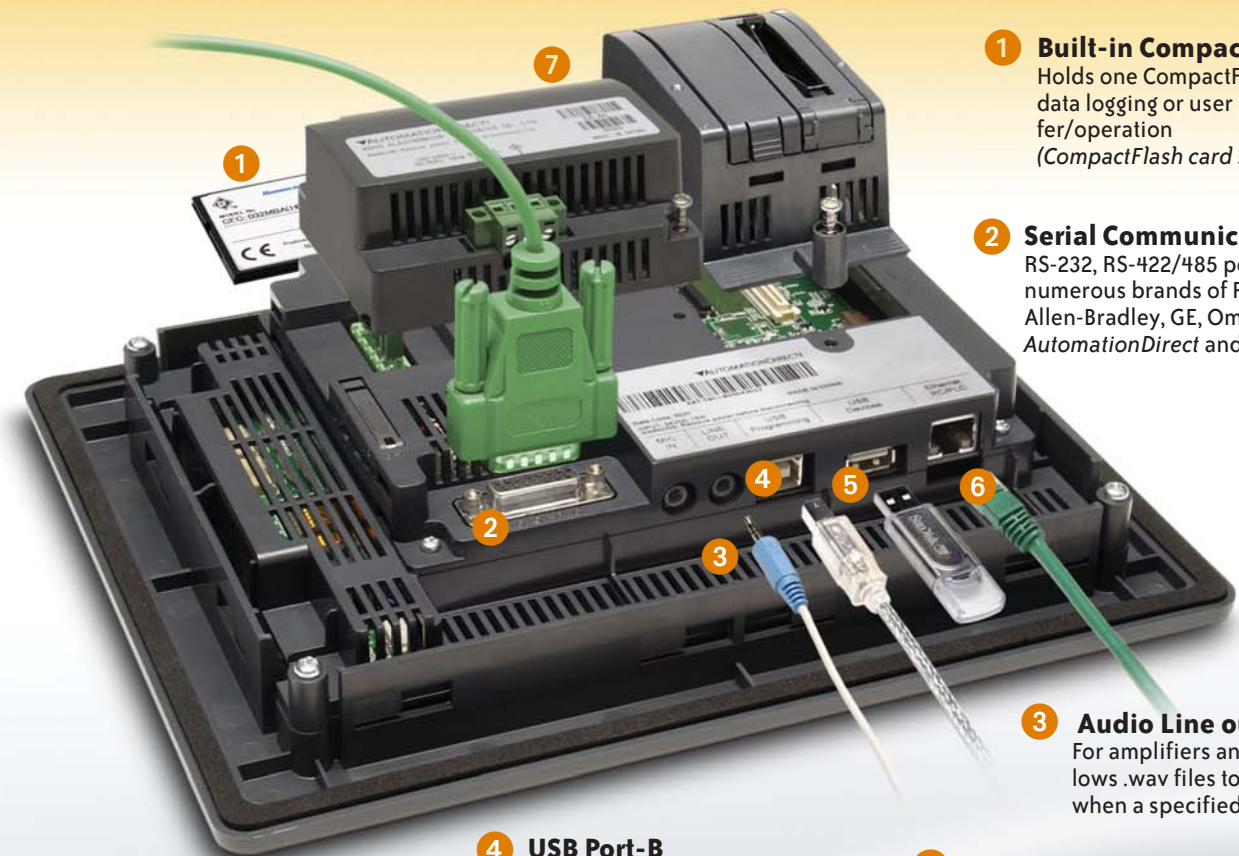


Scrolling object selection window lets you find the object you want fast. Just drag and drop it on the screen.

Scrolling parts list shows variations of the objects selected above. Just drag and drop on the screen.

Scrolling help window for each object type selected

Object Configuration Screen lets you quickly configure objects with fill-in-the-blank point-and-click ease



1 Built-in CompactFlash port*
Holds one CompactFlash card; used for data logging or user program transfer/operation (CompactFlash card sold separately)

2 Serial Communication port
RS-232, RS-422/485 port, connects to numerous brands of PLCs including Allen-Bradley, GE, Omron, Mitsubishi, AutomationDirect and more

3 Audio Line out*
For amplifiers and speakers; allows .wav files to be played when a specified event occurs

4 USB Port-B
Simple programming port connection to PC

5 USB Port-A
Accepts USB devices such as memory sticks, keyboards, barcode scanners, etc.

6 10/100 Base-T Ethernet*
Upload/download programs over network, connect to many brands of PLCs (A-B EtherNet/IP™, Modbus TCP/IP, DirectLOGIC ECOM), connect to standard Ethernet hubs, etc.

7 Expansion Assembly**
EA-EXP-OPT (\$9.00), holds one CompactFlash card (installed in CF card interface module EA-CF-IF (\$48.00)) and one future module

* Available only on full featured units

** Available only on full featured units and sold separately

Cost-conscious panels		Vivid TFT panels with 65,536 colors			10-inch TFT	12-inch TFT	15-inch TFT
\$395 ¹	\$595 ¹	\$775	\$975	\$1,575	\$1,875	\$2,275	
\$475 ²	\$675 ²	6-inch TFT	8-inch TFT				

¹ Does not include features requiring Ethernet, audio, CompactFlash (CF).
² Full-featured units.



Easy compatibility with more drivers

The most practical touch panel now supports several additional protocols for the Allen-Bradley® PLC brand. The Allen-Bradley Ethernet drivers allow simple connection of multiple panels and/or multiple Allen-Bradley PLCs. And ControlLogix® Ethernet/IP Tag Messaging support is a real time-saver that simplifies tag database migration. You can import the RSLogix™ 5000 L5K file directly, or with just a few clicks you can directly enter your ControlLogix®/ CompactLogix® tags from the PLC into C-more - no mapping or translation required!



Drivers for:

- ControlLogix®
- CompactLogix®
- MicroLogix™ 1100 Ethernet
- ENI Adapter for SLC Series
- FlexLogix
- SLC® 5/05 Ethernet™
- MicroLogix™

Tag-based Messaging

Import tags directly from the RSLogix 5000 L5K file

C-more software now supports direct insertion of ControlLogix, CompactLogix and FlexLogix tags from the PLC into C-more - no mapping or translations required.



It's a touch panel... at a text panel price

The C-more Micro is a graphical operator interface panel at a text panel price. Choose either the touch or non-touch version depending on your application and budget. Either way, you get advanced features at prices you might typically be paying for more limited text panels.



touch panel
\$189
EA1-S3ML

3-inch C-more Micro Panels

Four models are available, touch and non-touch, with either standard or high-contrast backgrounds, that offer the same base features. The panels with built-in touch capabilities expand application possibilities for only a few dollars more.

non-touch panel
\$139
EA1-S3ML-N

- Five backlight colors that can alert operators to conditions by changing or flashing the color of the screen
- Recipes
- Alarms
- Up to 999 screens (dependent on screen complexity)

- Five dual-purpose configurable function keys with individual LEDs
- FREE downloadable configuration software*



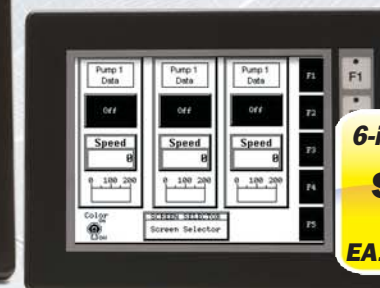
NEW 6-inch C-more Micro Panels

Two models are available, standard and high-contrast, that offer the same base features. Both are touch screen units that support portrait and landscape mounting positions.

6-inch micro
\$299
EA1-S6ML
(shown with optional \$99 keypad bezel)

5 function keys and indicators

You can configure the five function keys to change meaning on every screen. The function key labels are simple to customize to your application. Use the programmable LEDs for alarms or status indication.



6-inch micro
\$299
EA1-S6MLW

Data Entry and Control

For additional data entry and control, select from one of the optional keypad bezels available in a numeric with control buttons keypad or a simple control button keypad. **And they're plug and play, no software configuration required!**



Optional keypads

Need a hardware keypad for your Micro-Graphic panels? No problem! Just mount and go - no programming, no external power needed!

- For Portrait (vertical) mounted panels; 21-button keypad bezel with numeric keypad
- For Landscape (horizontal) mounted panels; 20-button keypad bezel with numeric keypad

For detailed specs and FREE demo software, visit: www.c-moreHMI.com

For full details, visit: www.c-moreMicro.com





Atlas™ Industrial Grade LCD Monitors

Choose from 6 models (starting at \$995)



Atlas™ Industrial LCD Monitors		
15"	17"	19"
\$995 ATM1500	\$1,395 ATM1700	\$1,695 ATM1900
\$1,195 ATM1500T	\$1,595 ATM1700T	\$1,895 ATM1900T

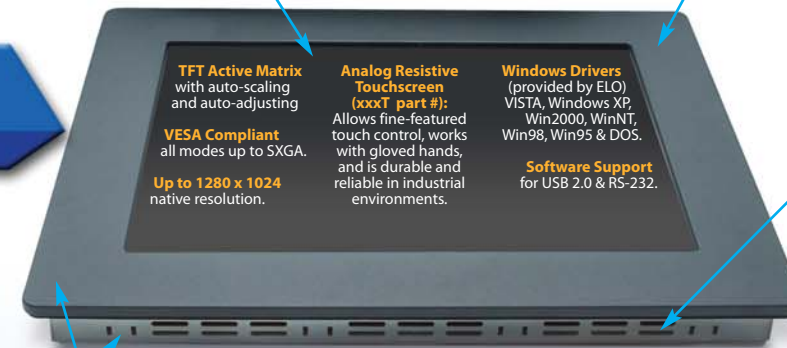
"T" models have a resistive touchscreen

UL Approved for Class I Division 2 Hazardous Locations
Integrated Power Supply



Impact Window:
0.125" Lexan™ (Polycarbonate) with clear hard coat

Bezel Construction:
0.25" machined aluminum with a recessed gasket pocket to keep moisture out; treated with an attractive dark gray textured powder coating



TFT Active Matrix with auto-scaling and auto-adjusting

Analog Resistive Touchscreen (xxxT part #): Allows fine-featured touch control, works with gloved hands, and is durable and reliable in industrial environments.

Windows Drivers (provided by ELO) VISTA, Windows XP, Win2000, WinNT, Win98, Win95 & DOS.

VESA Compliant all modes up to SXGA. Up to 1280 x 1024 native resolution.

Software Support for USB 2.0 & RS-232.

Ventilation Slots located on all sides to reduce heat build-up

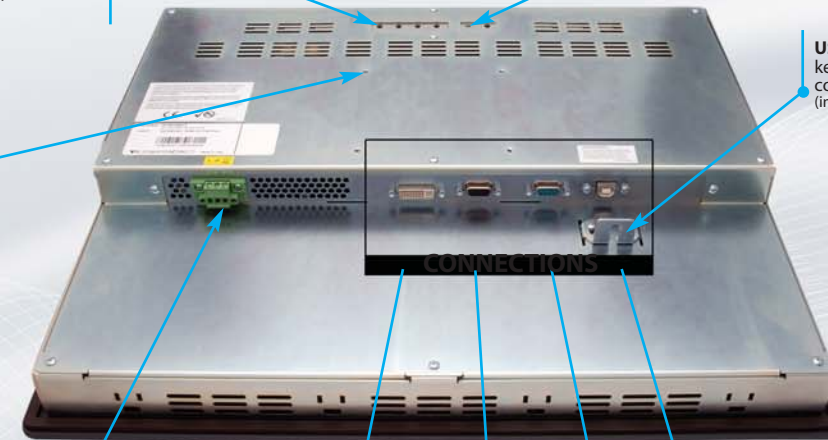
Simplified Installation with no studs: heavy duty steel chassis with a machined aluminum bezel (mounting clips included)

Screen Setup via rear keypad prevents tampering

"Auto-Adjust" Button on back panel keypad for easy display optimization

VESA Ready VESA arm mount ready (100mm)

USB Cable Bracket keeps the USB connection secured (included with monitor)



Built-in Power Supply with pluggable connector. Accepts 100-240 VAC, 50/60 Hz. Simplifies installation and reduces cost.

DVI
17" and 19" models only

VGA
All models

RS-232
touch models only

USB
touch models only

Overview

Atlas™ heavy duty PC monitors offer superb quality at a competitive price. Their compact size and very thin panel mounted depth (less than 2.75") allows them to be used in size restricted projects. And the Class I, Div 2 listing makes them ideal for installation in harsh environments found in many factory automation applications. All sizes are available in nontouch or with a 5-wire analog resistive touchscreens. There are currently three sizes, 15", 17", and 19", in this series.

The ATLAS series includes 15" XGA, 17" SXGA, and 19" SXGA LCD monitors. All models come standard with 100-240 VAC input power supplies and have NEMA 4/4X/12 panel-mountable front bezels. All units provide Analog Video (VGA) connections, and 5-wire analog resistive touchscreen "T" models supply connection via either USB or RS-232. The ATM1700 and ATM1900 include Digital Video Inputs (DVI) as well.

Features

- Available with or without touchscreen
- NEMA 4/4X/12 front bezel
- Accepts 100-240 VAC input power
- RS-232 and USB support for touchscreen models
- Simplified installation with no studs
- VESA compliant - all modes up to SXGA
- 2-year warranty
- UL 508 and UL 1604 listed for Hazardous Locations: Class I, Division 2, Groups A, B, C, D & Class II, Division 2, Groups F and G
- RoHS compliant



ATM1500
\$995

ATM1500T
with resistive touchscreen
\$1,195

- 15" color TFT LCD display
- XGA, 1024 x 768 native resolution
- 16 million colors
- 40,000 hrs backlight life
- Integral 100-240 VAC power supply
- Simplified installation with no studs
- Thin design - only 2.4" behind bezel
- Accepts analog 15-pin video input



ATM1700
\$1,395

ATM1700T
with resistive touchscreen
\$1,595

- 17" color TFT LCD display
- SXGA, 1280 x 1024 native resolution
- 16 million colors
- 50,000 hrs backlight life
- Integral 100-240 VAC power supply
- Simplified installation with no studs
- Thin design - only 2.6" behind bezel
- (DVI) Digital Video Inputs
- Accepts analog 15-pin video input



ATM1900
\$1,695

ATM1900T
with resistive touchscreen
\$1,895

- 19" color TFT LCD display
- SXGA, 1280 x 1024 native resolution
- 16 million colors
- 40,000 hrs backlight life
- Integral 100-240 VAC power supply
- Simplified installation with no studs
- Thin design - only 2.7" behind bezel
- (DVI) Digital Video Inputs
- Accepts analog 15-pin video input

Accessories

We've got the cables, clamps, and connectors - both spare and replacement parts - and all at great direct prices. Go online for all the details.

For the latest features and specifications, visit:
www.automationdirect.com/monitors



#1 Value in Automation

Quality • Service • Price

It all adds up to the
best value in the industry.



VOTED #1
Best in SERVICE
7 YEARS

2001-2002-2003
2004-2005-2006-2007

Consistent, honest, and knowledgeable service is the backbone of our company

Since our beginning in 1994 (as *PLC Direct*), low prices, fast delivery, and superior service to our customers has been our promise. For the past 7 years, we have been voted tops for service in various product categories by the readers of several industrial magazines.

Over 6,500 quality products

We carry private-labeled and brand name products and we put them up against some of the biggest names in the industry. See product sections for feature comparisons.

Buying from us will save you up to 50%.

With our direct business model and focus on efficiency, AutomationDirect has the lowest overhead in the industry. **That's why we can offer high-quality products at lower prices.** Check out our prices – look inside and see for yourself.

Easy ordering will save you time.

Orders can be placed **online, by phone, or fax.** We accept approved purchase orders, major credit cards and I-checks.

You get your purchase super-fast.

Place your **order as late as 6 p.m. EST** and we will ship it out the same day (for in-stock items, see Terms and Conditions for exclusions and full details.)

FREE #1-rated tech support is included.

For **seven years straight** the FREE support you get when buying our products has been **rated #1 by several industrial magazines reader polls.** Also, **99% percent of customers** surveyed say they **would recommend us to someone else.** Over **90% of customers** surveyed say that **our service is better than the service they've been receiving from other automation suppliers** and describe our service as the best in the industry.

We guarantee it.

We offer a **30-day money-back guarantee on almost every stock product we sell,** including our software. (See Terms and Conditions for exclusions and full details.)

 **AUTOMATIONDIRECT**.com

3505 Hutchinson Rd., Cumming GA 30040

www.automationdirect.com

1-800-633-0405

Copyright 2008, *AutomationDirect.com* Incorporated/All Rights Reserved

