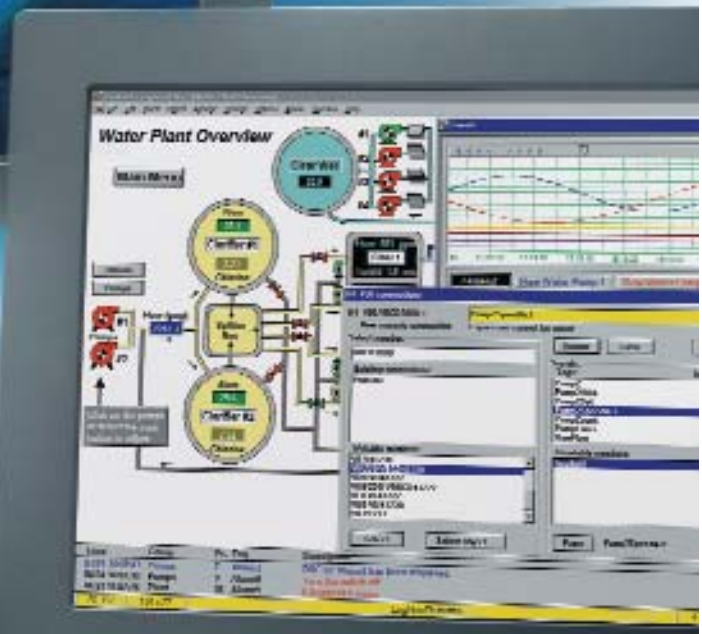


Introducing
ATLAS™ Industrial Grade LCD Monitors
starting at **\$995!**



**NEW
Product!**



ATLAS™ Industrial Grade LCD Monitors



New Product!



UL Approved for Class I Division 2 Hazardous Locations Integrated Power Supply



Features

- Optional non-touch or 5-wire analog resistive touch screen available
- **UL 508 and UL 1604 listed for Hazardous Locations: Class I, Division 2, Groups A, B, C, D and Class II, Division 2, Groups F and G**
- NEMA 4/4X/12 front bezel
- RoHS compliant
- Integral 100-240 VAC power supply
- RS-232 and USB support for touch screen models
- Simplified installation with no studs
- VESA compliant - all modes up to SXGA, 16 million colors
- 2-year warranty

Introducing AutomationDirect's ATLAS family

These new heavy duty PC monitors offer superb quality at a competitive price. Their compact size and very thin panel mounted depth (less than 2.75") allows them to be used in size restricted projects. And the class I, Div 2 listing makes them ideal for installation in harsh environments found in many factory automation applications. All sizes are available in non-touch or with a 5-wire analog resistive touchscreens. There are currently three sizes, 15", 17", and 19", in this series.

The ATLAS series includes 15" XGA, 17" SXGA, and 19" SXGA LCD monitors. All models come standard with 100-240 VAC input power supplies and have NEMA 4/4X/12 panel-mountable front bezels. All units provide Analog Video (VGA) connections, and 5-wire analog resistive touchscreen "T" models supply connection via either USB or RS-232. The ATM1700 and ATM1900 include Digital Video Inputs (DVI) as well. The entire series is UL/cUL listed, complies with European CE and RoHS requirements, and is UL approved for Class I and II, Division 2 hazardous locations.

ATM-1500
\$995

ATM-1500T (touch)
\$1,195



ATM1500 - 15"

- 15" color TFT LCD display
- XGA, 1024 x 768 native resolution
- 16 million colors
- 40,000 hrs backlight life
- Integral 100-240 VAC power supply
- Simplified installation with no studs
- Thin design - only 2.4" behind bezel
- (DVI) Digital Video Inputs
- Accepts analog 15-pin video input

ATM-1700
\$1,395

ATM-1700T (touch)
\$1,595



ATM1700 - 17"

- 17" color TFT LCD display
- SXGA, 1280 x 1024 native resolution
- 16 million colors
- 50,000 hrs backlight life
- Integral 100-240 VAC power supply
- Simplified installation with no studs
- Thin design - only 2.6" behind bezel
- (DVI) Digital Video Inputs
- Accepts analog 15-pin video input

ATM-1900
\$1,695

ATM-1900T (touch)
\$1,895



ATM1900 - 19"

- 19" color TFT LCD display
- SXGA, 1280 x 1024 native resolution
- 16 million colors
- 40,000 hrs backlight life
- Integral 100-240 VAC power supply
- Simplified installation with no studs
- Thin design - only 2.7" behind bezel
- Accepts analog 15-pin video input

Quality Industrial Monitors at a Great Price!



15" ATLAS \$995 ATM-1500	17" ATLAS \$1,395 ATM-1700	19" ATLAS \$1,695 ATM-1900
\$1,195 ATM-1500T	\$1,595 ATM-1700T	\$1,895 ATM-1900T

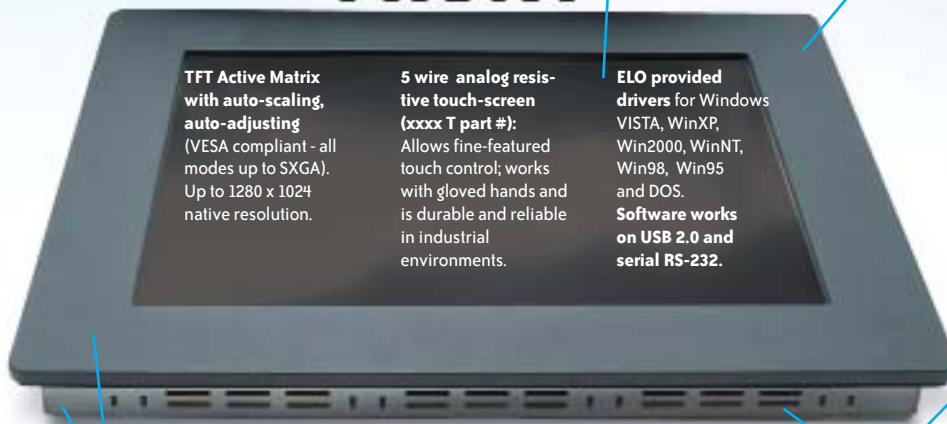
"T" models have resistive touchscreens

New Product!

**UL, cUL, CE approved
NEMA 4/4X/12, IP65
FCC 47 CFR, Part 15,
Class A Bezel
Construction**

Bezel Construction:
0.25" Machined Aluminum with a recessed to keep moisture and power coated treated with an attractive dark gray textured powder coating

FRONT



TFT Active Matrix with auto-scaling, auto-adjusting (VESA compliant - all modes up to SXGA). Up to 1280 x 1024 native resolution.

5 wire analog resistive touch-screen (xxxx T part #): Allows fine-featured touch control; works with gloved hands and is durable and reliable in industrial environments.

Impact Window:
.125" Lexan (Polycarbonate) with a clear hardcoat

ELO provided drivers for Windows VISTA, WinXP, Win2000, WinNT, Win98, Win95 and DOS.
Software works on USB 2.0 and serial RS-232.

Simplified installation with no studs, housed in a heavy duty steel chassis with a powder coated machined aluminum bezel (mounting clips included)

Screen setup via rear keypad prevents tampering

"Auto-adjust" button on back panel keypad for easy display optimization

Ventilation located on all sides to reduce heat build-up 0 to 50 °C (32 to 122 °F)

VESA Ready
VESA arm mount ready (100mm)

The **16-gauge RoHS compliant CRS steel chassis** provides corrosion resistance and extra strength.

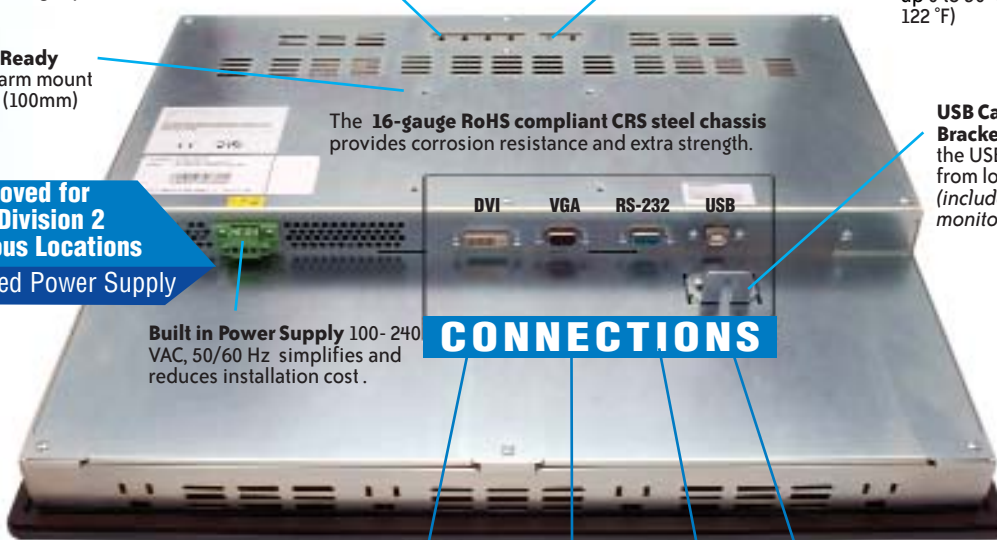
USB Cable Bracket keeps the USB cable from loosening (included with monitor)

UL Approved for Class I Division 2 Hazardous Locations

Integrated Power Supply

Built in Power Supply 100-240 VAC, 50/60 Hz simplifies and reduces installation cost.

CONNECTIONS



SIDE

Compact size and very thin panel mount depth of less than 2.75" saves enclosure space
Recessed cable connections conserve panel space

BACK



DVI
On 17" and 19" monitors only

VGA

RS-232
Touch models only

USB
Touch models only

Full selection of cables in various length is located page 11-15

For detailed specifications, refer to the **Specification Charts** in the **ATLAS Technical** section of the **Catalog**