

CLICK Programming Software

FREE Software!

CLICK programming software can be downloaded at no charge.

The CLICK programming software is designed to be a user-friendly application, and the tools, layout, and software interaction provide ease-of-use and quick learning.

The simple operation of this software allows users to quickly develop a ladder logic program. The online help file provides information that will help you get acquainted with the software quickly.

PC Requirements

CLICK PLC Windows-based programming software works with Windows® 2000 Service Pack 4, XP Home or Professional, Vista (32 bit only) or Windows 7 (32 bit only). These are the minimum system requirements:

- Personal Computer with a 333 MHz or higher processor (CPU) clock speed recommended; Intel Pentium/Celeron family or AMD K6/Athlon/Duron family, or compatible processor recommended
- SVGA 800x600 pixels resolution. (1024x768 pixels resolution recommended)
- 150MB free hard-disk space
- 128MB free Ram (512MB recommended)
- CD-ROM or DVD drive for installing software from the CD
- 9-pin serial port or USB port for project transfer to PLC (USB port communications also requires USB-to-serial converter)

C0-PGMSW FREE

CLICK PLC Programming Software

Free download available from the Web includes the manual in pdf format. Cable sold separately.

Windows2000/XP(Home/Pro)/Vista/Windows 7 required.

The CLICK Programming Software can be downloaded free at the [AutomationDirect](http://www.automationdirect.com) Web site:

www.support.automationdirect.com/downloads.html



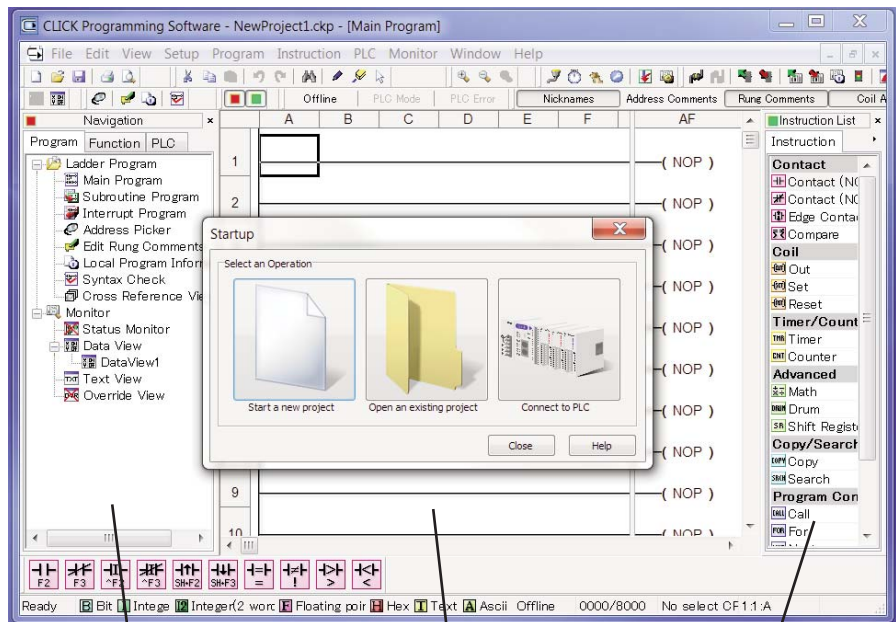
NOTE: CLICK PLCs cannot be programmed using *DirectSOFT5* programming software, which is used to program our *DirectLOGIC* PLCs; you must use the CLICK programming software, C0-PGMSW.



NOTE: When using Standard CPUs, you must use CLICK programming software version V1.20 or later.
When using Analog CPUs, you must use CLICK programming software version V1.12 or later.

Main window

The Main Window is displayed when the program opens. It is divided into Menus, Toolbars, and Windows that work together to make project development as simple as possible.



Navigation Window

Ladder Edit Window

Instruction List Window

CLICK Programming Software

Instructions

The easy-to-use instructions are described in the CLICK programming software online help file.

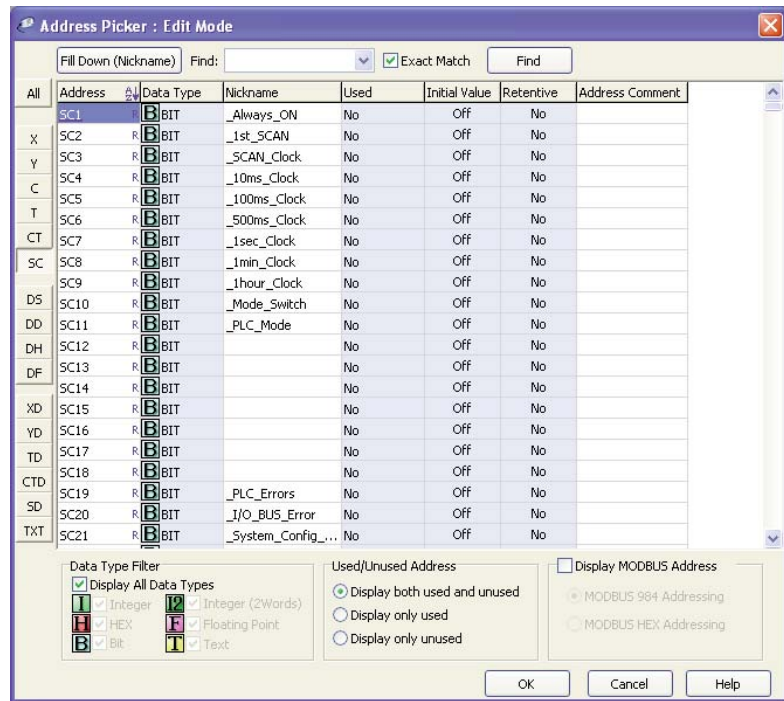
Powerful Features!

CLICK programming software has amazingly powerful features for a free software product, such as

- Address picker
- Separate subroutine programs
- Separate interrupt programs
- Color rung comment feature
- Project loader
- Documentation is stored within the PLC memory

Address Picker

The Address Picker is a powerful multi-function memory table which can be used to assign nicknames, create address comments, and establish initial values for specific memory locations. It can assign specific memory locations to be retentive during power outages. The Address Picker also has powerful tools for sorting the memory table and making it easier to use.

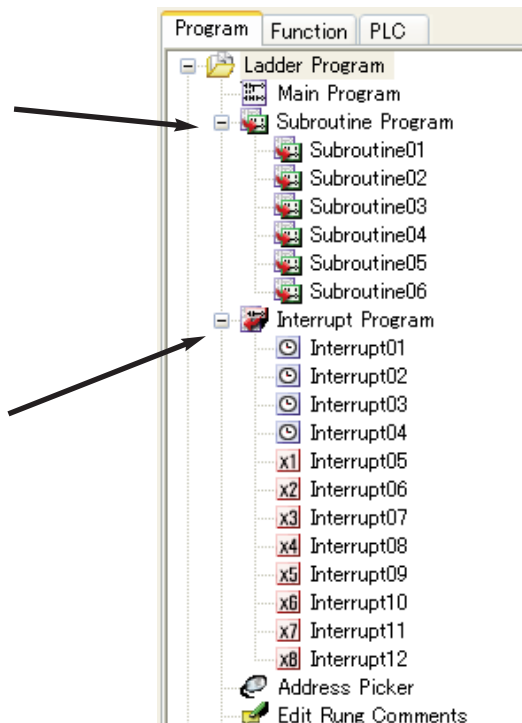


Subroutine Programs

Subroutine programs can be created and named to isolate a body of program code that is run selectively. You can run up to 986 subroutine programs.

Interrupt Programs

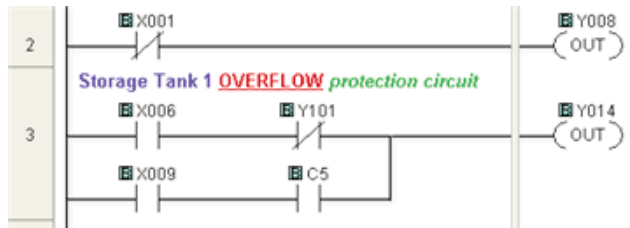
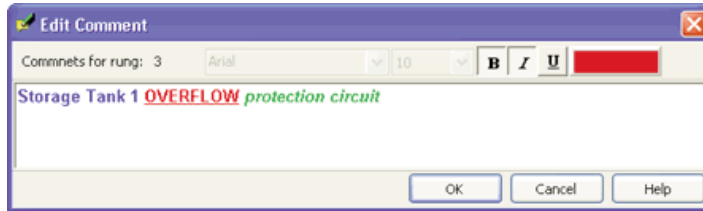
Interrupt programs are created and named. The Basic and Standard CPU modules support up to 12 interrupt programs. The Analog CPU modules support up to 8 interrupt programs.



CLICK Programming Software

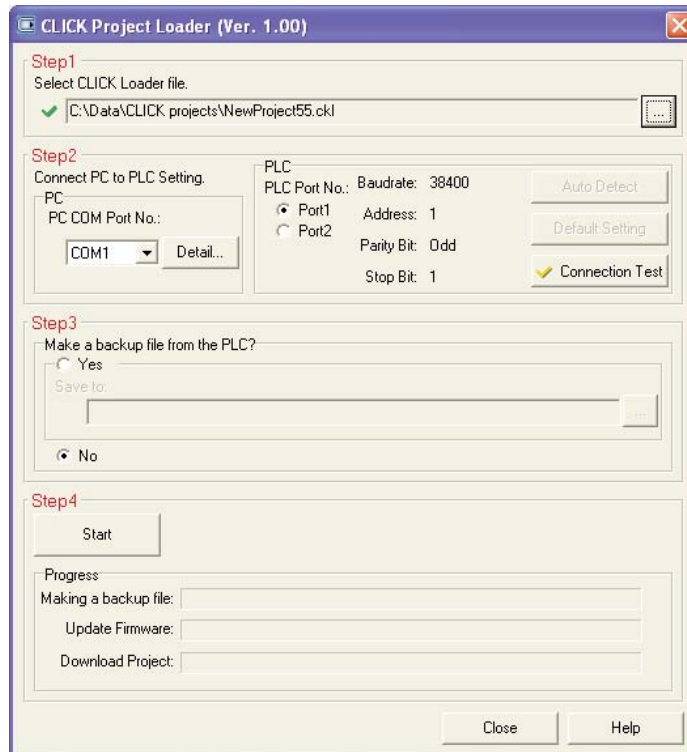
Color Rung Comment

Easily create and edit rung comments with colors and three text styles. Comments are stored in the PLC memory for future reference.



Project Loader

The CLICK programming software can export the CLICK project in an encrypted format. The exported file can be sent to the end user. Then the end user can download the file into the CLICK PLC with the tool called Project Loader.



NOTE: PROJECT LOADER IS A SEPARATE PROGRAM FROM THE CLICK PROGRAMMING SOFTWARE, BUT IT IS INSTALLED ON THE PC WHEN THE CLICK PROGRAMMING SOFTWARE IS INSTALLED.