

GH Series Contactor/Overload Selection Guide

Step 1 Select your motor's FLA (Full Load Amperage) from column A.

Step 2 Follow across to column B to find your contactor size. Check the maximum amperage rating for that contactor. Ranges overlap and you may have to go to the next larger size.

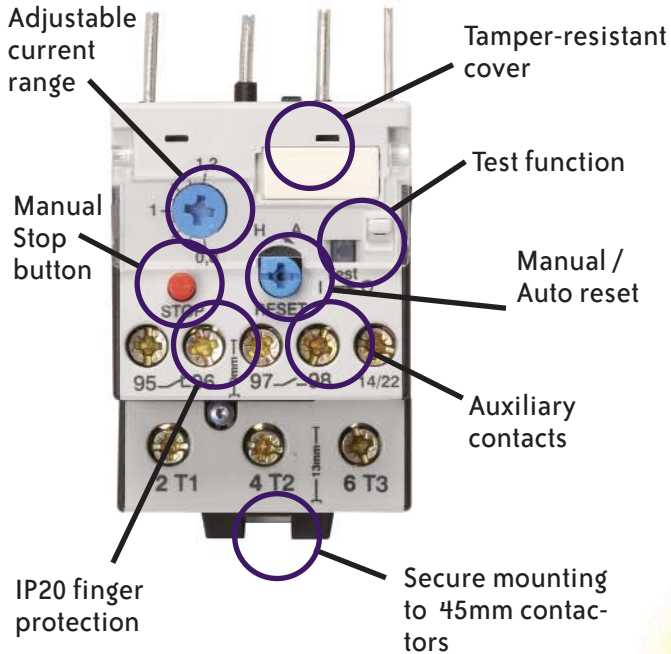
Step 3 After selecting your contactor, follow across to Column C to find your overload relay model number.

Step 4 Order the contactor and overload relay, any desired auxiliary contacts, then assemble and install your motor starter.

Motor Contactor and Overload Relay Selection Guide (When Motor FLA is Known)				
A	B	C	Price	IEC Contactor Frame Size
Current Range Motor FLA	Contactor Model	Overload Relay		
0.4 to 0.6A	GH15BN up to maximum FLA of 9A	RTD32-60	<--->	45 mm frame size
0.6 to 0.9A		RTD32-90	<--->	
0.8 to 1.2A		RTD32-120	<--->	
1.2 to 1.8A		RTD32-180	<--->	
1.8 to 2.7A		RTD32-270	<--->	
2.7 to 4.0A		RTD32-400	<--->	
4.0 to 6.0A		RTD32-600	<--->	
6.0 to 9.0A		RTD32-900	<--->	
8.0 to 11.0A	GH15CN up to 12A FLA	RTD32-1100	<--->	
10.0 to 14.0A		RTD32-1400	<--->	
10.0 to 14.0A	GH15DN up to 16A FLA	RTD32-1400	<--->	
13.0 to 18.0A		RTD32-1800	<--->	
13.0 to 18.0A	GH15ET up to 25A FLA	RTD32-1800	<--->	
17.0 to 24.0A		RTD32-2400	<--->	
22.0 to 32.0A		RTD32-3200	<--->	
22.0 to 32.0A	GH15FT up to 32A FLA	RTD32-3200	<--->	
20.0 to 28.0A	GH15GT up to 40A FLA	RTD65-2800	<--->	60 mm frame size
28.0 to 42.0A		RTD65-4200	<--->	
28.0 to 42.0A	GH15HT up to 50A FLA	RTD65-4200	<--->	
40.0 to 52.0A		RTD65-5200	<--->	
40.0 to 52.0A	GH15JT up to 63A FLA	RTD65-5200	<--->	
52.0 to 65.0A		RTD65-6500	<--->	

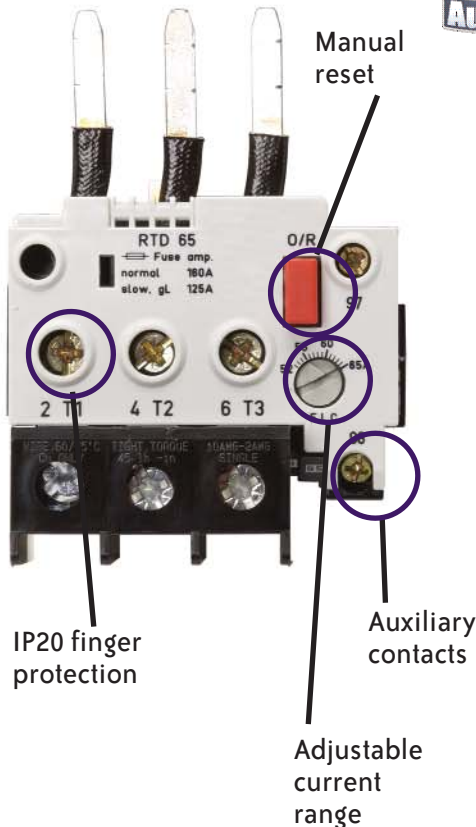
Adjustable Overloads for GH Series Contactors

RTD32 for 45 mm Contactors



Adjustable overload relays for 45 mm and 60 mm contactors

RTD65 for 60 mm Contactors



The RTD32 and RTD65 adjustable motor overload relays are designed to attach directly to the GH Series 45 mm and 60 mm contactors. By combining the contactor with an overload relay, you have a motor starter solution at a fraction of the cost of the competition.

RTD65 overload relay for 60 mm contactors

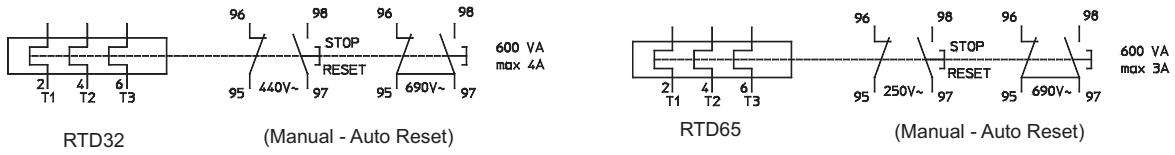
- Four sizes for motor currents from 20 to 65 amps
- Units come with N.O. and N.C. auxiliary contacts
- Mount directly to 60 mm contactors
- Class 10 trip curve
- UL/CUL listed, CE

RTD32 overload relay for 45 mm contactors

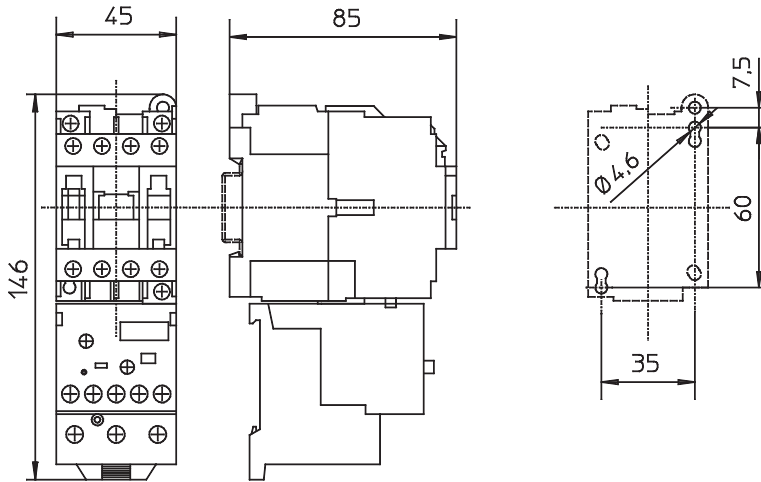
- 16 sizes for motor currents from 0.4 to 32 amps
- Units come with N.O. and N.C. auxiliary contacts
- Mount directly to 45 mm contactors
- Class 10 trip curve
- UL/CUL listed, CE

Overload Dimensions for GH Series Contactors

IEC terminal designations

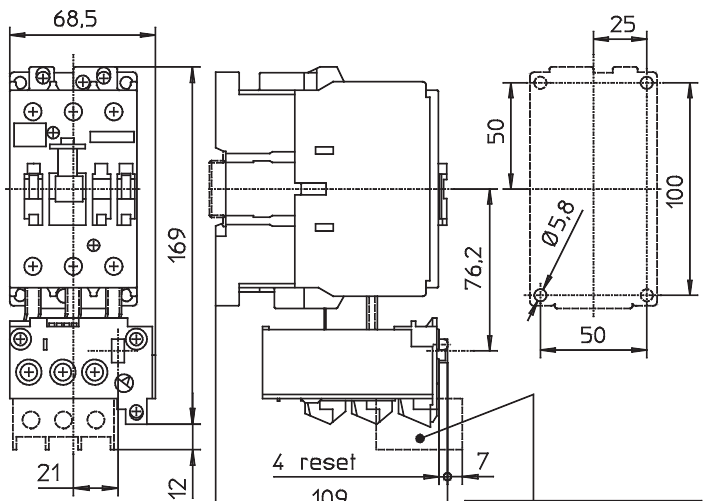


45 mm contactor and overload dimensions (mm)



GH15BN...FT + RTD32

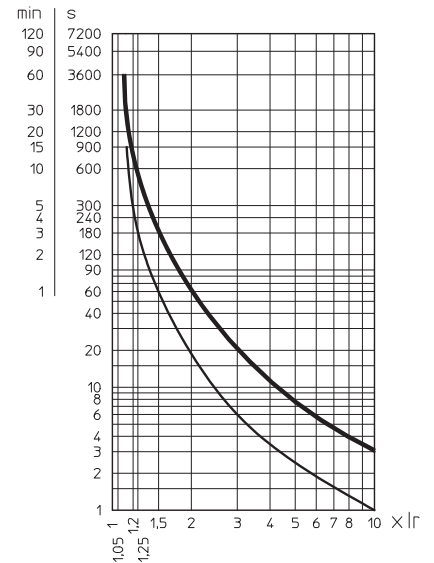
60 mm contactor and overload dimensions (mm)



GH15GT ... JT + RTD65

Supplementary terminal block for 40-52A, 52-65A range only

Trip curve for 45 and 60 mm overloads



Note: Curves show tripping time (average value) versus multiples of setting current I_r .

- Tripping starting from cold
- - - Tripping starting from hot