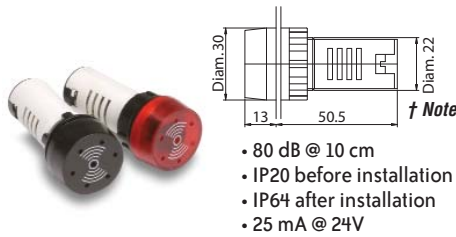


# 22mm Pilot Devices

## Audible annunciator



- 80 dB @ 10 cm
- IP20 before installation
- IP64 after installation
- 25 mA @ 24V

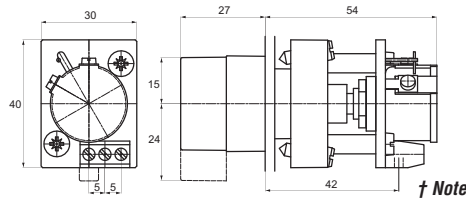
Part Number	Description	Color	Price
<b>ECX2070-24</b>	22 mm, 25 mA audible (80dB at 10 cm) buzzer annunciator. 24VAC/DC	Black	<--->
<b>ECX2070-127</b>	22 mm, 25 mA audible (80dB at 10 cm) buzzer annunciator. 120VAC/DC	Black	<--->
<b>ECX2071-24R</b>	22 mm, 25 mA audible (80dB at 10 cm) buzzer annunciator with non-replaceable LED indicator. 24VAC/DC	Red	<--->
<b>ECX2071-127R</b>	22 mm, 25 mA audible (80dB at 10 cm) buzzer annunciator with non-replaceable LED indicator. 120VAC/DC	Red	<--->

## 22 mm potentiometer



• IP65

Part Number	Description	Quantity	Price
<b>ECX2300-5K</b>	22 mm potentiometer with 5k $\Omega$ resistance, $\pm 10\%$ . Nominal voltage: 250V. Rated dissipation: 2W at 25°C. Temperature range -40°C to 70°C. Black handle	pkg. of 1	<--->
<b>ECX2300-10K</b>	22 mm potentiometer with 10k $\Omega$ resistance, $\pm 10\%$ . Nominal voltage: 250V. Rated dissipation: 2W at 25°C. Temperature range -40°C to 70°C. Black handle	pkg. of 1	<--->
<b>ECX2640</b>	22 mm legend plate for potentiometer with 0% to 100% marking	pkg. of 1	<--->



† Note

# 22 mm Pilot Device Accessories

## Replacement incandescent bulbs



Part Number	Rating	Description	Quantity	Price
<b>ECX1900-5</b>	6V, 1.2 watts	6V replacement bulb for 22 mm metal and C-H switches and indicators. Miniature bayonet base T31/4	pkg. of 5 bulbs	<--->
<b>ECX1902-5</b>	24V@ 80mA 2 watts	24V replacement bulb for 22 mm metal and C-H switches and indicators. Miniature bayonet base T31/4	pkg. of 5 bulbs	<--->
<b>ECX1904-5</b>	130V@20mA 2.6 watts	120V replacement bulb for 22 mm metal and C-H switches and indicators. Miniature bayonet base T31/4	pkg. of 5 bulbs	<--->

Note: Bulb removal tool available. Order part number HT8LAMP TOOL.

## Replacement LED bulbs



Part Number	Color	Rating	Description	Quantity	Price
<b>ECX1911-2</b>	Red	24V@26mA 0.6 watts	LED replacement lamp for miniature bayonet bases	pkg. of 2 LED lamps	<--->
<b>ECX1912-2</b>	Green				<--->
<b>ECX1913-2</b>	Yellow				<--->
<b>ECX1914-2</b>	Blue				<--->
<b>ECX1915-2</b>	White				<--->
<b>ECX1921-2</b>	Red	120V@5mA 0.6 watts	Works with 22 mm metal and Cutler-Hammer switches and indicators, but illumination will not be as even when used with 22mm indicators		<--->
<b>ECX1922-2</b>	Green				<--->
<b>ECX1923-2</b>	Yellow				<--->
<b>ECX1924-2</b>	Blue				<--->
<b>ECX1925-2</b>	White				<--->

Note: LED modules have very low current draw and should not be used with triac output devices like PLC triac output modules. It is recommended that dry contact outputs be used to switch 120 volt AC modules.

## Hole plug



Part Number	Description	Color	Price
<b>ECX1490</b>	Plastic hole plug for 22.5mm openings in panels and enclosures; supplied with O-ring and mounting screw. Two plugs per package.	Black	<--->

† Note: All dimensions are in millimeters. 25.4mm = 1 inch.  
For example, 30 mm in inches = 30/25.4 = 1.181 inches.