

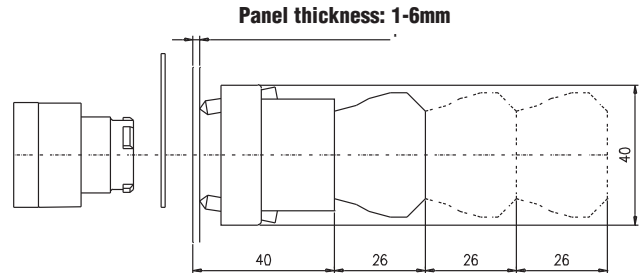
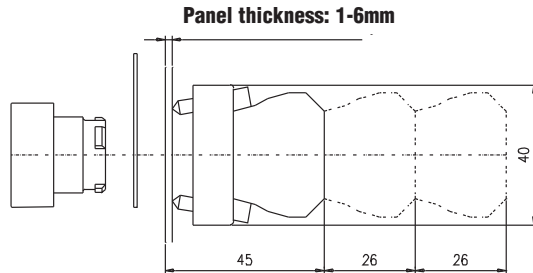
22 mm Metal Pilot Devices Specifications

Assembly information

These pushbuttons and indicator lights are supplied with the appropriate contact blocks, unless otherwise indicated. Use these drawings as a guide to make sure there is adequate clearance behind the panel.

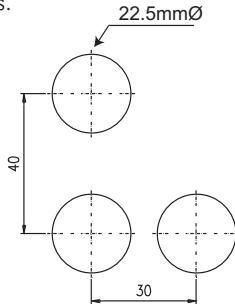
Pushbuttons and selector switches

Lighted pushbuttons and selector switches/pilot lights



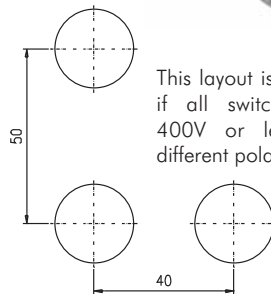
Panel holes

For safe operation, use these mounting hole drawings to ensure that there is adequate space between switches.



This layout is suitable if all switches are 230V or less and the same polarity.

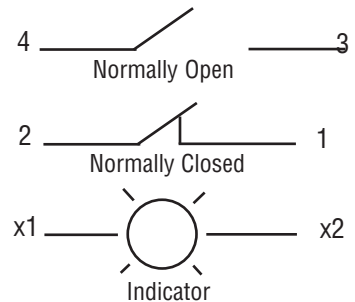
NOTE: Contact blocks can be arranged up to three deep by two wide.



This layout is suitable if all switches are 400V or less and different polarity.

All dimensions are in millimeters. 25.4mm = 1 inch. For example, 30 mm in inches = 30/25.4 = 1.181 inches.

Typical Wiring



Specifications

These specifications apply to all the 22 mm metal pushbuttons and switches.

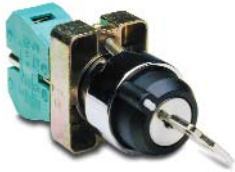
| Physical Specifications | |
|----------------------------|--|
| Standards Reference | CEI EN 60947-5-1, CSA C22-2 n.14 |
| Approvals | CSA, IMQ (where specified), UL File E189258 |
| Enclosure Material | Zn + Al + Mg alloy, chromium plated |
| Contacts Material | Gold plated silver |
| Protection Degree | IP 40 for GCX3151-24, GCX3151-120, GCX3153-24 and GCX3153-120. IP 65 for all others. (See Appendix of this catalog for explanation of IP ratings according to IEC 144 CEI 70-1.) |
| Temperature Ratings | Storage: -40° to 80°C (-40° to 176° F) Operating: -25° to +70°C (-13° to 158° F) |
| Working Positions | All working positions are allowed |
| Mechanical Life | Pushbuttons, selector switches, joy stick switches: 1,000,000 operations Mushroom pushbuttons: 300,000 operations |

| Electrical Specifications | |
|--|---|
| Rated Thermal Current (contact block) | A300, Q300 (Refer to page e25-51. for more information.) |
| Rated Insulation Voltage | Ui 660V according to CEI EN 60947-5-1, 300V according to CSA C22-2 n.14 |
| Dielectric Strength | 3KV (1 second) |
| Insulation Resistance | 2MΩ min. (500VDC) |
| Initial Contact Resistance | ≤25mΩ |
| Short-Circuit Protection* | Cartridge fuses gl 10 A-500V 10,3x38I1 100 KA |
| Terminal Markings | According to CENELEC EN 50013 |
| Connections | Single screw with non-loosening plate clamp, 14AWG max. |
| Contacts Operation | Self-cleaning types EN01 (N.C.) EN 10 (N.O.) slow action, positive opening |
| Operation Frequency | 3600 operations per hour max. |
| Utilization Category | AC15 (Control of AC electromagnetic loads) 24 volts AC at 10 amps 130 volts AC at 6.5 amps DC13 (Control of DC electromagnetic loads) 24 volts DC at 1.5 amps 110 volts DC at 0.5 amps |

*Note: Recommended, not supplied

22 mm Metal Key Switches

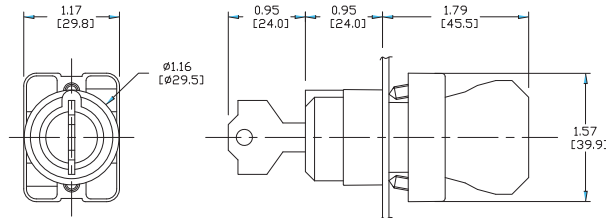
Key-operated selector switches



GCX1420

(2-position maintained)

| Part Number | Description | Price |
|-------------------|---|-------|
| GCX1420 | 22 mm metal selector switch, key-operated, two-position maintained , key can be removed in all positions. One N.O. contact block. Replacement keys available | <---> |
| GCX1430 | 22 mm metal selector switch, key-operated, two-position spring-return from right . One N.O. contact block. Replacement keys available | <---> |
| GCX1470-22 | 22 mm metal selector switch, key-operated, three-position maintained , key can be removed in all positions. Two N.O. and two N.C. contact blocks. Replacement keys available | <---> |



Note: Keyed switches come with two keys. All metal 22 mm keyed switches are keyed the same. Replacement keys are available. Order part no. ECX1067-2 (pkg. of 2). Keys for metal 22 mm keyed switches are not compatible with Cutler-Hammer key switches.



Note: When using switches having two-deep contact blocks (such as, Model GCX1470-22) with the 22 mm plastic enclosures, be sure to use enclosures that are 74 mm deep. 51 mm-deep enclosures are too shallow and the switch body will not fit.

Note: For contact closure sequence, refer to page e25-33.

- Company Info.
- PLCs
- Field I/O
- Software
- C-more & other HMI
- AC Drives
- AC Motors
- Power Transmiss.
- Steppers/ Servos
- Motor Controls
- Proximity Sensors
- Photo Sensors
- Limit Switches
- Encoders
- Current Sensors
- Pressure Sensors
- Temp. Sensors
- Pushbuttons/ Lights
- Process
- Relays/ Timers
- Comm.
- Terminal Blocks & Wiring
- Power
- Circuit Protection
- Enclosures
- Tools
- Appendix
- Part Index

Note: You will find our extensive line of accessories on pages e25-41 to e25-43,

Note: All dimensions are in inches [millimeters].