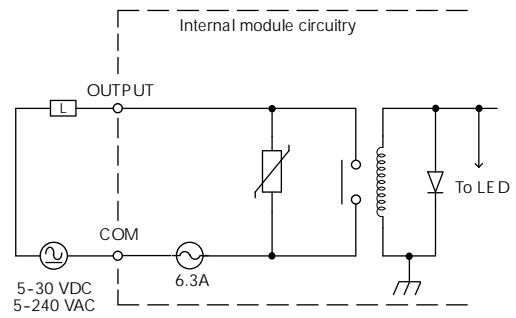
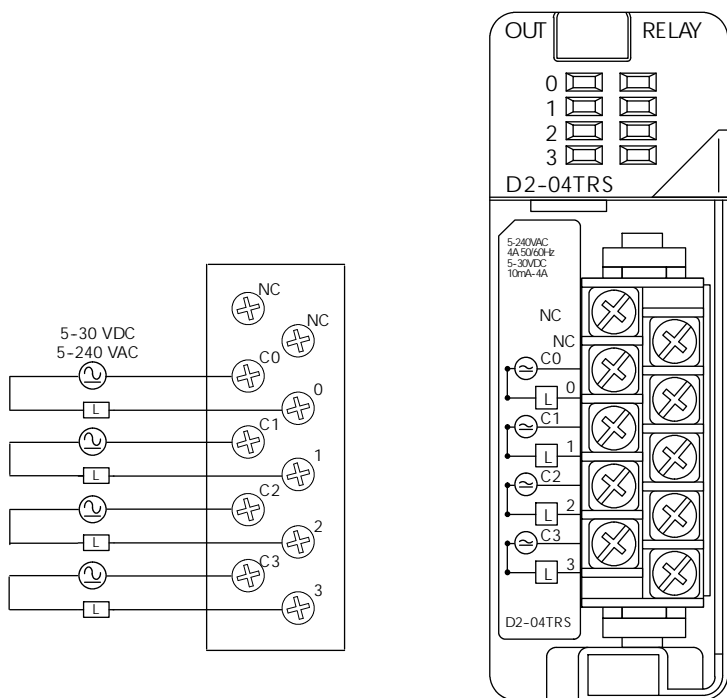
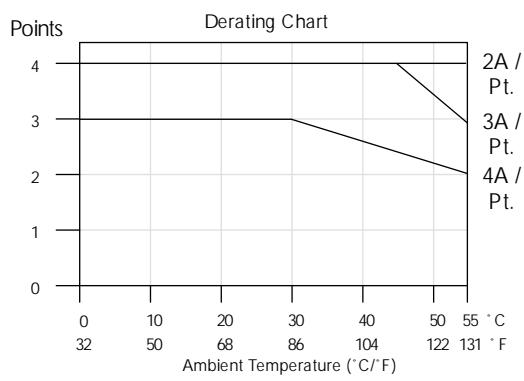


# Relay Output Modules

| D2-04TRS Relay Output <--->         |  |
|-------------------------------------|--|
| <b>Outputs per Module</b>           | 4  |
| <b>Outputs Points Consumed</b>      | 8 (only 1st 4pts. are used)  |
| <b>Commons per Module</b>           | 4 (isolated)   |
| <b>Output Type</b>                  | Relay, form A (SPST)   |
| <b>Operating Voltage</b>            | 5-30 VDC / 5-240 VAC   |
| <b>Peak Voltage</b>                 | 30 VDC, 264 VAC  |
| <b>ON Voltage Drop</b>              | 0.72 VDC maximum   |
| <b>AC Frequency</b>                 | 47 to 63 Hz  |
| <b>Minimum Load Current</b>         | 10 mA  |
| <b>Max Load Current (resistive)</b> | 4A/point; 8A/module (resistive)  |
| <b>Max Leakage Current</b>          | 0.1 mA @ 264 VAC   |
| <b>Max Inrush Current</b>           | 5A for < 10 ms   |
| <b>Base Power Required 5VDC</b>     | 250 mA   |
| <b>OFF to ON Response</b>           | 10 ms  |
| <b>ON to OFF Response</b>           | 10 ms  |
| <b>Terminal Type (included)</b>     | Removable; D2-8IOCON   |
| <b>Status Indicator</b>             | Logic side   |
| <b>Weight</b>                       | 2.8 oz. (80 g)   |
| <b>Fuses</b>                        | 1 per point<br>6.3A slow blow, replaceable<br>Order D2-FUSE-3 (5 per pack) |

| Typical Relay Life (Operations) |      |      |      |      |
|---------------------------------|------|------|------|------|
| Voltage & Load Current          |      |      |      |      |
| Type of Load                    | 1A   | 2A   | 3A   | 4A   |
| 24 VDC Resistive                | 500k | 200k | 100k | 50k  |
| 24 VDC Solenoid                 | 100k | 40k  | —    | —    |
| 110 VAC Resistive               | 500k | 250k | 150k | 100k |
| 110 VAC Solenoid                | 200k | 100k | 50k  | —    |
| 220 VAC Resistive               | 350k | 150k | 100k | 50k  |
| 220 VAC Solenoid                | 100k | 50k  | —    | —    |

**At 24 VDC, solenoid (inductive) loads over 2A cannot be used.**  
**At 100 VAC, solenoid (inductive) loads over 3A cannot be used.**  
**At 220 VAC, solenoid (inductive) loads over 2A cannot be used.**



- PLC Overview
- DL05/06 PLC
- DL105 PLC
- DL205 PLC**
- DL305 PLC
- DL405 PLC
- Field I/O
- Software
- C-more HMIs
- Other HMI
- AC Drives
- Motors
- Steppers/Servos
- Motor Controls
- Proximity Sensors
- Photo Sensors
- Limit Switches
- Encoders
- Current Sensors
- Pushbuttons/Lights
- Process
- Relays/Timers
- Comm.
- TB's & Wiring
- Power
- Circuit Protection
- Enclosures
- Appendix
- Part Index