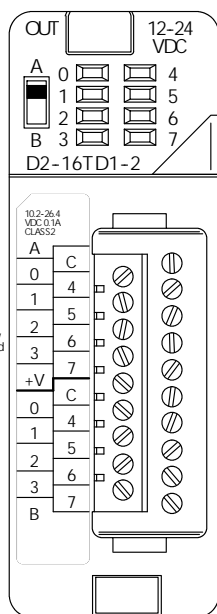
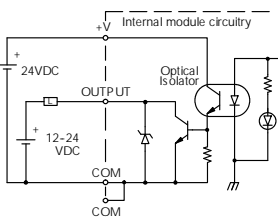
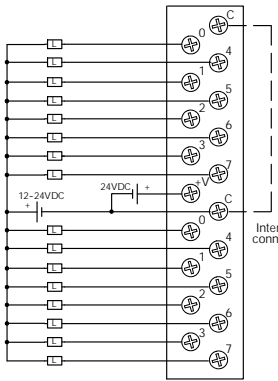
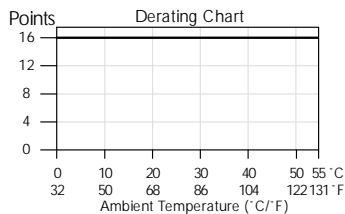


DC Output Modules

D2-16TD1-2 DC Output <---->	
Outputs per Module	16 (current sinking)
Commons per Module	1 (2 I/O terminal points)
Output Type	NPN open collector
External DC required	24 VDC $\pm 4V$ @ 80 mA max
Operating Voltage	10.2-26.4 VDC
Peak Voltage	30 VDC
ON Voltage Drop	0.5 VDC maximum
AC Frequency	N/A
Minimum Load Current	0.2 mA
Max Load Current	0.1A/point 1.6A/common
Max Leakage Current	0.1 mA @ 30 VDC
Max Inrush Current	150 mA for 10 ms
Base Power Required 5VDC	200 mA
OFF to ON Response	0.5 ms
ON to OFF Response	0.5 ms
Terminal Type (included)	Removable; D2-16IOCON
Status Indicator	Logic side
Weight	2.3 oz. (65g)
Fuses	None

See the Terminal Blocks and Wiring section for part numbers of ZIPLink cables and terminal blocks compatible with this module.



D2-16TD2-2 DC Output <---->	
Outputs per Module	16 (current sourcing)
Commons per Module	2
Output Type	NPN open collector
Operating Voltage	10.2-26.4 VDC
Peak Voltage	30 VDC
ON Voltage Drop	1.0 VDC maximum
AC Frequency	N/A
Minimum Load Current	0.2 mA
Max Load Current	0.1A/point 1.6A/module
Max Leakage Current	0.1 mA @ 30 VDC
Max Inrush Current	150 mA for 10 ms
Base Power Required 5VDC	200 mA
OFF to ON Response	0.5 ms
ON to OFF Response	0.5 ms
Terminal Type (included)	Removable; D2-16IOCON
Status Indicator	Logic side
Weight	2.8 oz. (80g)
Fuses	None

See the Terminal Blocks and Wiring section for part numbers of ZIPLink cables and terminal blocks compatible with this module.

