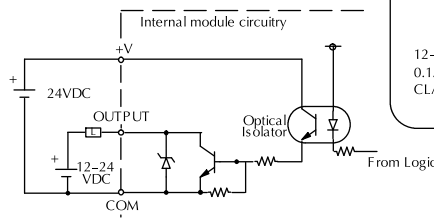
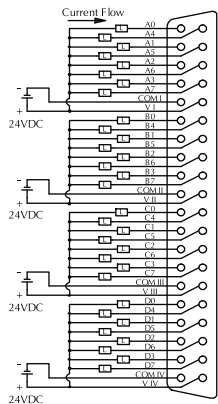
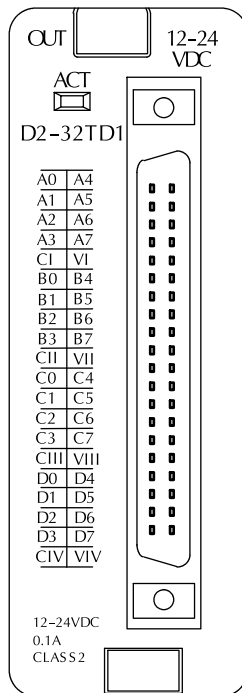
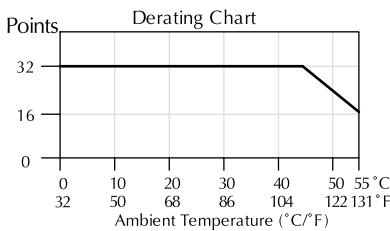


DC Output Modules

D2-32TD1 DC Output <--->	
Outputs per Module	32 (current sinking)
Commons per Module	4 (8 I/O terminal points)
Output Type	NPN open collector
Operating Voltage	12-24 VDC
Peak Voltage	30 VDC
ON Voltage Drop	0.5 VDC maximum
Minimum Load Current	0.2mA
Max Load Current	0.1A/point; 3.2A per module
Max Leakage Current	0.1 mA @ 30 VDC
Max Inrush Current	150 mA for 10 ms
Base Power Required 5VDC	350 mA
OFF to ON Response	0.5 ms
ON to OFF Response	0.5 ms
Terminal Type (not included)	removable 40-pin connector ¹
Status Indicator	Module activity (no I/O status indicators)
Weight	2.1 oz. (60g)
Fuses	None
External DC Power Required	20-28 VDC max. 120 mA (all points on)
¹ Connector sold separately. See Terminal Blocks and Wiring for wiring options.	

See the Terminal Blocks and Wiring section for part numbers of ZIPLink cables and terminal blocks compatible with this module.



D2-32TD2 DC Output <--->	
Outputs per Module	32 (current sourcing)
Commons per Module	4 (8 I/O terminal points)
Output Type	Transistor
Operating Voltage	12 to 24 VDC
Peak Voltage	30 VDC
ON Voltage Drop	0.5 VDC @ 0.1A
Minimum Load Current	0.2 mA
Max Load Current	0.1A/point; 0.8A/common
Max Leakage Current	0.1 mA @ 30 VDC
Max Inrush Current	150 mA @ 10 ms
Base Power Required 5VDC	350 mA
OFF to ON Response	0.5 ms
ON to OFF Response	0.5 ms
Terminal Type (not included)	Removable 40-pin connector ¹
Status Indicator	Module activity (no I/O status indicators)
Weight	2.1 oz (60g)
Fuses	None
¹ Connector sold separately. See Terminal Blocks and Wiring for wiring options.	

See the Terminal Blocks and Wiring section for part numbers of ZIPLink cables and terminal blocks compatible with this module.

Derating Chart

