

DataWorx Productivity3000 Server

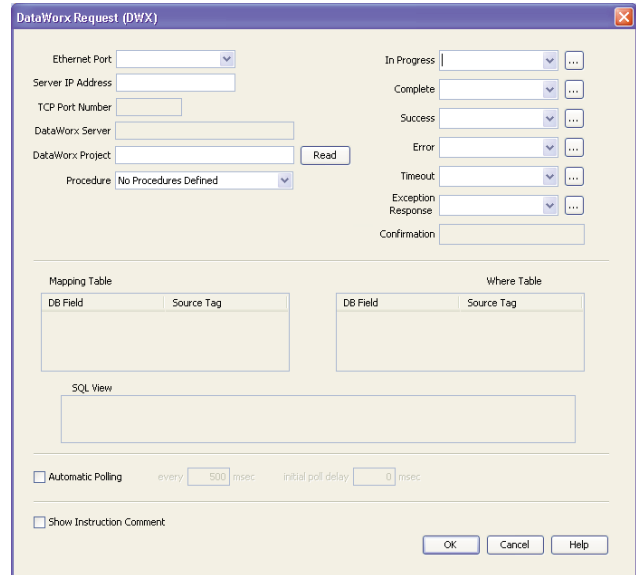
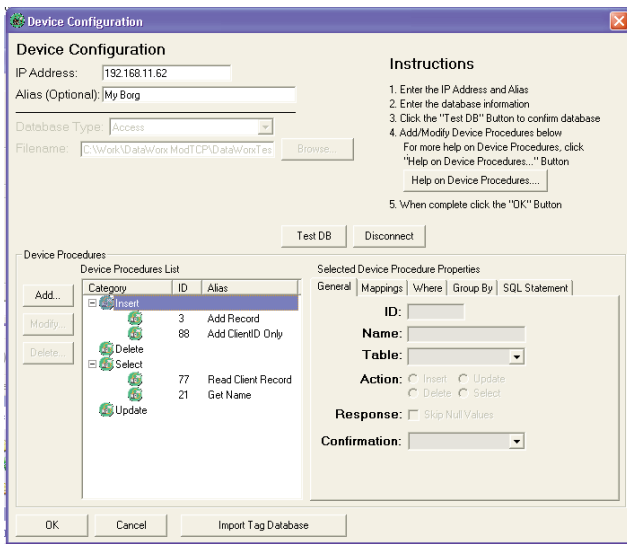
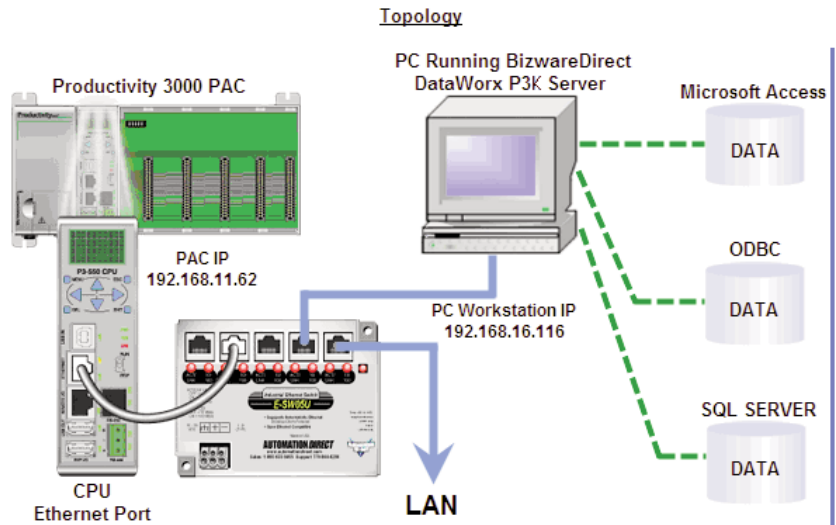
The DataWorx P3K server software maximizes the value of your industrial data by allowing you to collect data and connect your Productivity3000 system to networked database servers. Collect real-time data from the plant floor and store it into a standard Microsoft Access, SQL server or ODBC compatible database. The

unique report-by-exception technology allows direct communication between the Productivity3000 and the database(s). It gives control of the data logging and storage to the CPU so it can send data only when needed, greatly reducing the amount of network traffic.

Connect your Productivity3000 to your Enterprise system

What is it?

DataWorx P3K gives you an inexpensive solution for connecting your Productivity3000 controller to enterprise systems by providing direct database interaction. Productivity3000 is able to conduct its own database operations, so records are always accurate and up-to-date. DataWorx P3K connects people to the plant, putting valuable information in the hands of those who need it to make crucial decisions.

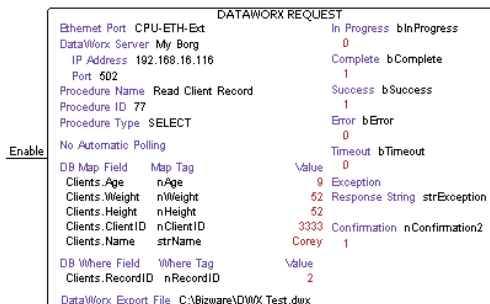


Benefits of DataWorx P3K

- Makes industrial data directly and readily available to those who need it to make organizational decisions
- Allows data to flow freely between plant floor and your IT enterprise system
- Report-by-exception technology eases network traffic
- Gives PAC complete control over data storage and retrieval
- Easy installation, no database programming necessary
- No SCADA system needed
- Store unlimited amounts of data

Built-in Ladder Instruction

The Productivity3000 has incorporated a DataWorx instruction to simplify the configuration and data transfer between the controller and enterprise network.



Practical Applications

- Enable your industrial devices to track plant-floor progress and maintain a precise inventory to increase efficiency and accuracy.
- Store, set and change recipes to improve reliability in operations using multiple formulas and set-points.
- Log valuable production data into a data base for convenient storage, easy retrieval and organized displays.
- Archive test data in a secure database with built-in date/time stamping features to satisfy quality assurance or audit procedures.