

Non-Fusible Disconnects

SIRCO Series Selection Guides

SIRCO Series Front-operated Non-Fusible Disconnects					
Switch Body Part Number	Price	Weight lb(kg)	Ampere Rating	Hp @ Voltage	Interrupt Capacity (kA)*
SCV30	<--->	3.9(1.79)	30	15 Hp @ 480V	50
SCV60	<--->	4.0(1.80)	60	30 Hp @ 480V	200
SCV100	<--->	5.5(2.50)	100	60 Hp @ 480V	200
SCV200	<--->	7.6(3.40)	200	125 Hp @ 480V	200
SCV400	<--->	17.2(7.80)	400	250 Hp @ 480V	200
SC600	<--->	18.7(8.50)	600	400 Hp @ 480V	200
SC800	<--->	19.6(8.90)	800	500 Hp @ 480V	100

* When fused separately

Ferraz Non-Fusible Disconnects Component Selection Guide				
Part Number	Price	Weight lb(kg)	Description	Use with
SD200-5	<--->	0.2(0.09)	Operator shaft, type D, 7.9" (200 mm) length, 5x5 mm thick (purchase handle separately)	SCV30
SD320-5	<--->	0.3(0.14)	Operator shaft, type D, 12.6" (320 mm) length, 5x5 mm thick (purchase handle separately)	SCV30
SG120-5	<--->	0.15(0.07)	Operator shaft, type G, 4.7" (120 mm) length, 5x5 mm thick (purchase handle separately)	SCV30
SG200-10	<--->	0.3(0.14)	Operator shaft, type G, 7.9" (200 mm) length, 10x10 mm thick (purchase handle separately)	SCV60 thru SCV400
SG200-5	<--->	0.2(0.09)	Operator shaft, type G, 7.9" (200 mm) length, 5x5 mm thick (purchase handle separately)	SCV30
SG320-10	<--->	0.5(0.23)	Operator shaft, type G, 12.6" (320 mm) length, 10x10 mm thick (purchase handle separately)	SCV60 thru SCV400
SG320-5	<--->	0.2(0.09)	Operator shaft, type G, 12.6" (320 mm) length, 5x5 mm thick (purchase handle separately)	SCV30
SG400-10	<--->	0.7(0.32)	Operator shaft, type G, 15.7" (400 mm) length, 10x10 mm thick (purchase handle separately)	SCV60 thru SCV400
SH400-15	<--->	2.1(0.95)	Operator shaft, type H, 17.7" (450 mm) length, 15x15 mm thick (purchase handle separately)	SC600, SC800
HADB1	<--->	0.1(0.05)	Direct operation handle	SCV30
HADB6	<--->	0.4(0.18)	Direct operation, optional handle, 12.415" (315.314 mm) long padlocking on the switch, NFPA 79 compliant	SCV30
HADB8	<--->	0.4(0.18)	Direct operation, optional handle, 12.415" (315.314 mm) long padlocking on the switch, NFPA 79 compliant	SCV60 thru SCV400
HDPB	<--->	0.2(0.09)	Black Pistol handle, NEMA 12, 2.48" (63 mm) long, Type D, defeatable and lockable	SCV30
HDPR	<--->	0.2(0.09)	Red and yellow Pistol handle, NEMA 12, 2.48" (63 mm) long, Type D, defeatable and lockable	SCV30
HGPB	<--->	0.5(0.23)	Black Pistol handle, NEMA 12, 2.78" (70.6 mm) long, Type G, defeatable and lockable	SCV30
HGPB4	<--->	0.6(0.27)	Black Pistol handle, NEMA 4X, 2.78" (70.6 mm) long, Type G, defeatable and lockable	SCV30
HGPB4L	<--->	0.7(0.32)	Black long Pistol handle, NEMA 4X, 4.98" (126.49 mm) long, Type G long, defeatable and lockable	SCV60 thru SCV400
HGPBL	<--->	0.6(0.27)	Black long Pistol handle, NEMA 12, 4.98" (126.49 mm) long, Type G long, defeatable and lockable	SCV60 thru SCV400
HGPR	<--->	0.6(0.27)	Red and yellow Pistol handle, NEMA 12, 2.78" (70.6 mm) long, Type G, defeatable and lockable	SCV30
HGPR4	<--->	0.6(0.27)	Red and yellow Pistol handle, NEMA 4X, 2.78" (70.6 mm) long, Type G, defeatable and lockable	SCV30
HGPR4L	<--->	0.6(0.27)	Red and yellow long Pistol handle, NEMA 4X, 4.98" (126.49 mm) long, Type G long, defeatable and lockable	SCV60 thru SCV400
HGPRL	<--->	0.6(0.27)	Red and yellow long Pistol handle, NEMA 12, 4.98" (126.49 mm) long, Type G long, defeatable and lockable	SCV60 thru SCV400
HHPB4SC	<--->	1.3(0.59)	Black Pistol handle, NEMA 4X, 7.48" (190 mm) long, Type H, defeatable and lockable	SC600, SC800

Ferraz Non-Fusible Disconnects Accessories Selection Guide				
Part Number	Price	Weight lb(kg)	Description	Use with
ACHCD	<--->	0.2(0.09)	Auxiliary contact holder (accommodates up to 4 auxiliary contacts)	SCV30
ACH	<--->	0.2(0.09)	Auxiliary contact holder (accommodates up to 8 auxiliary contacts)	SCV60 thru SCV400
ACHSC	<--->	0.1(0.05)	Auxiliary contact holder (accommodates up to 4 auxiliary contacts)	SC600, SC800
AC3	<--->	0.1(0.05)	Auxiliary contact for SIRCO non-fused disconnect switches. One N.O. contact. 10 Amp, 600 VAC	All SIRCO switches
AC4	<--->	0.1(0.05)	Auxiliary contact for SIRCO non-fused disconnect switches. One N.C. contact. 10 Amp, 600 VAC	All SIRCO switches
TL200	<--->	0.4(0.18)	Terminal lug kit, Aluminum, tin-plated, 3/0 to #6, 6 lugs per kit	SCV200
TL400	<--->	5.0(2.27)	Terminal lug kit, Aluminum, tin-plated, 600Mcm to #2, 6 lugs per kit	SCV400
TL600	<--->	5.0(2.27)	Terminal lug kit, Aluminum, tin-plated, (2) 600Mcm to #2, 6 lugs per kit	SC600
TL800	<--->	10.0(4.5)	Terminal lug kit, Aluminum, tin-plated, (3) 600Mcm to #2, 6 lugs per kit	SC800
TS200SC*	<--->	0.7(0.32)	Terminal shroud kit - 3 pole, Use with 200 amp non-fusible switch. For line or load side.	SCV200
TS1200SC*	<--->	0.7(0.32)	Terminal screen kit - 3 pole, Use with 800 amp non-fusible switch. For line or load side.	SC800

*Note: Line side terminal shroud supplied standard with switch.

Non-Fusible Disconnects

SIRCO Series - Build a Complete Switch

30 Amp

STEP 1

Choose a switch body



Switch body

Switch Body	Ampere Rating	Hp @ Voltage	Interrupt Capacity (kA)
SCV30*	30	15 Hp @ 480V	50

*Note: Lugs, shrouds, and screens are integrated into this switch

STEP 2

Choose a handle



Short handles

Short Handle	
HDPB	Pistol, Black, NEMA 1, 3R, 12, Type D
H DPR	Pistol, Red/yellow, NEMA 1, 3R, 12, Type D



Standard handles

Standard Handle	
HGPB	Pistol, Black, NEMA 1, 3R, 12, Type G.
HGPB4	Pistol, Black, NEMA 4, 4X, Type G.
HGPR	Pistol, Red /yellow, NEMA 1, 3R, 12, Type G
HGPR4	Pistol, Red /yellow, NEMA 4, 4X, Type G

Direct handles

Direct Mount Handle	
HADB1	Direct mount, Black. No shaft required.



NFPA 79 compliant handle

NFPA 79 Compliant Handle	
HADB6	NFPA 79-compliant, allows operation and padlocking the switch when door is open. Red. No shaft required.



STEP 3

Choose a shaft



Short handle shafts

Shaft for Short Handle	
SD200-5	Type D, 7.9" (200 mm) long
SD320-5	Type D, 12.6" (320 mm) long



Standard handle shafts

Shaft for Standard Handle	
SG120-5	Type G, 4.7" (120 mm) long
SG200-5	Type G, 7.9" (200 mm) long
SG320-5	Type G, 12.6" (320 mm) long

Shaft not used with Direct Handle

Select a standard handle.

Note: Short handle cannot be used with NFPA79-compliant handle.

STEP 4

Choose your Accessories

Accessories	Description	Use With
ACHCD	Auxiliary contact holder (accommodates up to 4 auxiliary contacts). REQUIRED when using AC3 or AC4.	SCV30
AC3	Auxiliary contact. One N.O. contact. 10 Amp. 600 VAC REQUIRES ACHCD . Please purchase separately.	SCV30
AC4	Auxiliary contact. One N.C. contact. 10 Amp. 600 VAC REQUIRES ACHCD . Please purchase separately.	SCV30



Non-Fusible Disconnects

SIRCO Series - Build a Complete Switch

60 Amp to 400 Amp

STEP 1

Choose a switch body



Switch body

Switch Body	Ampere Rating	Hp @ Voltage	Interrupt Capacity (kA)
SCV60*	60	30 Hp @ 480V	200
SCV100*	100	60 Hp @ 480V	200
SCV200**	200	125 Hp @ 480V	200
SCV400***	400	200 Hp @ 480V	200

*Note: Lugs, shrouds, and screens are integrated into this switch.

**Note: Line side screen included with this switch. Use TL200 lugs and TS200SC screen, sold separately, for load side.

***Note: Screens and shrouds are integrated into this switch. Use TL400 lugs, sold separately.

STEP 2

Choose a handle



Standard handles

Standard Handle	
HGPBL	Pistol, Long Black, NEMA 1, 3R, 12; 4.98" long, Type G
HGPB4L	Pistol, Long Black, NEMA 4, 4X, 4.98" long, Type G
HGPRL	Pistol, Long Red/yellow NEMA 1, 3R, 12; 4.98" long, Type G
HGPR4L	Pistol, Long Red/yellow NEMA 4, 4X, 4.98" long, Type G



NFPA 79 compliant handle

NFPA 79 Compliant Handle	
HADB8	NFPA 79-compliant, allows operation and padlocking the switch when door is open. Red. No shaft required.

STEP 3

Choose a shaft



Standard handle shafts

Shaft for Standard Handle	
SG200-10	Type G, 7.9" (200 mm) long
SG320-10	Type G, 12.6" (320 mm) long
SG400-10	Type G, 15.7" (400 mm) long

Select a standard handle

STEP 4

Choose your Accessories



Accessories	Description	Use With
ACH	Auxiliary contact holder (accommodates up to 8 auxiliary contacts). REQUIRED when using AC3 or AC4.	SCV60 thru SCV400
AC3	Auxiliary contact. One N.O. contact. 10 Amp. 600 VAC. REQUIRES ACH . Please purchase separately.	
AC4	Auxiliary contact. One N.C. contact. 10 Amp. 600 VAC. REQUIRES ACH . Please purchase separately.	
TL200	Terminal lug kit, Aluminum, tin-plated, 3/0 to #6, 6 lugs per kit	SCV200
TL400	Terminal lug kit, Aluminum, tin-plated, 600Mcm to #2, 6 lugs per kit	SCV400
TS200SC	Terminal shroud kit, - 3 pole, Use with 200 amp non-fusible switch. For line or load side. 3 shrouds per kit.	SCV200

PLC Overview

DL05/06 PLC

DL105 PLC

DL205 PLC

DL305 PLC

DL405 PLC

Field I/O

Software

C-more HMIs

Other HMI

AC Drives

Motors

Steppers/ Servos

Motor Controls

Proximity Sensors

Photo Sensors

Limit Switches

Encoders

Pushbuttons/ Lights

Process

Relays/ Timers

Comm.

TB's & Wiring

Power

Enclosures

Appendix

Part Index

Non-Fusible Disconnects

SIRCO Series - Build a Complete Switch

600 Amp to 800 Amp

STEP 1

Choose a switch body



Switch Body

Switch Body	Ampere Rating	Hp @ Voltage	Interrupt Capacity (kA)
SC600*	600	400 Hp @ 480V	200
SC800**	800	500 Hp @ 480V	100

*Note: Line side screen included with this switch. Use TL600 lugs, sold separately.

**Note: Line side screen included with this switch. Use TL800 lugs and TS1200SC screen, sold separately, for load side.

STEP 2

Choose a handle



Long Handle

Long Handle	
HHPB4SC	Black, NEMA 4, 4X; 7.48" long, Type H.

STEP 3

Choose a shaft



Shaft for Long Handle

Shaft for Long Handle	
SH400-15	Type H, 17.7" (450 mm) long

STEP 4

Choose your Accessories



ACHSC



AC3



AC4



TL600



TL800



TS1200SC

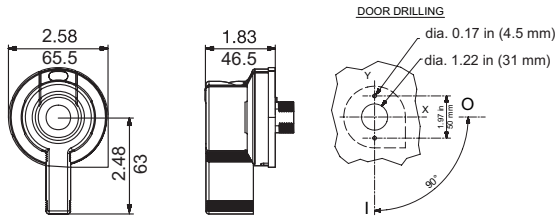
Accessories	Description	Use With
ACHSC	Auxiliary contact holder (accommodates up to 4 auxiliary contacts). REQUIRED when using AC3 or AC4.	SC600 thru SC800
AC3	Auxiliary contact. One N.O. contact. 10 Amp. 600 VAC. REQUIRES ACHSC. Please purchase separately.	SC600 thru SC800
AC4	Auxiliary contact. One N.C. contact. 10 Amp. 600 VAC. REQUIRES ACHSC. Please purchase separately.	SC600 thru SC800
TL600	Terminal lug kit, Aluminum, tin-plated, (2) 600Mcm to #2, 6 lugs per kit	SC600
TL800	Terminal lug kit, Aluminum, tin-plated, (3) 600Mcm to #2, 6 lugs per kit	SC800
TS1200SC	Terminal screen kit - 3 pole, Use with 800 amp non-fusible switch, For line or load side. 1 screen per kit.	SC800

Ferraz Shawmut Non-Fusible Disconnects

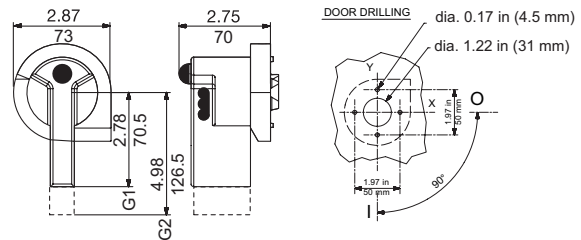
SIRCO Series Dimensions

Handles for external front operation

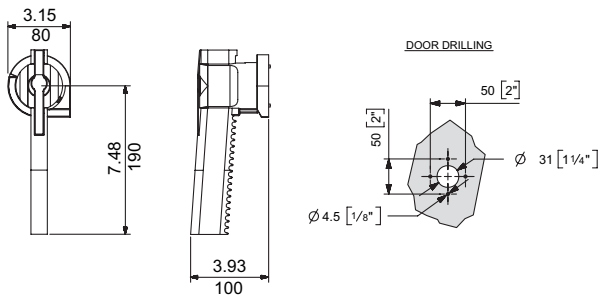
PISTOL HANDLE TYPE D(short)



PISTOL HANDLE TYPE D (standard)

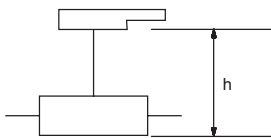


PISTOL HANDLE TYPE H (long)



Backplate-to-door distance with shaft extension (in/mm)

MINIMUM DISTANCE (in/mm)

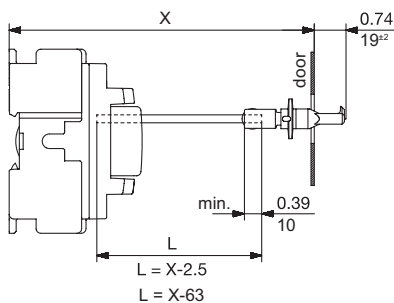


h Minimum Dimension	Handle Type D		Handle Type G		Handle Type H	
	in	mm	in	mm	in	mm
SCV30	4.53	115	3.74	95	-	-
SCV60 to SCV100	-	-	4.73	120	-	-
SCV200	-	-	4.33	110	-	-
SC400 to SC600	-	-	-	-	8.35	212
SC800	-	-	-	-	8.35	212

Shaft trimming length (Dimension L)

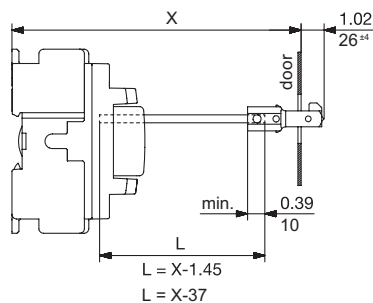
PISTOL HANDLE TYPE D

SCV30



PISTOL HANDLE TYPE G

SCV30



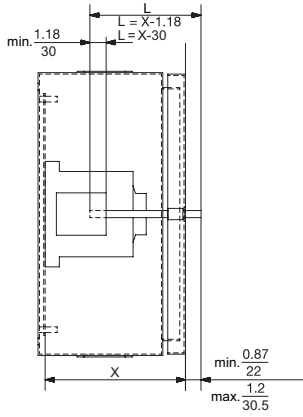
Non-Fusible Disconnects

SIRCO Series Dimensions

Backplate-to-door distance with shaft extension, continued (in/mm)

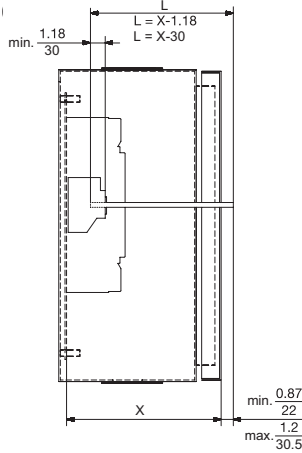
PISTOL HANDLE TYPE G

SCV60
SCV100
SCV200



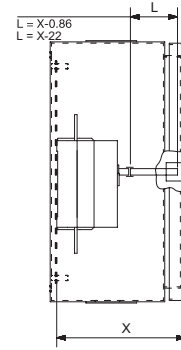
PISTOL HANDLE TYPE G

SCV400



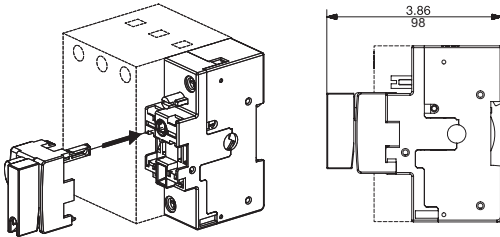
PISTOL HANDLE TYPE H

SC600
SC800



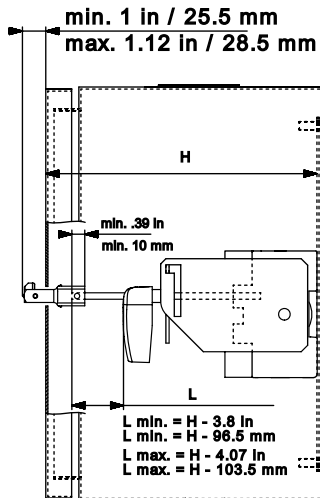
Handle for direct front operation

HADB1

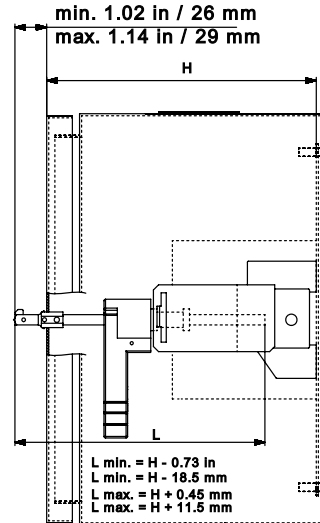


NFPA 79 Compliant Switches

HADB6



HADB8

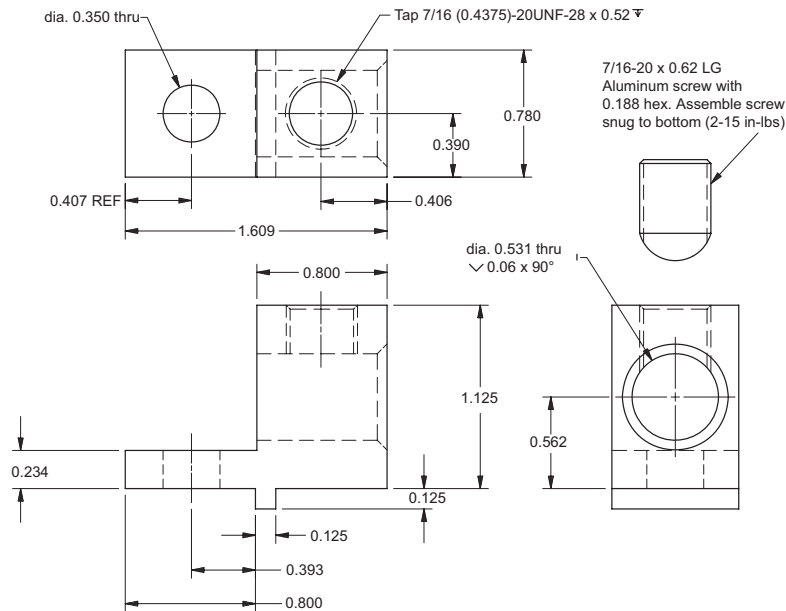


SIRCO Series Dimensions

Terminal Lugs

TL200

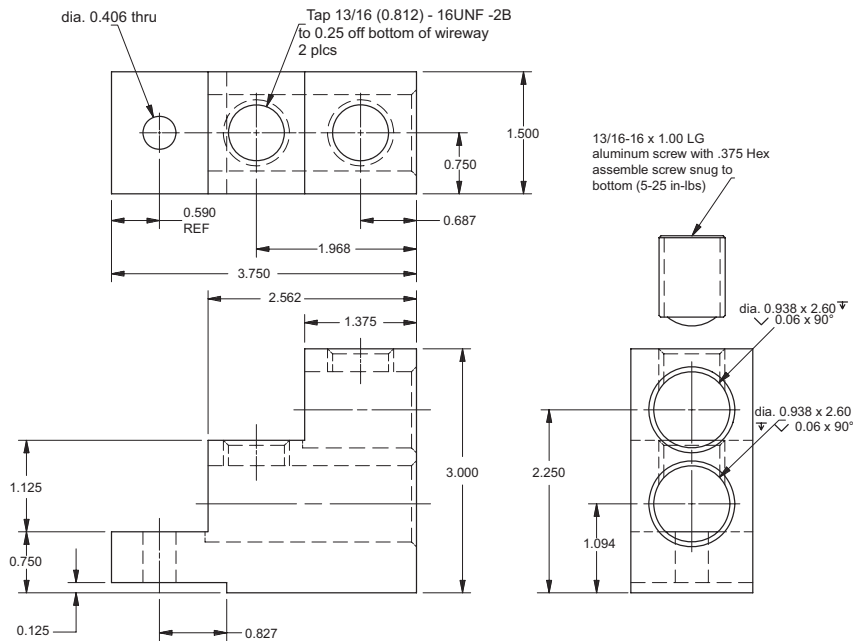
Use with SCV200 switch



1 wire 3/0 - #6

TL400, TL600

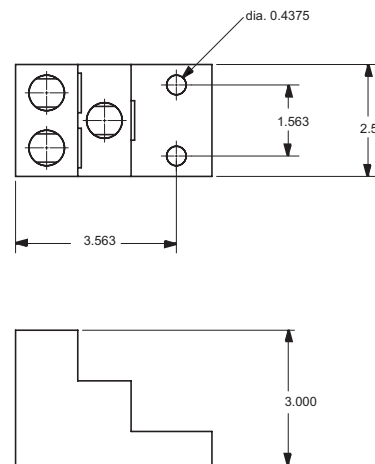
Use with SCV400, SCV600



2 wire Kcmil#2

TL800

Use with SC800



3 wire Kcmil#2

dimensions = inches

Fusible Disconnects

FUSERBLOC Series



Overview

Ferraz Shawmut FUSERBLOC fusible disconnect switches employ double break contacts per pole to isolate the fuse when the switch is in the OFF position. They are durable, manually operated, and supplied with fuse covers and line side shrouding as a standard safety feature. When used with AutomationDirect's Class CC or J fuses,

these switches are tops in short circuit protection. Designed using the latest technology, they comply with UL98 requirements. FUSERBLOC switches are tested and approved for heavy duty applications, such as "service entrance" or main panel disconnects. Choose from a wide selection of handles meeting OSHA padlocking requirements, NEMA configurations, defater options and NFPA 79 requirements.

Features

- Double break contacts per pole up to 200 A
- Touch-safe fuse covers and line shrouding standard
- Service entrance rated
- Compact footprints
- Front operated switches
- Defeatable pistol handles automatically re-latch when panel door is closed - no tool necessary to reset latch
- External or direct operation handles.

Applications

- Service entrance or main panel disconnects
- "Make and Break" power circuit applications on load
- Fusible isolation switches
- NFPA 79 Solutions

Rating

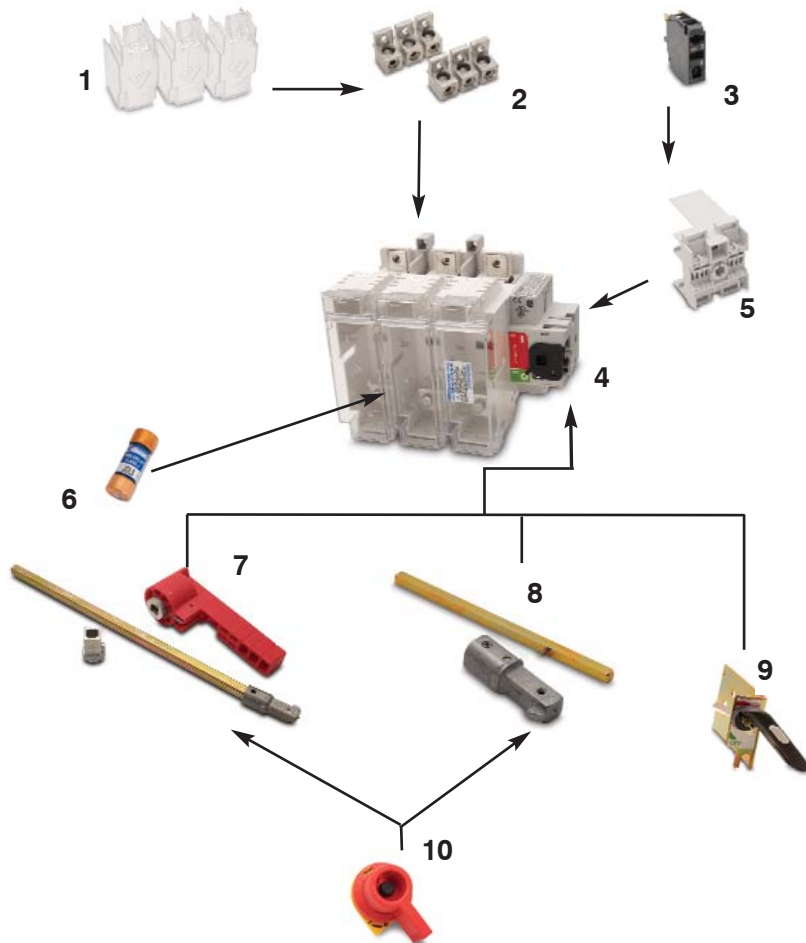
- 600 VAC, 250 VDC
- 30, 60, 100 and 200 Amperes
- Up to 200 kA short circuit rating with Class CC or J fuses

Approvals

- All FUSERBLOC switches are UL98 rated
- UL Listed Guide WHTY, File E191605
- CSA C22.2 # 4 Class 4652 04, File 703166
- IEC 947-3
CE mark

Components

- 1 - Terminal Shroud
- 2 - Terminal Lugs
- 3 - Auxiliary Contact Block
- 4 - Disconnect Switch
- 5 - Auxiliary Contact Holder
- 6 - Fuses
- 7 - NFPA 79 Compliant Handle
- 8 - Standard Shaft
- 9 - Direct Mount Handle
- 10 - External Door Handle



Fusible Disconnects

FUSERBLOC Series Selection Guides

FUSERBLOC Series Front-operated Fusible Disconnects						
Style	Part Number	Price	Weight lb(kg)	Ampere Rating	Hp @ Voltage	Interrupt Capacity (kA)
Compact	FBCC30CDT	<--->	1.3(0.60)	30	15 Hp @ 480V	50
	FBJ30CDT	<--->	1.3(0.60)	30	15 Hp @ 480V	50
Standard	FBJ30	<--->	4.9(2.20)	30	15 Hp @ 480V	200
	FBJ60	<--->	4.9(2.20)	60	30 Hp @ 480V	200
	FBJ100	<--->	6.2(2.80)	100	60 Hp @ 480V	200
	FBJ200	<--->	6.6(2.99)	200	125 Hp @ 480V	200

Ferraz Fusible Disconnects Component Selection Guide				
Part Number	Price	Weight lb(kg)	Description	Use With
SD200-5	<--->	0.2(0.09)	Operator shaft, type D, 7.9" (200 mm) length, 5x5 mm thick (purchase handle separately)	FBCC30CDT, FBJ30CDT
SD320-5	<--->	0.3(0.14)	Operator shaft, type D, 12.6" (320 mm) length, 5x5 mm thick (purchase handle separately)	FBCC30CDT, FBJ30CDT
SG120-5	<--->	0.15(0.07)	Operator shaft, type G, 4.7" (120 mm) length, 5x5 mm thick (purchase handle separately)	FBCC30CDT, FBJ30CDT
SG200-10	<--->	0.3(0.14)	Operator shaft, type G, 7.9" (200 mm) length, 10x10 mm thick (purchase handle separately)	FBJ30 thru FBJ200
SG200-5	<--->	0.2(0.09)	Operator shaft, type G, 7.9" (200 mm) length, 5x5 mm thick (purchase handle separately)	FBCC30CDT, FBJ30CDT
SG320-10	<--->	0.5(0.23)	Operator shaft, type G, 12.6" (320 mm) length, 10x10 mm thick (purchase handle separately)	FBJ30 thru FBJ200
SG320-5	<--->	0.2(0.09)	Operator shaft, type G, 12.6" (320 mm) length, 5x5 mm thick (purchase handle separately)	FBCC30CDT, FBJ30CDT
SG400-10	<--->	0.7(0.32)	Operator shaft, type G, 15.7" (400 mm) length, 10x10 mm thick (purchase handle separately)	FBJ30 thru FBJ200
HADB1	<--->	0.1(0.05)	Direct mount handle	FBCC30CDT
HADB2	<--->	0.2(0.09)	Direct mount handle	FBJ30CDT
HADB6	<--->	0.4(0.18)	Direct operation, optional handle, 12.415" (315.314 mm) long padlocking on the switch, NFPA 79 compliant	FBCC30CDT, FBJ30CDT
HADB8	<--->	0.4(0.18)	Direct operation, optional handle, 12.415" (315.314 mm) long padlocking on the switch, NFPA 79 compliant	FBJ30 thru FBJ200
HGPB	<--->	0.5(0.23)	Black Pistol handle, NEMA 12, 2.78" long, Type G, defeatable and lockable	FBCC30CDT, FBJ30CDT
HGPB4	<--->	0.6(0.27)	Black Pistol handle, NEMA 4X, 2.78" long, Type G, defeatable and lockable	FBCC30CDT, FBJ30CDT
HGPB4L	<--->	0.7(0.32)	Black long Pistol handle, NEMA 4X, 4.98" long, Type G long, defeatable and lockable	FBJ30 thru FBJ200
HGPBL	<--->	0.6(0.27)	Black long Pistol handle, NEMA 12, 4.98" long, Type G long, defeatable and lockable	FBJ30 thru FBJ200
HGPR	<--->	0.6(0.27)	Red and yellow Pistol handle, NEMA 12, 2.78" long, Type G, defeatable and lockable	FBCC30CDT, FBJ30CDT
HGPR4	<--->	0.6(0.27)	Red and yellow Pistol handle, NEMA 4X, 2.78" long, Type G, defeatable and lockable	FBCC30CDT, FBJ30CDT
HGPR4L	<--->	0.6(0.27)	Red and yellow long Pistol handle, NEMA 4X, 4.98" long, Type G long, defeatable/lockable	FBJ30 thru FBJ200
HGPRL	<--->	0.6(0.27)	Red and yellow long Pistol handle, NEMA 12, 4.98" long, Type G long, defeatable/lockable	FBJ30 thru FBJ200

Ferraz Fusible Disconnects Accessories Selection Guide				
Part Number	Price	Weight lb(kg)	Description	Use With
ACHCD	<--->	0.2(0.09)	Auxiliary contact holder	FBCC30CDT, FBJ30CDT
ACH	<--->	0.1(0.05)	Auxiliary contact holder	FBJ30 thru FBJ200
AC3	<--->	0.1(0.05)	Auxiliary contact for FUSERBLOC non-fused disconnect switches. One N.O. contact.10 A. 600 VAC	All FUSERBLOC switches
AC4	<--->	0.1(0.05)	Auxiliary contact for FUSERBLOC non-fused disconnect switches. One N.C. contact.10 A. 600 VAC	All FUSERBLOC switches
TL100	<--->	0.2(0.09)	Terminal lug kit, Aluminum, tin-plated, 2/0 to #14, 6 lugs per kit	FBJ100
TL200	<--->	0.4(0.18)	Terminal lug kit, Aluminum, tin-plated, 3/0 to #6, 6 lugs per kit	FBJ200
TS100FB*	<--->	0.15(0.07)	Terminal shroud kit, Use with 100 amp fusible switch, 3 per kit	FBJ100
TS200FB*	<--->	0.5(0.23)	Terminal shroud kit, Use with 200 amp fusible switch, 3 per kit	FBJ200

*Note: Line side terminal shroud supplied standard with switch.

Fusible Disconnects

FUSERBLOC Series - Build a Complete Switch

30 Amp Compact

STEP 1

Choose a switch body



Switch body

Ultra-Compact Switch Body	Ampere Rating	Hp @ Voltage	Interrupt Capacity (kA)
FBCC30CDT*	30	15 Hp @ 480V	50
FBJ30CDT*	30	15 Hp @ 480V	50

*Note: Lugs, shrouds and screens are integrated into these switches.

Use these fuses

Switch	Fuse Type	ADC Series Fuse	Current Range
FBCC30CDT	CC	EDCC HCTR HCLR	1-30
FBJ30CDT	J	JDL	1-30



STEP 2

Choose a handle



Short handles

Handle	Description
HDPB	Pistol, Black, NEMA 1, 3R, 12, Type D
H DPR	Pistol, Red/yellow, NEMA 1, 3R, 12, Type D



Standard handles

Handle	Description
HGPB	Pistol, Black, NEMA 1, 3R, 12, Type G.
HGPB4	Pistol, Black, NEMA 4, 4X, Type G,
HGPR	Pistol, Red /yellow, NEMA 1, 3R, 12, Type G
HGPR4	Pistol, Red /yellow, NEMA 4, 4X, Type G

Direct handles

Handle	Description
HADB1	Direct mount handle for FBCC30CDT, Black
HADB2	Direct mount handle for FBJ30CDT, Black

STEP 3

Choose a shaft



Short handle shafts

Shaft	Description
SD200-5	Type D, 7.9" (200 mm) long
SD320-5	Type D, 12.6" (320 mm) long



Standard handle shafts

Shaft	Description
SG120-5	Type G, 4.7" (120 mm) long
SG200-5	Type G, 7.9" (200 mm) long
SG320-5	Type G, 12.6" (320 mm) long

Shafts not used with direct handles

NFPA 79 compliant handle

Optional Handle	Description
HADB6	NFPA 79-compliant, allows operation and padlocking the switch when door is open. Red. Shaft not required.

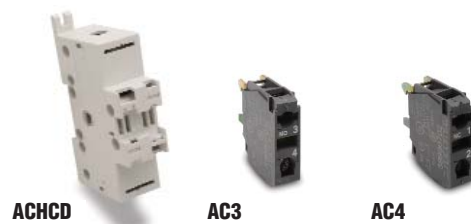
Select a standard handle

Note: Short handles cannot be used with NFPA 79 compliant handle.

STEP 4

Choose your Accessories

Part Number	Description	Use With
ACHCD	Auxiliary contact holder. Maximum capacity: 4 switches. REQUIRED when using AC3 or AC4.	FBCC30CDT, FBJ30CDT
AC3	Auxiliary contact. One N.O. contact. 10 A. 600 VAC. REQUIRES ACHCD. Please purchase separately.	All FUSERBLOC switches
AC4	Auxiliary contact. One N.C. contact. 10 A. 600 VAC. REQUIRES ACHCD. Please purchase separately.	All FUSERBLOC switches



FUSERBLOC Series - Build a Complete Switch

30 Amp to 200 Amp

STEP 1

Choose a switch body



Switch body

Switch	Ampere Rating	Hp @ Voltage	Interrupt Capacity (kA)
FBJ30*	30	15 Hp @ 480V	200
FBJ60*	60	30 Hp @ 480V	200
FBJ100**	100	60 Hp @ 480V	200
FBJ200***	200	125 Hp @ 480V	200

*Note: Screws, shrouds and lugs integrated into switch

**Note: Line side shroud included with this switch. Use terminal lug kit TL100 and TS100FB shroud, sold separately, for load side.

***Note: Line side shroud included with this switch. Use terminal lug kit TL200 and TS200FB shroud, sold separately, for load side

Use these fuses

Switch	Fuse Type	ADC Series Fuse	Current Range
FBJ30	J	JDL	1-30
FBJ60	J	JDL	35 - 60
FBJ100	J	JDL	70 - 100
FBJ200	J	JDL	125 - 200

STEP 2

Choose a handle



Standard handles

Handle	Description
HGPBBL	Pistol, Long Black, NEMA 1, 3R, 12; 4.98" long, Type G
HGPB4L	Pistol, Long Black, NEMA 4, 4X, 4.98" long, Type G
HGPR4L	Pistol, Long Red/yellow NEMA 1, 3R, 12; 4.98" long, Type G
HGPR4L	Pistol, Long Red/yellow NEMA 4, 4X, 4.98" long, Type G



NFPA 79 compliant handle

Optional Handle	Description
HADBB	NFPA 79-compliant, allows operation and padlocking the switch when door is open. Red. Shaft not required.

STEP 3

Choose a shaft



Standard handle shafts

Shaft	Description
SG200-10	Type G, 7.9" (200 mm) long
SG320-10	Type G, 12.6" (320 mm) long
SG400-10	Type G, 15.7" (400 mm) long

Select a standard shaft

STEP 4

Choose your Accessories



ACH



AC3



AC4



TL100



TL200



TS100FB



TS200FB

Part Number	Description	Use With
ACH	Auxiliary contact holder. Maximum capacity: 8 switches. REQUIRED when using AC3 or AC4.	FBJ30 thru FBJ200
AC3	Auxiliary contact. One N.O. contact. 10 A. 600 VAC. REQUIRES ACH. Please purchase separately.	All FUSERBLOC switches
AC4	Auxiliary contact. One N.C. contact. 10 A. 600 VAC. REQUIRES ACH. Please purchase separately.	All FUSERBLOC switches
TL100	Terminal lug kit, Aluminum, tin-plated, 2/0 to #14, 6 lugs per kit	FBJ100
TL200	Terminal lug kit, Aluminum, tin-plated, 3/0 to #6, 6 lugs per kit	FBJ200
TS100FB*	Terminal shroud kit, Use with 100 amp fusible switch, 3 shrouds per kit. Use on line or load side.	FBJ100
TS200FB*	Terminal shroud kit, Use with 200 amp fusible switch, 3 shrouds per kit. Use on line or load side.	FBJ200

*Note: Line side terminal shroud supplied standard with switch.