

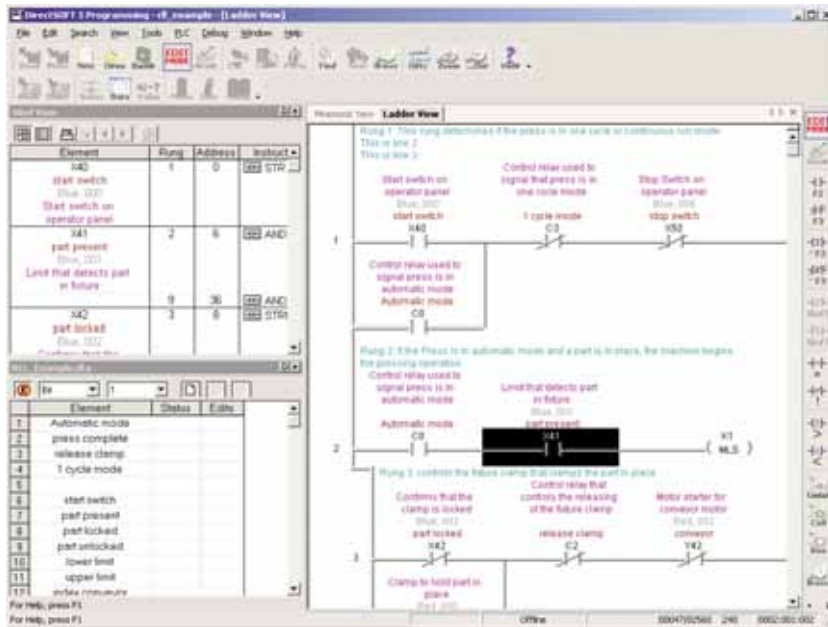
# DL205 Programming Tools and Cables

## Selecting a programming device

There are two tools for programming the DL205 CPUs: **DirectSOFT** PC-based programming software and the D2-HPP handheld programmer.

### DirectSOFT programming software

Our powerful Windows-based programming package makes it easy for you to program and monitor your DL205 PLC system. See the Software section in this catalog for detailed information on **DirectSOFT**.



DirectSoft Part Number	Description
<b>PC-DSOFT5</b>	Programs all <b>DirectLOGIC</b> PLC CPUs; offers <b>IBox</b> intelligent instructions
<b>PC-DS100</b>	Free version of <b>DirectSOFT</b> ; programs all <b>DirectLOGIC</b> PLC CPUs; limited to 100 word program

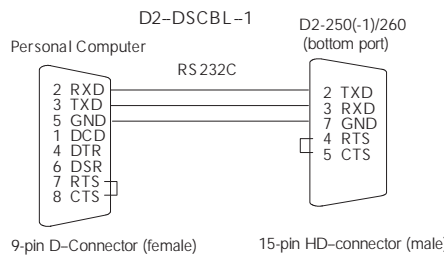
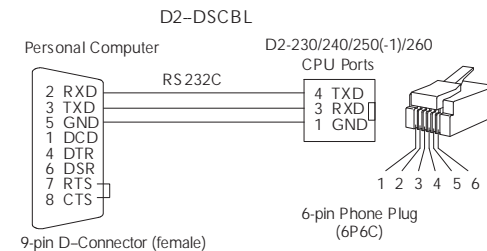
Note: The D2-260 requires **DirectSOFT** version 4.0 or later

## DL205 programming cables

Choose the proper cable to connect the DL205 CPU to your PC running **DirectSoft**.

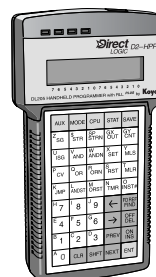
CPU	Port	Cable
D2-230	Only one	D2-DSCBL
D2-240	Top port	D2-DSCBL
	Bottom port	D2-DSCBL
D2-250-1	Top port	D2-DSCBL
	Bottom port	D2-DSCBL-1
D2-260	Top port	D2-DSCBL
	Bottom port	D2-DSCBL-1

Pin labeling conforms to IBM DTE and DCE standards



## Handheld programmer

The D2-HPP handheld programmer connects to an RJ12 phone jack port on any of the DL205 CPUs. The handheld unit contains a zero force insertion socket that can be used to store programs on an optional EEPROM. Can be used with DL05, DL06, DL105, DL205, and D3-350 models.



**D2-HPP Handheld programmer, cable included (DV-1000CBL)**