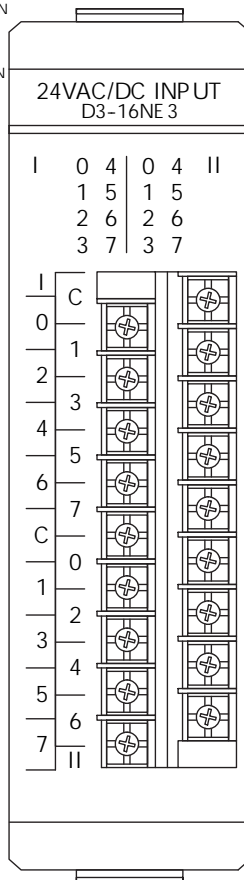
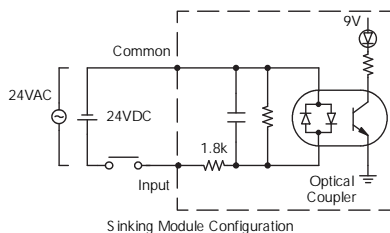
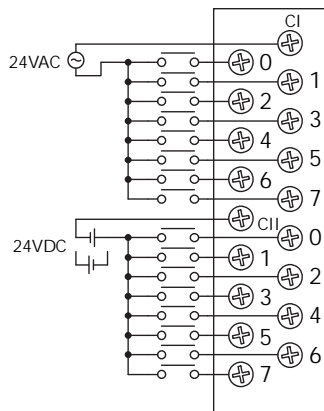
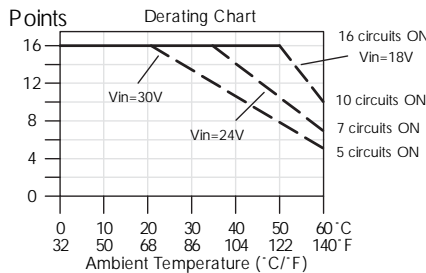


# AC/DC Input Modules

D3-16NE3 AC/DC Input <---->	
<b>Inputs per Module</b>	16 (sink/source)
<b>Commons per Module</b>	2 (isolated)
<b>Input Voltage Range</b>	14-30VAC/VDC
<b>Input Voltage</b>	External
<b>Peak Voltage</b>	30VAC/VDC
<b>AC Frequency</b>	47-63Hz
<b>ON Voltage Level</b>	>14V
<b>OFF Voltage Level</b>	<3V
<b>Input Impedance</b>	1.8Kohm
<b>Input Current</b>	16mA Max
<b>Minimum ON Current</b>	7mA
<b>Maximum OFF Current</b>	2mA
<b>Base Power Required</b>	9V 2.5mA+4.5mA/ON pt. (130mA max) 24V N/A
<b>OFF to ON Response</b>	AC 5-30ms DC 5-25 ms
<b>ON to OFF Response</b>	AC 5-30ms DC 5-25 ms
<b>Terminal Type</b>	Removable
<b>Status Indicators</b>	Logic side
<b>Weight</b>	6oz. (170g)



See the Terminal Blocks & Wiring section in this catalog for part numbers of ZIPLinks cables and terminal blocks compatible with this module.

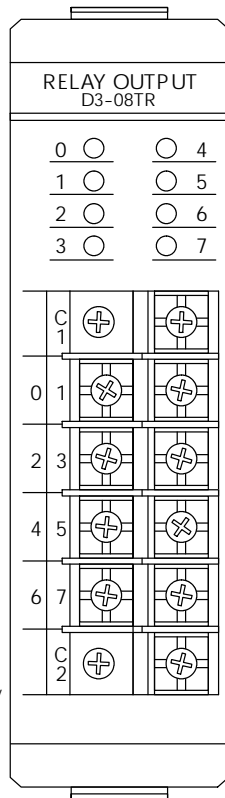
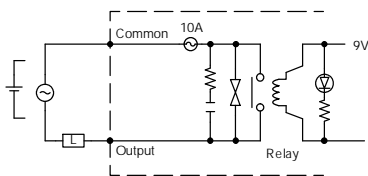
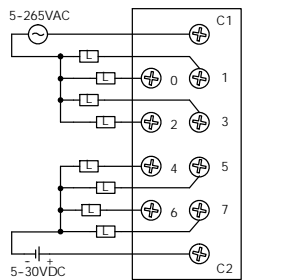
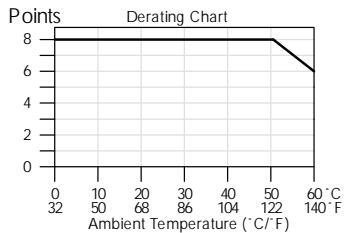
# Relay Output Modules

D3-08TR Relay Output <---->	
<b>Outputs per Module</b>	8
<b>Commons per Module</b>	2 (isolated)
<b>Operating Voltage</b>	5-265VAC 5-30VDC
<b>Output Type</b>	Form A (SPST)
<b>Peak Voltage</b>	265VAC/30VDC
<b>AC Frequency</b>	47-63Hz
<b>ON Voltage Drop</b>	N/A
<b>Max. Current</b>	4A/point AC 5A/point DC 6A/common
<b>Max Leakage Current</b>	1mA @ 220VAC
<b>Max Inrush Current</b>	5A
<b>Minimum Load</b>	5mA @ 5V
<b>Base Power Required</b>	9V 45mA/ON pt. (360 mA max) 24V N/A
<b>OFF to ON Response</b>	5ms
<b>ON to OFF Response</b>	5 ms
<b>Terminal Type</b>	Non-removable
<b>Status Indicators</b>	Logic side
<b>Weight</b>	7oz. (200g)
<b>Fuses</b>	2 (one 10A per common) Order D3-FUSE-5 (5 per pack) <---->

D3-16TR Relay Output <---->	
<b>Outputs per Module</b>	16
<b>Commons per Module</b>	2 (isolated)
<b>Operating Voltage</b>	5-265VAC 5-30 VDC
<b>Output Type</b>	16 Form A (SPST)
<b>Peak Voltage</b>	265VAC/30VDC
<b>AC Frequency</b>	47-63Hz
<b>ON Voltage Drop</b>	N/A
<b>Max. Current</b>	2A/point AC/DC (resistive) 8A/common AC/DC
<b>Max Leakage Current</b>	0.1mA @ 220VAC
<b>Max Inrush Current</b>	2A
<b>Minimum Load</b>	5mA @ 5V
<b>Base Power Required</b>	9V 30mA/ON pt. (480 mA max) 24V N/A
<b>OFF to ON Response</b>	12ms
<b>ON to OFF Response</b>	12ms
<b>Terminal Type</b>	Removable
<b>Status Indicators</b>	Logic side
<b>Weight</b>	8.5oz. (248g)
<b>Fuses</b>	None

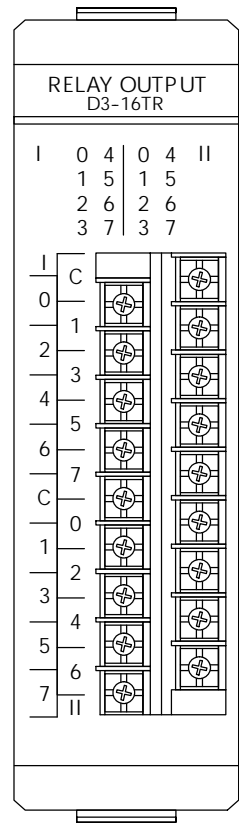
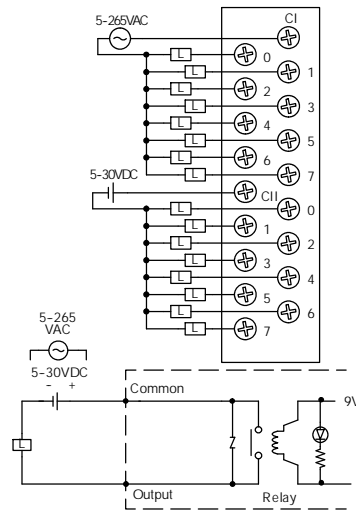
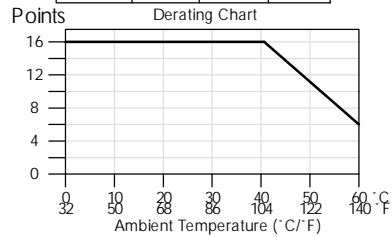
Typical Relay Life (Operations)

Voltage	Resistive	Solenoid	Closures
220VAC	4A	0.5A	100k
220VAC	0.05A		800k
110VAC	4A	0.5A	100k
110VAC	0.1A		122
110VAC	0.1A		650k
24VDC	5A	0.5A	100k



Typical Relay Life (Operations)

Voltage	Resistive	Solenoid	Closures
220VAC	2A	0.25A	100k
220VAC	0.03A		800k
110VAC	2A	0.25A	100k
110VAC	0.05A		650k
24VDC	2A	0.25A	100k



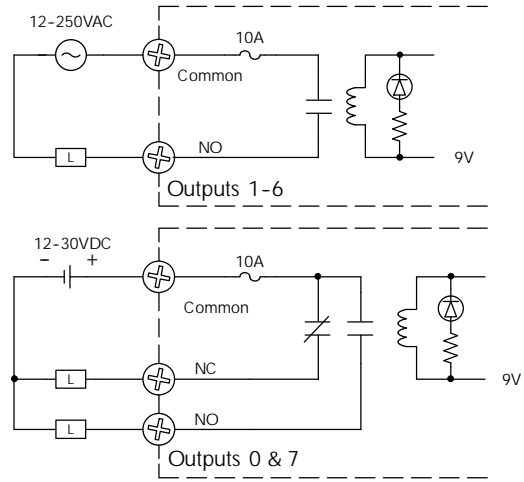
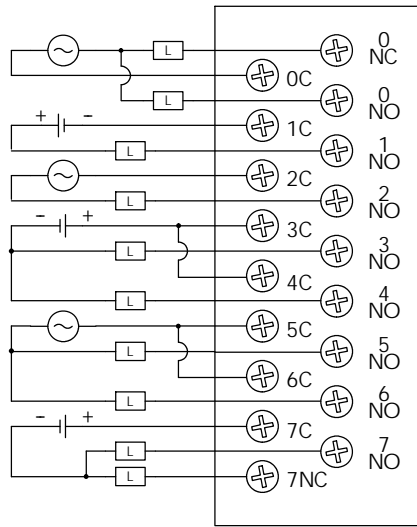
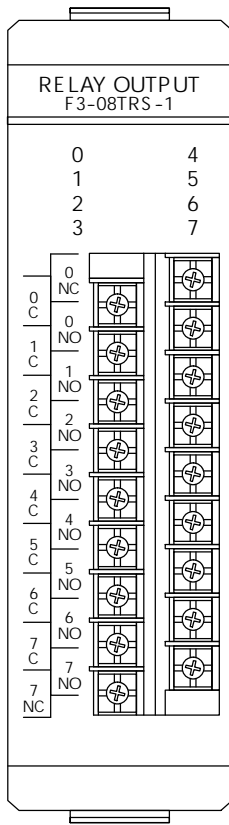
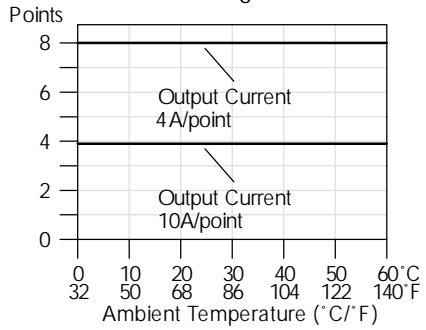
# Relay Output Modules

F3-08TRS-1 Relay Output <--->	
<b>Outputs per Module</b>	8
<b>Commons per Module</b>	8 (isolated)
<b>Operating Voltage*</b>	12-125VAC 125-250VAC (requires external fuses) 12-30VDC
<b>Output Type</b>	6 Form A (SPST), 2 Form C (SPDT)
<b>Max Current (resistive)</b>	10A/point AC/DC, 32A/module AC/DC
<b>Max leakage Current</b>	N/A
<b>Max Inrush Current</b>	10A inductive
<b>Minimum Load</b>	100mA @ 12VDC
<b>Base Power Required</b>	9V 37mA/ON pt., (296mA max), 24V N/A
<b>OFF to ON Response</b>	13ms max
<b>ON to OFF Response</b>	9ms max
<b>Terminal Type</b>	Removable
<b>Status Indicators</b>	Logic side
<b>Weight</b>	8.9oz. (252 g)
<b>Fuses</b>	8 fuses (10A, 125V), Non-replaceable
<b>Peak Voltage</b>	265VAC/120VDC
<b>AC Frequency</b>	47-63Hz
<b>ON Voltage Drop</b>	N/A

Max. Resistive or Inductive Inrush Load Current	Operating Voltage		
	28VDC	120VAC	240VAC
1/4HP		25K	
10.0A	50K	50K	
5.0A	200K	100K	
3.0A	325K	125K	50K
.05A	> 50M		

\*Maximum DC voltage rating is 120VDC at .5 Amp, 30,000 cycles typical. Motor starters up to and including NEMA size 4 can be used with this module.

Derating Chart



- PLC Overview
- DL05/06 PLC
- DL105 PLC
- DL205 PLC
- DL305 PLC**
- DL405 PLC
- Field I/O
- Software
- C-more HMIs
- Other HMI
- AC Drives
- Motors
- Steppers/Servos
- Motor Controls
- Proximity Sensors
- Photo Sensors
- Limit Switches
- Encoders
- Current Sensors
- Pushbuttons/Lights
- Process
- Relays/Timers
- Comm.
- TB's & Wiring
- Power
- Circuit Protection
- Enclosures
- Appendix
- Part Index

# Relay Output Modules

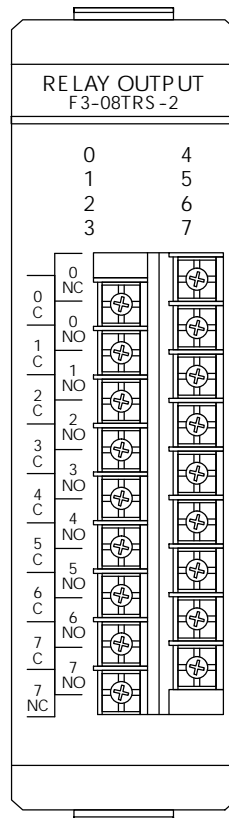
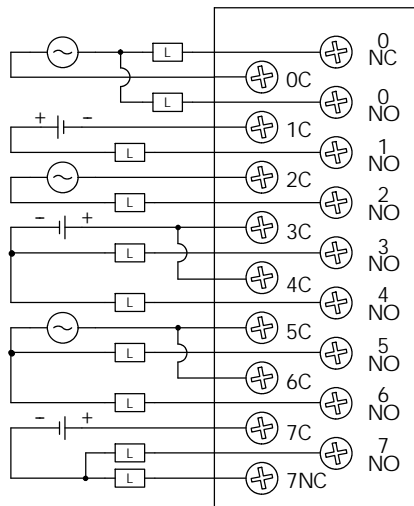
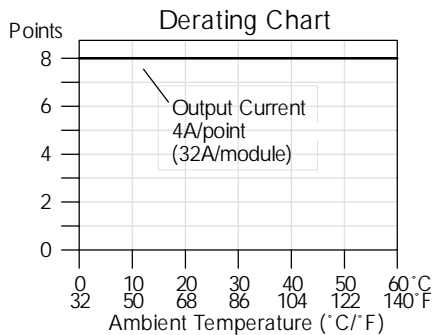
F3-08TRS-2 Relay Output <---->	
<b>Outputs per Module</b>	8
<b>Commons per Module</b>	8 (isolated)
<b>Operating Voltage*</b>	12-250VAC 12-30 VDC
<b>Output Type</b>	6 Form A (SPST), 2 Form C (SPDT)
<b>Peak Voltage</b>	265VAC/ 120VDC
<b>AC Frequency</b>	47-63Hz
<b>ON Voltage Drop</b>	N/A
<b>Max Current (Resistive)</b>	4A/point AC/DC, 32A/module AC/DC
<b>Max Leakage Current</b>	N/A

\*Maximum DC voltage rating is 120VDC at 0.5 Amp, 30,000 cycles typical.

Motor starters up to and including NEMA size 3 can be used with this module.

<b>Max Inrush Current</b>	10A inductive
<b>Minimum Load</b>	100mA @ 12VDC
<b>Base Power Required</b>	9V 37mA/ON pt. (296 mA Max), 24V N/A
<b>OFF to ON Response</b>	13ms max
<b>ON to OFF Response</b>	9ms max
<b>Terminal Type</b>	Removable
<b>Status Indicators</b>	Logic side
<b>Weight</b>	9oz. (255 g)
<b>Fuses</b>	8 fuses (10A, 125V), replaceable Order D3-FUSE-6 (5 per pace) <----> or use 19379-K-10A Wickman

Max. Resistive or Inductive Inrush Load Current	Typical Relay Life		
	Operating Voltage		
	28VDC	120VAC	240VAC
5.0A	200K	100K	
3.0A	325K	125K	50K
0.5A	>50M		



Expected mechanical relay life is 100 million operations.

