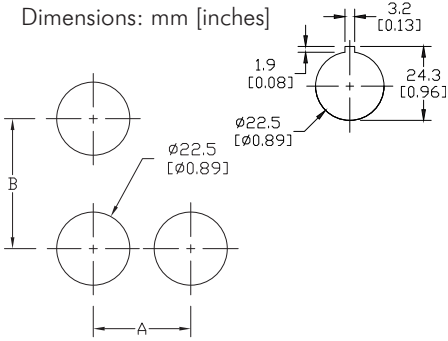
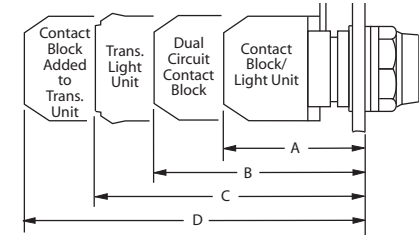


Mounting



Back-of-panel extensions

Note: This view is to show dimensions only. Contact blocks are not stackable.

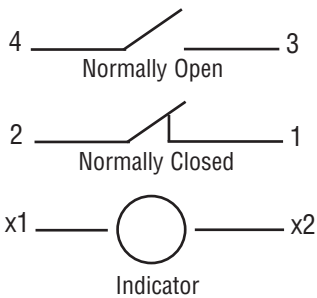


| Minimum Spacing — mm [inches] | | |
|--|------------|-----------|
| Size/Type of Operator | Dimensions | |
| | A | B |
| All types up to 30 (1.18) dia. including knob and key operated selector switches — except those listed below | 30 (1.18) | 50 (1.97) |
| Three-way adapter | | |
| 50 (1.97) dia. operators | 55 (2.16) | 55 (2.16) |
| Large yellow round legend plate - 70 (2.76) diameter | 75 (2.95) | 50 (1.97) |

| Approximate Dimensions — mm [inches] | | | |
|--|----------------------------|------------------------|---|
| A | B | C | D |
| Single circuit block — full voltage and resistor units | Dual circuit contact block | Transformer light unit | Transformer light unit and single circuit contact block |
| Pushbuttons (All Types and Push-Pull) | | | |
| 51 [2.0] | 66 (2.6) | 74 (2.91) | 94 (3.7) |
| Key and Knob Selector Switches | | | |
| 57 [2.2] | 72 (2.83) | 80 (3.15) | 99 (3.9) |

Control Circuit Contact Electrical Ratings and Wiring

Typical Wiring



| NEMA Mechanical Switching Ratings and Test Values for DC Control Circuit Contacts | | | | | |
|---|-------------------------------------|--------------------------------------|-----------|------------------|--------------|
| Contact Rating Designation | Thermal Continuous Test Current (A) | Maximum Make or Break DC Current (A) | | | Volt amperes |
| | | 125 Volts | 250 Volts | 301 to 600 Volts | |
| P300 | 5.0 | 1.1 | 0.55 | --- | 138 |
| P600 | 5.0 | 1.1 | 0.55 | 0.20 | 138 |
| Q300 | 2.5 | 0.55 | 0.27 | --- | 69 |
| Q600 | 2.5 | 0.55 | 0.27 | 0.10 | 69 |
| R300 | 1.0 | 0.22 | 0.11 | --- | 28 |

This chart is provided as a guideline only, and the ratings and values are not guaranteed to be accurate. It is the users' responsibility to properly size their control circuit devices. The chart values are from NEMA Standard ICS 5-2000, Table 1-4-2.

| NEMA Mechanical Switching Ratings and Test Values for AC Control Circuit Contacts | | | | | | | | | | | |
|---|-------------------------------------|---------------------------------|-------|-----------|-------|-----------|-------|-----------|-------|--------------|-------|
| Contact Rating Designation | Thermal Continuous Test Current (A) | Maximum AC Current, 50/60Hz (A) | | | | | | | | Volt amperes | |
| | | 120 Volts | | 240 Volts | | 480 Volts | | 600 Volts | | | |
| | | Make | Break | Make | Break | Make | Break | Make | Break | Make | Break |
| A300 | 10 | 60 | 6.00 | 30 | 3.00 | --- | --- | --- | --- | 7200 | 720 |
| A600 | 10 | 60 | 6.00 | 30 | 3.00 | 15 | 1.50 | 12 | 1.20 | 7200 | 720 |
| B300 | 5 | 30 | 3.00 | 15 | 1.50 | --- | --- | --- | --- | 3600 | 360 |
| B600 | 5 | 30 | 3.00 | 15 | 1.50 | 7.5 | 0.75 | 6 | 0.60 | 3600 | 360 |
| C600 | 2.5 | 15 | 1.5 | 7.5 | 0.75 | 3.75 | 0.375 | 3.00 | 0.30 | 1800 | 180 |

This chart is provided as a guideline only, and the ratings and values are not guaranteed to be accurate. It is the users' responsibility to properly size their control circuit devices. The chart values are from NEMA Standard ICS 5-2000, Table 1-4-1.