

The HT800 family of 30.5 mm pushbutton devices includes momentary, illuminated and mushroom-head pushbuttons, selector switches, indicating lights and push-pull switches.

Features

- Anodized aluminum mounting rings
- Watertight double V-gasket seals
- Extended height bulbs
- Transparent housing contact blocks
- Color-coded contact blocks
- Gold-plated contacts (on low voltage contact block)
- Reliability ridge on movable contact
- Stackable screw-mounted contact blocks
- Contact blocks can be mounted in left/right or top/bottom positions
- Standard N.C. contact opens before N.O. contact closes (break before make operation)
- Bright and long lasting LED indicating lights in six colors
- Field convertible maintained selector switches from two-position to three-position and vice versa
- Field selectable knob/lever mounting positions – at any 22.5° increment

Benefits

- Corrosion resistant NEMA 4X finish
- Watertight and oil-tight NEMA 4, 13 ingress protection
- Increased side illumination of indicating lights and illuminated pushbuttons
- Easy visual inspection of contact conditions
- Easily identifiable N.O. (white) or N.C. (black) contact blocks
- Gold-plated contacts suitable for logic level circuits
- Reliability ridge penetrates contamination buildup on stationary contacts
- Left/right or top/bottom mounted contact blocks allow correct positioning in retrofit applications
- All-purpose selector switches are convertible and can rotate in 22.5° increments to suit panel layouts

Standards and Certifications

- UL508, File No. E131568
- CSA C22.2 No. 14, File No. LR68551

Ingress Protection

- UL (NEMA) 1, 2, 3, 3R, 4, 4X, 12 and 13 when mounted in similarly rated enclosures

HT800 — Specifications	
Mechanical Ratings	
Frequency of Operation	
Pushbuttons	6,000 Operations per hour
Selector Switches	3,000 Operations per hour
Push-Pull Operators	3,000 Operations per hour
Mechanical Endurance/Life	
Pushbuttons	10 x 10 ⁶ Operations 6K Ops/Hr with 6 NO on left and 6 NC on right
Selector Switches	250 x 10 ³ Operations 3K Ops/Hr with 2 NO on left and 2 NC on right
Push-Pull Operators	250 x 10 ³ Operations 3K Ops/Hr with 6 NO on left and 6 NC on right
Environmental Specifications	
Operating Temperature	10° to 140°F (-12° to 60°C)
Storage Temperature	-40° to 176°F (-40° to 80°C)
Altitude	6,562 ft. (2,000m)
Humidity	95% RH @ 60°C
Terminals	
Contact Blocks	#6-32 posi-drive saddle clamp type, 1 x 16 AWG to 2 x 14 AWG, 12 in-lbs max.
Light Units	#6-32 posi-drive saddle clamp type, 1 x 22 AWG to 2 x 14 AWG, 7 in-lbs max.

HT800 Standard Contact Blocks UL (NEMA) Rating				
Electrical Ratings Description/Function	Contact Type	Catalog Number	AC	DC
Standard Normally Open contact	NO	HT8A	A600 ¹	P600 ²
Standard Normally Closed contact	NC	HT8B	A600 ¹	P600 ²
Normally Open Early Make Contact will make circuit before standard NO contact. DC ratings do not apply.	NOEM	HT8C	A600 ¹	—
Normally Closed Late Break contact will open after standard NC contact. DC ratings do not apply.	NCLB	HT8D	A600 ¹	—
Logic level, low voltage NO contact. Gold plated contacts.	NO	HT8E	5V 1 mA (minimum) 28V 500 mA (maximum)	

Note: 1 - Heavy duty
2 - Standard duty

UL (NEMA) A600 and P600 Ratings							
Description	Volts AC 50/60 Hz				Volts DC ³		
	120	240	480	600	125	250	600
Make and Emerg. Interrupting Capacity (Amp)	60	30	15	12	1.1	0.55	0.2
Normal Load Break (Amp)	6	3	1.5	1.2	1.1	0.55	0.2
Thermal Current (Amp)	10	10	10	10	5	5	5
Voltamperes:							
Make and Emerg. Interrupting Capacity	7200	7200	7200	7200	138 ⁴	138 ⁴	138 ⁴
Normal Load Break	720	720	720	720	138	138	138

Note: 3: DC ratings do not apply to NOEM (Normally Open Early Make) and NCLB (Normally Closed Late Break) contact blocks HT8C and HT8D.

4: Maximum make or break volt-amperes at 300V or less

HT800 30 mm Extended Illum. Pushbuttons


Red
HT8GBRV7

Green
HT8GBGV7

Amber
HT8GBAV7

Clear
HT8GBCV7

White
HT8GBWV7

Yellow
HT8GBYV7

Blue
HT8GBBV7

Contact Configuration	24 Volt Incandescent full Voltage Lamp 50mA @ 24 Volts	Price	120 Volt Incandescent Full Voltage Lamp 19mA @ 120 Volts	Price
Red Lens				
Operator only	HT8GBRV3	<-->	HT8GBRV7	<-->
1 N.O.	*HT8GBRAV3	<-->	*HT8GBRAV7	<-->
1 N.C.	*HT8GBRBV3	<-->	*HT8GBRBV7	<-->
Green Lens				
Operator only	HT8GBGV3	<-->	HT8GBGV7	<-->
1 N.O.	*HT8GBGAV3	<-->	*HT8GBGAV7	<-->
1 N.C.	*HT8GBGBV3	<-->	*HT8GBGBV7	<-->
Amber Lens				
Operator only	HT8GBAV3	<-->	HT8GBAV7	<-->
1 N.O.	*HT8GBAAV3	<-->	*HT8GBAAV7	<-->
1 N.C.	*HT8GBABV3	<-->	*HT8GBABV7	<-->
Clear Lens				
Operator only	HT8GBCV3	<-->	HT8GBCV7	<-->
1 N.O.	*HT8GBCAV3	<-->	*HT8GBCAV7	<-->
1 N.C.	*HT8GBCBV3	<-->	*HT8GBCBV7	<-->
White Lens				
Operator only	HT8GBWV3	<-->	HT8GBWV7	<-->
1 N.O.	*HT8GBWAV3	<-->	*HT8GBWAV7	<-->
1 N.C.	*HT8GBWBV3	<-->	*HT8GBWBV7	<-->
Yellow Lens				
Operator only	HT8GBYV3	<-->	HT8GBYV7	<-->
1 N.O.	*HT8GBYAV3	<-->	*HT8GBYAV7	<-->
1 N.C.	*HT8GBYBV3	<-->	*HT8GBYBV7	<-->
Blue Lens				
Operator only	HT8GBBV3	<-->	HT8GBBV7	<-->
1 N.O.	*HT8GBBAV3	<-->	*HT8GBBAV7	<-->
1 N.C.	*HT8GBBBV3	<-->	*HT8GBBBV7	<-->
Spare Incandescent Lamps For HT8 Series				
Spare lamp	HT8BULBV3	<-->	HT8BULBV7	<-->

See page 22-56 for accessories.

Notes: A grounding kit is included with each operator or switch assembly.

Part numbers with an * are kitted from individual components at AUTOMATIONDIRECT. The individual components are picked and shipped in the same shipping box. Final assembly of the individual components must be done by the customer. Lens not sold separately.

HT800 30 mm Extended Illum. Pushbuttons

PLC Overview

DL05/06 PLC

DL105 PLC

DL205 PLC

DL305 PLC

DL405 PLC

Field I/O

Software

C-more HMIs

Other HMI

AC Drives

Motors

Steppers/Servos

Motor Controls

Proximity Sensors

Photo Sensors

Limit Switches

Encoders

Current Sensors

Pushbuttons/Lights

Process

Relays/Timers

Comm.

TB's & Wiring

Power

Circuit Protection

Enclosures

Appendix

Part Index

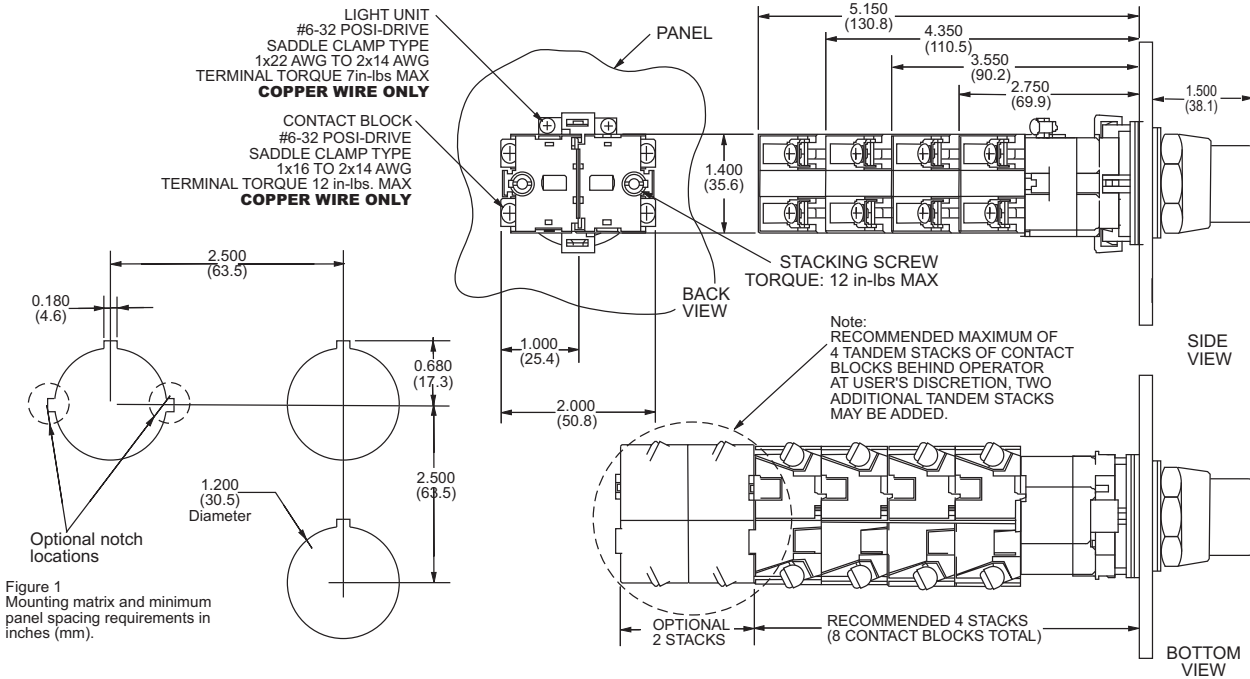


Figure 2
Back, Side and Bottom views of pushbutton operator with attached contact blocks.

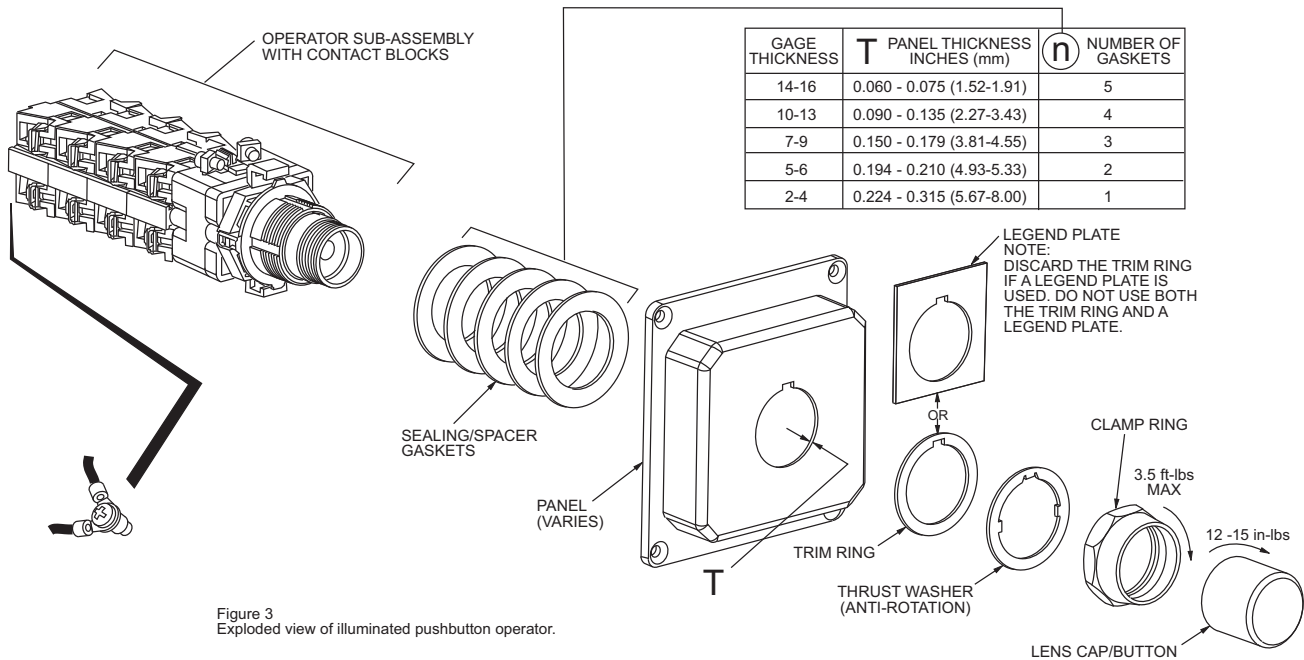


Figure 3
Exploded view of illuminated pushbutton operator.