

Edison Comb-Bus Bars



Features

- Easily distribute power in single-phase or three-phase configurations
- Flexible cut-to length solutions without compromising on the product's finger-safe features
- 10kA (default) SCCR
- 100kA SCCR (Short Circuit Current Rating) when protected by a 200A Class J fuse
- Single-phase bus bars rated to 1000VDC/600VAC and 100A configuration
- Three-phase bus bars rated to 600VAC/DC and 100A configuration
- Power feed terminals for single-phase and three-phase service

Note: Not to be used with older style CH series fuse holders.



Agency Approvals/Standards

- UL508, File E195399
- CE
- RoHS
- Reach

Comb-Bus Bar Selection Table

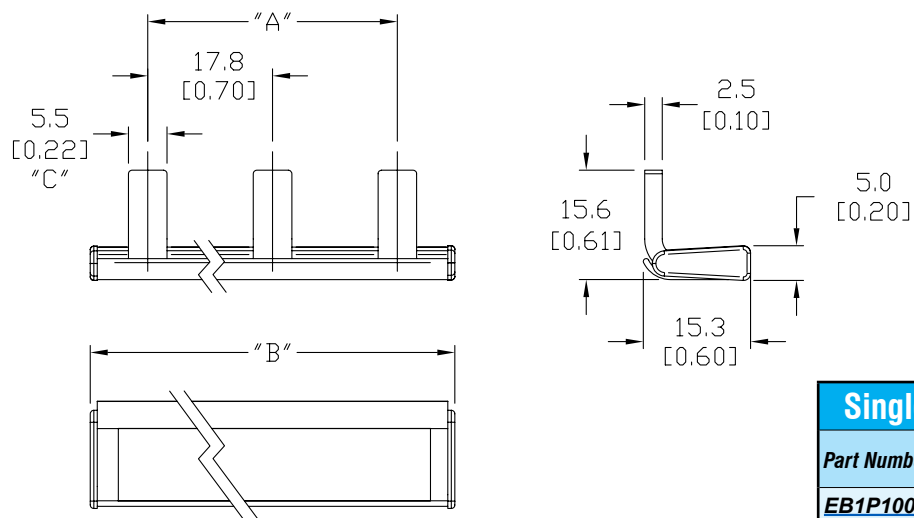
Part Number	Wiring Configuration	Maximum Voltage	Maximum Current	Endcap	# of Pins/Connections	Product Weight (lbs.)	Box Qty.	Price
EB1P100M3	Single-phase	600VAC 1000VDC	100A	Ships w/2 Endcaps	3	1.84	1	\$12.00
EB1P100M6					6	3.90		\$18.00
EB1P100M9					9	5.38		\$22.50
EB1P100M12					12	7.94		\$28.50
EB1P100M15					15	10.00		\$33.50
EB1P100M57				Sold separately (EECAP1P)	57	15.52	1	\$103.00
EB3P100M6	Three-phase	600VAC/DC	100A	Ships w/2 Endcaps	6	1.84	1	\$40.50
EB3P100M9					9	3.07		\$51.00
EB3P100M12					12	4.28		\$63.00
EB3P100M15					15	5.54		\$85.00
EB3P100M57				Sold separately (EECAPMP)	57	44.67	1	\$287.00

Comb-Bus Bars



Typical Single-Phase Dimensional Data

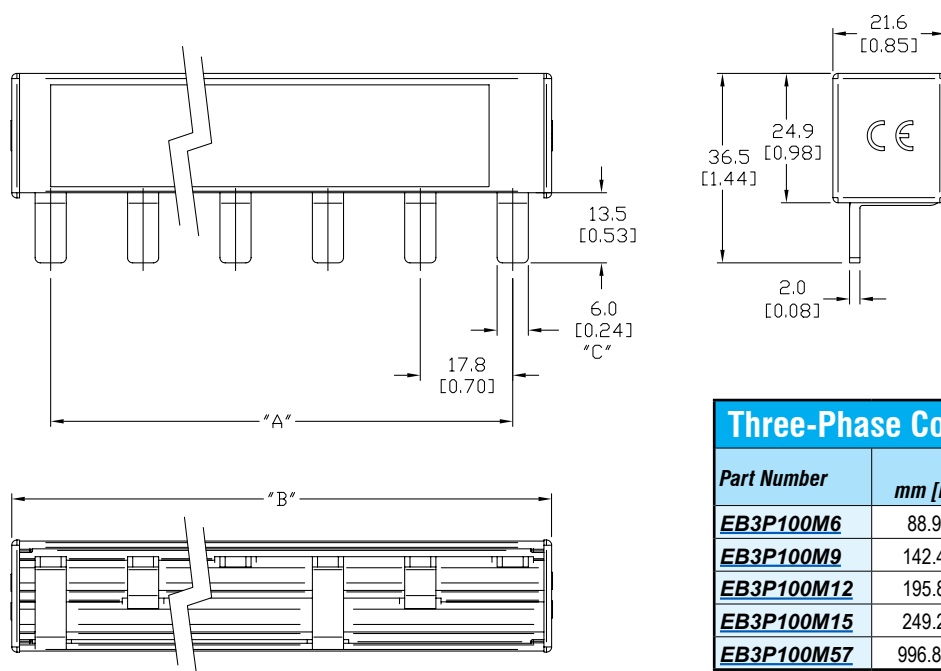
mm [inches]



Single-Phase Comb-Bus Bar Dimensions

Part Number	A mm [inches]	B mm [inches]	C # of pins
EB1P100M3	35.6 [1.40]	60.4 [2.38]	3
EB1P100M6	88.9 [3.50]	113.0 [4.45]	6
EB1P100M9	142.4 [5.61]	157.1 [6.19]	9
EB1P100M12	195.8 [7.71]	211.8 [8.33]	12
EB1P100M15	249.2 [9.81]	271.7 [10.70]	15
EB1P100M57	996.8 [39.24]	1011.2 [39.81]	57

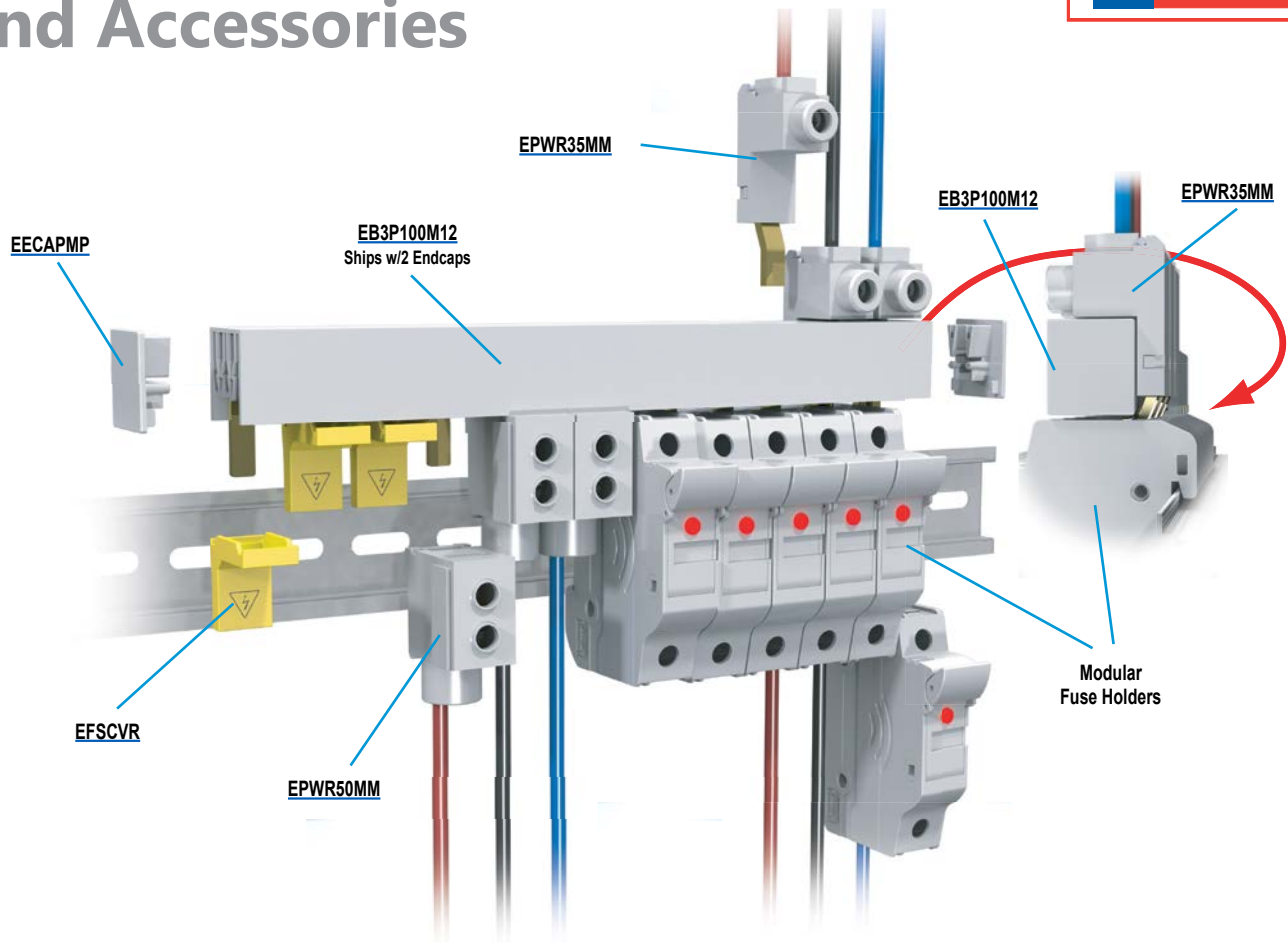
Typical Three-Phase Dimensional Data



Three-Phase Comb-Bus Bar Dimensions

Part Number	A mm [inches]	B inches [mm]	C # of Pins
EB3P100M6	88.9 [3.50]	103.7 [4.08]	6
EB3P100M9	142.4 [5.61]	158.4 [6.24]	9
EB3P100M12	195.8 [7.71]	213.3 [8.39]	12
EB3P100M15	249.2 [9.81]	265.0 [10.43]	15
EB3P100M57	996.8 [39.24]	1011.2 [39.81]	57

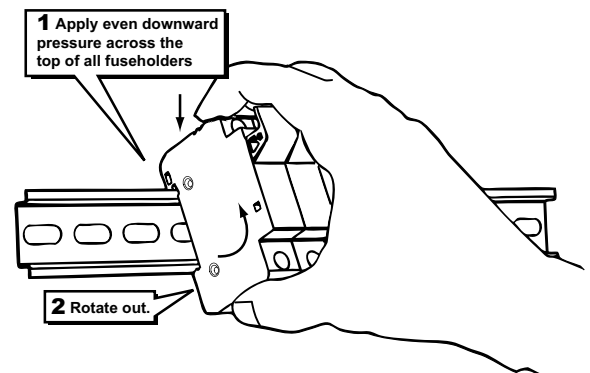
Comb-Bus Bar Installation and Accessories



Comb-Bus Bar Accessories

Part Number	Description	Product Weight (lbs)	Qty. Per Pack	Price
<u>EECAP1P</u>	Single-phase busbar endcap	0.02	50	\$63.00
<u>EECAP1P-10</u>			10	\$17.50
<u>EECAPMP</u>	Three-phase busbar endcap	0.22	50	\$77.00
<u>EECAPMP-10</u>			10	\$22.00
<u>EPWR35MM</u>	35mm² feeder terminal for three-phase busbar, wire range: 10-1/0 AWG CU, torque 50 lb-in, (115A, 1000VAC/DC)	0.68	10	\$140.00
<u>EPWR35MM-1</u>			1	\$20.50
<u>EPWR50MM</u>	50mm² direct feed terminal, wire range: 14-1 AWG CU, torque 35 lb-in, (115A, 1000VAC/DC)	0.61	10	\$169.00
<u>EPWR50MM-1</u>			1	\$24.50
<u>EFSCVR</u>	Spare contact safety protection covers	0.17	10	\$62.00
<u>EFSCVR-2</u>			2	\$18.50
<u>EPWR1PLP</u>	Single-phase low-profile feeder terminal, wire range: 10-1/0 AWG CU, torque 50 lb-in, (115A, 1000VAC/DC)	0.51	10	\$153.00
<u>EPWR1PLP-1</u>			1	\$23.00

DIN Rail Removal



Fuse Holder Accessories

Part Number	Description	Qty. Per Pack	Price
<u>JV-L (Not Field Installable)</u>	Multi-pole connection kit to connect multiple Class CC and Midget Class fuse holders together.	6 connectors 3 handle pins	\$12.50

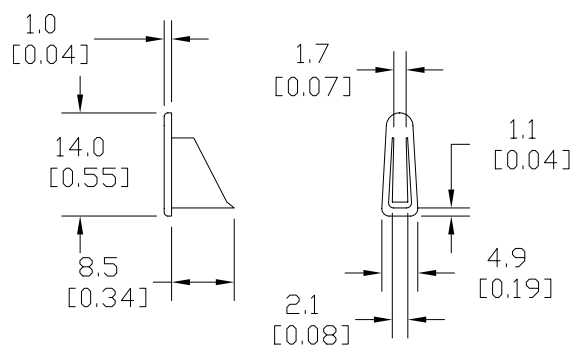


JV-L

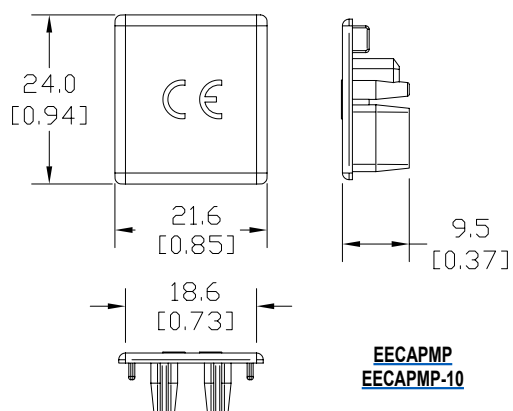
Comb-Bus Accessories

Dimensions

mm [inches]

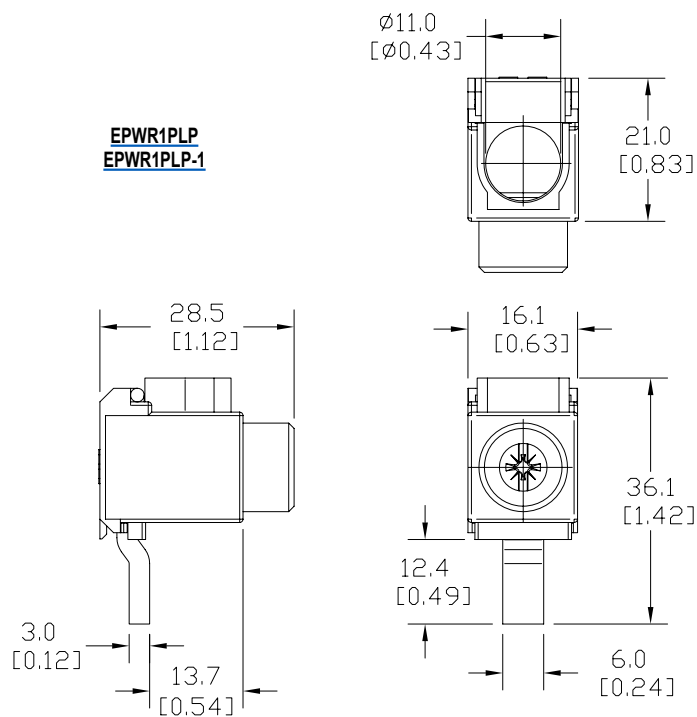


EECAP1P
EECAP1P-10

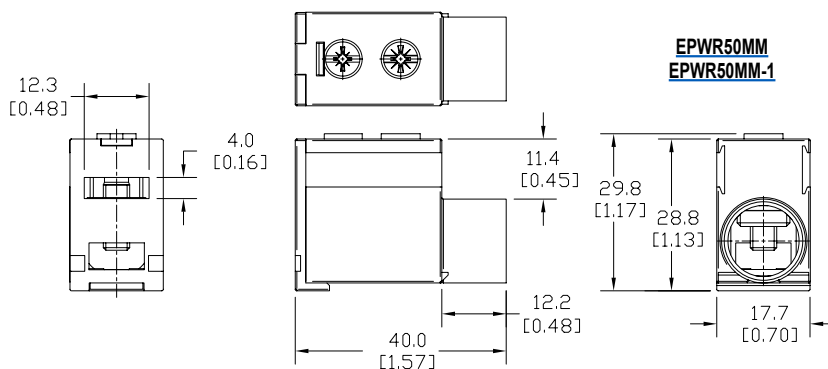


EECAPMP
EECAPMP-10

EPWR1PLP
EPWR1PLP-1



EPWR50MM
EPWR50MM-1



Comb-Bus Accessories

Dimensions

mm [inches]

