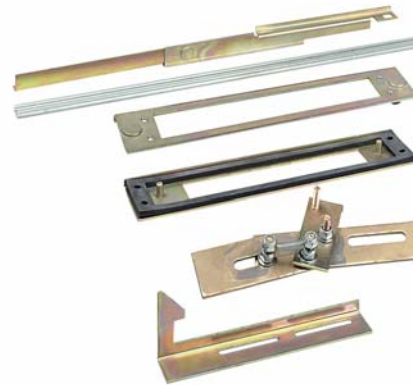


# Adapter Plates for Disconnect Enclosures

## OPERATOR ADAPTER PLATES

- Used on all Wiegmann disconnect enclosures with universal flange cutouts
- An operator adapter plate is required to install a disconnect in all Wiegmann WA series enclosures with a universal cutout.
- Operator adapters include an adapter plate and additional parts used to interlock the master door with the disconnect operating mechanism. Panel drilling and installation instructions are furnished with each adapter.
- Each brand and type of disconnect requires a different operator adapter. It is important to select the proper operator adapter and enclosure for the disconnect that you have selected.



| Operator Adapter Plates |       |   |
|-------------------------|-------|---|
| Part Number             | Price | Type of Operator Adapter  |
| <b>WA21ABA</b>          | <-->  | Allen-Bradley 1494F and 1494D   |
| <b>WA21ABVA</b>         | <-->  | Allen-Bradley 1494V   |
| <b>WA21CHVA</b>         | <-->  | Cutler-Hammer C361, C371 and C371 Flex Shaft™, AutomationDirect.com: F0S03C, F1S03/6C, F3S03C, F4S04C |
| <b>WA21CHVA</b>         | <-->  | ABB Controls  |
| <b>WA21GETDA</b>        | <-->  | General Electric STDA   |
| <b>WA21ITE</b>          | <-->  | I-T-E Max-Flex™   |
| <b>WA21SDA</b>          | <-->  | Square D Class 9422, (variable depth and cable mechanism)   |
| <b>WA21WHA</b>          | <-->  | Cutler Hammer/Westinghouse SM   |

## BLANK ADAPTER PLATES

- These adapter plates are used to cover flange cutouts in disconnect enclosures when disconnects are not installed. This greatly increases the versatility of the disconnect enclosures, enabling them to also be used as regular Type 12 enclosures.
- Wiegmann blank adapter plates are made from heavy gauge steel, with oil-resistant gasket to maintain the dust-tight and oil-tight qualities of the enclosure.
- All blank adapter plates are painted ANSI 61 gray polyester powder.
- All necessary mounting hardware and instructions are included.



| Blank Adapter Plates |       |   |
|----------------------|-------|---|
| Part Number          | Price | Type of Operator Adapter  |
| <b>WA21BAP</b>       | <-->  | Blank adapter for WA enclosures (hardware included)                   |
| <b>WA22BAP</b>       | <-->  | Blank adapter for ABN12 enclosures (hardware included)                |
| <b>WA3456BAP</b>     | <-->  | Blank adapter for SDN12, SN4 and SSN4X enclosures (hardware included) |

| Enclosure Shipping Schedule                          |            |            |         |
|--|------------|------------|---------|
| Same day   | 1 - 7 days | 1 -10 days | 15 days |
| Color indicates shipping lead time in business days. |            |            |         |

# Enclosure Accessories



## JIC and NEMA swing-out panel kits

- Designed to allow mounting of switches, pilot lights and other components near the front of the enclosure for easy access or meter reading
- These kits consist of heavy-gauge brackets and hinges, which are easily installed by drilling small holes in the sides of the enclosure and bolting the bracket in place

- Sealed washers are also furnished to ensure that the enclosure will meet the original NEMA rating after installation.
- These kits are designed for use with standard Wiegmann JIC and NEMA panels.

| Part Number    | Price | Description |
|----------------|-------|-------------|
| <b>WAJCDFK</b> | <---> | JIC kit     |
| <b>WANADFK</b> | <---> | NEMA kit    |

Note: Panels must be ordered separately from enclosure.

## Touch-up paint



Part Number: **WAGSE**

Price: <--->

ANSI-61 gray satin enamel in 12 oz. spray can. Use on existing enclosure and subpanel finishes.

## Mounting feet

Part Number: **N412MFK**

Price: <--->

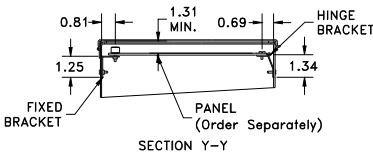
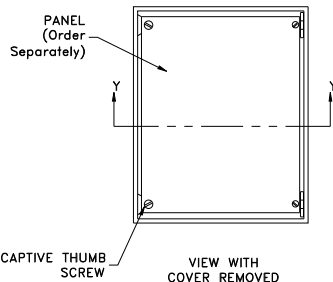
Part Number: **N412MFKSS**

Price: <--->

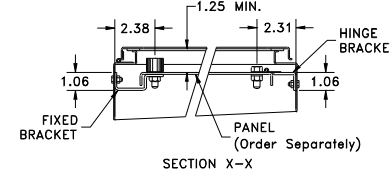
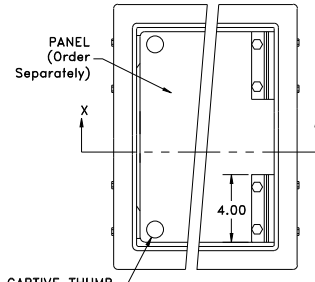
- N412MFK contains four steel external mounting feet
- N412MFKSS contains four stainless steel external mounting feet
- Sealing washers are provided with each kit to maintain NEMA 4 or 12 rating after installation
- N412MFK has a plated finish



### WAJCDFK



### WANADFK



## Print pockets

| Print Pockets    |       |   |
|------------------|-------|---|
| Part Number      | Price | Description   |
| <b>WAPPL0606</b> | <---> | 6"x6" plastic print pocket can be placed anywhere within enclosure using 2-way adhesive tape flanges. Color: white  |
| <b>WAPPL0810</b> | <---> | 8"x10" plastic print pocket can be placed anywhere within enclosure using 2-way adhesive tape flanges. Color: white |

| Enclosure Shipping Schedule                          |            |             |
|--|------------|-------------|
| Same day   | 1 - 7 days | 1 - 10 days |
| Color indicates shipping lead time in business days. |            |             |

# Enclosure Accessories



Enclosures for Electrical/Electronic Equipment

## Hole seals



Designed to seal extra pushbutton holes, conduit openings, and knockout openings from dirt, dust, oil and water.

Has quick wing nut and oil-resistant gasket. Steel hole seals are finished

with ANSI-61 gray polyester powder. Stainless steel hole seals have a grained finish.

## Casters

- Casters can be used on any enclosure to provide mobility
- Caster kit includes two swivel casters and two stationary casters, along with all necessary hardware
- Zinc-plated steel



## Panel supports

- Provide additional support for panels on which heavy instruments are mounted
- Adjustable so the weight of the panel is partially supported by the bottom of the enclosure
- White polyester powder finish



| Part No:<br>Steel Hole Seals | Price | Part No:<br>Stainless Steel Hole Seals | Price | Description                          | Hole Diameter |
|------------------------------|-------|--|-------|--------------------------------------|---------------|
| <b>WAS050</b>                | <---> | <b>WAS050SS</b>                        | <---> | 1/2 inch conduit holes               | 0.87 (22)     |
| <b>WAS075</b>                | <---> | <b>WAS075SS</b>                        | <---> | 3/4 inch conduit holes               | 1.14 (29)     |
| <b>WAS100</b>                | <---> | <b>WAS100SS</b>                        | <---> | 1 inch conduit holes                 | 1.38 (35)     |
| <b>WAS125</b>                | <---> | <b>WAS125SS</b>                        | <---> | 1-1/4 inch conduit holes             | 1.61 (41)     |
| <b>WAS150</b>                | <---> | <b>WAS150SS</b>                        | <---> | 1-1/2 inch conduit holes             | 2.00 (51)     |
| <b>WAS200</b>                | <---> | <b>WAS200SS</b>                        | <---> | 2 inch conduit holes                 | 2.52 (64)     |
| <b>WAS250</b>                | <---> | -                                      |       | 2-1/2 inch conduit holes             | 3.00 (76)     |
| <b>WAS300</b>                | <---> | -                                      |       | 3 inch conduit holes                 | 3.62 (92)     |
| <b>WAS350</b>                | <---> | -                                      |       | 3-1/2 inch conduit holes             | 4.13 (105)    |
| <b>WAS400</b>                | <---> | -                                      |       | 4 inch conduit holes                 | 4.64 (118)    |
| <b>WASPB</b>                 | <---> | <b>WASPBSS</b>                         | <---> | Standard oil tight pushbutton holes  | 1.18 (30)     |
| <b>WASPBG</b>                | <---> | <b>WASPBGSS</b>                        | <---> | Miniature oil tight pushbutton holes | 0.87 (22)     |

Note: Dimensions in inches (millimeters)

| Caster Kit Part No. | Price | Description  |
|---------------------|-------|--|
| <b>WC10C</b>        | <---> | Set of 4 casters, 2 mounting plates and hardware for WC10 consoles |
| <b>WC12C</b>        | <---> | Set of 4 casters, 2 mounting plates and hardware for WC12 consoles |

| Enclosure Shipping Schedule                          |            |             |
|--|------------|-------------|
| Same day   | 1 - 7 days | 1 - 10 days |
| Color indicates shipping lead time in business days. |            |             |

| Panel Support Part No. | Price | Description  |
|------------------------|-------|--|
| <b>WAPS03</b>          | <---> | Two panel supports for 1-door and 2-door enclosures where distance from bottom of panel to bottom of enclosure is less than 2-1/4 inches           |
| <b>WAPS09</b>          | <---> | Two panel supports for freestanding enclosures where distance from bottom of panel to bottom of enclosure is between 2-7/8 inches and 8-1/2 inches |