

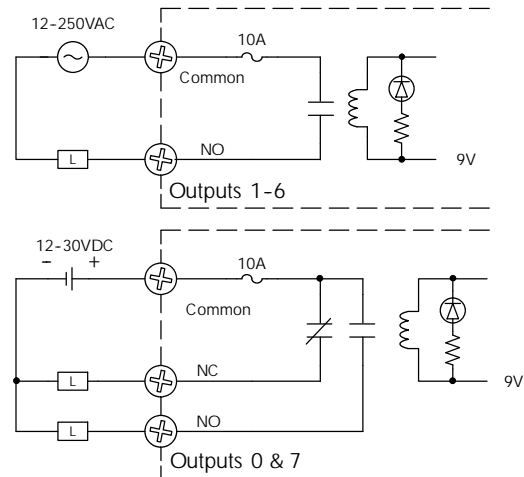
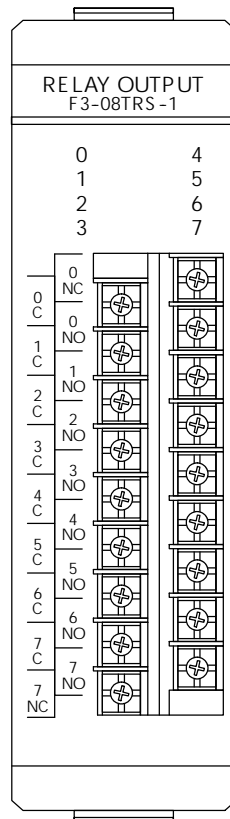
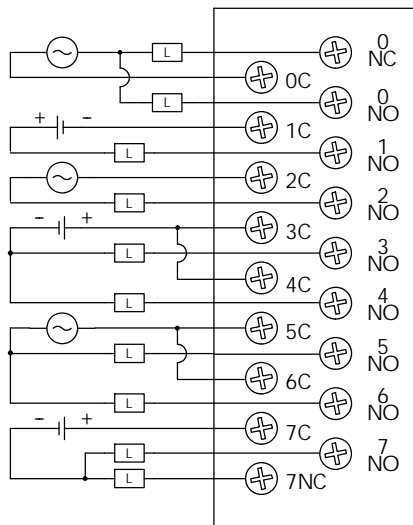
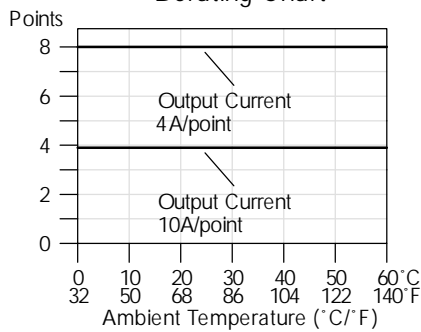
# Relay Output Modules

F3-08TRS-1 Relay Output <--->	
<b>Outputs per Module</b>	8
<b>Commons per Module</b>	8 (isolated)
<b>Operating Voltage*</b>	12-125VAC 125-250VAC (requires external fuses) 12-30VDC
<b>Output Type</b>	6 Form A (SPST), 2 Form C (SPDT)
<b>Max Current (resistive)</b>	10A/point AC/DC, 32A/module AC/DC
<b>Max leakage Current</b>	N/A
<b>Max Inrush Current</b>	10A inductive
<b>Minimum Load</b>	100mA @ 12VDC
<b>Base Power Required</b>	9V 37mA/ON pt., (296mA max), 24V N/A
<b>OFF to ON Response</b>	13ms max
<b>ON to OFF Response</b>	9ms max
<b>Terminal Type</b>	Removable
<b>Status Indicators</b>	Logic side
<b>Weight</b>	8.9oz. (252 g)
<b>Fuses</b>	8 fuses (10A, 125V), Non-replaceable
<b>Peak Voltage</b>	265VAC/120VDC
<b>AC Frequency</b>	47-63Hz
<b>ON Voltage Drop</b>	N/A

Max. Resistive or Inductive Inrush Load Current	Operating Voltage		
	28VDC	120VAC	240VAC
1/4HP		25K	
10.0A	50K	50K	
5.0A	200K	100K	
3.0A	325K	125K	50K
.05A	> 50M		

\*Maximum DC voltage rating is 120VDC at .5 Amp, 30,000 cycles typical. Motor starters up to and including NEMA size 4 can be used with this module.

Derating Chart



- PLC Overview
- DL05/06 PLC
- DL105 PLC
- DL205 PLC
- DL305 PLC**
- DL405 PLC
- Field I/O
- Software
- C-more HMIs
- Other HMI
- AC Drives
- Motors
- Steppers/Servos
- Motor Controls
- Proximity Sensors
- Photo Sensors
- Limit Switches
- Encoders
- Current Sensors
- Pushbuttons/Lights
- Process
- Relays/Timers
- Comm.
- TB's & Wiring
- Power
- Circuit Protection
- Enclosures
- Appendix
- Part Index