

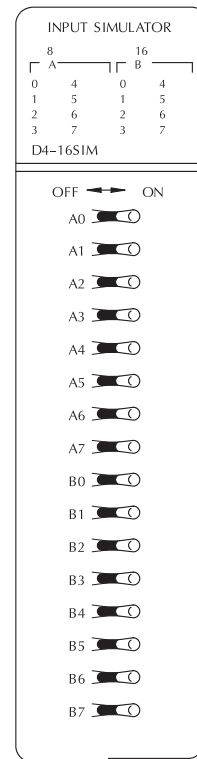
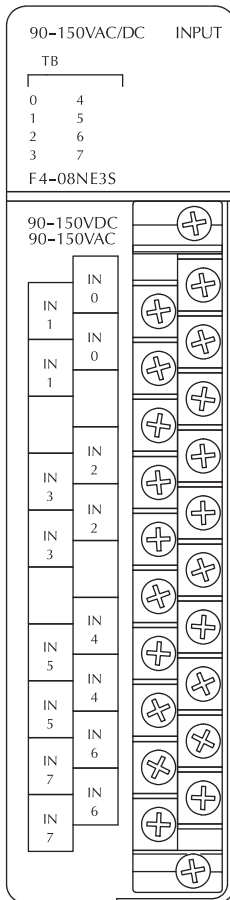
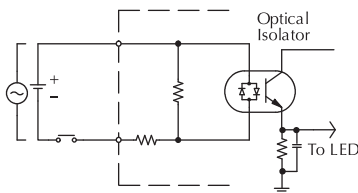
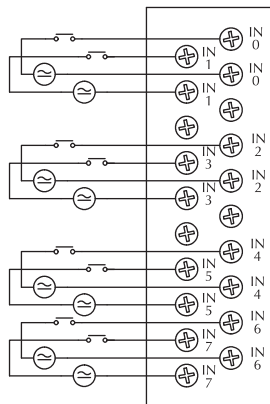
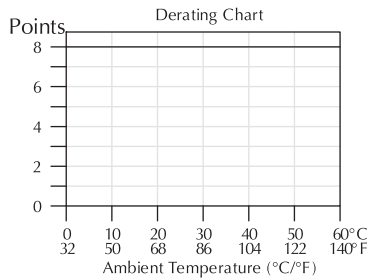
# AC/DC Input and Simulator Modules

F4-08NE3S AC/DC Input <-->	
<b>Inputs per Module</b>	8 (sink/source)
<b>Commons per Module</b>	8 (isolated)
<b>Input Voltage Range</b>	90-150VAC/VDC
<b>Peak Voltage</b>	350 peak < 1ms
<b>AC Frequency</b>	47-63Hz
<b>ON Voltage Level</b>	>90VDC/75VAC
<b>OFF Voltage Level</b>	<60VDC/45VAC
<b>Input Impedance</b>	22KΩ
<b>Input Current</b>	5.5mA @ 120V
<b>Minimum ON Current</b>	4mA
<b>Maximum OFF Current</b>	2mA
<b>Base Power Required 5V</b>	90mA max
<b>OFF to ON Response</b>	8ms
<b>ON to OFF Response</b>	15ms
<b>Terminal Type (included)</b>	Removable (D4-16IOCON)
<b>Status Indicators</b>	Logic side
<b>Weight</b>	9oz. (256g)

D4-16SIM Input Simulator <-->	
<b>Inputs per Module</b>	8 or 16 selectable by internal switch
<b>Base Power Required 5V</b>	150mA max
<b>Terminal Type</b>	None
<b>Status Indicators</b>	Logic side
<b>Weight</b>	8.8oz. (250g)

8 or 16 point selection switch is located on the back of the module  
8 or 16 point selection is indicated by the LEDs above the input switch status

See the Terminal Blocks & Wiring Solutions section in this catalog for part numbers of ZIPLink cables and terminal blocks compatible with this module.



- PLC Overview
- DL05/06 PLC
- DL105 PLC
- DL205 PLC
- DL305 PLC
- DL405 PLC**
- Field I/O
- Software
- C-more HMIs
- Other HMI
- AC Drives
- Motors
- Steppers/Servos
- Motor Controls
- Proximity Sensors
- Photo Sensors
- Limit Switches
- Encoders
- Current Sensors
- Pushbuttons/Lights
- Process
- Relays/Timers
- Comm.
- TB's & Wiring
- Power
- Circuit Protection
- Enclosures
- Appendix
- Part Index