

Relay Output Modules

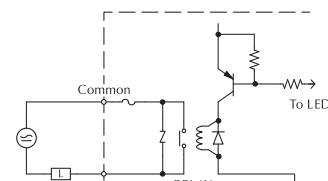
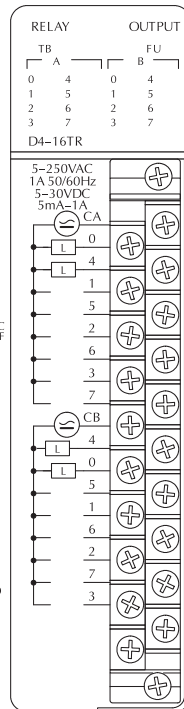
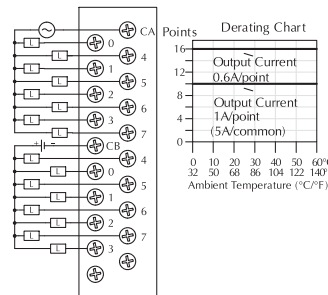
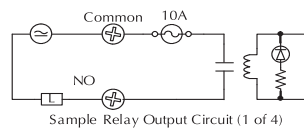
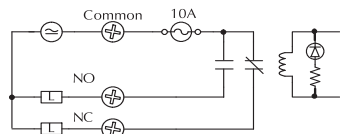
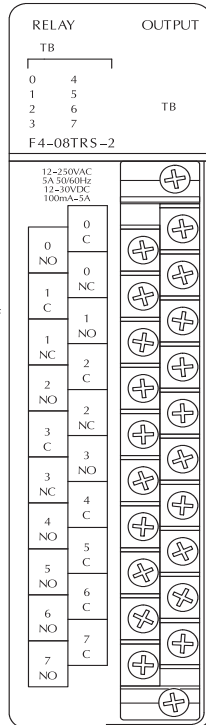
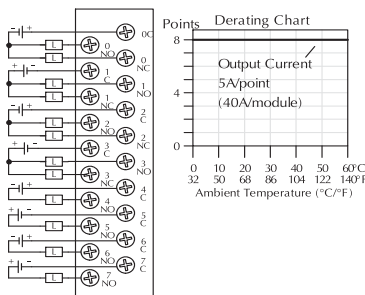
F4-08TRS-2 Relay Output <--->	
Outputs per Module	8 relays
Commons per Module	8 (isolated)
Operating Voltage	12-30VDC-12-250VAC
Output Type	4, Form C (SPDT) 4, Form A (SPST-NO)
Peak Voltage	30VDC/250VAC @ 5A
AC Frequency	47-63Hz
ON Voltage Drop	N/A
Max Current (Resistive)	5A/point 40A/module
Max Leakage Current	N/A
Max Inrush Current	10A
Minimum Load	100mA @ 12VDC
Base Power Required 5V	575mA max, 60mA/point
External DC Required	None
OFF to ON Response	7ms
ON to OFF Response	9ms
Terminal Type (included)	Removable (D4-16IOCON)
Status Indicators	Logic side
Weight	13.8oz. (390g)
Fuses 19379-K- Wickman	1 (10A 250V) per common User replaceable
Replacement Fuse	D4-FUSE-2 <--->

Maximum DC voltage rating is 120 VDC @ 0.5A @ 30,000 cycles typical. Motor starters up to and including NEMA size 3 can be used with this module.

D4-16TR Relay Output <--->	
Outputs per Module	16 relays
Commons per Module	2 (isolated)
Operating Voltage	5-30VDC-5-250VAC
Output Type	Form A (SPST-NO)
Peak Voltage	30VDC/250VAC
AC Frequency	47-63Hz
ON Voltage Drop	N/A
Max Current (Resistive)	1A/point 5A/common
Max Leakage Current	0.1mA @ 265VAC
Max Inrush Current	4A
Minimum Load	5mA
Base Power Required 5V	1000mA max, 60 mA/point
External DC Required	None
OFF to ON Response	10ms
ON to OFF Response	10ms
Terminal Type (included)	Removable (D4-16IOCON)
Status Indicators	Logic side
Weight	10.9oz. (310g)
Fuses	1 (8A) per common (Non-replaceable)

Typical Relay Life (Operations)	Operating Voltage		
	28 VDC	120 VAC	240 VAC
Maximum Resistive or Inductive Inrush Load Current			
5.0A	200K	100K	
3.0A	325K	125K	50K
0.05A	>50M		

Typical Relay Life (Operations)	Operating Voltage		
	30 VDC	125 VAC	250 VAC
Maximum Resistive or Inductive Inrush Load Current			
1A resistive	>1M	500K	300K
1 A inductive	400K	200K	100K
0.5A resistive	>2M	800K	500K
0.5A inductive	>1M	300K	200K



- PLC Overview
- DL05/06 PLC
- DL105 PLC
- DL205 PLC
- DL305 PLC
- DL405 PLC**
- Field I/O
- Software
- C-more HMIs
- Other HMI
- AC Drives
- Motors
- Steppers/Servos
- Motor Controls
- Proximity Sensors
- Photo Sensors
- Limit Switches
- Encoders
- Current Sensors
- Pushbuttons/Lights
- Process
- Relays/Timers
- Comm.
- TB's & Wiring
- Power
- Circuit Protection
- Enclosures
- Appendix
- Part Index