

120VAC Stand-Alone Relay Modules

Our AC-powered stand-alone relay modules provide isolation, switch high current (10A) loads and are offered in single or 4-socket modules. Relays are included with the modules.

Modules mount on 35 mm DIN rail part #DN-R35S1.



ZL-RLS1-120



ZL-RLS4-120

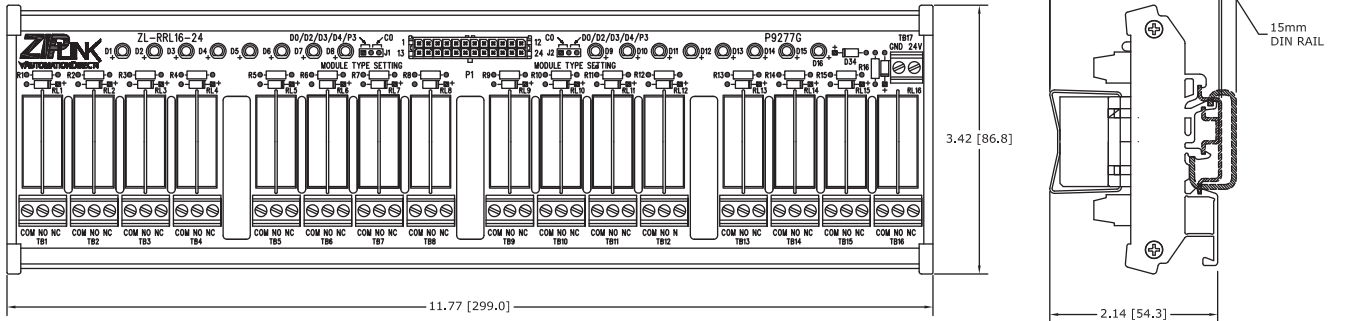
Specifications						
120VAC Stand-Alone Relay Modules	Part #	Pcs/Pkg	Price/Pkg	Part #	Pcs/Pkg	Price/Pkg
		ZL-RLS1-120	1	<--->	ZLRLS4-120	1
Description	Single-socketed relay with 120VAC relay with LED			Four-socketed relays with 120VAC relays with LEDs		
Mechanical Life	10,000,000 Operations at no load condition					
Electrical Life	100,000 Operations at rated resistive load					
Operating Frequency	20 cycles per minute electrical, 300 cycles per minute mechanical					
Isolation Coil to Contact	2500VAC for 1 minute					
Isolation NC Contact to NO Contact Same Relay	1000VAC for 1 minute					
Isolation Between Relays	N/A			1000VAC for 1 minute		
Red LED Indicator State Relay	ON = relay energized, OFF = relay de-energized					
Operating Temperature Range	32 to 140°F (0 to 60°C)					
Humidity Range	45 to 85% RH					
Vibration Resistance	10 to 55 Hz dual amplitude width 1.5mm					
Shock Resistances	1000m/s ² endurance, 100m/s ² operation					
Terminal Block Contacts	Copper alloy, tin-lead plated					
Wire Range*	12-24AWG Solid or Stranded Conductor					
Wire Strip Length	0.24-0.27" (6-7mm)					
Screw Torque	4.4 in-lbs (0.5 Nm)					
Dimensions (WxHxD)	0.88" x 3.04" x 2.14" (22.4mm x 77.2mm x 54.3mm)			3.71" x 3.42" x 2.14" (94.3mm x 86.8mm x 54.3mm)		
Replacement Relays	ZL-RELAY-120X4, Qty. 4/pkg					
Approvals	File # E157382 UL, cUL 508					
Cable/Wire Clearance	0.5" (12.7mm) Required					

Relay Specifications			
Contact		Coil	
Current Rating	30VDC @ 10A 250VAC @ 8A General Use	Input Voltage Rating	115VAC (-20%/+30%), 50-60Hz
Contact Type	1 Form C (SPDT)	Maximum Continuous Coil Voltage	150VAC
Contact Voltage (per point)*	250VAC/30VDC	Rated Current per Coil	7.65mA (±10%) @ 115VAC 50Hz 6.30mA (±10%) @ 115VAC 60Hz
Maximum Power Inductive	2000VA General Use	Coil Resistance	8100Ω (±10%)
Maximum Power Resistive	AC 2000VA, DC 300W	Power Consumption per Coil	0.88W @ 50Hz 0.73W @ 60Hz
Maximum Switching Voltage	250VAC, 110VDC	Drop-Out Voltage Min.	34.5VAC
Minimum Load	10mA @ 5VDC	Pick-Up Voltage Max.	92VAC
Contact Resistance	100mΩ Max @ 1A, 6VDC	Off to On/On to Off Response Time	12ms/8ms
Contact Material	AgNi (Silver Nickel Alloy)		

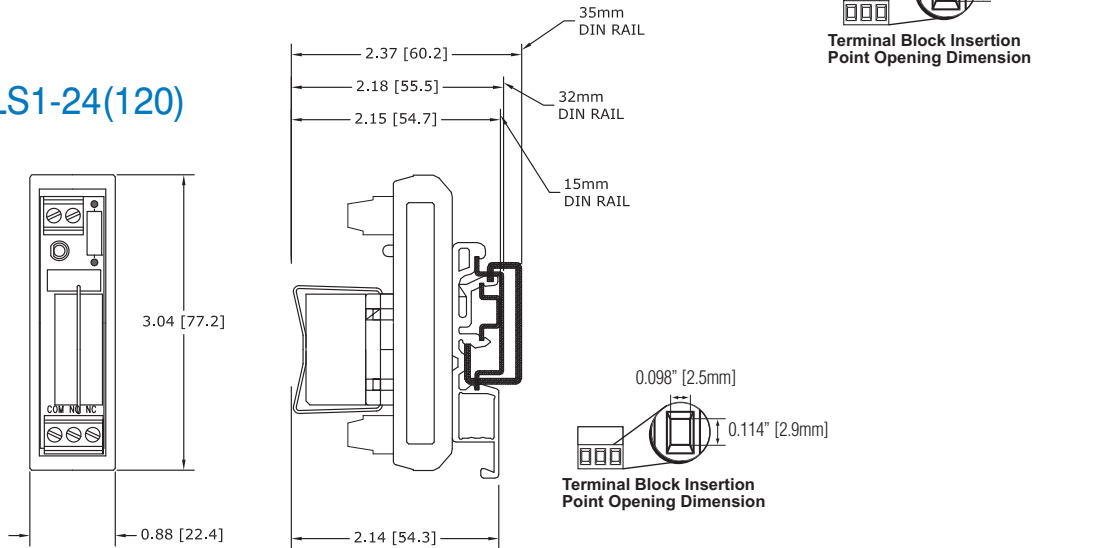
Note: See wiring details and dimensional drawings on our Web site at: <http://www.automationdirect.com/static/manuals/ziplinks/ziplinks.html>

* Use conductors rated for 60°/75°C for relay outputs.

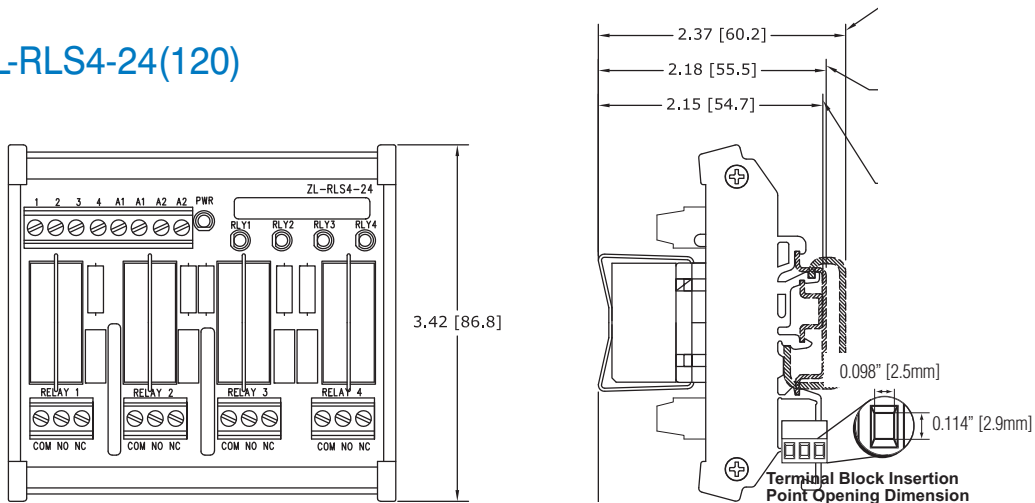
ZL-RRL16-24



ZL-RLS1-24(120)



ZL-RLS4-24(120)



Note: Dimensions shown in Inches [mm]

Replacement Relays

Replacement relays are offered with a 24VDC coil or 120VAC coil and are for use with the ZIPLink relay modules.

Sold in packages of 4.



ZL-RELAY-24X4

ZL-RELAY-120X4



24VDC Relay Specifications			
Contact		Coil	
Current Rating	30VDC @ 10A 250VAC @ 8A General Use	Input Voltage Range	24VDC (-20%/+30%)
Contact Type	1 Form C (SPDT)	Maximum Continuous Coil Voltage	31.2VDC
Contact Voltage (per point)	250VAC/30VDC	Rated Current per Coil	16.7mA (±10%) @ 24 VDC
Maximum Power Inductive	2000VA General Use	Coil Resistance	1440Ω (±10%)
Maximum Power Resistive	AC 2000VA, DC 300W	Power Consumption per Coil	0.4W
Maximum Switching Voltage	250VAC, 110VDC	Pick Up Current Max. per Coil	15mA
Minimum Load	10mA @ 5VDC	Drop-Out Voltage Min.	1.2VDC
Contact Resistance	100mΩ Max @ 1A, 6VDC	Pick-Up Voltage Max.	19.2VDC
Contact Material	AgNi (Silver Nickel Alloy)	Off to On/On to Off Response Time	12ms/8ms
120VAC Relay Specifications			
Contact		Coil	
Current Rating	30VDC @ 10A 250VAC @ 8A General Use	Input Voltage Range	115VAC (-20%/+30%), 50-60Hz
Contact Type	1 Form C (SPDT)	Maximum Continuous Coil Voltage	150VAC
Contact Voltage (per point)	250VAC/30VDC	Rated Current per Coil	7.65mA (±10%) @ 115VAC 50Hz 6.30mA (±10%) @ 115VAC 60Hz
Maximum Power Inductive	2000VA General Use	Coil Resistance	8100Ω (±10%)
Maximum Power Resistive	AC 2000VA, DC 300W	Power Consumption per Coil	0.88W @ 50Hz 0.73W @ 60Hz
Maximum Switching Voltage	250VAC, 110VDC	Drop-Out Voltage Min.	34.5VAC
Minimum Load	10mA @ 5VDC	Pick-Up Voltage Max.	92VAC
Contact Resistance	100mΩ Max @ 1A, 6VDC	Off to On/On to Off Response Time	12ms/8ms
Contact Material	AgNi (Silver Nickel Alloy)		

Replacement Fuses

Replacement Fuse for ZL-RFU20								
Part Number	AMP Rating	Rated Voltage	AC Interrupting Rating at Rated Voltage (50Hz)	Typical Melting I ² t AC*	Voltage Drop mv**	Pcs/Pkg	Package Weight (lb.)	Price
		AC Max						
S5002-R	2	250V	35A	4.2	150	5	0.025	<--->

*Note: Typical Melting I²t (A²Sec) - measured at listed interrupting rating and rated voltage.

** Typical Voltage Drop - measured at 20°C ambient temperature at rated current.



S5002-R

Installation Accessories

Accessories			
	Part #	Pcs/Pkg	Price/Pkg
DIN Rail	DN-R35S1	10	<--->
Angled Support Bracket	DN-ASB1	50	<--->
End Bracket	DN-EB35	50	<--->
Slotted Screwdriver	DN-SS1	1	<--->