

# NEMA 12 JIC Large Contin. Hinge Wall Mount



## Application

Designed to house electrical controls, terminals, instruments and components. Provides protection from dust, dirt, oil, and water.

- Collar studs are provided for mounting optional subpanels
- External mounting feet
- Grounding provisions provided



## Construction

- Bodies and doors fabricated from 14 gauge steel
- Continuously welded seams ground smooth, less knockouts or holes
- Doors are sealed with poured in place polyurethane gasket
- External screw clamps on door
- Continuously hinged door is removable by pulling hinge pin
- Print pocket is provided
- Door and body stiffeners are provided in larger enclosures for added rigidity

## Finish

- ANSI-61 gray polyester powder inside and out over phosphatized surfaces
- Optional subpanels are painted white polyester powder over phosphatized surfaces

## Industry Standards

- UL 50, Types 12 and 13
- UL Files E6924
- CSA Certified, Types 12 and 13
- CSA File LL66078
- NEMA/EEMAC Type 12
- JIC EL-1-71



Enclosure Shipping Schedule		
Same day	1 - 7 days	1 - 10 days
Color indicates shipping lead time in business days.		

**NOTE: Do NOT use NPxxxG subpanels in NEMA 1, NEMA 4 and 4X, and NEMA 12 enclosures. For example: Subpanel NP1612C will not fit enclosure WA161206FM (NP1612 is the correct subpanel). Only use NPxxxx subpanels in NEMA 1, NEMA 4 and 4X, and NEMA 12 enclosures.**

Part Number	Price	Body/Door	Enclosure Size HxWxD	Subpanel P/N	Price	Subpanel Size AxB	C	Stiffener
<b>B201607CH</b>	<-->	14/14	20x16x7 (508x406x178)	<b>NP2016</b>	<-->	17x13 (432x330)	NA	door: no body: no
<b>B201609CH</b>	<-->	14/14	20x16x9 (508x406x229)	<b>NP2016</b>	<-->	17x13 (432x330)	NA	door: no body: no
<b>B202007CH</b>	<-->	14/14	20x20x7 (508x508x178)	<b>NP2020</b>	<-->	17x17 (432x432)	NA	door: no body: no
<b>B202009CH</b>	<-->	14/14	20x20x9 (508x508x229)	<b>NP2020</b>	<-->	17x17 (432x432)	NA	door: no body: no
<b>B242007CH</b>	<-->	14/14	24x20x7 (610x508x178)	<b>NP2420</b>	<-->	21x17 (533x432)	NA	door: no body: no
<b>B242009CH</b>	<-->	14/14	24x20x9 (610x508x229)	<b>NP2420</b>	<-->	21x17 (533x432)	NA	door: no body: no
<b>B242407CH</b>	<-->	14/14	24x24x7 (610x610x178)	<b>NP2424</b>	<-->	21x21 (533x533)	NA	door: no body: no
<b>B242409CH</b>	<-->	14/14	24x24x9 (610x610x229)	<b>NP2424</b>	<-->	21x21 (533x533)	NA	door: no body: no
<b>B242411CH</b>	<-->	14/14	24x24x11 (610x610x279)	<b>NP2424</b>	<-->	21x21 (533x533)	NA	door: no body: no
<b>B302007CH</b>	<-->	14/14	30x20x7 (762x508x178)	<b>NP3020</b>	<-->	27x17 (686x432)	NA	door: no body: no
<b>B302009CH</b>	<-->	14/14	30x20x9 (762x508x229)	<b>NP3020</b>	<-->	27x17 (686x432)	NA	door: no body: no
<b>B302409CH</b>	<-->	14/14	30x24x9 (762x610x229)	<b>NP3024</b>	<-->	27x21 (686x533)	NA	door: no body: no
<b>B302413CH</b>	<-->	14/14	30x24x13 (762x610x330)	<b>NP3024</b>	<-->	27x21 (686x533)	NA	door: no body: no

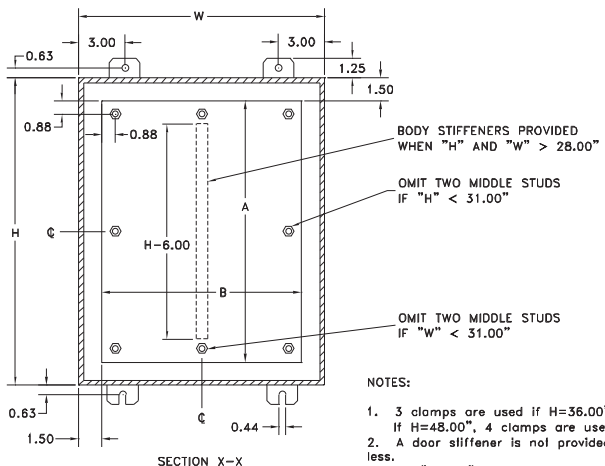
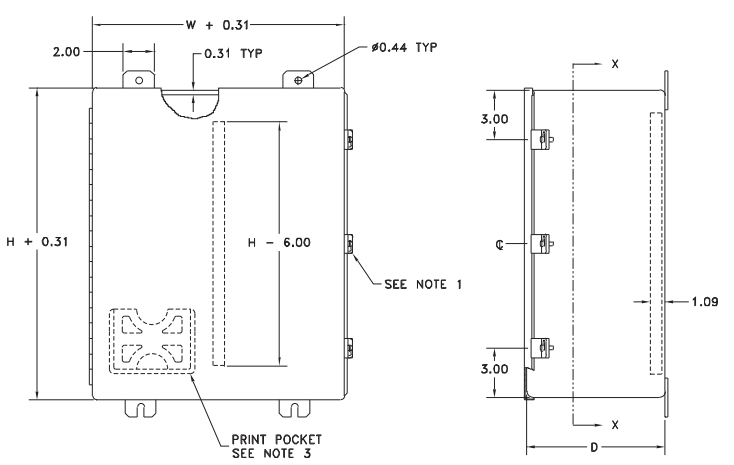
Note: Subpanels must be ordered separately. Dimensions in inches (millimeters); letters in table correspond to letters on dimensional drawings.

# NEMA 12 JIC Large Contin. Hinge Wall Mount

Part Number	Price	Body/Door	Enclosure Size HxWxD	Subpanel P/N	Price	Subpanel Size AxB	C	Stiffener
<b>B362407CH</b>	<--->	14/14	36x24x7 (914x610x178)	<b>NP3624</b>	<--->	33x21 (838x533)	NA	door: no body: no
<b>B362409CH</b>	<--->	14/14	36x24x9 (914x610x229)	<b>NP3624</b>	<--->	33x21 (838x533)	NA	door: no body: no
<b>B362411CH</b>	<--->	14/14	36x24x11 (914x610x279)	<b>NP3624</b>	<--->	33x21 (838x533)	NA	door: no body: no
<b>B363009CH</b>	<--->	14/14	36x30x9 (914x762x229)	<b>NP3630</b>	<--->	33x27 (838x686)	9 (229)	door: no body: yes
<b>B363013CH</b>	<--->	14/14	36x30x13 (914x762x330)	<b>NP3630</b>	<--->	33x27 (838x686)	9 (229)	door: no body: yes
<b>B423609CH</b>	<--->	14/14	42x36x9 (1067x914x229)	<b>NP4236</b>	<--->	39x33 (991x838)	9.88 (251)	door: yes body: yes
<b>B483611CH</b>	<--->	14/14	48x36x11 (1219x914x279)	<b>NP4836</b>	<--->	45x33 (1143x838)	11.38 (289)	door: yes body: yes

Note: Subpanels must be ordered separately. Dimensions in inches (millimeters); letters in table correspond to letters on dimensional drawings.

## Dimensions



- NOTES:
- 3 clamps are used if H=36.00" or 42.00". If H=48.00", 4 clamps are used on 14" centers.
  - A door stiffener is not provided if H or W is 24.00" or less.
  - A 8" X 10" print pocket is provided with enclosures 20, X 20 and larger. All smaller enclosures are provided with a 6" X 6" print pocket.