

PB Series 30.5 mm Pushbutton NEMA 12 Wall Mount



Applications

Designed to hold all standard 30.5mm brands of pushbuttons, switches and pilot lights. Provides protection from dirt, dust, oil and water.

- Enclosures 9.50" x 6.25" x 3.09" and larger have internal detachable hinges to hold cover open during wiring, yet permit quick removal
- Grounding provisions provided



Construction

- Bodies and doors fabricated from 14 gauge steel
- Closed cell oil resistant neoprene gasket
- Continuously welded seams ground smooth
- External mounting feet, top and bottom of enclosure
- Captivated cover screws thread into sealed wells
- Standard "4-way" pushbutton holes accept all brands of oil-tight pushbuttons, switches and pilot lights

Finish

- ANSI-61 gray polyester powder inside and out over phosphatized surfaces

Listings

- UL 508, Types 12 & 13
- UL File E64791
- CSA Certified, Type 12 & 13
- CSA File LL66078
- NEMA/EEMAC Types 12 & 13
- JIC EL-1-71



Enclosure Shipping Schedule		
Same day	1 - 7 days	1 - 10 days

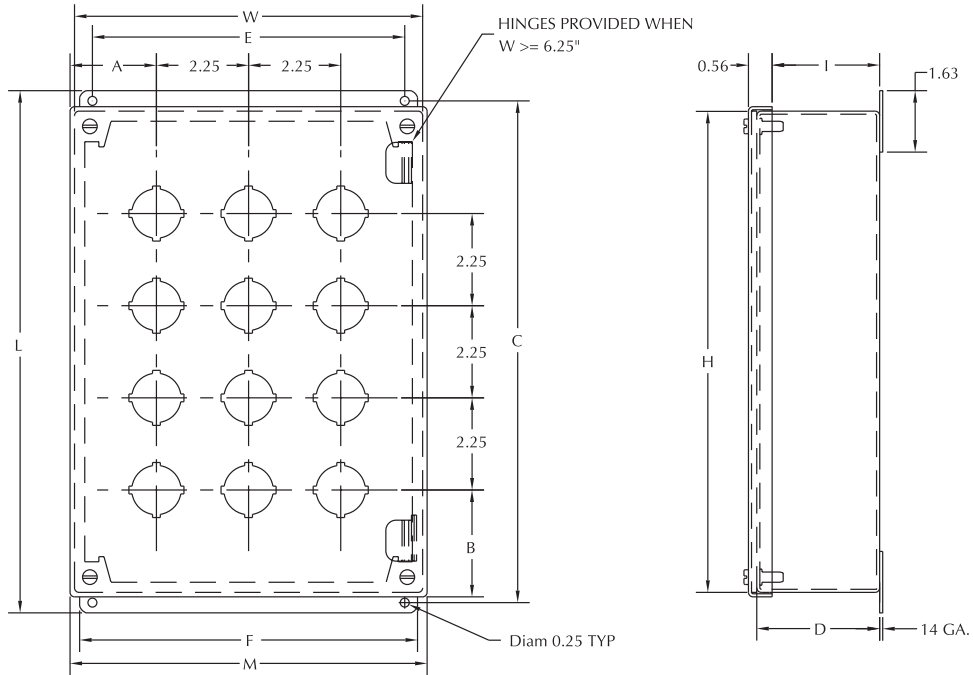
Color indicates shipping lead time in business days.

Pushbutton Enclosure	Price	With Blank Cover	Price	Body/Door	Size HxWxD	Mounting CxE	Overall LxM	F	I	A	B
PB1	<--->	PB1BC	<--->	14/14	3.5x3.25x2.81 (89x83x71)	4x2.38 (102x60)	4.5x3.56 (114x90)	3.00 (76)	2.41 (61)	1.78 (45)	1.88 (48)
PB2	<--->	PB2BC	<--->	14/14	5.75x3.25x2.81 (146x83x71)	6.25x2.38 (159x60)	6.75x3.56 (171x90)	3.00 (76)	2.41 (61)	1.78 (45)	1.88 (48)
PB3	<--->	PB3BC	<--->	14/14	8x3.25x2.81 (203x83x71)	8.5x2.38 (216x60)	9x3.56 (229x90)	3.00 (76)	2.41 (61)	1.78 (45)	1.88 (48)
PB4	<--->	PB4BC	<--->	14/14	10.25x3.25x2.81 (260x83x71)	10.75x2.38 (273x60)	11.25x3.56 (286x90)	3.00 (76)	2.41 (61)	1.78 (45)	1.88 (48)
PB4S	<--->	PB4SBC	<--->	14/14	7.25x6.25x3.09 (184x159x79)	7.75x5.38 (197x137)	8.25x6.56 (210x167)	6.00 (152)	2.69 (68)	2.16 (55)	2.63 (67)
PB5	<--->	PB5BC	<--->	14/14	12.5x3.25x2.81 (318x83x71)	13x2.38 (330x60)	13.5x3.56 (343x90)	3.00 (76)	2.41 (61)	1.78 (45)	1.88 (48)
PB6	<--->	PB6BC	<--->	14/14	9.5x6.25x3.09 (241x159x79)	10x5.38 (254x137)	10.5x6.56 (267x167)	6.00 (152)	2.69 (68)	2.16 (55)	2.63 (67)
PB6VL	<--->	PB6VLBC	<--->	14/14	14.75x3.25x2.81 (375x83x71)	15.25x2.38 (387x60)	15.75x3.56 (400x90)	3.00 (76)	2.41 (61)	1.78 (45)	1.88 (48)
PB8	<--->	PB8BC	<--->	14/14	20.25x3.25x2.81 (514x83x71)	20.75x2.38 (527x60)	21.25x3.56 (540x90)	3.00 (76)	2.41 (61)	1.78 (45)	1.88 (48)
PB9	<--->	PB9BC	<--->	14/14	9.5x8.5x3.09 (241x216x79)	10x7.63 (254x194)	10.5x8.81 (267x224)	8.25 (210)	2.69 (68)	2.16 (55)	2.63 (67)
PB10	<--->	PB10BC	<--->	14/14	24.75x3.25x2.81 (629x83x71)	25.25x2.38 (641x60)	25.75x3.56 (654x90)	3.00 (76)	2.41 (61)	1.78 (45)	1.88 (48)
PB12	<--->	PB12BC	<--->	14/14	11.75x8.5x3.09 (298x216x79)	12.25x7.63 (311x194)	12.75x8.81 (324x224)	8.25 (210)	2.69 (68)	2.16 (55)	2.63 (67)
PB16	<--->	PB16BC	<--->	14/14	11.75x10.75x3.09 (298x273x79)	12.25x9.88 (311x251)	12.75x11.06 (324x281)	10.50 (267)	2.69 (68)	2.16 (55)	2.63 (67)
PB25	<--->	PB25BC	<--->	14/14	14x13x3.09 (356x330x79)	14.5x12.13 (368x308)	15x13.31 (381x338)	12.75 (324)	2.69 (68)	2.16 (55)	2.63 (67)

Note: Dimensions in inches (millimeters); letters in table correspond to letters on dimensional drawings.

PB Series 30.5 mm Pushbutton NEMA 12 Wall Mount

Dimensions



PB Hole Arrangements

