

NEMA 12 Single-Door Flush Wall Mount



Applications

Designed to house electrical controls, terminals and instruments. Provide protection from dirt, dust, oil and water. External frame allows enclosure to be recessed in wall. Enclosure is used in applications where external space is limited or in high traffic areas.



Construction

- Bodies and doors fabricated from 14 gauge steel. 10 gauge steel mounting frame extends completely around enclosure
- Continuously plasma welded seams
- Body stiffeners are added in larger enclosures for extra rigidity
- Grounding provisions provided
- Print Pocket is provided
- Collar studs are provided for mounting optional subpanel
- Rolled lip around all sides of enclosure opening is provided to exclude liquids and contaminants
- Doors are sealed with a pour-in-place polyurethane gasket

- Door is held closed with captivated screws threaded into sealed wells
- Door is removable by pulling heavy gauge continuous hinge pin

Finish

- ANSI-61 gray polyester powder inside and out over phosphatized surfaces
- Optional subpanels are white polyester powder over phosphatized surfaces

Listings

- UL 50 Type 12 & 13
- UL File E6924
- CSA Certified, Type 12
- CSA File LL66078
- NEMA/EEMAC Type 12 & 13
- JIC EL - 1 - 71

NOTE: Do NOT use NPxxxC subpanels in NEMA 1, NEMA 4 and 4X, and NEMA 12 enclosures. For example: Subpanel NP1612C will not fit enclosure WA161206FM (NP1612 is the correct subpanel). Only use NPxxx subpanels in NEMA 1, NEMA 4 and 4X, and NEMA 12 enclosures.

Enclosure Shipping Schedule

Same day	1 - 7 days	1 -10 days
----------	------------	------------

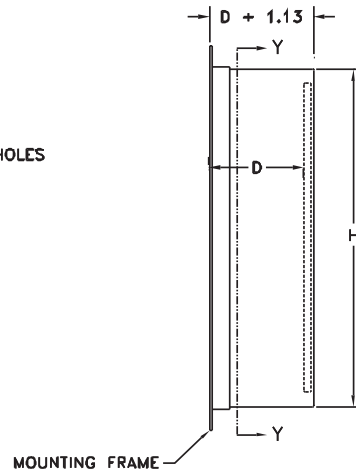
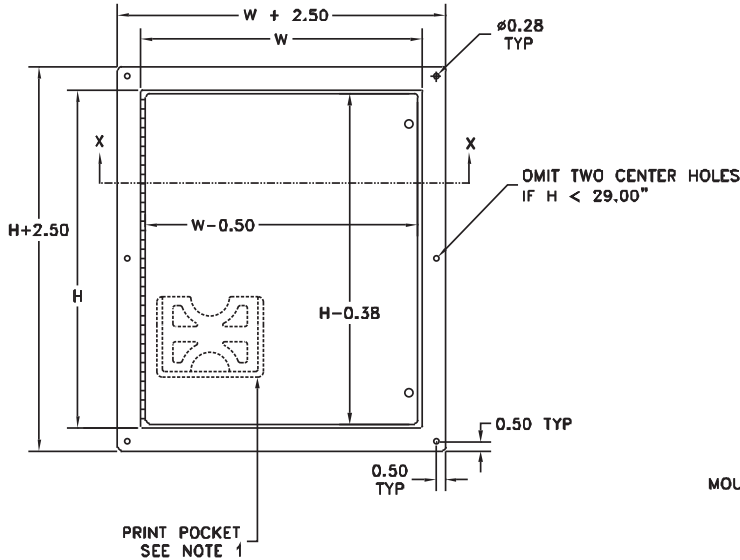
Color indicates shipping lead time in business days.

Part Number	Price	Body/Door	Mtg Frame Ga.	Enclosure Size HxWxD	Subpanel Part Number	Price	Subpanel Size AxB
WA161206FM	<--->	14/14	10	16x12x6 (406x305x152)	NP1612	<--->	13x9 (330x229)
WA202006FM	<--->	14/14	10	20x20x6 (508x508x152)	NP2020	<--->	17x17 (432x432)
WA242408FM	<--->	14/14	10	24x24x8 (610x610x203)	NP2424	<--->	21x21 (533x533)
WA302408FM	<--->	14/14	10	30x24x8 (762x610x203)	NP3024	<--->	27x21 (686x533)
WA363008FM	<--->	14/14	10	36x30x8 (914x762x203)	NP3630	<--->	33x27 (838x686)

Note: Subpanels must be ordered separately. Dimensions in inches (millimeters); letters in table correspond to letters on dimensional drawings.

NEMA 12 Single-Door Flush Wall Mount

Dimensions



NOTES:

1. Large print pocket (8X10) is furnished if $H = 20.00$ " or more and $W = 20.00$ " or more. Otherwise small (6X6) print pocket provided.
2. Panels made from 12 Ga. steel.

