

# NEMA 12 Single-Door Wall Mount



Enclosure Shipping Schedule		
Same day	1 - 7 days	1 - 10 days
Color indicates shipping lead time in business days.		

## Application

Designed to house electrical and electronic controls, instruments, components and associated wiring. Hinged doors provide easy access. Designed for indoor use in protecting components from dust, dirt, oil and water.

## Construction

- Fabricated from 14 gauge steel
- Continuously plasma welded seams
- Door and body stiffeners are provided in larger enclosures for extra rigidity
- Rolled lip on three sides of door and all sides of enclosure opening is provided to exclude liquids and contaminants
- Quick and easy-to-operate door clamps are provided
- Doors removable by pulling heavy gauge continuous hinge pin
- Hasp and staple for padlocking
- Print pocket is provided

- Most doors are sealed with poured in place polyurethane gasket (where indicated, other doors have neoprene gasket)
- Collar studs provided for mounting optional subpanels
- External mounting feet
- Grounding provisions provided
- Optional subpanels must be ordered separately

## Finish

- ANSI-61 gray polyester powder inside and outside over phosphatized surfaces.
- Optional subpanels are painted white polyester powder over phosphatized surfaces.

## Listings

- UL 50, Types 12 and 13
- UL file E6924
- CSA Certified, Type 12
- CSA file LL66078
- Meets NEMA/EEMAC Types 12 and 13 requirements
- JIC EL-1-71

Part Number	Price	Enclosure Size HxWxD	Subpanel P/N	Price	Subpanel Size AxB	C	E	No. of Clamps	Stiffener
<b>N12122406</b>	<--->	12x24x6 (305x610x152)	<b>NP1224</b>	<--->	9x21 (229x533)	NA	0	2	door: no body: no
<b>N12122408</b>	<--->	12x24x8 (305x610x203)	<b>NP1224</b>	<--->	9x21 (229x533)	NA	0	2	door: no body: no
<b>N12161206</b>	<--->	16x12x6 (406x305x152)	<b>NP1612</b>	<--->	13x9 (330x229)	NA	0	2	door: no body: no
<b>N12161208</b>	<--->	16x12x8 (406x305x203)	<b>NP1612</b>	<--->	13x9 (330x229)	NA	0	2	door: no body: no
<b>N12161210</b>	<--->	16x12x10 (406x305x254)	<b>NP1612</b>	<--->	13x9 (330x229)	NA	0	2	door: no body: no
<b>N12161606</b>	<--->	16x16x6 (406x406x152)	<b>NP1616</b>	<--->	13x13 (330x330)	NA	0	2	door: no body: no
<b>N12161608</b>	<--->	16x16x8 (406x406x203)	<b>NP1616</b>	<--->	13x13 (330x330)	NA	0	2	door: no body: no
<b>N12162006</b>	<--->	16x20x6 (406x508x152)	<b>NP2016</b>	<--->	13x17 (330x432)	NA	0	2	door: no body: no
<b>N12162008</b>	<--->	16x20x8 (406x508x203)	<b>NP2016</b>	<--->	13x17 (330x432)	NA	0	2	door: no body: no
<b>N12201206</b>	<--->	20x12x6 (508x305x152)	<b>NP2012</b>	<--->	17x9 (432x229)	NA	0	2	door: no body: no
<b>N12201208</b>	<--->	20x12x8 (508x305x203)	<b>NP2012</b>	<--->	17x9 (432x229)	NA	0	2	door: no body: no
<b>N12201606</b>	<--->	20x16x6 (508x406x152)	<b>NP2016</b>	<--->	17x13 (432x330)	NA	0	2	door: no body: no
<b>N12201608</b>	<--->	20x16x8 (508x406x203)	<b>NP2016</b>	<--->	17x13 (432x330)	NA	0	2	door: no body: no
<b>N12201610</b>	<--->	20x16x10 (508x406x254)	<b>NP2016</b>	<--->	17x13 (432x330)	NA	0	2	door: no body: no
<b>N12201612</b>	<--->	20x16x12 (508x406x305)	<b>NP2016</b>	<--->	17x13 (432x330)	NA	0	2	door: no body: no
<b>N12202006</b>	<--->	20x20x6 (508x508x152)	<b>NP2020</b>	<--->	17x17 (432x432)	NA	0	2	door: no body: no
<b>N12202008</b>	<--->	20x20x8 (508x508x203)	<b>NP2020</b>	<--->	17x17 (432x432)	NA	0	2	door: no body: no

Note: Subpanels must be ordered separately. Dimensions in inches (millimeters); letters in table correspond to letters on dimensional drawings.

# NEMA 12 Single-Door Wall Mount

Part Number	Price	Enclosure Size HxWxD	Subpanel P/N	Price	Subpanel Size AxB	C	E	No. of Clamps	Stiffener
<b>N12202010</b>	<--->	20x20x10 (508x508x254)	<b>NP2020</b>	<--->	17x17 (432x432)	NA	0	2	door: no body: no
<b>N12202406</b>	<--->	20x24x6 (508x610x152)	<b>NP2420</b>	<--->	17x21 (432x533)	NA	0	2	door: no body: no
<b>N12202408</b>	<--->	20x24x8 (508x610x203)	<b>NP2420</b>	<--->	17x21 (432x533)	NA	0	2	door: no body: no
<b>N12241206</b>	<--->	24x12x6 (610x305x152)	<b>NP1224</b>	<--->	9x21 (229x533)	NA	0	2	door: no body: no
<b>N12241208</b>	<--->	24x12x8 (610x305x203)	<b>NP1224</b>	<--->	21x9 (533x229)	NA	0	2	door: no body: no
<b>N12241210</b>	<--->	24x12x10 (610x305x254)	<b>NP1224</b>	<--->	21x9 (533x229)	NA	0	2	door: no body: no
<b>N12241606</b>	<--->	24x16x6 (610x406x152)	<b>NP2416</b>	<--->	21x13 (533x330)	NA	0	2	door: no body: no
<b>N12241608</b>	<--->	24x16x8 (610x406x203)	<b>NP2416</b>	<--->	21x13 (533x330)	NA	0	2	door: no body: no
<b>N12242006</b>	<--->	24x20x6 (610x508x152)	<b>NP2420</b>	<--->	21x17 (533x432)	NA	0	2	door: no body: no
<b>N12242008</b>	<--->	24x20x8 (610x508x203)	<b>NP2420</b>	<--->	21x17 (533x432)	NA	0	2	door: no body: no
<b>N12242010</b>	<--->	24x20x10 (610x508x254)	<b>NP2420</b>	<--->	21x17 (533x432)	NA	0	2	door: no body: no
<b>N12242012</b>	<--->	24x20x12 (610x508x305)	<b>NP2420</b>	<--->	21x17 (533x432)	NA	0	2	door: no body: no
<b>N12242016*</b>	<--->	24x20x16 (610x508x406)	<b>NP2420</b>	<--->	21x17 (533x432)	NA	0	2	door: no body: no
<b>N12242406</b>	<--->	24x24x6 (610x610x152)	<b>NP2424</b>	<--->	21x21 (533x533)	NA	0	2	door: no body: no
<b>N12242408</b>	<--->	24x24x8 (610x610x203)	<b>NP2424</b>	<--->	21x21 (533x533)	NA	0	2	door: no body: no
<b>N12242410</b>	<--->	24x24x10 (610x610x254)	<b>NP2424</b>	<--->	21x21 (533x533)	NA	0	2	door: no body: no
<b>N12242412</b>	<--->	24x24x12 (610x610x305)	<b>NP2424</b>	<--->	21x21 (533x533)	NA	0	2	door: no body: no
<b>N12242416*</b>	<--->	24x24x16 (610x610x406)	<b>NP2424</b>	<--->	21x21 (533x533)	NA	0	2	door: no body: no
<b>N12243008</b>	<--->	24x30x8 (610x762x203)	<b>NP3024</b>	<--->	21x27 (533x686)	NA	0	2	door: no body: no
<b>N12301606</b>	<--->	30x16x6 (762x406x152)	<b>NP3016</b>	<--->	27x13 (686x330)	NA	0	2	door: no body: no
<b>N12302006</b>	<--->	30x20x6 (762x508x152)	<b>NP3020</b>	<--->	27x17 (686x432)	NA	0	2	door: no body: no
<b>N12302008</b>	<--->	30x20x8 (762x508x203)	<b>NP3020</b>	<--->	27x17 (686x432)	NA	0	2	door: no body: no
<b>N12302010</b>	<--->	30x20x10 (762x508x254)	<b>NP3020</b>	<--->	27x17 (686x432)	NA	0	2	door: no body: no
<b>N12302406</b>	<--->	30x24x6 (762x610x152)	<b>NP3024</b>	<--->	27x21 (686x533)	NA	0	2	door: no body: no
<b>N12302408</b>	<--->	30x24x8 (762x610x203)	<b>NP3024</b>	<--->	27x21 (686x533)	NA	0	2	door: no body: no
<b>N12302410</b>	<--->	30x24x10 (762x610x254)	<b>NP3024</b>	<--->	27x21 (686x533)	NA	0	2	door: no body: no
<b>N12302412</b>	<--->	30x24x12 (762x610x305)	<b>NP3024</b>	<--->	27x21 (686x533)	NA	0	2	door: no body: no
<b>N12302416*</b>	<--->	30x24x16 (762x610x406)	<b>NP3024</b>	<--->	27x21 (686x533)	NA	0	2	door: no body: no
<b>N12302420*</b>	<--->	30x24x20 (762x610x508)	<b>NP3024</b>	<--->	27x21 (686x533)	NA	0	2	door: no body: no
<b>N12302424*</b>	<--->	30x24x24 (762x610x610)	<b>NP3024</b>	<--->	27x21 (686x533)	NA	0	2	door: no body: no

Note: Subpanels must be ordered separately. Dimensions in inches (millimeters); letters in table correspond to letters on dimensional drawings.

\*Note: Enclosures are supplied with closed cell neoprene gasket (not foam-in-place).

# NEMA 12 Single-Door Wall Mount

Part Number	Price	Enclosure Size HxWxD	Subpanel P/N	Price	Subpanel Size Ax B	C	E	No. of Clamps	Stiffener
<b>N12303008</b>	<--->	30x30x8 (762x762x203)	<b>NP3030</b>	<--->	27x27 (686x686)	7 (178)	0	2	door: no body: yes
<b>N12303012</b>	<--->	30x30x12 (762x762x305)	<b>NP3030</b>	<--->	27x27 (686x686)	7 (178)	0	2	door: no body: yes
<b>N12303608</b>	<--->	30x36x8 (762x914x203)	<b>NP3630</b>	<--->	27x33 (686x838)	9 (229)	0	2	door: no body: yes
<b>N12362406</b>	<--->	36x24x6 (914x610x152)	<b>NP3624</b>	<--->	33x21 (838x533)	NA	0	2	door: no body: no
<b>N12362408</b>	<--->	36x24x8 (914x610x203)	<b>NP3624</b>	<--->	33x21 (838x533)	NA	0	2	door: no body: no
<b>N12362410</b>	<--->	36x24x10 (914x610x254)	<b>NP3624</b>	<--->	33x21 (838x533)	NA	0	2	door: no body: no
<b>N12362412</b>	<--->	36x24x12 (914x610x305)	<b>NP3624</b>	<--->	33x21 (838x533)	NA	0	2	door: no body: no
<b>N12363006</b>	<--->	36x30x6 (914x762x152)	<b>NP3630</b>	<--->	33x27 (838x686)	9 (229)	0	2	door: no body: yes
<b>N12363008</b>	<--->	36x30x8 (914x762x203)	<b>NP3630</b>	<--->	33x27 (838x686)	9 (229)	0	2	door: no body: yes
<b>N12363010</b>	<--->	36x30x10 (914x762x254)	<b>NP3630</b>	<--->	33x27 (838x686)	9 (229)	0	2	door: no body: yes
<b>N12363012</b>	<--->	36x30x12 (914x762x305)	<b>NP3630</b>	<--->	33x27 (838x686)	9 (229)	0	2	door: no body: yes
<b>N12363016</b>	<--->	36x30x16 (914x762x406)	<b>NP3630</b>	<--->	33x27 (838x686)	9 (229)	0	2	door: no body: yes
<b>N12363020*</b>	<--->	36x30x20 (914x762x508)	<b>NP3630</b>	<--->	33x27 (838x686)	9 (229)	0	2	door: no body: yes
<b>N12363608</b>	<--->	36x36x8 (914x914x203)	<b>NP3636</b>	<--->	33x33 (838x838)	9 (229)	0	2	door: yes body: yes
<b>N12363612</b>	<--->	36x36x12 (914x914x305)	<b>NP3636</b>	<--->	33x33 (838x838)	9 (229)	0	2	door: yes body: yes
<b>N12422408</b>	<--->	42x24x8 (1067x610x203)	<b>NP4224</b>	<--->	39x21 (991x533)	NA	8.813 (224)	3	door: no body: no
<b>N12423008</b>	<--->	42x30x8 (1067x762x203)	<b>NP4230</b>	<--->	39x27 (991x686)	9.88 (251)	8.813 (224)	3	door: yes body: yes
<b>N12423010</b>	<--->	42x30x10 (1067x762x254)	<b>NP4230</b>	<--->	39x27 (991x686)	9.88 (251)	8.813 (224)	3	door: yes body: yes
<b>N12423012</b>	<--->	42x30x12 (1067x762x305)	<b>NP4230</b>	<--->	39x27 (991x686)	9.88 (251)	8.813 (224)	3	door: yes body: yes
<b>N12423608</b>	<--->	42x36x8 (1067x914x203)	<b>NP4236</b>	<--->	39x33 (991x838)	9.88 (251)	8.813 (224)	3	door: yes body: yes
<b>N12423610</b>	<--->	42x36x10 (1067x914x254)	<b>NP4236</b>	<--->	39x33 (991x838)	9.88 (251)	8.813 (224)	3	door: yes body: yes
<b>N12423612</b>	<--->	42x36x12 (1067x914x305)	<b>NP4236</b>	<--->	39x33 (991x838)	9.88 (251)	8.813 (224)	3	door: yes body: yes
<b>N12423616*</b>	<--->	42x36x16 (1067x914x406)	<b>NP4236</b>	<--->	39x33 (991x838)	9.88 (251)	8.813 (224)	3	door: yes body: yes
<b>N12482408*</b>	<--->	48x24x8 (1219x610x203)	<b>NP4824</b>	<--->	45x21 (1143x533)	NA	10.313 (262)	3	door: no body: no
<b>N12483008*</b>	<--->	48x30x8 (1219x762x203)	<b>NP4830</b>	<--->	45x27 (1143x686)	13 (330)	10.313 (262)	3	door: yes body: yes
<b>N12483010*</b>	<--->	48x30x10 (1219x762x254)	<b>NP4830</b>	<--->	45x27 (1143x686)	13 (330)	10.313 (262)	3	door: yes body: yes
<b>N12483608*</b>	<--->	48x36x8 (1219x914x203)	<b>NP4836</b>	<--->	45x33 (1143x838)	11.38 (289)	10.313 (262)	3	door: yes body: yes
<b>N12483610*</b>	<--->	48x36x10 (1219x914x254)	<b>NP4836</b>	<--->	45x33 (1143x838)	11.38 (289)	10.313 (262)	3	door: yes body: yes
<b>N12483612*</b>	<--->	48x36x12 (1219x914x305)	<b>NP4836</b>	<--->	45x33 (1143x838)	11.38 (289)	10.313 (262)	3	door: yes body: yes
<b>N12483616*</b>	<--->	48x36x16 (1219x914x406)	<b>NP4836</b>	<--->	45x33 (1143x838)	11.38 (289)	10.313 (262)	3	door: yes body: yes

Notes: Subpanels must be ordered separately. Dimensions in inches (millimeters); letters in table correspond to letters on dimensional drawings. \*Doors have neoprene gasket.

\*Note: Enclosures are supplied with closed cell neoprene gasket (not foam-in-place).

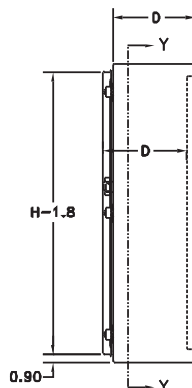
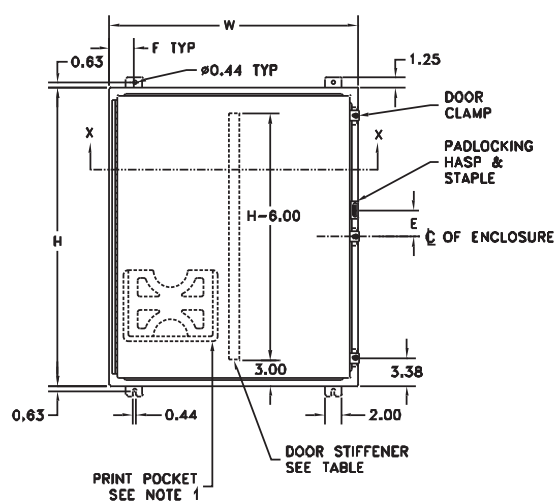
# NEMA 12 Single-Door Wall Mount

Part Number	Price	Enclosure Size HxWxD	Subpanel P/N	Price	Subpanel Size AxB	C	E	No. of Clamps	Stiffener
<b>N12483620*</b>	<--->	48x36x20 (1219x914x508)	<b>NP4836</b>	<--->	45x33 (1143x838)	11.38 (289)	10.313 (262)	3	door: yes body: yes
<b>N12603608*</b>	<--->	60x36x8 (1524x914x203)	<b>NP6036</b>	<--->	57x33 (1448x838)	14.38 (365)	13.313 (338)	3	door: yes body: yes
<b>N12603610*</b>	<--->	60x36x10 (1524x914x254)	<b>NP6036</b>	<--->	57x33 (1448x838)	14.38 (365)	13.313 (338)	3	door: yes body: yes
<b>N12603612*</b>	<--->	60x36x12 (1524x914x305)	<b>NP6036</b>	<--->	57x33 (1448x838)	14.38 (365)	13.313 (338)	3	door: yes body: yes
<b>N12603616*</b>	<--->	60x36x16 (1524x914x406)	<b>NP6036</b>	<--->	57x33 (1448x838)	14.38 (365)	13.313 (338)	3	door: yes body: yes
<b>N12603620*</b>	<--->	60x36x20 (1524x914x508)	<b>NP6036</b>	<--->	57x33 (1448x838)	14.38 (365)	13.313 (338)	3	door: yes body: yes
<b>N12723012*</b>	<--->	72x30x12 (1829x762x305)	<b>NP7230</b>	<--->	69x27 (1753x686)	17.38 (441)	0	4	door: yes body: yes
<b>N12723016*</b>	<--->	72x30x16 (1829x762x406)	<b>NP7230</b>	<--->	69x27 (1753x686)	17.38 (441)	0	4	door: yes body: yes
<b>N12723612*</b>	<--->	72x36x12 (1829x914x305)	<b>NP7236</b>	<--->	69x33 (1753x838)	17.38 (441)	0	4	door: yes body: yes

Notes: Subpanels must be ordered separately. Dimensions in inches (millimeters); letters in table correspond to letters on dimensional drawings. \*Doors have neoprene gasket.

## Dimensions

**NOTE: Do NOT use NPxxx C subpanels in NEMA 1, NEMA 4 and 4X, and NEMA 12 enclosures. For example: Subpanel NP1612C will not fit enclosure WA161206FM (NP1612 is the correct subpanel). Only use NPxxx subpanels in NEMA 1, NEMA 4 and 4X, and NEMA 12 enclosures.**



### NOTES:

1. Large print pocket (8X10) is furnished if H = 20.00" or more and W = 20.00" or more. Otherwise small (6X6) print pocket is provided.
2. Panels are made from 12 Ga. steel.
3. Panels have flanges along all sides when either dimension exceeds 17".
4. The number of door clamps is dependent on size of enclosure. Clamps are furnished on right side of door.
5. F = 3" when W is 16" or greater and F = 1-1/4" when W is 12" or less.

