

NEMA 12 Two-Door Dual Access Freestanding

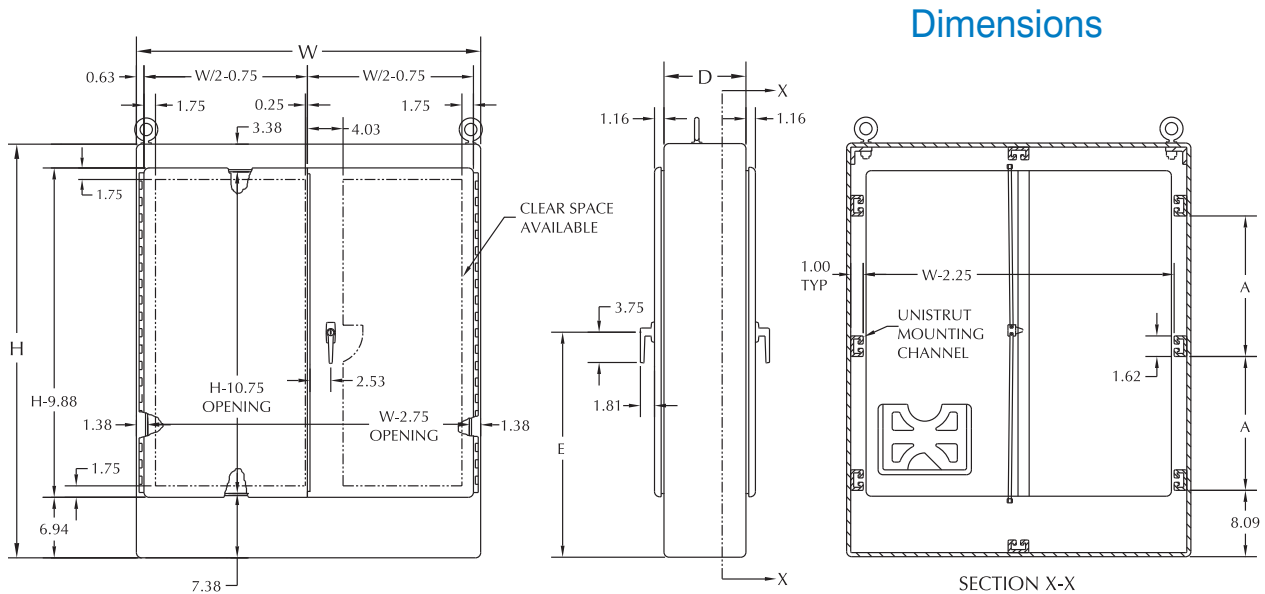
Enclosure Shipping Schedule		
Same day	1 - 7 days	1 - 10 days

Color indicates shipping lead time in business days.

Part Number	Price	Body/Door Gauge	Enclosure Size HxWxD	A	E
WA724824FSDAD	<--->	12/12	72.12x48.12x24.25 (1832x1222x616)	29.13 (740)	38.06 (967)
WA726024FSDAD	<--->	12/12	72.12x60.12x24.25 (1832x1527x616)	29.13 (740)	38.06 (967)
WA726036FSDAD	<--->	12/12	72.12x60.12x36.25 (1832x1527x921)	29.13 (740)	38.06 (967)
WA727224FSDAD	<--->	12/12	72.12x72.12x24.25 (1832x1832x616)	29.13 (740)	38.06 (967)
WA907224FSDAD	<--->	10/10	90.12x72.12x24.25 (2289x1832x616)	38.13 (968)	47.06 (1195)

Note: Subpanels must be ordered separately. Dimensions in inches (millimeters); letters in table correspond to letters on dimensional drawings.

Note: Subpanels for these enclosures are found later in this section.



Accessory center panel supports for freestanding enclosures

CENTER PANEL SUPPORTS		
Part Number	Price	Description
WA60FSCPS	<--->	Center panel support for 60" high enclosures. Allows two single-wide subpanels (including swing-out panels and rack mount frames) to be mounted in a two door enclosure.
WA72FSCPS	<--->	Center panel support for 72" high enclosures. Allows two single-wide subpanels (including swing-out panels and rack mount frames) to be mounted in a two door enclosure.
WA90FSCPS	<--->	Center panel support for 90" high enclosures. Allows two single-wide subpanels (including swing-out panels and rack mount frames) to be mounted in a two door enclosure.

Clamp Nuts		
Part Number	Price	Description
WAPS1420CN	<--->	Clamp nut for unistrut; 1/4" x 20 UNC
WAPS3816CN	<--->	Clamp nut for unistrut; 3/8" x 16 UNC