

WC14 NEMA 12 Operator Consoles



Applications

Designed to hold electrical and electronic controls and instruments. Pushbuttons, pilot lights, meters, switches, etc., can be mounted on the instrument panel. Interior components are mounted on stationary sub panels, swing-out sub panels or relay rack angles (panels are optional). Heavy duty construction provides protection from dirt, dust, oil and water.



Construction

Body

- Bodies and doors fabricated from 14 gauge steel
- Seams are continuously welded and ground smooth, less knockouts or holes
- 3-point keylocking handle is provided on front main door
- Double overlapping doors are provided on two door consoles
- Main hinged doors are flush
- One or two large sloping control panels are hinged on bottom
- Control panels have captivated screws threaded into sealed wells
- Door stops provided to hold control panel open
- Two print pockets are included
- Closed cell neoprene gasket
- Horizontal channels are welded to sides of console to support optional panels and swing-out panels
- Grounding provisions provided
- Half, full and swing panels are optional
- An inclined body rail is welded to each side of 24" wide and 36" wide consoles for support of terminal straps
- Optional angle brackets are available for mounting the WC14B console in a standard 19" rack

Top

- Fabricated from 14-gauge steel
- Top unit is 12.5" deep to accommodate most instruments
- Four holes are provided for mounting to body
- Seams are continuously welded and ground smooth, less knockouts or hole
- Instrument and access panels have captivated screws which thread into sealed wells
- Closed cell neoprene gasket
- Instrument panels and access panels are removable

Writing desk

- Fabricated from 14 gauge steel
- Seams are continuously welded and ground smooth
- Desks are removable and attach easily to console front

Finish

- ANSI-61 gray polyester powder inside and out over phosphatized surfaces
- Optional panels are white polyester powder over phosphatized surfaces

Listings

- UL 508, Types 12 & 13
- UL File E64791
- CSA Certified, Type 12 & 13
- CSA File LL66078
- NEMA/EEMAC Types 12 & 13

Part Number: **WC14R (qty. 2)**
 Price: <--->

Enclosure Shipping Schedule		
Same day	1 - 7 days	1 - 10 days
Color indicates shipping lead time in business days		

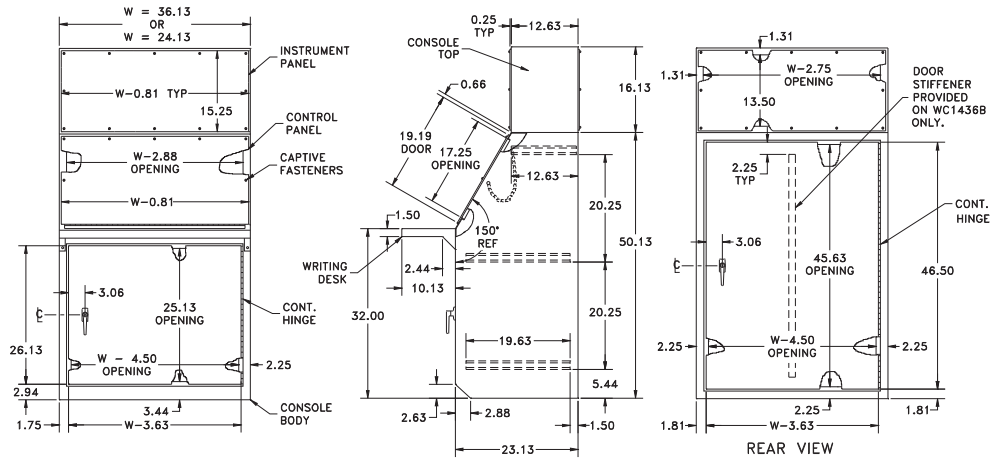
Console P/N	Price	Console Width	Console Top	Price	Writing Desk	Price	Various Subpanels	Sub-panel HxW	Price	Clamping Nuts	Price	Caster Kit	Price	
WC14B * <i>(Single Door)</i>	<--->	24" (610)	WC14T	<--->	WC14W	<--->	WC14P1 (Swing Panel)	22x18.13 (559x461)	<--->	WAPS1420CN	<--->	WC12C	<--->	
							WC14P2 (Half Panel)	22x17 (559x432)	<--->					
							WC14P3 (Full Panel)	42.25x17 (1073x432)	<--->					
WC1436B <i>(Single Door)</i>	<--->	36" (914)	WC1436T	<--->	WC1436W	<--->	WC1436P1 (Swing Panel)	22x30.13 (559x765)	<--->	WAPS1420CN	<--->		<--->	<--->
							WC1436P2 (Half Panel)	22x29 (559x737)	<--->					
							WC1436P3 (Full Panel)	42.25x29 (1073x737)	<--->					
WC1448BD <i>(Double Door)</i>	<--->	48" (1219)	WC1448T	<--->	WC1448W	<--->	WC1448P2 (Half Panel)	22x41 (559x1041)	<--->	WAPS1420CN	<--->		<--->	<--->
							WC1448P3 (Full Panel)	42.25x41 (1073x1041)	<--->					
WC1460BD <i>(Double Door)</i>	<--->	60" (1524)	WC1460T	<--->	WC1460W	<--->	WC1460P2 (Half Panel)	22x53 (559x1346)	<--->	WAPS1420CN	<--->		<--->	<--->
							WC1460P3 (Full Panel)	42.25x53 (1073x1346)	<--->					

Dimensions in inches (millimeters). Subpanels, etc. must be ordered separately. *See body for optional rack angles(set of 2) for this part only.

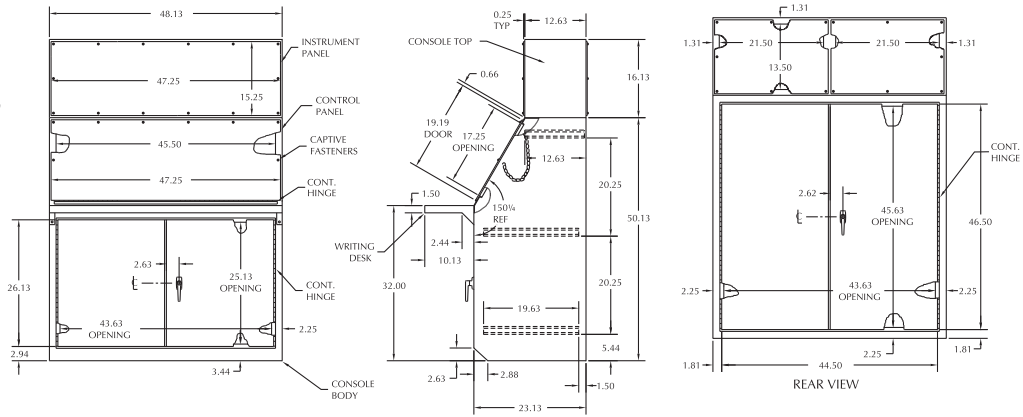
WC14 NEMA 12 Operator Consoles

Dimensions

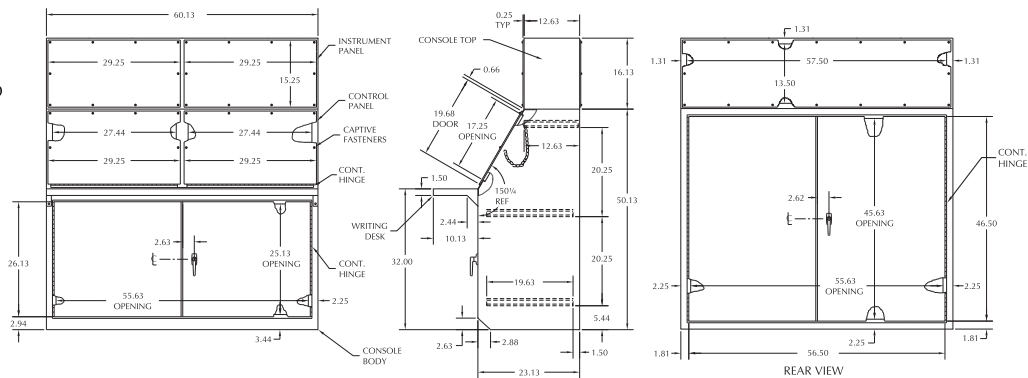
WC14B and WC1436B



WC1448BD



WC1460BD



- Notes:
1. Access doors open 180 degrees.
 2. Two 8"x10" Print Pockets are provided.
 3. 3-point key-locking handles are provided on access doors.
 4. Writing desk is provided with mounting hardware.

Company Information

Systems Overview

Programmable Controllers

Field I/O

Software

C-more & other HMI

Drives

Soft Starters

Motors & Gearbox

Steppers/ Servos

Motor Controls

Proximity Sensors

Photo Sensors

Limit Switches

Encoders

Current Sensors

Pressure Sensors

Temperature Sensors

Pushbuttons/ Lights

Process

Relays/ Timers

Comm.

Terminal Blocks & Wiring

Power

Circuit Protection

Enclosures

Tools

Pneumatics

Appendix

Product Index

Part # Index