

NEMA 1 Large Hinged Wall Mount



Applications

Designed for use in control and instrumentation applications in areas which do not require oil-tight and dust-tight specifications.

Construction

- Bodies and doors fabricated from 14 gauge steel
- Continuous hinged doors
- Doors are easily removable by pulling the hinge pin
- Door and body stiffeners provided for extra rigidity in larger enclosures
- Collar studs provided for mounting optional subpanels
- External mounting feet provided
- Doors are furnished standard with flush mount quarter-turn latch
- Grounding provisions provided

Finish

- ANSI-61 gray polyester powder inside and out over phosphatized surfaces
- Optional subpanels are white polyester powder over phosphatized surfaces

Listings

- UL 50, Type 1
- UL Files E6924
- CSA Certified, Type 1
- CSA File LL66078
- NEMA/EEMAC Type 1

NOTE: Do NOT use NPxxxxC subpanels in NEMA 1, NEMA 4 and 4X, and NEMA 12 enclosures. For example: Subpanel NP1612C will not fit enclosure WA161206FM (NP1612 is the correct subpanel). Only use NPxxxx subpanels in NEMA 1, NEMA 4 and 4X, and NEMA 12 enclosures.

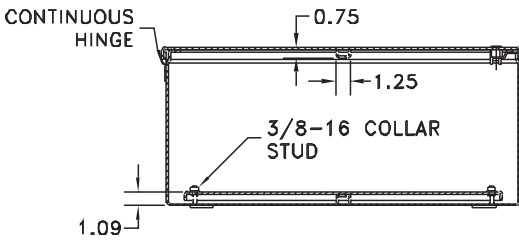
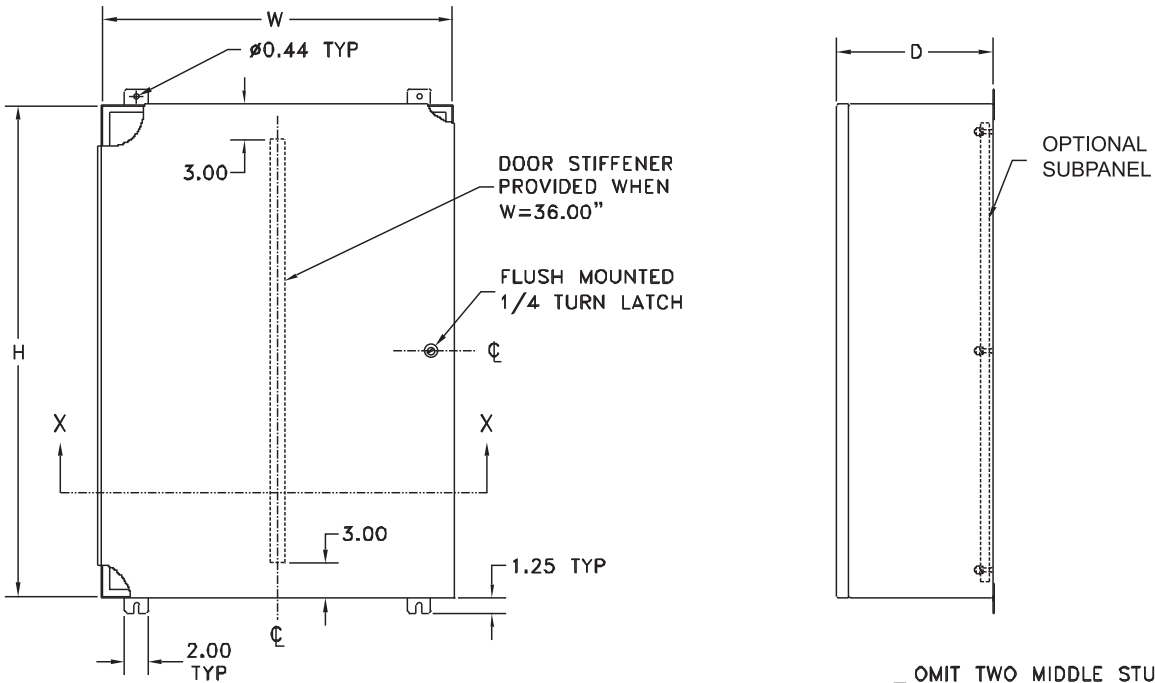
Enclosure Shipping Schedule		
Same day	1 - 7 days	1 - 10 days
Color indicates shipping lead time in business days.		

Part Number	Price	Body/Door	Enclosure Size HxWxD	Subpanel P/N	Price	Subpanel Size AxB	Subpanel Steel Gauge
N1C304209	<--->	14/14	42x30x8.94 (1067x762x227)	NP4230	<--->	39x27 (991x686)	12
N1C304213	<--->	14/14	42x30x12.94 (1067x762x329)	NP4230	<--->	39x27 (991x686)	12
N1C364209	<--->	14/14	42x36x8.94 (1067x914x227)	NP4236	<--->	39x33 (991x838)	12
N1C364809	<--->	14/14	48x36x8.94 (1219x914x227)	NP4836	<--->	45x33 (1143x838)	12
N1C364811	<--->	14/14	48x36x10.94 (1219x914x278)	NP4836	<--->	45x33 (1143x838)	12
N1C364817	<--->	14/14	48x36x17.25 (1219x914x438)	NP4836	<--->	45x33 (1143x838)	12

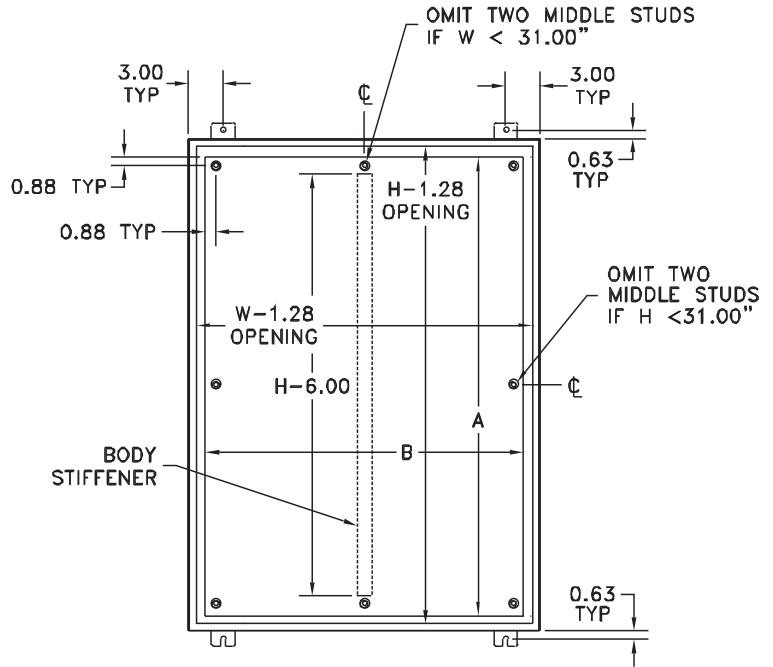
Note: Subpanels must be ordered separately. Dimensions in inches (millimeters); letters in table correspond to letters on dimensional drawings.

NEMA 1 Large Hinged Wall-Mount

Dimensions



SECTION X-X



VIEW WITH COVER REMOVED

Company Information

Systems Overview

Programmable Controllers

Field I/O

Software

C-more & other HMI

Drives

Soft Starters

Motors & Gearbox

Steppers/ Servos

Motor Controls

Proximity Sensors

Photo Sensors

Limit Switches

Encoders

Current Sensors

Pressure Sensors

Temperature Sensors

Pushbuttons/ Lights

Process

Relays/ Timers

Comm.

Terminal Blocks & Wiring

Power

Circuit Protection

Enclosures

Tools

Pneumatics

Appendix

Product Index

Part # Index